

Manuals.plus /

› Vanxse /

› Vanxse 4.3 Inch TFT LCD Car Mirror Monitor and Rear View Reverse Backup Camera System (Model: VS-M4301) - Instruction Manual

Vanxse VS-M4301

Vanxse 4.3 Inch TFT LCD Car Mirror Monitor and Rear View Reverse Backup Camera System

Model: VS-M4301

INTRODUCTION

This manual provides detailed instructions for the installation, operation, and maintenance of your Vanxse 4.3 Inch TFT LCD Car Mirror Monitor and Rear View Reverse Backup Camera System. Please read this manual thoroughly before use to ensure proper functionality and safety.

- **Car Rear View Camera:** 100% waterproof high-definition car rear view camera with night vision. Suitable for most 12V vehicles.
- **4.3" TFT LCD Mirror Monitor:** High-quality 4.3" LCD Mirror Monitor helps prevent accidents when reversing by providing clear visibility.
- **High Image Definition and Night Vision:** Delicate design, stable performance, sharp images, and excellent color effect. Features 8 individual infrared (IR) LEDs for sharp images in low light conditions, especially at night.
- **IP68 Waterproof Design:** This backup camera has been rigorously tested to be waterproof even in heavy rain or vehicle cleaning, and is also shockproof.

PACKAGE CONTENTS

Verify that all items listed below are included in your package:

- 1 x 4.3" TFT LCD Mirror Monitor
- 1 x Car Rear View Camera
- 1 x Monitor Power Cable
- 1 x Video Cable (6 meters)
- 1 x Camera Power Cable
- 1 x User Manual



Image: All components included in the Vanxse 4.3 Inch TFT LCD Car Mirror Monitor and Rear View Reverse Backup Camera System package.

SETUP AND INSTALLATION

Follow these steps to properly install your Vanxse backup camera system:

1. **Mount the Monitor:** The 4.3-inch TFT LCD mirror monitor is designed to clip over your existing rearview mirror. Ensure it is securely attached.
2. **Install the Camera:** The camera can be mounted near the license plate. It features an IP68 waterproof design and 8 IR LEDs for night vision.
3. **Connect Power to Monitor:** Connect the monitor power cable to a 12V power source in your vehicle.
4. **Connect Power to Camera:** Connect the camera power cable. For automatic activation when reversing, connect the camera's power wire to your vehicle's reverse light circuit.
5. **Connect Video Cable:** Use the 6-meter video cable to connect the camera to the monitor. Ensure all connections are secure.



Image: Detailed view of the 4.3-inch mirror monitor and the rear view camera with its mounting bracket and cables.

Video: This video demonstrates the installation process of the Vanxse 4.3 Inch Car Mirror Monitor Backup Camera Kit, showing how to connect the components and mount them in a vehicle.

Video: This video provides an unboxing and connection guide for a similar 4.3 inch reversing system, illustrating how to assemble the monitor and camera components.

OPERATING INSTRUCTIONS

Once installed, the system operates as follows:

1. **Automatic Activation:** When the vehicle is shifted into reverse gear, the monitor will automatically display the rear view from the camera.
2. **Manual Activation:** If not wired to the reverse light, the monitor can be manually turned on/off via its power button.
3. **Adjusting Display Settings:** Use the buttons on the monitor to adjust brightness, contrast, saturation, and tint for optimal viewing.
4. **Parking Lines:** The system may feature adjustable parking lines to assist with accurate parking. These can typically be toggled on or off through the monitor's menu.



Image: The Vanxse 4.3-inch mirror monitor showing a clear rear view with colored parking guidelines.

Video: This video demonstrates the operation of a similar 4.3 inch reversing system, including menu navigation for brightness, contrast, saturation, language, and toggling parking lines on/off, as well as real-world daytime and nighttime views.

Video: This video shows the 4.3 Inch TFT LCD Car Monitor in action, providing a clear rear view during driving and parking maneuvers in various conditions.

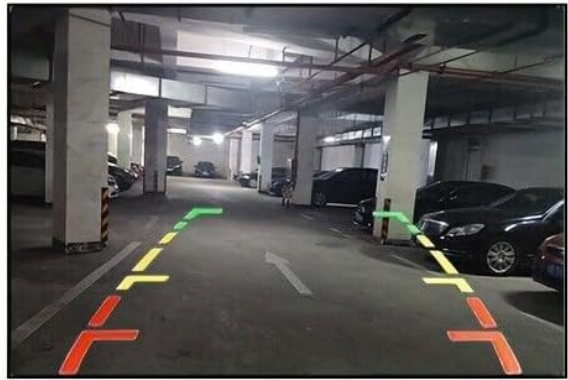
MAINTENANCE

To ensure the longevity and optimal performance of your system:

- **Cleaning:** Regularly clean the camera lens and monitor screen with a soft, damp cloth. Avoid abrasive cleaners.
- **Waterproof Design:** The camera is IP68 waterproof, allowing it to withstand heavy rain and car washes. However, avoid directing high-pressure water jets directly at the camera for extended periods.
- **Temperature Resistance:** The system is designed to operate in a wide range of temperatures.



Daytime effect



Night effect

Image: The rear view camera highlighting its IP68 waterproof rating and resistance to extreme temperatures (-20°C to 80°C), suitable for various weather conditions and car washes.

TROUBLESHOOTING

If you encounter any issues, refer to the following common problems and solutions:

- **No Image on Monitor:**
 - Check all power connections to both the monitor and camera. Ensure they are securely connected to a 12V power source.
 - Verify the video cable is properly connected between the camera and monitor.
 - Ensure the vehicle is in reverse gear (if wired for automatic activation).
- **Flickering or Distorted Image:**
 - Check for loose connections in the video cable.
 - Ensure the power supply is stable and free from interference.
- **Poor Night Vision:**
 - Ensure the camera lens is clean and free from dirt or obstructions.
 - Verify the IR LEDs on the camera are functioning.

SPECIFICATIONS

Brand	Vanxse
Model Number	VS-M4301
Screen Size	4.3 Inches
Display Technology	LCD
Product Dimensions	4.3"L x 0.1"W x 3"H
Item Weight	3.2 ounces
Voltage	12 Volts
Optical Sensor Technology	Infrared
Installation Type	Lip Mount
Compatible Devices	Car/Truck/Bus/Trailer/SUV/RV/Van all vehicles

WARRANTY AND SUPPORT

Your Vanxse product is designed for reliability and performance. If you encounter any problems or have questions regarding your product, please do not hesitate to contact us. We are committed to providing satisfactory solutions to our customers.

For support, please refer to the contact information provided with your purchase or visit the official Vanxse website.