

EKAT Patriot Stereo

EKAT Car Radio User Manual

For Jeep Compass Patriot 2010-2016 (Model: Patriot Stereo)

1. INTRODUCTION

This manual provides detailed instructions for the installation, operation, and maintenance of your EKAT 10.1 inch Android Touch Screen Car Radio. Please read this manual thoroughly before using the product to ensure proper function and safety. This unit is designed specifically for Jeep Compass Patriot models from 2010 to 2016.

2. PRODUCT OVERVIEW

Key Features

- **Applicable Models:** Designed for 2010-2016 Jeep Compass Patriot Radio. Verify your car model, year, and center console shape before purchase.
- **Powerful Android System:** Features the latest Android 13 system with a 4-core CPU, 2GB RAM, and 64GB ROM for enhanced performance and app compatibility.
- **Wired/Wireless CarPlay & Android Auto:** Seamless smartphone integration via Z-Link APP for calls, navigation, and voice assistant access.
- **Advanced Audio:** EQ DSP Audio for superior sound quality.
- **Display:** 10.1 inch Touch Screen with 1080P HD Video Playback.
- **Connectivity:** Wi-Fi Hotspot Internet, Bluetooth, Dual USB Input.
- **Navigation:** GPS Navigation with online and offline map support.
- **Radio:** FM RDS Radio for real-time traffic, news, and weather.
- **Customization:** 26 UI Desktop Themes.
- **Convenience:** Steering Wheel Control (SWC) compatibility, Split Screen function.

- **Expandability:** Compatible with AHD Rear View Camera and external microphone.

What's in the Box

The package includes the EKAT Car Radio unit and the following components:

- Rear Camera
- User Manual
- Canbus Decoder
- Power Cable
- Input Cable
- USB Cable (Dual)
- Microphone (Mic)
- GPS Antenna
- RCA Cable
- Installation Tool
- Radio Antenna

Your browser does not support the video tag.

Video: Unboxing and overview of the EKAT Car Radio package contents for Jeep Compass Patriot 2010-2016.

3. SETUP & INSTALLATION

Professional installation is recommended. Ensure the vehicle's power is disconnected before beginning installation.

Vehicle Compatibility

This unit is a direct fit replacement for the factory radio in Jeep Compass and Patriot models manufactured between 2010 and 2016. Please compare your vehicle's dashboard with the provided images to confirm compatibility.



Image: Comparison of a Jeep Compass Patriot dashboard before and after installation of the EKAT Car Radio, showing a seamless fit.

Wiring and Connections

Connect the provided wiring harness to your vehicle's factory harness. Ensure all connections are secure. Refer to the wiring diagram in the included user manual for specific pin assignments.

Backup Camera Connection

To connect the backup camera:

1. Connect the positive pole of the car reversing light cable to the camera's power input.
2. Connect the negative pole of the car reversing light cable to the camera's ground.
3. The camera's video output cable (yellow RCA) connects to the 'CAM IN' port on the car radio.
4. Ensure the white plug for the reversing input is connected to the radio for proper camera activation and to enable Bluetooth and Wi-Fi signals.

Steering Wheel Control (SWC) Setup

After connecting the Canbus decoder, you need to configure the steering wheel controls:

1. Go to **Settings** on the car radio.
2. Navigate to **Factory Settings** (password: 000000).
3. Select **Protocol Settings**.
4. Choose **Binary** + the correct year and model of your car.
5. Once configured, your steering wheel buttons will function.

4. OPERATING INSTRUCTIONS

Android System Basics

The unit runs on Android 13, providing a familiar smartphone-like interface. Navigate using the touchscreen. Swipe down from the top for quick settings and notifications. Access apps from the home screen or app drawer.



Image: Display showing the Android 13 system interface, highlighting Wi-Fi/Hotspot connectivity and various application icons.

Wired/Wireless CarPlay & Android Auto

Connect your smartphone using the Z-Link APP for seamless integration. This allows you to use navigation, make calls, send messages, and play music directly from your phone's interface on the car radio screen. Both wired and wireless connections are supported.



Image: Split view of the car radio screen demonstrating both Apple CarPlay and Android Auto interfaces.

GPS Navigation

The unit supports GPS navigation with pre-installed maps and the ability to download offline maps. You can also use online navigation apps via Wi-Fi. Enter your destination and follow the voice-guided directions.



Backup Camera
Eliminate blind spots and avoid obstacles when reversing

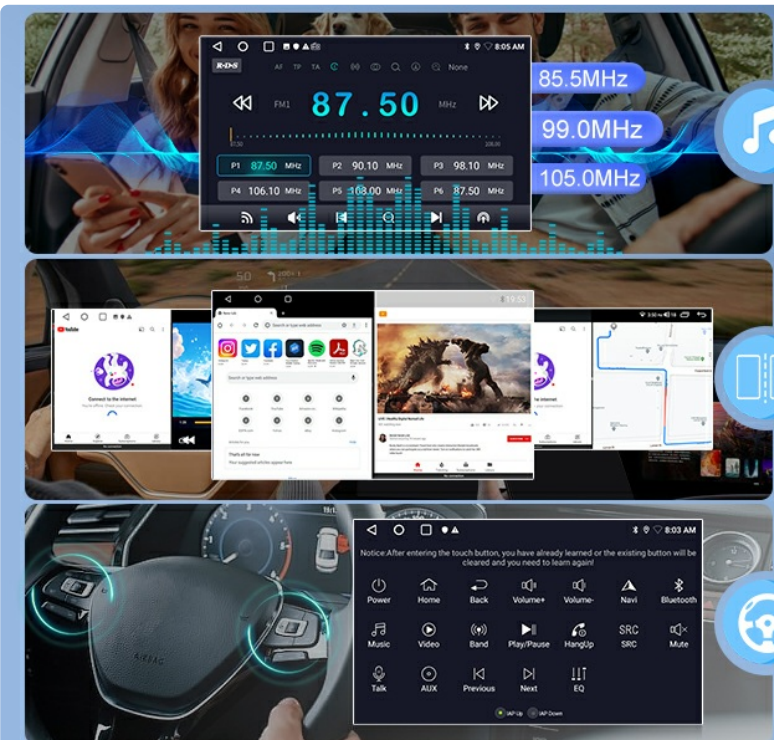
WiFi Hotspot
Enjoy surfing the internet and download your favorite apps

DSP
Giving you the same listening enjoyment as in a concert

Image: Display showing GPS navigation with route information and the FM RDS Radio interface with frequency display.

Bluetooth Connectivity

Pair your smartphone via Bluetooth to make hands-free calls and stream audio. Access your phone's contacts and call history directly from the radio interface.



FM RDS Radio
listen to real-time traffic, news broadcasts, weather forecasts

Split Screen
Convenient for you to open two interfaces at the same time

Steering Wheel Control
Make calls, adjust the volume or change songs

Image: Display showing the Bluetooth calling interface with a dial pad, and an inset of steering wheel control buttons.

FM RDS Radio

Tune into your favorite FM radio stations. The RDS (Radio Data System) feature displays station information, song titles, and real-time traffic, news, and weather updates where available.

Wi-Fi Hotspot Internet

Connect the car radio to a Wi-Fi hotspot (e.g., from your smartphone) to access online content, download apps, and browse the internet directly on the unit.

1080P HD Video Playback

Enjoy high-definition video playback directly on the 10.1-inch screen. The unit supports various video formats for a clear and immersive viewing experience.

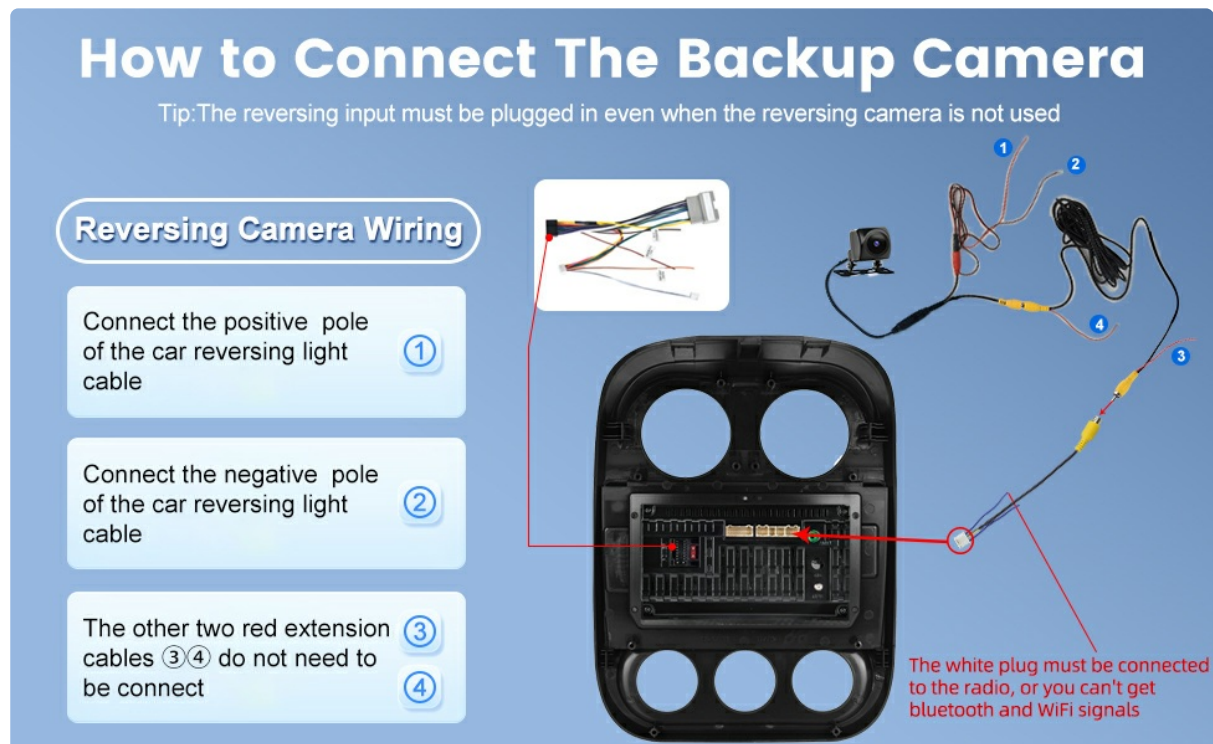


Image: Display showing 1080P HD video playback and the graphical interface for EQ/DSP audio settings.

EQ/DSP Audio

Utilize the built-in Equalizer (EQ) and Digital Sound Processor (DSP) to customize your audio experience. Adjust frequency bands, balance, fader, and surround sound settings to match your preferences.

Split Screen

The split-screen function allows you to run two applications simultaneously. For example, you can have navigation open on one side and music playback on the other.



Image: Display showcasing various UI desktop themes and the split-screen feature running two applications concurrently.

UI Desktop Themes

Personalize your car radio's interface with 26 different UI desktop themes. Choose a theme that best suits your style and preferences.

5. MAINTENANCE

To ensure the longevity and optimal performance of your EKAT Car Radio, follow these maintenance guidelines:

- **Cleaning:** Use a soft, dry cloth to clean the screen and exterior. Avoid abrasive cleaners or solvents that may damage the surface.
- **Software Updates:** Periodically check for and install software updates to ensure the system runs efficiently and has the latest features and security patches.
- **Temperature:** Avoid exposing the unit to extreme temperatures, both hot and cold, for extended periods.
- **Connections:** Ensure all cables and connections remain secure. Loose connections can lead to intermittent issues.

6. TROUBLESHOOTING

If you encounter issues with your EKAT Car Radio, refer to the following common troubleshooting steps:

- **No Power:** Check all power connections and fuses. Ensure the vehicle's ignition is on.

- **No Sound:** Verify speaker connections, volume levels, and audio source selection. Check EQ/DSP settings.
- **Touchscreen Unresponsive:** Try restarting the unit. If the issue persists, a factory reset might be necessary (note: this will erase all user data).
- **Bluetooth Connection Issues:** Ensure Bluetooth is enabled on both the radio and your device. Delete previous pairings and try re-pairing.
- **GPS Not Working:** Ensure the GPS antenna is properly connected and has a clear view of the sky. Check GPS settings in the system.
- **Steering Wheel Controls Not Working:** Re-verify the Canbus connection and the SWC setup procedure in Section 3.

For persistent issues, please contact customer support.

7. SPECIFICATIONS

Feature	Specification
Brand	EKAT
Model Name	Patriot Stereo
Operating System	Android 13
Memory (RAM)	2 GB
Storage (ROM)	64 GB
Display Size	10.1 inch
Display Type	LCD Capacitive Touch Screen
Resolution	1920 x 1080 (1080P HD)
Connectivity	Bluetooth, Wi-Fi, Dual USB
Special Features	Android Auto, Apple CarPlay, Built-In Bluetooth, GPS Navigation, RCA, DSP Audio, Steering Wheel Control
Audio Output Mode	Stereo
Supported Satellite Navigation System	GPS
Item Weight	2.02 Kilograms

8. WARRANTY INFORMATION

The EKAT Car Radio comes with a **2-year warranty** from the date of purchase. This warranty covers

manufacturing defects and malfunctions under normal use. Please retain your proof of purchase for warranty claims. The warranty does not cover damage caused by improper installation, misuse, accidents, or unauthorized modifications.

9. CUSTOMER SUPPORT

If you have any questions or require technical assistance with your EKAT Car Radio, please contact our support team. You can reach us through your Amazon Order page by clicking on the seller's name (annianxishangmaoyo) and selecting 'Ask a question' or 'Send message to seller'. We aim to respond to all inquiries within 24 hours.