

[Manuals.plus](#) /

> [Pro-Ject](#) /

> Pro-Ject Debut EVO 2 Turntable User Manual

## Pro-Ject DEBUTE2SWH

# Pro-Ject Debut EVO 2 Turntable User Manual

Model: DEBUTE2SWH

## INTRODUCTION

---

The Pro-Ject Debut EVO 2 is a high-fidelity turntable designed for optimal vinyl playback. This manual provides essential information for setting up, operating, and maintaining your turntable to ensure long-lasting performance and enjoyment.

Key features include a next-generation audiophile design, a high-precision Pick it MM EVO cartridge, a 1.7 kg anti-magnetic die-cast aluminum platter with TPE damping, and premium build quality with vibration control.

# DEBUT EVO 2

The next generation.



Figure 1: Front view of the Pro-Ject Debut EVO 2 Turntable in Satin White.

## SETUP

Careful setup is crucial for optimal performance. Please follow these steps:

1. **Unpacking:** Carefully remove all components from the packaging. Retain packaging for future transport or service.
2. **Platter Installation:** Place the heavy aluminum platter onto the spindle. Ensure it sits flush and rotates freely.
3. **Belt Installation:** Gently stretch the drive belt around the motor pulley and the inner rim of the platter.
4. **Counterweight Adjustment:** The tonearm is equipped with a pre-fitted Pick it MM EVO cartridge. Adjust the counterweight to achieve the recommended tracking force for the cartridge (refer to cartridge specifications, typically around 1.8g for MM cartridges). Use a tracking force gauge for precision.
5. **Anti-Skating Adjustment:** Set the anti-skating weight according to the tracking force. The anti-skating mechanism uses a small weight and thread.
6. **Connection:** Connect the turntable's RCA output to a phono preamplifier (not built-in) or an amplifier with a dedicated phono input. Ensure the ground wire is connected to prevent hum.

7. **Power:** Connect the 15V DC 0.8A power supply to the turntable and then to a power outlet.

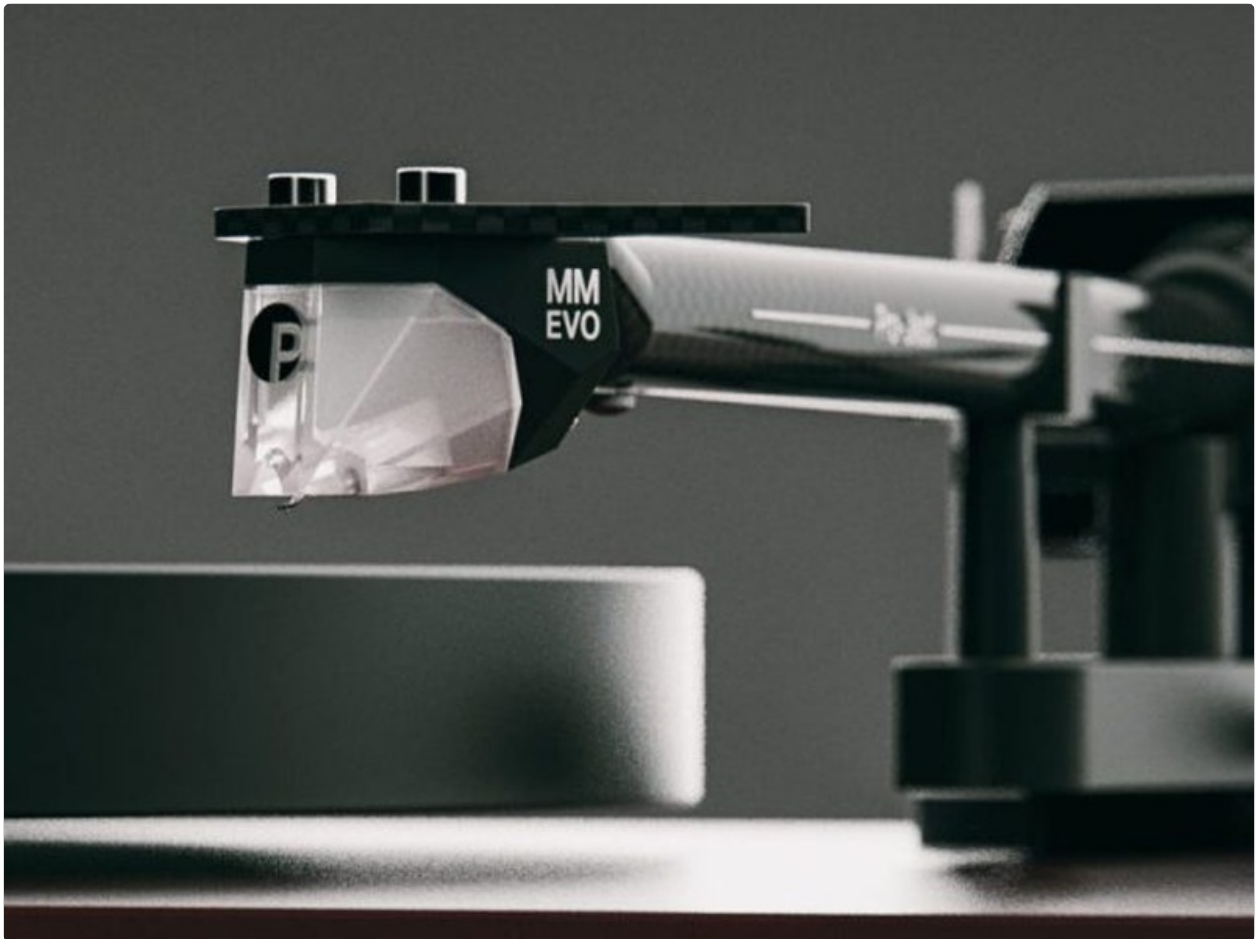


Figure 2: Detail of the 8.6-inch carbon fiber tonearm, designed for rigidity and lightweight performance.

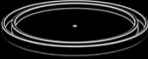
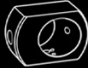


<h3>Special Platter</h3> <p>TPE damped &amp; anti -magnetic - The heavy aluminium platter uses a TPE ring inside to dampen unwanted resonances.</p> <p><b>NEW</b></p> 	<h3>Bearing Block</h3> <p>The massive precise CNC milled aluminium tonearm bearing block absorbs all unwanted resonances coming from the cartridge.</p> <p><b>NEW</b></p> 	<h3>Pick it MM EVO</h3> <p>Lively and robust sound - The new Pick it MM EVO cartridge tops off the new Debut EVO 2.</p> <p><b>NEW</b></p> 	<h3>Counterweight</h3> <p>We have added a TPE damping ring to the counterweight as on our high-end players.</p> <p><b>NEW</b></p> 
---	---	---	---

Figure 3: The adaptive anti-skating mechanism, which adjusts to varying skating forces across the record grooves.



Figure 4: The Pick it MM EVO cartridge, co-designed with Ortofon, providing detailed sound reproduction.

Video 1: An introductory overview of the Pro-Ject Debut Evo 2 turntable, highlighting its features and design.

## OPERATING INSTRUCTIONS

---

1. **Power On:** Press the power button located on the plinth to start the platter rotation.
2. **Select Speed:** Use the electronic speed control switch to select between 33 RPM and 45 RPM, depending on the record you are playing.
3. **Place Record:** Carefully place your vinyl record on the platter.
4. **Lower Tonearm:** Use the tonearm lift lever to raise the tonearm. Position the cartridge over the desired track on the record. Gently lower the tonearm using the lever. The stylus will then make contact with the record and begin playback.
5. **End Playback:** At the end of the record, or when you wish to stop playback, use the tonearm lift lever to raise the tonearm. Return the tonearm to its rest and secure it. Press the power button to stop the platter.

## MAINTENANCE

---

Regular maintenance ensures the longevity and performance of your turntable:

- **Dust Cover:** Always use the provided dust cover when the turntable is not in use to protect it from dust and debris.
- **Cleaning:** Use a soft, anti-static brush to gently clean the stylus before each play. For the platter and plinth, use a soft, dry cloth. Avoid harsh chemicals.
- **Belt Inspection:** Periodically check the drive belt for wear or stretching. Replace if necessary to maintain

accurate speed.

- **Cartridge/Stylus:** The stylus has a limited lifespan. Replace it when sound quality degrades or after approximately 1000 hours of playback.

## TROUBLESHOOTING

Problem	Possible Cause	Solution
No power/platter not spinning	Power supply not connected, power button off, belt dislodged.	Check power connections, ensure power button is on, re-seat drive belt.
Humming sound	Ground wire not connected, interference from other electronics.	Ensure ground wire is securely connected. Move turntable away from other electronic devices.
Distorted sound/skipping	Incorrect tracking force, worn stylus, dirty record/stylus, turntable not level.	Adjust tracking force, clean stylus/record, ensure turntable is on a level surface. Replace stylus if worn.
Incorrect speed	Wrong speed selected, worn drive belt.	Verify correct speed (33/45 RPM) is selected. Inspect and replace drive belt if necessary.

## SPECIFICATIONS

- **Brand:** Pro-Ject
- **Model Name:** Debut EVO 2
- **Model Number:** DEBUTE2SWH
- **Color:** Satin White
- **Maximum Rotational Speed:** 45 RPM (supports 33 RPM)
- **Included Components:** 15V DC 0.8A power supply, dust cover, 7" singles adapter
- **Special Feature:** Hi Res Audio
- **Material:** Aluminum, Carbon Fiber
- **Item Weight:** 8 Kilograms
- **Connectivity Technology:** Wired
- **Signal-to-Noise Ratio:** 60 dB
- **Power Source:** Corded Electric
- **Item Dimensions L x W x H:** 16.4"L x 12.6"W x 4.5"H



Figure 5: Rear connections of the turntable, including RCA outputs for left and right channels and a ground terminal.

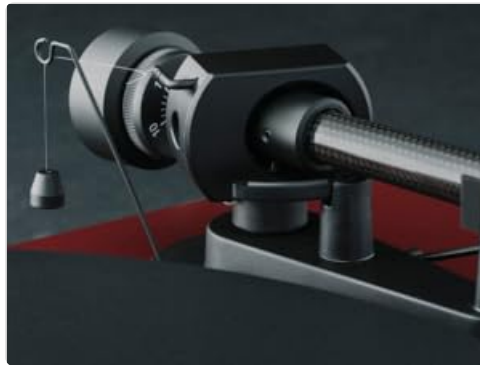


Figure 6: Illustration of the TPE damped and anti-magnetic heavy aluminum platter, designed to reduce unwanted resonances.

## WARRANTY AND SUPPORT

The Pro-Ject Debut EVO 2 Turntable comes with a 2-year manufacturer's warranty. For warranty claims or technical support, please contact Pro-Ject customer service or your authorized dealer. Spare parts availability is guaranteed for 25 years in the EU.

For further assistance, visit the official Pro-Ject Audio Systems store: [Pro-Ject Audio Systems Store](#)