

Phomemo LT12

Phomemo LT12 Label Maker Machine User Manual

Model: LT12

1. INTRODUCTION

The Phomemo LT12 Label Maker Machine is a portable, rechargeable label printer designed for various organizational needs in home, office, and school environments. It features a QWERTY keyboard for direct input and Bluetooth connectivity for enhanced customization via the Printmaster application. This manual provides comprehensive instructions for setting up, operating, and maintaining your LT12 label maker.

2. PACKAGE CONTENTS

Please verify that all items listed below are included in your package:

- 1 x LT12 Label Maker
- 1 x Type-C Charging Cable
- 1 x 12mm x 4m Black on White Label Tape
- 1 x User Manual



Image: The Phomemo LT12 label maker, a Type-C charging cable, a roll of 12mm x 4m black on white label tape, and the user manual, laid out as included in the package.

3. PRODUCT OVERVIEW AND FEATURES

The Phomemo LT12 is designed for ease of use and versatility. Key features include:

- **Rechargeable Battery:** Equipped with a 1200mAh lithium battery, providing 2-3 hours of continuous printing on a full charge. Charges via a Type-C cable. Features an automatic shut-off after 5 minutes of inactivity to conserve battery life.
- **Dual Input Methods:** Features a familiar QWERTY keyboard for direct, one-touch printing and Bluetooth connectivity for advanced editing via the Printmaster APP.
- **Printmaster APP:** Offers extensive customization with over 1600 icon symbols, 163 fonts, 30+ languages, and 287+ border styles. Supports saving templates and viewing print history.
- **Efficient Labeling:** Supports label widths from 9mm to 12mm, allowing for multiple lines of text. Includes a built-in cutter and supports horizontal or vertical printing.
- **Durable Labels:** Labels are waterproof, BPA-free, heat resistant, and designed to tear off without residue. They are fade-resistant, maintaining clarity even in humid or harsh conditions.
- **LCD Backlit Screen:** A backlit LCD display ensures optimal visibility and readability of labels, even in low-light environments.



Image: The Phomemo LT12 Label Maker, showcasing its QWERTY keyboard, LCD screen, and a smartphone connected via Bluetooth, alongside label tape and a charging cable.

Build-in Rechargeable Label Printer with Large Print

Optimising solutions to the most painful problems



Image: A visual comparison highlighting the LT12's integrated 1200mAh rechargeable battery against other label makers that require 6 AA batteries.

Store Applications



Image: The Phomemo LT12 label maker with its LCD backlit screen illuminated, demonstrating clear visibility in a dimly lit setting.

4. SETUP

4.1 Charging the Device

Before first use, fully charge the LT12 label maker. Connect the provided Type-C charging cable to the device and a compatible USB power source. The charging indicator will show the charging status.

4.2 Loading Label Tape

1. Open the tape compartment cover on the side of the label maker.
2. Insert the label tape cassette with the tape end facing the print head. Ensure the tape is properly aligned.
3. Close the tape compartment cover securely.

4.3 App Installation and Bluetooth Connection

To utilize advanced features and customization, connect your LT12 label maker to the Printmaster app:

1. Download the **Printmaster** app from your smartphone's app store (available for Android and iOS).

2. Turn on Bluetooth on your smartphone and power on the LT12 label maker.
3. Open the Printmaster app and search for available Bluetooth devices.
4. Select "LT12 Label Maker" from the list to establish a connection.



Image: A visual guide showing four steps to connect the Phomemo LT12 label maker to a smartphone via the Printmaster app: download app, enable Bluetooth, search for device, and select LT12.

5. OPERATING INSTRUCTIONS

5.1 Basic Label Creation (Using Keyboard)

1. Power on the label maker.
2. Use the QWERTY keyboard to type your desired text. The text will appear on the LCD screen.
3. Utilize the function keys for basic editing:
 - **Esc:** Exit current menu or cancel action.
 - **File:** Access saved labels or save current label (supports up to 9 files).
 - **A/a:** Toggle between uppercase and lowercase letters.
 - **Settings:** Adjust device settings (e.g., language, print density).
 - **Insert:** Add symbols, dates, or other special characters.
 - **Format:** Change font styles, sizes, or add borders.
 - **Clear:** Delete characters or clear the entire text.
 - **OK:** Confirm selections or initiate printing.
4. Press the **OK** button to print the label.

Home Applications



Image: A detailed view of the Phomemo LT12 label maker's QWERTY keyboard and its LCD screen, showing text input.

5.2 Advanced Label Creation (Using Printmaster App)

1. Ensure your LT12 label maker is connected to the Printmaster app via Bluetooth.
2. Within the app, you can:
 - Type text and adjust font, size, and style.
 - Access a library of over 1600 icons and symbols.
 - Choose from 163 fonts and 287 border styles.
 - Create and save custom templates for frequent use.
 - Review your print history.
3. Once your label design is complete in the app, tap the print icon to send it to the label maker.



Image: A series of smartphone screenshots illustrating the Printmaster app's interface for text editing, symbol insertion, and label customization.

6. MAINTENANCE

6.1 Cleaning

Regular cleaning ensures optimal performance:

- Turn off the device before cleaning.
- Use a soft, dry cloth to wipe the exterior of the label maker.
- Gently clean the print head with a cotton swab moistened with rubbing alcohol if print quality degrades. Allow to dry completely before use.

6.2 Battery Care

- To prolong battery life, avoid completely discharging the battery frequently.
- Charge the device regularly, even if not in frequent use.
- If storing for an extended period, charge the battery to approximately 50% and recharge every 3-6 months.

6.3 Storage

Store the label maker in a cool, dry place away from direct sunlight and extreme temperatures. Remove the label tape cassette if storing for a very long period.

7. TROUBLESHOOTING

Problem	Possible Cause	Solution
Device does not power on or charge.	Low battery; faulty charging cable or adapter; device malfunction.	Ensure the device is charged using the provided Type-C cable and a working power adapter. Try a different cable or adapter. If the issue persists, contact support.
No print or faint print.	Label tape incorrectly installed; print head dirty; low battery.	Reinstall the label tape correctly. Clean the print head as described in Section 6.1. Charge the device fully.

Problem	Possible Cause	Solution
Bluetooth connection fails.	Bluetooth not enabled; app issue; device not discoverable.	Ensure Bluetooth is enabled on both the label maker and your smartphone. Restart the app and the label maker. Try pairing again.
Labels are not cutting properly.	Cutter blade dull or obstructed.	Ensure no tape residue is obstructing the cutter. If the issue persists, contact support.
Labels peel off easily.	Surface not clean; label type unsuitable for surface.	Ensure the surface is clean, dry, and smooth before applying the label. Use appropriate label types for specific environments (e.g., waterproof for humid areas).

8. SPECIFICATIONS

Feature	Detail
Model Name	LT12
Brand	Phomemo
Connectivity Technology	Bluetooth
Printing Technology	Thermal
Maximum Media Size	12mm x 4m
Maximum Black and White Print Resolution	203 dpi
Max Print Speed (Monochrome)	30 ppm
Battery	1200mAh Lithium Ion (included)
Charging Interface	USB Type-C
Product Dimensions	8.85"D x 4.29"W x 3.07"H
Item Weight	10.3 ounces (291 Grams)
Compatible Devices	Smartphones, Tablets (Android, iOS)
Printer Ink Type	No Ink (Thermal Printing)

9. WARRANTY INFORMATION

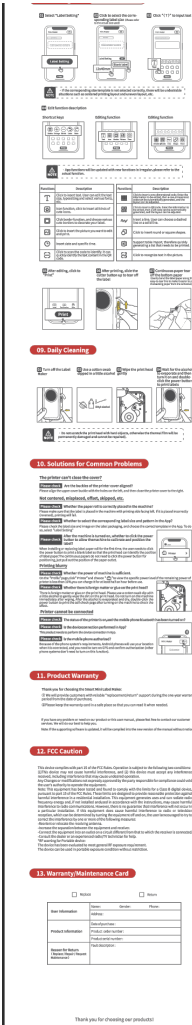
The Phomemo LT12 Label Maker Machine comes with a Limited Warranty. For specific details regarding warranty coverage, duration, and terms, please refer to the warranty card included in your product packaging or visit the official Phomemo website for the most current information.

10. SUPPORT

For further assistance, technical support, or inquiries about your Phomemo LT12 Label Maker Machine,

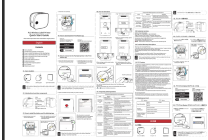
Phomemo Store

A comprehensive user guide for the Phomemo D35 wireless Bluetooth label maker. Learn how to set up, use the smartphone app, and print custom labels for home and office organization with this portable mini label printer.



[Phomemo P12 Wireless Label Maker Quick Start Guide](#)

A concise guide to setting up and using the Phomemo P12 Wireless Label Maker, covering installation, connectivity, app usage, and printing.



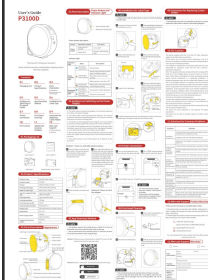
[Phomemo Q31 Smart Mini Label Maker: Product Instruction Manual](#)



Comprehensive user manual for the Phomemo Q31 Smart Mini Label Maker, covering setup, specifications, usage, printing guides, cleaning, troubleshooting, and warranty information.



[Phomemo P3100D Portable Label Maker User Guide](#)

User's guide for the Phomemo P3100D portable label maker, covering setup, operation, troubleshooting, and product specifications. Learn how to install label tape, connect via Bluetooth, and maintain your device.



<div data-bbox="137 114 264 134" data-label="Section-Header"><p>Quick Start Guide</p></div> <div data-bbox="137 138 172 154" data-label="Text"><p>D30</p></div> <div data-bbox="154 188 271 286" data-label="Image"></div> <div data-bbox="194 320 231 333" data-label="Text"><p>English</p></div>	<div data-bbox="341 170 871 197" data-label="Section-Header"><p>Phomemo D30 Label Maker Quick Start Guide</p></div> <div data-bbox="341 210 1453 280" data-label="Text"><p>A quick start guide for the Phomemo D30 portable thermal label maker, covering unboxing, setup, app connection, paper roll replacement, and charging instructions.</p></div>
<div data-bbox="118 443 309 508" data-label="Image"></div>	<div data-bbox="341 396 999 423" data-label="Section-Header"><p>Phomemo M200 Portable Label Maker Instruction Manual</p></div> <div data-bbox="341 436 1461 544" data-label="Text"><p>User guide for the Phomemo M200 portable label maker, detailing setup, specifications, parts, app installation, printing, and troubleshooting. Includes multilingual instructions and warranty information.</p></div>