

[Manuals.plus](#) /

> [Panasonic](#) /

> Panasonic ER-GF82-S Family Hair Clipper Instruction Manual

## Panasonic ER-GF82-S

# Panasonic ER-GF82-S Family Hair Clipper Instruction Manual

## INTRODUCTION

Thank you for purchasing the Panasonic ER-GF82-S Family Hair Clipper. This manual provides essential information for the safe and effective use of your new hair clipper. Please read it thoroughly before use and keep it for future reference.

## IMPORTANT SAFETY INFORMATION

### WARNING:

- Do not use this appliance near water (e.g., in a bathtub, shower, or near a sink).
- The blades are sharp. Handle with extreme caution to prevent injury.
- When using the appliance with the AC adapter connected, never use it for water washing or in a bath/shower room. The AC adapter is not waterproof.
- Keep out of reach of children.
- Do not disassemble, repair, or modify the appliance yourself. Contact authorized service personnel for repairs.

Always ensure the appliance is clean and free from damage before each use.

## PACKAGE CONTENTS

Verify that all items are present in the package:

- Panasonic ER-GF82-S Hair Clipper Unit
- AC Adapter
- Slide Attachments (20-40mm, 50-70mm)
- Cutting Height Attachments (3/6mm, 9/12mm, 15/18mm)
- Ear & Natural Attachment
- Thinning Attachment
- Cleaning Brush
- Oil

- Technique BOOK
- Instruction Manual (this document)

## SETUP

### Charging the Appliance

The ER-GF82-S can be used cordlessly after charging. For optimal performance, fully charge the unit before first use.

1. Ensure the appliance is switched off.
2. Connect the AC adapter to the charging port on the clipper.
3. Plug the AC adapter into a suitable power outlet (Type A, 2-pin).
4. The charging indicator light will illuminate. A full charge takes approximately 8 hours and provides about 40 minutes of cordless operation.
5. Once fully charged, disconnect the AC adapter.

# カットの邪魔にならない コードレス



1回のフル充電で  
**約40分**  
使用可能

充電が無くなったら、  
コードをつないでも使用可能

○写真はイメージです。

Image: The hair clipper connected to its charging cable. The left image shows the cable being inserted into the clipper, and the right image shows the clipper operating while connected to the power cord, indicated by a red light. This illustrates both charging and corded operation.

If the battery runs out during use, you can continue using the clipper by connecting it directly to the AC adapter and power outlet.

## Attaching and Removing Blades/Attachments

- **To attach:** Align the attachment with the blade and push until it clicks into place.
  - **To remove:** Gently push the attachment away from the blade while holding the clipper firmly.
- 

## OPERATING INSTRUCTIONS

The ER-GF82-S is designed for various hair cutting styles, from buzz cuts to medium length hair, using its versatile attachments.

### Understanding Attachments and Cutting Lengths

The clipper offers a wide range of cutting lengths from approximately 0.5 mm (direct blade) up to 70 mm with attachments. Refer to the included "Technique BOOK" for detailed guidance on specific hairstyles.

# ボウズ～ミディアムの ヘアスタイルに対応

刈り高さ

約**0.5-70**  
mm

直刃

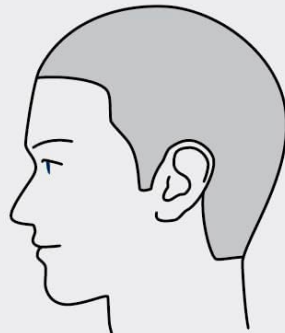
約**0.5** mm

刻み幅

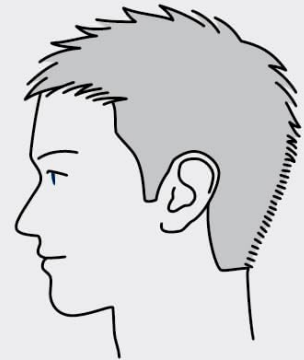
**3** mm / **10** mm

**13段階調節**  
直刃+アタッチメント

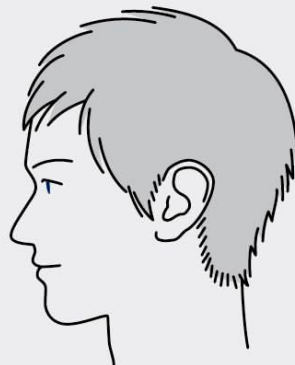
アタッチメント**7種**



ボウズ



ベリーショート





ショート



ミディアム

○イラストはイメージです。

Image: This diagram illustrates different hairstyles achievable with the ER-GF82-S, including buzz cut, very short, short, and medium. It also shows the cutting length range from 0.5 mm (direct blade) to 70 mm using various attachments.

	ファミリーヘアカッター <b>ER-GF82</b>	ファミリーヘアカッター <b>ER-GF42</b>
		
おすすめ ヘアスタイル	ボウズ ベリーショート ショート ミディアム	ボウズ ベリーショート — —
スライド アタッチメント (スライドさせて長さを選べる)	<b>2個</b> (20・30・40 mm) (50・60・70 mm)	—
刈り高さ アタッチメント	<b>3個</b>	<b>2個</b>
耳まわり&ナチュラル アタッチメント※	◎	◎
水洗い	◎	◎

※耳まわりにセット時、カットできる髪の長さの目安は20~40mmです。 ◎写真はイメージです。

Image: A comparison table highlighting the features of the ER-GF82 (Family Hair Clipper) versus the ER-GF42. It shows that the ER-GF82 supports buzz, very short, short, and medium hairstyles, comes with 2 slide attachments (20-40mm, 50-70mm), 3 cutting height attachments, and includes ear & natural attachment and water washing capability.

## Using the Attachments

- **Slide Attachments:** These attachments allow you to select various lengths by sliding them. Use them for overall hair cutting to achieve desired lengths (e.g., 20-40mm, 50-70mm).
- **Cutting Height Attachments:** Use these for specific short lengths like buzz cuts or to trim the ends. Available lengths include 3/6mm, 9/12mm, and 15/18mm.
- **Ear & Natural Attachment:** This 2-in-1 attachment is designed for easily trimming around the ears and creating a natural, blended finish. It helps achieve a clean line without cutting too much at once.
- **Thinning Attachment:** Ideal for adjusting hair volume, creating layers, or adding lightness to the hair ends and outline for a neat, natural look.

# 家族みんなで使える ファミリーヘアーカッター



耳まわり



ナチュラル



スキ刈り

豊富なアタッチメントで自然な仕上げ、  
耳まわりの安心カットが簡単にできる

○写真はイメージです。

Image: Three panels demonstrating the use of different attachments. The first shows trimming around the ear, the second shows creating a natural blend, and the third shows thinning hair for volume adjustment.

## Cutting Techniques (Refer to Technique BOOK)

For detailed cutting methods and tips, please consult the included "Technique BOOK". This guide provides comprehensive instructions to help you achieve various hairstyles effectively.

# 初めてでも安心な テクニックBOOK付き



○写真はイメージです。

Image: The cover of the "Panasonic Family Hair Clipper Technique BOOK," which is included with the product to provide detailed cutting instructions and tips.

## MAINTENANCE

### Water-Through Cleaning

The ER-GF82-S features a convenient water-through cleaning function for easy hygiene.

1. Ensure the appliance is switched off and disconnected from the AC adapter.
2. Slide the water-through shutter (if applicable, or follow specific instructions in the Technique Book for water flow).
3. Rinse the blade head under running water. Do not immerse the entire unit.
4. Shake off excess water and wipe the unit dry with a soft cloth.
5. Allow the blade to air dry completely before storing or re-using.

### IMPORTANT:

- Never use the water-through cleaning function while the AC adapter is connected.
- Do not use hot water, detergents, or abrasive cleaners.

## Blade Oiling

To maintain optimal cutting performance and blade longevity, oil the blades regularly.

1. After cleaning and drying the blades, apply a few drops of the provided oil to the moving parts of the blade.
2. Turn on the clipper for a few seconds to distribute the oil evenly.
3. Wipe off any excess oil.

## TROUBLESHOOTING

Problem	Possible Cause	Solution
Clipper does not turn on.	Battery is depleted. Power cord not properly connected (if using corded).	Charge the unit for 8 hours. Ensure the AC adapter is securely plugged into the clipper and power outlet.
Poor cutting performance.	Blades are dull or dirty. Insufficient oiling. Hair buildup in blades.	Clean the blades thoroughly and apply oil. Ensure blades are regularly oiled. Remove any hair debris from the blades.
Clipper makes unusual noise.	Blades are not properly aligned or damaged. Lack of lubrication.	Check blade alignment. If damaged, contact customer support. Apply oil to the blades.

If the problem persists after trying these solutions, please contact Panasonic customer support.

## SPECIFICATIONS

- **Model:** ER-GF82-S
- **Brand:** Panasonic
- **Color:** Silver
- **Power Source:** Rechargeable (Cordless) / AC Powered (Corded)
- **Charging Time:** Approx. 8 hours
- **Operating Time (Cordless):** Approx. 40 minutes
- **Blade Material:** Stainless Steel (45° sharp blade)
- **Cutting Lengths:** Approx. 0.5 mm (direct blade) to 70 mm (with attachments)
- **Product Dimensions (LxWxH):** 178 x 45 x 38 mm
- **Product Weight:** Approx. 0.5 kg (500 grams)
- **Connector Type:** Type A, 2-pin
- **Target User:** Family

## WARRANTY AND SUPPORT

For warranty information, product registration, or technical support, please refer to the warranty card included in your package or visit the official Panasonic website for your region.

Keep your purchase receipt as proof of purchase for warranty claims.

**Panasonic Official Website:** [www.panasonic.com](http://www.panasonic.com)

---

© 2024 Panasonic Corporation. All rights reserved.