

SEHMUA 3rd Cellular Trail Camera

SEHMUA 3rd Cellular Trail Camera User Manual

Model: 3rd Cellular Trail Camera

Brand: SEHMUA

1. INTRODUCTION

The SEHMUA 3rd Cellular Trail Camera is an advanced outdoor surveillance device designed for monitoring wildlife, securing property, or observing remote areas. It features live streaming capabilities, built-in 4G LTE connectivity, and is solar-powered for continuous operation. With a rapid 0.2-second trigger time and low-light night vision, it captures high-quality 2K images and videos, providing real-time alerts directly to your smartphone.



Figure 1: SEHMUA 3rd Cellular Trail Camera with integrated solar panel and 4G LTE SIM card.



Figure 2: The SEHMUA Cellular Security Camera deployed in a natural environment.

2. SETUP GUIDE

2.1 Package Contents

Ensure all components are present before proceeding with setup. The package typically includes the trail camera unit with integrated solar panel, a pre-installed 4G LTE SIM card, and mounting accessories. A memory card is **not** included and must be purchased separately.

2.2 SIM Card and Memory Card Installation

1. Locate the SIM card slot and memory card slot on the camera.
2. Insert the provided 4G LTE SIM card into its designated slot. Ensure it is properly seated.
3. Insert a compatible memory card (e.g., SD card, not included) into the memory card slot.
4. Attach the external antenna to the camera for optimal cellular signal reception.

Say Goodbye to Traffic Anxiety

Download and live view as long as you like are no longer bound by data traffic.



Built-in 4G LTE SIM Card

Unlimited Data Plan			
1 Month	6 Month	12 Month	24 Month
\$19.90	\$99.90	\$169.90	\$299.90

New users get 300MB of trial data and will need to subscribe to a data plan when data runs out.

Figure 3: Location of SIM card slot and details on data plans.

The image shows the back of a rugged trail camera with its antenna extended. Red arrows point to the SIM card slot and the memory card slot. A text box on the left says "Please install the antenna when using". To the right, there is a section titled "Unlimited Data SIM Card" with four data plan options: Unlimited/30day (\$19.9), Unlimited/180day (\$99.9), Unlimited/360day (\$169.9), and Unlimited/720day (\$299.9). Below this, there is a "Warm Tips:" section with three points: 1. The SIM card supports Verizon, AT&T, T-Mobile. 2. The SIM card comes with 300M data to first use, you need to top up cellular data on UBox after using out. 3. Meanwhile, you can also use your own SIM card.

Unlimited Data SIM Card

Unlimited/30day	Unlimited/180day	Unlimited/360day	Unlimited/720day
\$19.9	\$99.9	\$169.9	\$299.9

Warm Tips:

1. The SIM card supports Verizon, AT&T, T-Mobile.
2. The SIM card comes with 300M data to first use, you need to top up cellular data on UBox after using out
3. Meanwhile, you can also use your own SIM card

Figure 4: Detailed view of SIM card and memory card insertion points, and antenna installation.

2.3 App Download and Activation

To utilize the camera's remote access features, download the official SEHMUA application (e.g., Ucon app) on your smartphone. Follow the in-app instructions to activate the camera and its cellular data plan. New users typically receive 300MB of trial data upon activation. Data plans can be renewed monthly or yearly within the app. The camera is designed for use within the US cellular networks (Verizon, T-Mobile, AT&T).

3. OPERATING INSTRUCTIONS

3.1 Live Streaming and Remote Access

The SEHMUA trail camera allows for live streaming directly to your smartphone via the dedicated app. This feature enables real-time monitoring of the camera's surroundings from any location with cellular coverage. You can also share recorded videos with family members through the app.

2K Live Video via Phone APP

Remote access anytime and anywhere, watch the 2K live video via Ucon app

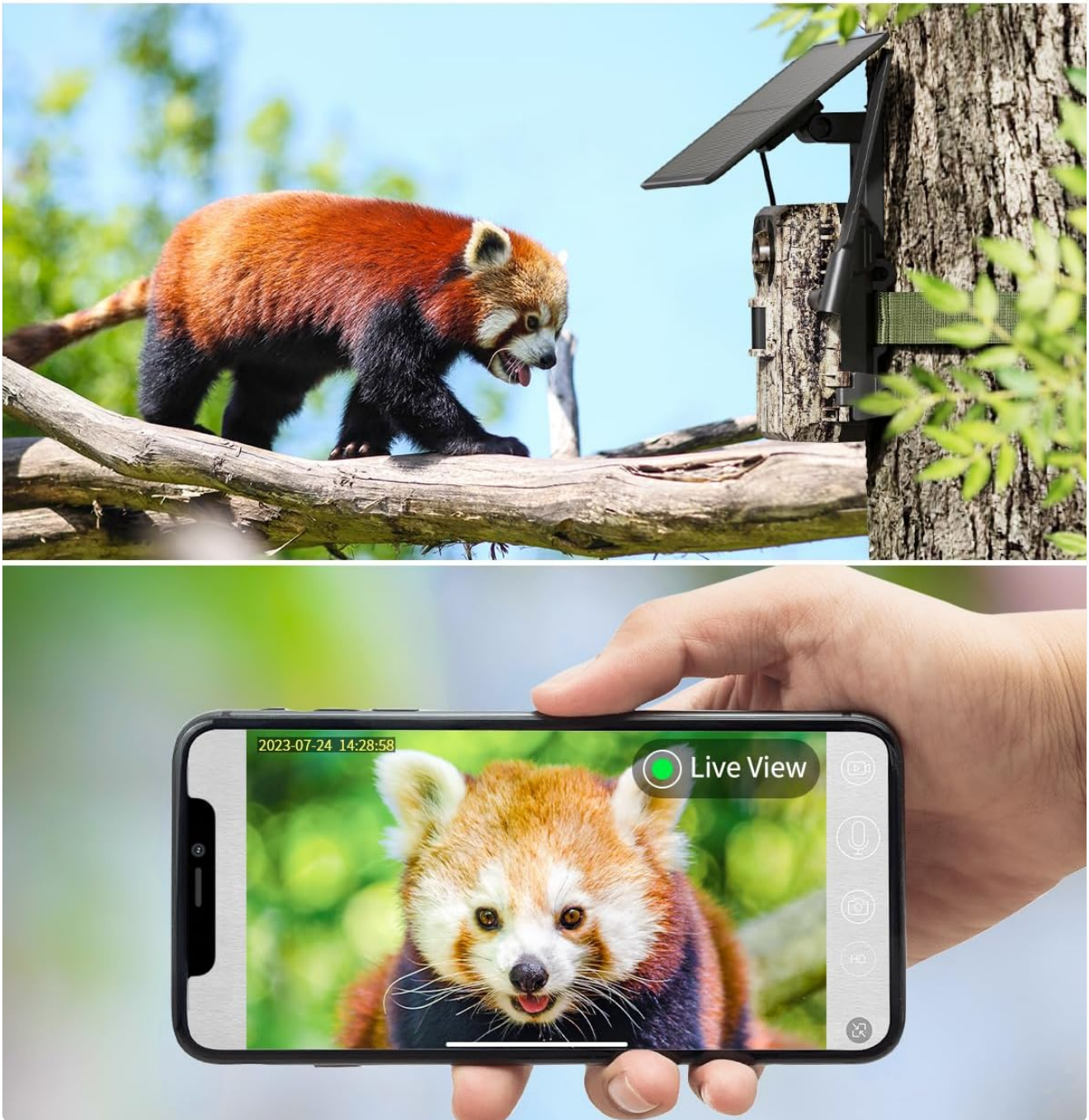


Figure 5: Live video streaming from the trail camera to a smartphone.

Remote Phone Access to Watch Live Feed Video Anytime



Figure 6: Remote access to live video feed via smartphone.

3.2 Motion Detection and Trigger Time

The camera features a rapid 0.2-second trigger time, ensuring quick capture of images and videos upon motion detection. This minimizes the chance of missing fast-moving subjects. Alerts are sent to your phone when activity is detected.

0.2s, Capture Meaningful Pictures

With 0.2s trigger speed of the trail camera, it will respond and capture the picture more quickly.

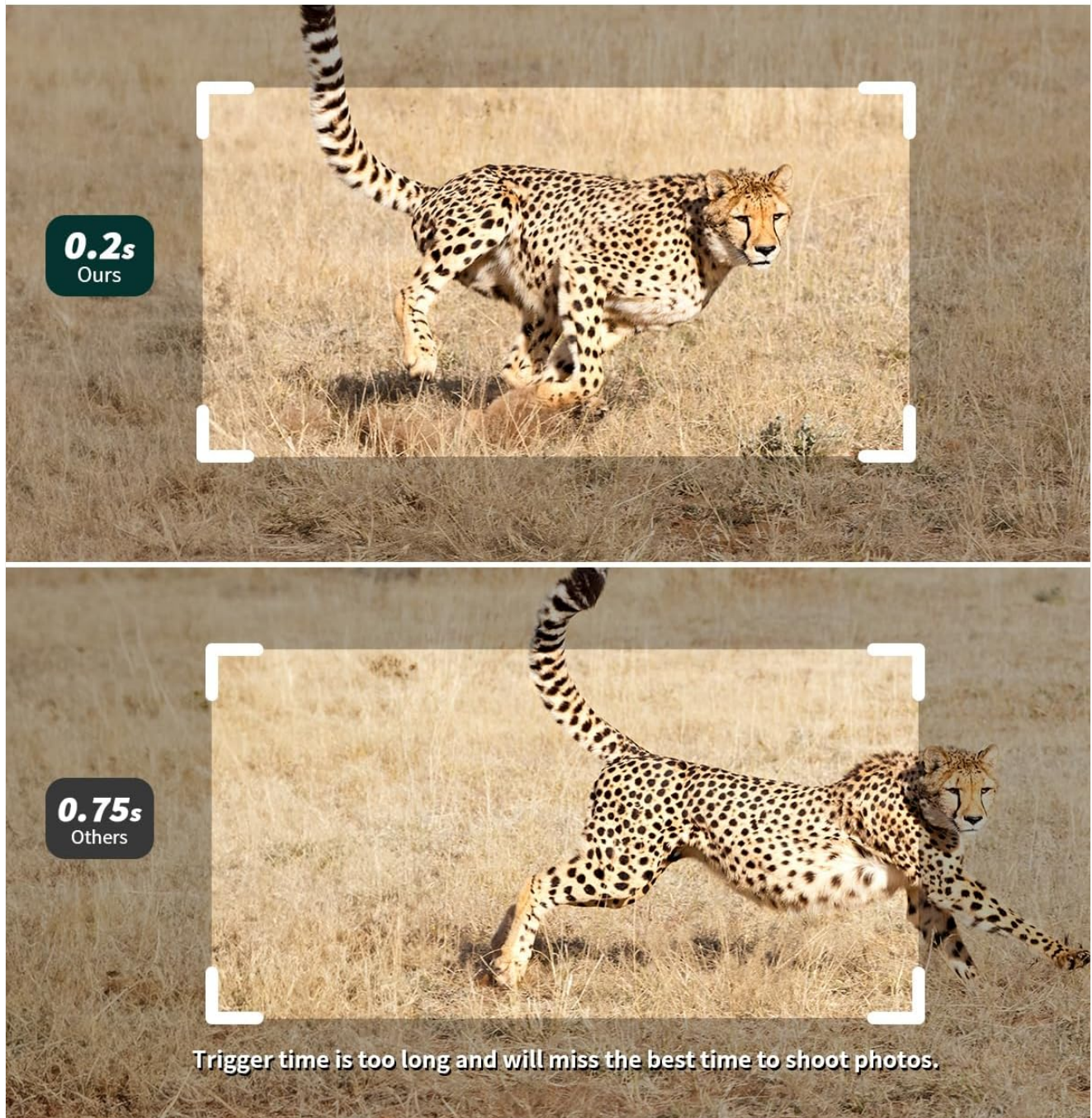


Figure 7: Illustration of the camera's fast 0.2-second trigger speed.



Figure 8: Example of a deer captured instantly due to the 0.2-second trigger speed.

Watch Snapshots Freely When Alerted

Watch the snapshots via phone freely after receiving alerts to help you find what animals run across the camera.

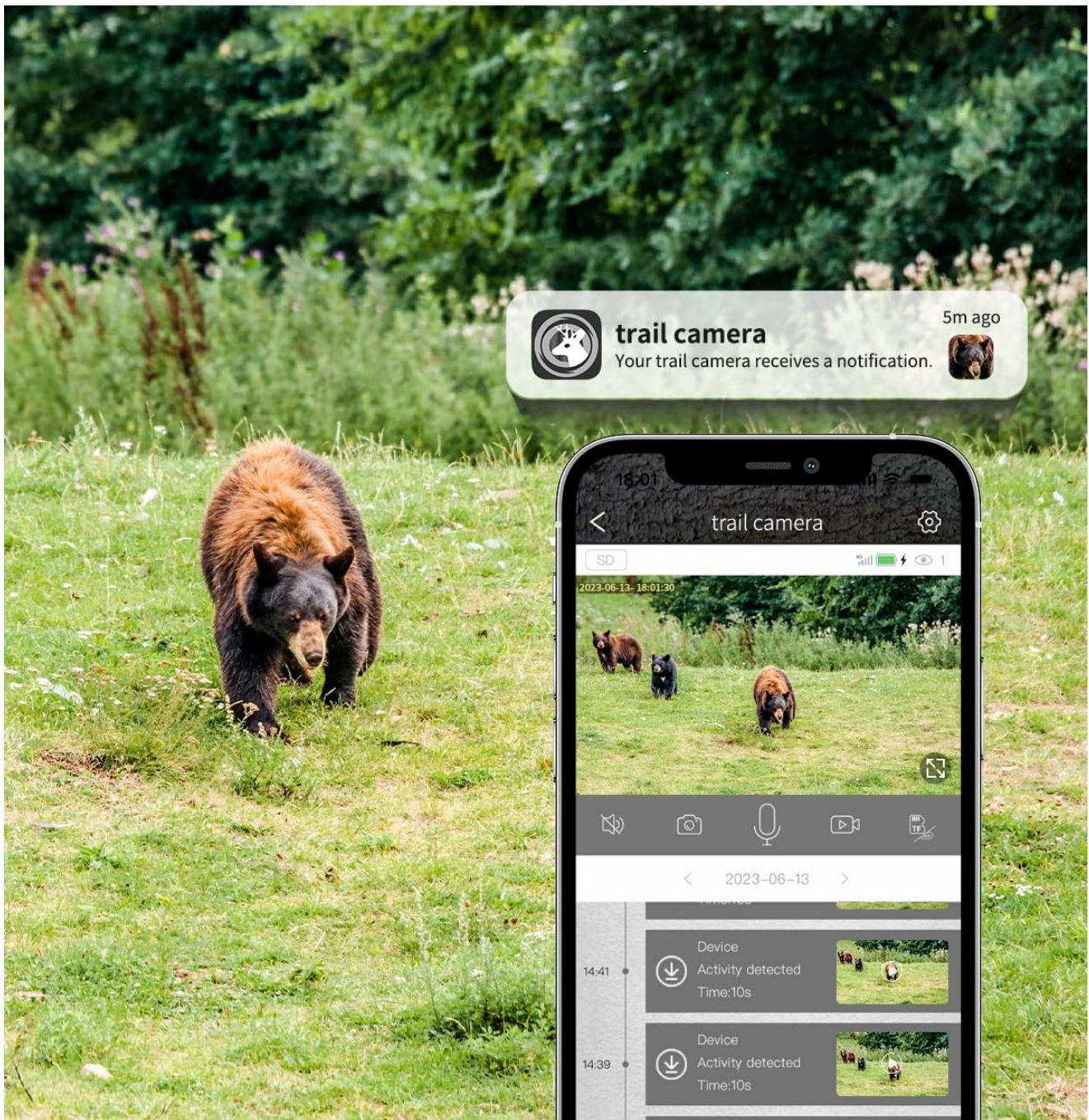


Figure 9: The smartphone application displaying motion detection alerts and captured snapshots.



Figure 10: A bear triggering the camera's motion sensor, resulting in an immediate alert to the phone.



Figure 11: Horses captured by the trail camera, with the event visible on the phone app.

3.3 Night Vision

Equipped with 940nm LED low-light infrared night vision, the camera provides clear images and videos in low-light conditions without disturbing wildlife. This ensures discreet monitoring during nighttime hours.

Night Vision with Low-light Infrared

Low-light infrared night vision is not easy to be found by animals even at night.

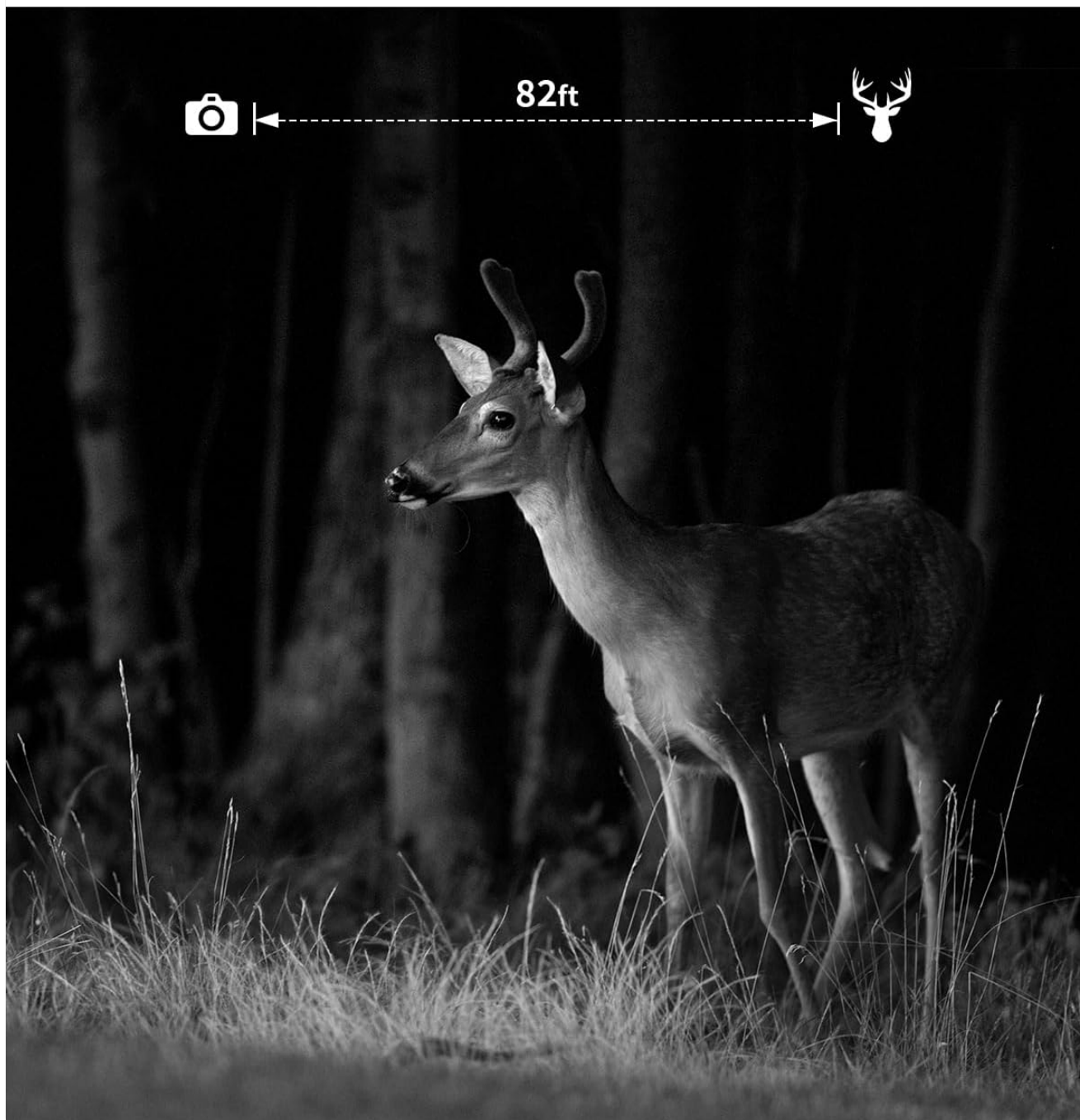


Figure 12: Night vision capability demonstrated with a deer in a forest setting.

3.4 Storage Options

Recorded photos and videos can be stored on a local memory card (not included) or uploaded to cloud storage. New users are eligible for a 30-day free trial of cloud storage. Content can be downloaded or played back directly from the phone app.

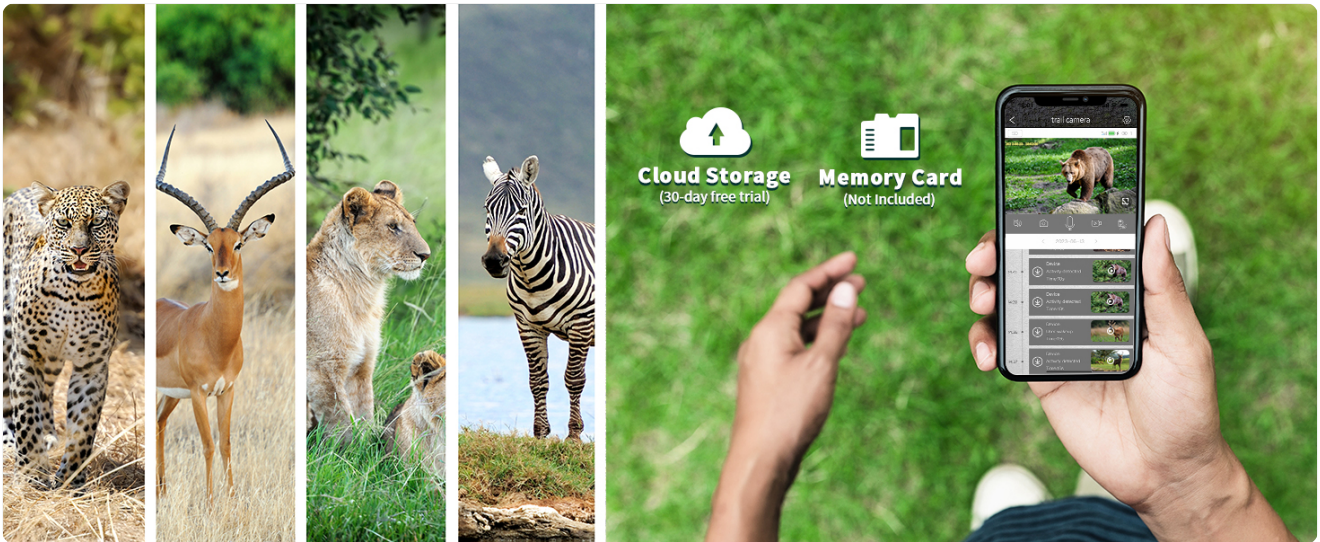


Figure 13: Overview of available storage options: cloud storage and local memory card.

4. MAINTENANCE

4.1 Power Management

The camera is equipped with a solar panel and a built-in battery, providing continuous power and eliminating the need for frequent battery replacement. Ensure the solar panel is positioned to receive adequate sunlight for optimal charging.

No Need to Replace Battery Regularly

Equipped with batteries and a 4W external solar panel (3M power cable),
365 days of continuous power.



Figure 14: The solar panel actively charging the camera's internal battery.

4.2 Durability and Weather Resistance

The camera features an IP66 waterproof rating and a sturdy body, making it suitable for various outdoor environments, including forests, farms, ranches, and construction sites. Regular inspection for debris or obstructions on the lens and solar panel is recommended to ensure optimal performance.



Figure 15: The camera's IP66 waterproof design allows it to operate effectively in rainy conditions.

5. TROUBLESHOOTING

Problem	Possible Cause	Solution
No Live Stream/Connectivity Issues	<ul style="list-style-type: none">• Weak 4G LTE signal.• SIM card not properly activated or data plan expired.• Antenna not installed or loose.• App issues or outdated firmware.	<ul style="list-style-type: none">• Relocate camera to an area with better cellular reception.• Verify SIM card activation and data plan status in the app. Renew if necessary.• Ensure antenna is securely attached.• Check for app updates or camera firmware updates. Restart the camera.
Camera not capturing images/videos	<ul style="list-style-type: none">• Memory card full or not inserted.• Low battery.• Motion sensor obstructed or settings incorrect.	<ul style="list-style-type: none">• Insert a memory card or clear existing one.• Ensure solar panel is receiving sunlight; charge if needed.• Clear any obstructions from the motion sensor. Check camera settings in the app.
Poor image/video quality	<ul style="list-style-type: none">• Dirty lens.• Insufficient lighting (for non-night vision).• Camera too far from subject.	<ul style="list-style-type: none">• Gently clean the camera lens with a soft cloth.• Ensure adequate lighting or rely on night vision in low light.• Adjust camera placement for optimal subject distance.

6. SPECIFICATIONS

Feature	Detail
Brand	SEHMUA
Model	3rd Cellular Trail Camera

Feature	Detail
Power Source	Solar Powered (with built-in battery)
Connectivity Protocol	Cellular (4G LTE)
Supported Networks	Verizon, AT&T, T-Mobile (US only)
Video Capture Resolution	2K
Trigger Time	0.2 seconds
Night Vision	940nm LED Low-light Infrared
Waterproof Rating	IP66
Storage	Memory Card (not included), Cloud Storage
Compatible Devices	Smartphone (via dedicated app)
Item Weight	1.96 pounds
Package Dimensions	7.68 x 6.3 x 4.25 inches

7. WARRANTY AND SUPPORT

For specific warranty details, please refer to the product packaging or contact SEHMUA customer service directly. SEHMUA is committed to providing excellent customer support for their products. If you encounter any issues or have questions regarding your SEHMUA 3rd Cellular Trail Camera, please reach out to the manufacturer's support channels. Contact information can typically be found on the official SEHMUA website or within the product's packaging.