

Manuals.plus /

› Wodeer /

› Wodeer Makeup Vanity Desk with Mirror and Lights (Model WD-HLG056-WH) Instruction Manual

Wodeer WD-HLG056-WH

Wodeer Makeup Vanity Desk with Mirror and Lights

Model: WD-HLG056-WH

Brand: Wodeer

INTRODUCTION

Thank you for choosing the Wodeer Makeup Vanity Desk. This manual provides essential information for the safe assembly, operation, and maintenance of your new vanity desk. Please read these instructions carefully before use and retain them for future reference.

IMPORTANT SAFETY INFORMATION

Always unplug the vanity before assembly or disassembly. Be cautious of sharp edges and heavy weight during assembly and movement. Keep electrical components dry and away from heat sources. Do not exceed the weight limit of the vanity top. Always follow the assembly instructions carefully to avoid injury or damage.

PRODUCT FEATURES

- **Mirror with Adjustable LED Lights & Hidden Storage:** The vanity desk (15.5"D x 39.3"W x 53.7"H) includes a large mirror with three lighting modes (warm yellow, warm white, cool white). Brightness and modes are adjustable via touch control. Hidden compartments behind the mirror provide additional storage.
- **RGB Cabinet Lighting & Jewelry Display Shelf:** Features built-in RGB lights, controllable via app or switch. The top shelf includes a recessed jewelry organizer for earrings and accessories.
- **Modern Glass Tabletop Design:** A transparent glass tabletop offers a contemporary aesthetic and allows visibility of items stored in the drawer below.
- **Built-In Charging Station & Hair Dryer Holder:** Equipped with 2 AC outlets and 2 USB ports for charging devices and powering hair tools. A built-in hair dryer rack is included for convenience.
- **Smart Storage for Makeup & Accessories:** Provides 3 drawers, 2 cabinets, and open shelving. A large drawer contains a 9-grid organizer, and a jewelry tray is included for rings, bracelets, and earrings.



Figure 1: Overview of Wodeer Makeup Vanity Desk features.

Hidden Storage Shelves



Figure 2: Detail of hidden storage shelves behind the mirror.

RGB LED Cabinet



Over 60,000 Colors



Over 60.000
Colors



Brightness
Adjustable



Music
Mode



Mic
Mode



Timing
Function

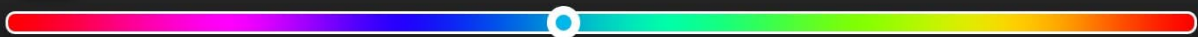
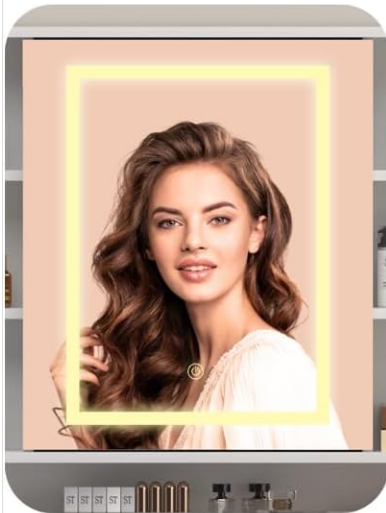
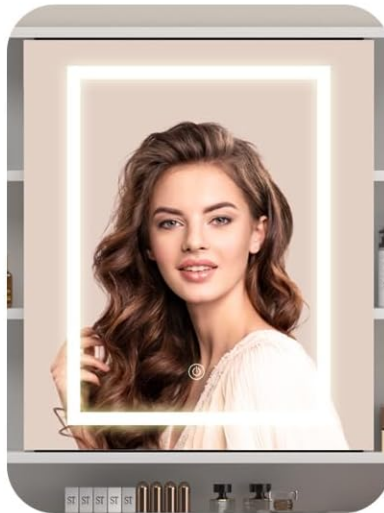


Figure 3: RGB LED Cabinet with control options.

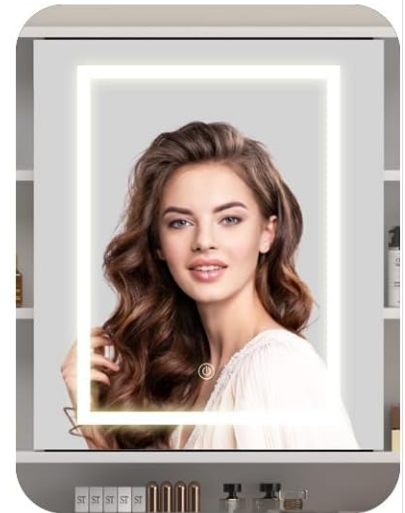
3 Light Colirs & Adjustable Brightness



Warm Yellow



Warm White



Cold White



Touch the switch to change the light color



Press and hold it to adjust the brightness



Figure 4: Mirror lighting modes and brightness adjustment.

The mirror offers three distinct light colors: Warm Yellow, Warm White, and Cold White. Users can switch between these colors with a simple touch. To adjust the brightness, press and hold the touch switch until the desired intensity is reached.



Figure 5: Built-in charging station and hair dryer holder.

ASSEMBLY INSTRUCTIONS

The Wodeer Makeup Vanity Desk is designed for straightforward assembly. All parts are labeled, and a detailed instruction manual is included in the packaging. Please follow these general guidelines:

1. **Unpack and Verify:** Carefully unpack all components and compare them against the parts list provided in your assembly manual to ensure all pieces are present and undamaged.
2. **Prepare Your Workspace:** Choose a clean, flat, and spacious area for assembly. Lay down a soft cloth or blanket to protect the vanity components and your floor.
3. **Follow Step-by-Step Instructions:** Refer to the included detailed assembly manual. Each step is illustrated and clearly described. Do not skip steps.
4. **Use Correct Hardware:** Use only the hardware provided for each specific step. Ensure all screws and fasteners are tightened securely, but do not overtighten to avoid damaging the wood.
5. **Electrical Connections:** Connect all electrical components (LED lights, charging station) as instructed. Ensure the vanity is

unplugged during this process.

6. **Two-Person Assembly Recommended:** For certain steps, especially when handling larger or heavier sections like the mirror unit, two people may be required for safe and efficient assembly.
7. **Final Check:** Once assembled, ensure the vanity is stable and all drawers and doors operate smoothly.

If you encounter any difficulties during assembly, please refer to the troubleshooting section or contact customer support.

SETUP

Positioning the Vanity

Place the vanity desk on a flat, stable surface. Ensure there is adequate space around the desk for opening drawers, cabinets, and the mirror. Avoid placing the vanity in direct sunlight or near heat sources to prevent material damage.

Connecting Power

Plug the vanity's main power cord into a standard 120V AC outlet. The built-in charging station (2 AC outlets, 2 USB ports) will then be active for your devices. Ensure the power cord is not pinched or obstructed.

OPERATING INSTRUCTIONS

Adjustable LED Mirror Lights

- **Power On/Off:** Touch the power icon on the mirror surface to turn the LED lights on or off.
- **Change Light Mode:** Briefly touch the power icon to cycle through the three light modes: Warm Yellow, Warm White, and Cool White.
- **Adjust Brightness:** Press and hold the power icon to continuously adjust the brightness level. Release when the desired brightness is achieved.

RGB Cabinet Lighting

- **Control Options:** The RGB lights in the cabinet can be controlled via a dedicated app on your smartphone or a physical switch (refer to your assembly manual for switch location).
- **Color Selection:** Use the app or switch to select from over 60,000 colors.
- **Brightness Adjustment:** Adjust the intensity of the RGB lights using the app or switch.
- **Special Modes:** Explore music mode, mic mode, and timing functions available through the app for dynamic lighting effects.

Using Storage Features

- **Drawers:** Gently pull the gold knobs to open the drawers. The large drawer under the glass top includes a 9-grid organizer and a jewelry tray.
- **Cabinets:** Open the cabinet doors to access shelves for larger items. The glass-front cabinet features adjustable glass shelves.
- **Hidden Mirror Storage:** Open the mirror panel to reveal hidden shelves for discreet storage.
- **Hair Dryer Holder:** Place your hair dryer in the designated holder on the side of the desk for easy access.

Your browser does not support the video tag.

Video 1: Official Wodeer Makeup Vanity Desk overview, demonstrating storage and lighting features.

MAINTENANCE

- **Cleaning Surfaces:** Wipe all surfaces with a soft, damp cloth. Avoid abrasive cleaners or harsh chemicals that could damage the finish.
- **Mirror Cleaning:** Use a glass cleaner specifically designed for mirrors. Spray onto a soft cloth, then wipe the mirror surface. Do not spray directly onto the mirror to prevent liquid from seeping into the electrical components.
- **Electrical Components:** Ensure all electrical connections are secure. Keep the charging station and LED light components dry.
- **Drawer and Door Mechanisms:** Periodically check that drawers slide smoothly and door hinges are secure. Lubricate if necessary with a silicone-based spray.
- **Avoid Overloading:** Do not place excessively heavy items on shelves or in drawers to prevent damage or instability.

TROUBLESHOOTING

Problem	Possible Cause	Solution
LED Mirror Lights not working	Power cord unplugged; loose connection; faulty power adapter.	Ensure the vanity is plugged into a working outlet. Check all electrical connections. If issues persist, contact customer support.
RGB Cabinet Lights not changing color/responding	App not connected; remote control battery low; loose connection.	Verify app connection or replace remote battery. Check light strip connections.
Drawers sticking or not sliding smoothly	Obstruction in drawer slide; misaligned rails; excessive weight.	Remove items and check for obstructions. Ensure rails are properly aligned. Reduce weight in the drawer.
Vanity feels unstable	Loose assembly screws; uneven floor.	Tighten all assembly screws. Use shims under the legs if the floor is uneven.

For problems not listed here or if solutions do not resolve the issue, please contact Wodeer customer support.

SPECIFICATIONS

Model Number: WD-HLG056-WH

Brand: Wodeer

Material: Engineered Wood

Product Dimensions: 15.5"D x 39.3"W x 53.7"H

Item Weight: 74.7 pounds

Color: White

Assembly Required: Yes

Power Outlets: 2 AC outlets, 2 USB ports

Mirror Lighting: 3 adjustable LED light modes (Warm Yellow, Warm White, Cool White)

Cabinet Lighting: RGB LED lights, app/switch controlled

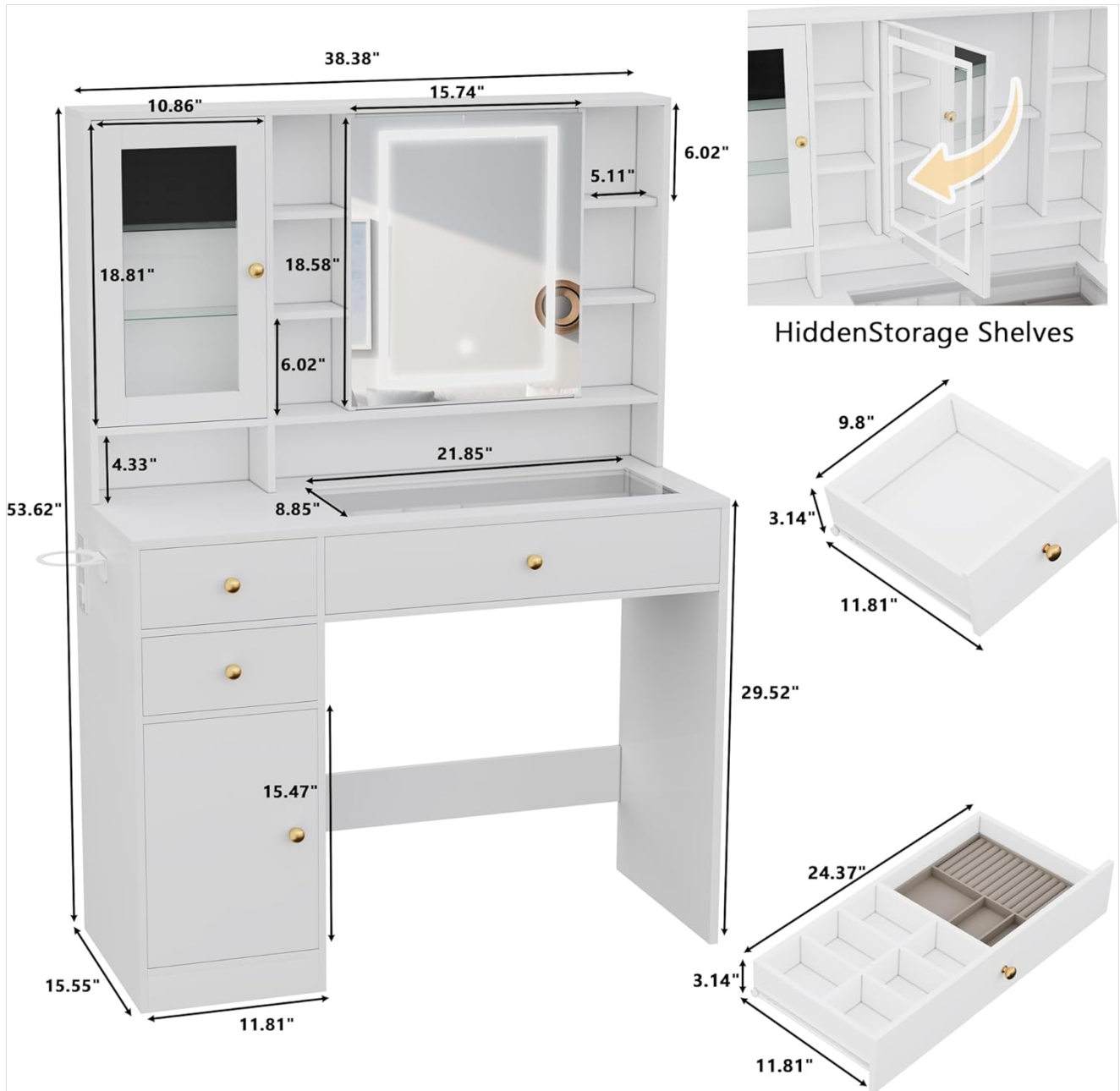


Figure 6: Detailed product dimensions.

WARRANTY AND CUSTOMER SUPPORT

Wodeer products are manufactured with quality and customer satisfaction in mind. For specific warranty details, please refer to the documentation included with your purchase or visit the official Wodeer website.

If you have any questions, require assistance with assembly, or need to report a missing/damaged part, please contact Wodeer customer support through the retailer where you purchased the product or via the contact information provided on the Wodeer brand store page.

Wodeer Store: Visit the Wodeer Store on Amazon