

Eskiin Eskiin-01

Eskiin Filtered Showerhead Instruction Manual


Model: Eskiin-01


1. PRODUCT OVERVIEW


The Eskiin Filtered Showerhead is designed to enhance your showering experience by filtering and removing harmful chemicals and minerals from your water. This process contributes to softer hair and skin, and can help reduce issues like dandruff and dry skin. It features a high-pressure design for a consistent water flow.



Ditch Your Outdated Showerhead!

Say goodbye to chlorine & hard water damage 

Get 2.5x better water pressure instantly 

Upgrade in minutes for a lifetime of benefits 

eskiin

Image: The Eskiin Filtered Showerhead in a chrome finish, installed and actively dispensing water, highlighting its design and water flow.

2. WHAT'S IN THE BOX

- 1 x Filtered Showerhead
- 1 x Filter (pre-installed)
- 1 x Wrench
- 1 x Plumbers Tape
- 1 x Installation Guide

upgrade your skin and hair in less than 3 minutes.

self-care has never been this simple.

1.

**take off your old
showerhead**



2.

**twist on your
eskiin**



3.

**experience the best
shower of your life**



everything you need, all in one box

you'll receive:

- 1 - eskiin filtered shower head
- 1 - eskiin filter (inside of the showerhead)
- 1 - eskiin wrench
- 1 - eskiin plumber's tape
- 1 - installation guide with video tutorial

Image: The Eskiin Filtered Showerhead and its included accessories, such as the filter, wrench, and plumber's tape, neatly arranged in its packaging.

3. SETUP AND INSTALLATION

The Eskiin Filtered Showerhead is designed for easy installation, typically taking only a few minutes. It is compatible with standard 1/2" threading.

Installation Steps:

1. Remove your existing showerhead by twisting it counter-clockwise.
2. Clean any residue from the shower arm threads.
3. Apply the included plumber's tape clockwise around the threads of the shower arm (typically 3-4 wraps).
4. Screw the Eskiin Filtered Showerhead onto the shower arm by hand, turning clockwise until snug.
5. Use the provided wrench to gently tighten the showerhead an additional quarter turn to ensure a secure, leak-free fit. Do not overtighten.
6. Turn on the water to check for leaks and proper function.

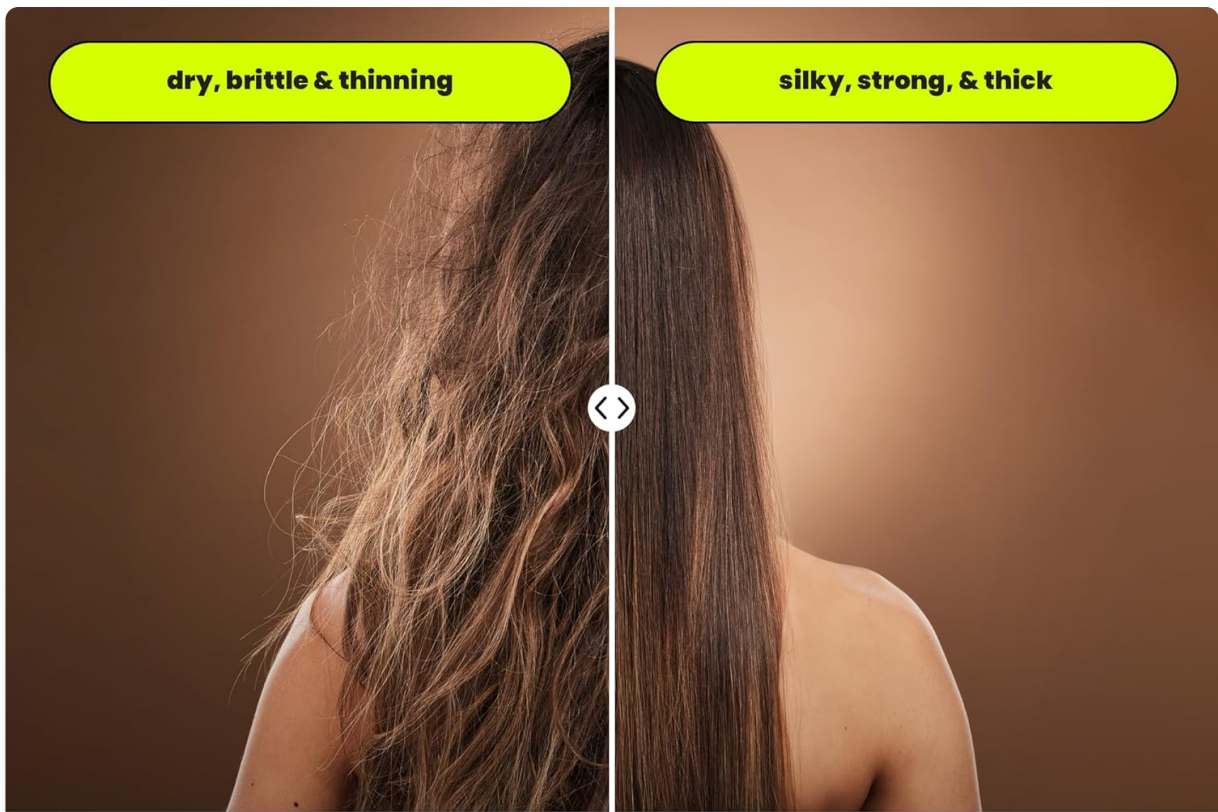
Visual Installation Guide:

Your browser does not support the video tag.

Video: A step-by-step guide demonstrating the quick and easy installation process of the Eskiin Filtered Showerhead.

Flow Restrictor Options:

Your showerhead includes optional flow restrictors (1.8 GPM and 2.5 GPM) to comply with local water regulations or to adjust water pressure to your preference. Consult your local regulations to determine the appropriate GPM for your area. The showerhead comes with a mesh gasket pre-installed; remove this to insert your chosen flow restrictor.



before & after eskiin

Stop your hard water from leaving your hair feeling dry and brittle, and say hello to soft, shiny hair with eskiin.

Less harsh contaminants, less hairloss & thinning.

Image: A visual comparison illustrating the enhanced water pressure provided by the Eskiin Filtered Showerhead compared to a standard showerhead.

4. OPERATING INSTRUCTIONS

Once installed, operate your Eskiin Filtered Showerhead like any standard showerhead. Turn on your shower faucet to enjoy a high-pressure, filtered water flow. The internal filter works continuously to purify the water as it passes through the showerhead.

Benefits of Filtered Water:

- Removes chlorine and heavy metals, which can cause dryness and irritation.
- Softens hard water, leading to healthier, softer hair and skin.
- Helps protect colored hair from fading and reduces dandruff.

Your browser does not support the video tag.

Video: An informational video explaining how the showerhead filters out chlorine and heavy metals from water.

Your browser does not support the video tag.

Video: A demonstration of how filtered water contributes to softer hair and moisturized skin.

5. MAINTENANCE

Filter Replacement:

The internal filter should be replaced approximately every 12 weeks to maintain optimal performance and water pressure. Replacement filters are available from Eskiin.

Steps for Filter Replacement:

1. Turn off the water supply to your shower.
2. Unscrew the showerhead from the shower arm.
3. Carefully open the showerhead casing to access the old filter.
4. Remove the old filter and dispose of it.
5. Insert a new Eskiin filter into the showerhead, ensuring it is seated correctly.
6. Reassemble the showerhead and screw it back onto the shower arm, following the installation steps outlined in Section 3.

Your browser does not support the video tag.

Video: A demonstration showing the simple process of changing the filter in the Eskiin Filtered Showerhead.

6. TROUBLESHOOTING

- **Low Water Pressure:** Ensure the filter is not clogged. Replace the filter if it has been in use for more than 12 weeks. Check that the flow restrictor (if installed) is appropriate for your desired pressure.
- **Leaks:** Ensure the plumber's tape is correctly applied to the shower arm threads and that the showerhead is tightened securely. Do not overtighten.
- **Reduced Filtration Effectiveness:** Replace the filter if you notice a return of hard water symptoms or chemical odors.

7. SPECIFICATIONS

- **Brand:** Eskiin
- **Model:** Eskiin-01
- **Color:** Black
- **Material:** Metal
- **Style:** Modern
- **Shape:** Round
- **Finish Type:** Polished
- **Installation Type:** Wall Mounted
- **Product Dimensions:** 5.5"L x 4.5"W
- **Number of Settings:** 1
- **Number of Jets:** 1
- **Efficiency:** 2.0 GPM (Gallons Per Minute)
- **Special Feature:** Filtered water, high pressure water softening, proprietary shower filter
- **Item Weight:** 2.44 pounds
- **UPC:** 198715853797

8. WARRANTY AND SUPPORT

Eskiin stands by the quality of its products. Your purchase is covered by a 30-day refund/replacement return policy. For any questions, concerns, or support needs, please refer to the contact information provided in your product packaging or visit the official Eskiin website.

The Eskiin Promise: We meticulously scrutinize every step of the manufacturing process and conduct third-party inspections and lab tests to ensure you receive a high-quality product.