

[Manuals.plus](#) /

> [minisopuru](#) /

> Minisopuru 8-in-1 Mac mini Dock & Stand with M.2 NVMe SSD Enclosure (for M1/M2 Mac mini) User Manual

minisopuru 8-in-1 Mac mini Hub

Minisopuru 8-in-1 Mac mini Dock & Stand with M.2 NVMe SSD Enclosure User Manual

Model: 8-in-1 Mac mini Hub

1. INTRODUCTION

Thank you for choosing the Minisopuru 8-in-1 Mac mini Dock & Stand. This device is designed to enhance your Mac mini experience by expanding storage capabilities and providing a versatile array of connectivity options. It also serves as a stylish and functional stand, optimizing desktop space and promoting efficient heat dissipation.



Image: The Minisopuru 8-in-1 Mac mini Dock & Stand, showcasing its sleek design and functionality.

2. PRODUCT OVERVIEW & FEATURES

The Minisopuru 8-in-1 Mac mini Dock & Stand integrates multiple functionalities into a single, compact unit:

- **M.2 NVMe SSD Enclosure:** Supports up to 10Gbps M.2 PCIe NVMe SSDs (M, B+M Key size 2230/2242/2260/2280) for convenient internal storage expansion up to 2TB. (SSD not included)
- **High-Speed USB Ports:**
 - 1 x 10Gbps USB-C 3.2 Gen2 port
 - 1 x 10Gbps USB-A 3.2 Gen2 port
 - 2 x USB-A 2.0 ports (for peripherals like mouse/keyboard)

Note: USB-C/A ports support data transmission only, not video output or charging.

- **Card Reader:** 1 x SD/TF card slot (UHS-I 104MB/S) for fast data transfer and backup.
- **Audio Connectivity:** 1 x Headphone Jack port.
- **Integrated Stand Design:** Improves desktop organization, ensures efficient heat dissipation for the Mac mini, and features non-slip, scratch-resistant silicone pads.



Image: Front view of the Minisopuru Mac mini Dock, highlighting its various ports and sleek design.

Your browser does not support the video tag.

Video: A brief overview of the Minisopuru MH218B Mac Mini Dock, demonstrating its features and compact form factor.

3. COMPATIBILITY

This Mac mini USB hub is designed for broad compatibility with modern Apple devices:

- **Mac mini Models:** Perfectly fits Mac mini 2018 or newer models, including:
 - 2018 Mac mini
 - 2020 Mac mini M1
 - 2023 Mac mini M2 or M2 Pro

Note: Mac mini models from 2017 and earlier are not supported. This device is not compatible with Mac mini M4.

- **Other Devices:** Also supports all laptops with Type-C Thunderbolt ports (e.g., MacBook Pro/Air) and iPad Pro.

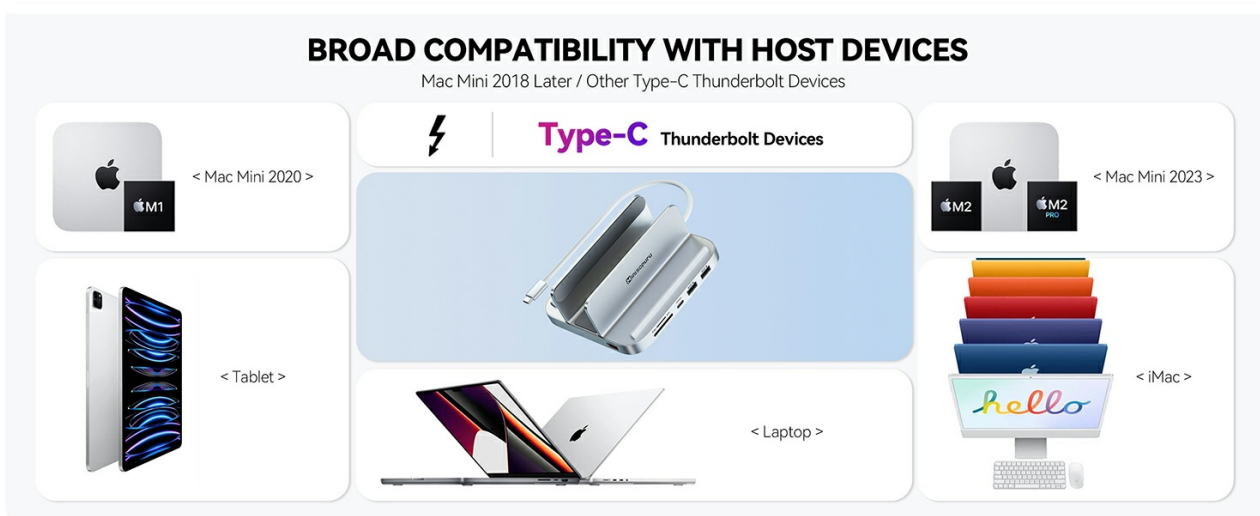


Image: Visual representation of compatible devices including Mac mini M1/M2, MacBooks, and iPads.

4. SETUP

4.1. Installing the M.2 NVMe SSD

The dock features an M.2 NVMe SSD enclosure for expanding your Mac mini's storage. Follow these steps to install an SSD (SSD not included):

1. **Remove the Bottom Cover:** Use the provided screwdriver to remove the screws securing the bottom cover of the dock.
2. **Insert SSD:** Gently insert your M.2 NVMe SSD into the slot at a 45-degree angle.
3. **Secure SSD:** Press the SSD down and fix it with the provided rubber cap.
4. **Apply Thermal Pad:** Place the thermal pad (included) onto the SSD for heat dissipation.
5. **Close Cover:** Reattach the bottom cover and secure it with the screws.

SSD INSTALLATION STEPS FOR MAC MINI HUB

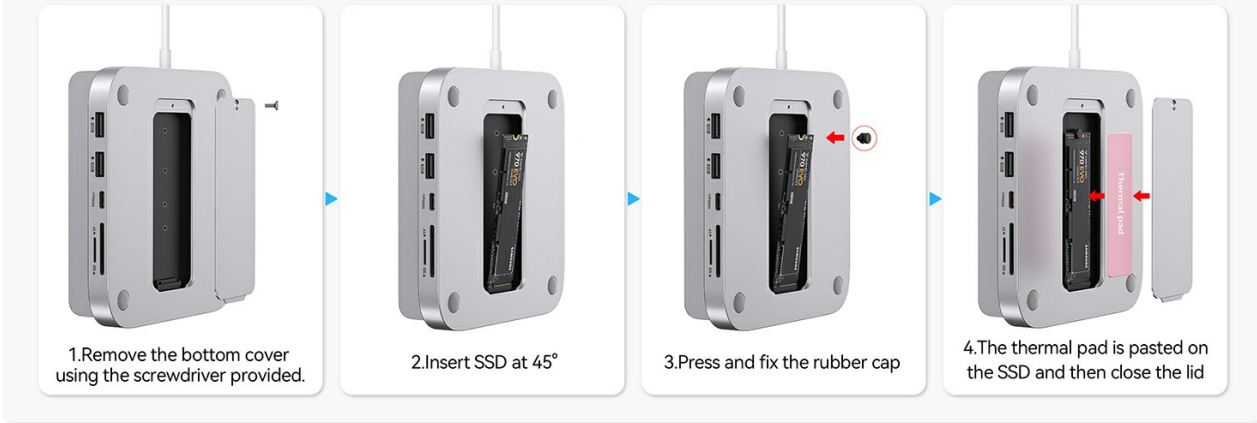


Image: Detailed steps for installing an M.2 NVMe SSD into the Minisopuru dock.

4.2. Connecting the Dock to Mac mini

Place your compatible Mac mini into the stand. Connect the integrated USB-C cable from the dock to a Thunderbolt/USB-C port on your Mac mini. This single connection enables all the dock's features.



Image: A Mac mini securely positioned in the vertical stand of the Minisopuru Dock.

4.3. Initializing the SSD

After installing the SSD and connecting the dock, you may need to initialize and format the new SSD for use with your Mac mini:

1. Connect the dock to your Mac mini.
2. Open **Disk Utility** on your Mac mini (Applications > Utilities > Disk Utility).
3. Locate your new SSD in the sidebar. It may appear as an uninitialized drive.
4. Select the SSD and click **Erase**.
5. Choose a name, format (e.g., APFS for macOS), and scheme (e.g., GUID Partition Map).
6. Click **Erase** again to confirm. The SSD will now be ready for use.

5. OPERATING

Once set up, the Minisopuru dock provides easy access to its expanded ports:

- **USB-C 3.2 Gen2 (10Gbps):** Connect high-speed peripherals like external SSDs or other USB-C devices for rapid data transfer.
- **USB-A 3.2 Gen2 (10Gbps):** Ideal for connecting fast USB-A devices.
- **USB-A 2.0 (480Mbps):** Use for standard peripherals such as keyboards, mice, printers, or USB flash drives.
- **SD/TF Card Slots:** Insert SD or TF (MicroSD) cards for quick photo and video transfers (UHS-I 104MB/S).
- **Audio Jack:** Connect headphones or external speakers for audio output.



Image: Illustration emphasizing the 10Gbps data transfer capabilities of the USB-C and USB-A 3.2 Gen2 ports.



TF+SD FAST BACKUP

Image: Close-up of the TF and SD card slots, highlighting their use for fast data backup.

6. MAINTENANCE

- **Cleaning:** Use a soft, dry cloth to clean the exterior of the dock. Avoid liquid cleaners.
- **Heat Dissipation:** The integrated stand design is optimized for heat dissipation. Ensure the Mac mini and dock are placed in a well-ventilated area to prevent overheating.
- **Cable Management:** Keep cables organized to prevent strain on ports and maintain desktop neatness.
- **Non-Slip Pads:** The silicone pads on the stand help stabilize the Mac mini and protect its surface. Ensure they are clean and intact.



ANTI-SLIP BOTTOM DESIGN

An anti-slip silicone ring is added to the bottom to improve the stability of the desktop and eliminate your worries.

Image: Underside view of the dock, showing the anti-slip silicone rings for stability.

7. TROUBLESHOOTING

- **SSD Not Recognized:**
 - Ensure the SSD is correctly installed and seated firmly in the enclosure.
 - Check Disk Utility to see if the SSD is detected but uninitialized. Follow initialization steps if necessary.
 - Verify the USB-C connection between the dock and Mac mini is secure.
- **Peripheral Not Working:**

- Ensure the peripheral is properly connected to the correct port on the dock.
 - Try connecting the peripheral directly to your Mac mini to rule out a device issue.
 - Restart your Mac mini.
- **Slow Data Transfer:**
 - Ensure you are using the 10Gbps USB-C or USB-A 3.2 Gen2 ports for high-speed devices.
 - Check the specifications of your peripheral and cable to ensure they support the desired speeds.
- **Dock Disconnects:**
 - Ensure the USB-C cable connecting the dock to the Mac mini is not loose or damaged.
 - Avoid moving the Mac mini or dock excessively during operation.

8. SPECIFICATIONS

Feature	Detail
Product Dimensions	5.1 x 4.7 x 2.3 inches
Item Weight	15.7 ounces
Number of Ports	8
Total USB Ports	5
Hardware Interface	MicroSD, USB, USB Type C
M.2 SSD Support	Up to 2TB M.2 PCIe NVMe SSDs (M, B+M Key size 2230/2242/2260/2280)
SD/TF Card Speed	UHS-I 104MB/S
USB Data Transfer Speed	10Gbps (USB-C 3.2 Gen2, USB-A 3.2 Gen2), 480Mbps (USB-A 2.0)
Compatible Mac mini Models	2018, 2020 M1, 2023 M2/M2 Pro

9. WARRANTY AND SUPPORT

The Minisopuru Mac mini dock includes a **12-month customer service guarantee**. For any issues or inquiries, **24/7 customer service** is available to provide timely and quick solutions. Please refer to the contact information provided in your product packaging or visit the official Minisopuru website for support.