

Manuals+

[Q & A](#) | [Deep Search](#) | [Upload](#)

manuals.plus /

› [medicube](#) /

› [medicube PDRN Pink Peptide Serum with Salmon DNA Instruction Manual](#)

medicube 213124

medicube PDRN Pink Peptide Serum with Salmon DNA Instruction Manual

Brand: medicube | Model: 213124

1. INTRODUCTION

The medicube PDRN Pink Peptide Serum with Salmon DNA is formulated to target dullness and boost skin elasticity. This serum aims to enhance skin radiance and resilience, contributing to a clearer, more luminous complexion and a more even skin tone.



Image 1: medicube PDRN Pink Peptide Serum bottle with dropper.

2. KEY FEATURES & INGREDIENTS

This serum features a blend of active ingredients designed to support skin health and appearance:

- **Salmon DNA PDRN:** Extracted from salmon, this ingredient stimulates skin renewal and repair, promoting a clearer, more luminous complexion and improving skin health for a natural glow.
- **Five Types of Peptide Complex:** Contributes to skin firmness and helps lock in lasting hydration.
- **Niacinamide:** Enhances clarity and radiance, supporting a healthy, dewy glow.
- **Adenosine:** Works to deeply hydrate and smooth skin texture.
- **Ocimum Sanctum (Holy Basil) Leaf Extract:** Provides effective care for uneven skin tone and elasticity.

Pink PDRN Serum

Hero Ingredients That Make a Difference



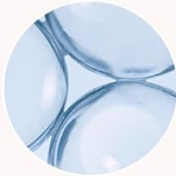
Salmon DNA PDRN

Hydrates and strengthens the skin's moisture barrier for smoother, more even-looking skin.



Niacinamide

Enhances clarity and radiance for a healthy, dewy glow.



Peptide

Firms the skin and helps lock in lasting hydration.

*The information above pertains only to the characters of the raw materials



Image 2: Visual representation of key ingredients: Salmon DNA PDRN, Niacinamide, and Peptides.

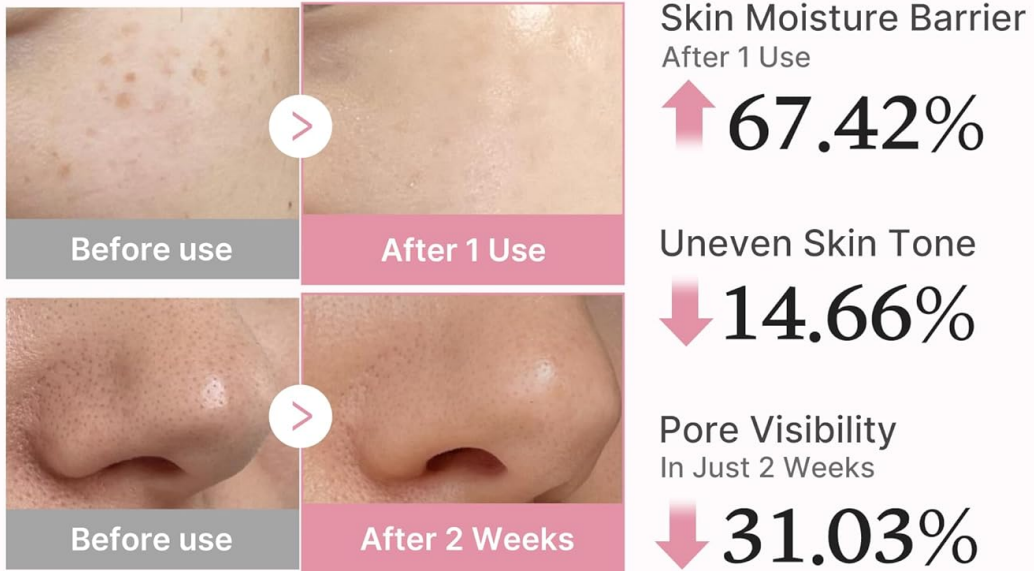
3. BENEFITS & VISIBLE RESULTS

Consistent use of the medicube PDRN Pink Peptide Serum can lead to several skin improvements:

- **Enhanced Skin Moisture Barrier:** Strengthens the skin's protective barrier, increasing its resistance to external aggressors and pollutants.
- **Improved Skin Tone:** Helps to reduce uneven skin tone, promoting a more uniform complexion.
- **Reduced Pore Visibility:** Contributes to minimizing the appearance of pores.
- **Increased Skin Firmness:** Supports skin elasticity, leading to firmer-looking skin.
- **Deep Hydration:** Provides lasting moisture, resulting in a smoother skin texture.

Pink Glow Filter Effect

Strengthen, Clarify & Glow



*Clinically Tested by 'Global Institute of Dermatological Sciences'/
Images Provided by Global Ambassadors/ Results may vary depending on individual skin types.

Image 3: Visual results showing improvements in skin moisture barrier, uneven tone, and pore visibility.

Clinically Proven to Improve Skin Firmness In Just 2 Weeks

*Clinically Tested by 'Global Institute of Dermatological Sciences'/ Results may vary depending on individual skin types.



Image 4: Clinically proven improvements in skin firmness across different facial areas.

4. HOW TO USE

1. After cleansing your face or applying toner, dispense 2-3 drops of the serum onto your face.
2. Gently massage the serum into your skin in circular motions until it is fully absorbed.
3. For additional hydration, you may layer 1-2 more times as needed.



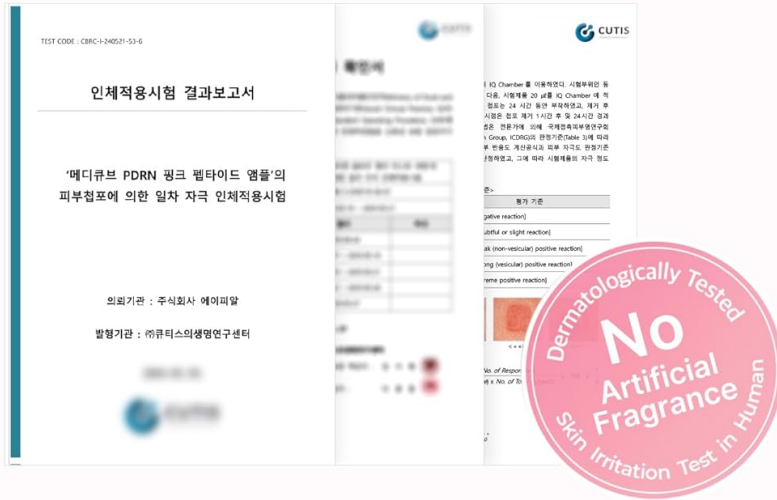
Image 5: Step-by-step visual guide for serum application.

5. TIPS FOR ENHANCED RESULTS

To maximize the benefits of the PDRN Pink Peptide Serum, consider incorporating it into a comprehensive skincare routine:

- **Pair with medicube Booster Pro:** For enhanced results, this serum can be used in conjunction with the medicube Booster Pro device.
- **Layering:** Apply after toner and before heavier creams or moisturizers.

Gentle & Suitable For ALL



✓ Dermatologically Tested

Low-irritation formula suitable for all skin types.

✓ No Artificial Fragrance or Colorants

The Pink Formula is Naturally Colored by Pink Vitamin B12 and does not stain the skin.

Image 6: Suggested use of the serum with other medicube products for a complete routine.

6. COMPATIBILITY & SAFETY INFORMATION

The medicube PDRN Pink Peptide Serum is formulated to be mild and gentle, suitable for all skin types. It has been dermatologist-tested and is low-irritating.

- **No Artificial Fragrance or Colorants:** The pink color of the serum is naturally derived from Pink Vitamin B12 and does not stain the skin.
- **External Use Only:** This product is intended for external application only.
- **Discontinue if Irritation Occurs:** If any irritation or adverse reaction occurs, discontinue use immediately.
- **Keep Out of Reach of Children:** Store the product in a safe place away from children.

Use Together & Boost the Synergy

Pair it with our Booster Pro for enhanced results!

Step 01



Step 02



Step 03



Step 04



Step 05



Image 7: Information on the serum's gentle formulation and testing.

7. FULL INGREDIENT LIST

Water, Glycerin, Dipropylene Glycol, Isopropyl Myristate, Glycereth-26, Niacinamide, 1,2-Hexanediol, Sodium DNA, Butylene Glycol, Polyglycerin-3, Sodium Acrylate/Sodium Acryloyldimethyl Taurate Copolymer, Polyisobutene, Acrylates/C10-30 Alkyl Acrylate Crosspolymer, Milt Extract, Tromethamine, Glyceryl Acrylate/Acrylic Acid Copolymer, PVM/MA Copolymer, Ethylhexylglycerin, Caprylyl Glycol, Fragrance, Melia Azadirachta Leaf Extract, Adenosine, Caprylyl/Capryl Glucoside, Sorbitan Oleate, Melia Azadirachta Flower Extract, Sodium Hyaluronate, Disodium EDTA, Curcuma Longa (Turmeric) Root Extract, Cyanocobalamin, Hydrolyzed Collagen, Ubiquinone, Ocimum Sanctum Leaf Extract, Corallina Officinalis Extract, Palmitoyl Pentapeptide-4, Palmitoyl Tripeptide-1, Palmitoyl Tetrapeptide-7, Copper Tripeptide-1, Acetyl Hexapeptide-8, Salmon Egg Extract, Atelocollagen.

Ingredients

Water, Glycerin, Dipropylene Glycol, Isopropyl Myristate, Glycereth-26, Niacinamide, 1,2-Hexanediol, Sodium DNA, Butylene Glycol, Polyglycerin-3, Sodium Acrylate/Sodium Acryloyldimethyl Taurate Copolymer, Polyisobutene, Acrylates/C10-30 Alkyl Acrylate Crosspolymer, Milt Extract, Tromethamine, Glyceryl Acrylate/Acrylic Acid Copolymer, PVM/MA Copolymer, Ethylhexylglycerin, Caprylyl Glycol, Fragrance, Melia Azadirachta Leaf Extract, Adenosine, Caprylyl/Capryl Glucoside, Sorbitan Oleate, Melia Azadirachta Flower Extract, Sodium Hyaluronate, Disodium EDTA, Curcuma Longa (Turmeric) Root Extract, Cyanocobalamin, Hydrolyzed Collagen, Ubiquinone, Ocimum Sanctum Leaf Extract, Corallina Officinalis Extract, Palmitoyl Pentapeptide-4, Palmitoyl Tripeptide-1, Palmitoyl Tetrapeptide-7, Copper Tripeptide-1, Acetyl Hexapeptide-8, Salmon Egg Extract, Atelocollagen

Image 8: Detailed list of all ingredients in the serum.

8. PRODUCT SPECIFICATIONS

Specification	Detail
Product Dimensions	4.13 x 1.85 x 1.77 inches
Item Weight	0.14 Kilograms (4.94 ounces)
Item Volume	1.01 Fluid Ounces
Skin Type	All
Item Form	Drop

9. GENERAL CARE & STORAGE

- Store in a cool, dry place away from direct sunlight.
- Ensure the dropper cap is tightly closed after each use to prevent contamination and maintain product efficacy.

- Avoid extreme temperatures.

10. WARRANTY & SUPPORT

For specific warranty information or product support, please refer to the product packaging or contact medicube customer service directly. Details for customer service can typically be found on the brand's official website or on the product's outer packaging.