



Manuals.plus /

› Avisontek /

› Avisontek CMXZDCG440 Wireless Universal Garage Door Opener Keypad Instruction Manual

Avisontek CMXZDCG440

Avisontek CMXZDCG440 Wireless Universal Garage Door Opener Keypad Instruction Manual

1. INTRODUCTION

This manual provides detailed instructions for the installation, operation, and maintenance of your Avisontek CMXZDCG440 Wireless Universal Garage Door Opener Keypad. Please read this manual thoroughly before use to ensure proper function and safety.

2. PRODUCT COMPATIBILITY

The Avisontek CMXZDCG440 keypad is designed for use with specific garage door openers. Please verify your opener's learn button color for compatibility:

- **Compatible with:** Sears Craftsman, LiftMaster, and Chamberlain garage door openers manufactured since 1993, featuring a Purple, Red, Orange, Yellow, or Green learn button.
- **Not compatible with:** Security+ 3.0 White Learn Button openers (produced in 2026), Dip Switch openers, or Craftsman 200.57933, 57943, 57953 Series 100, CR1150, 139.57943, 139.57953 models.

WIDE COMPATIBILITY

Notice: Not sure about compatibility? Feel free to contact us !

The chart is divided into two main sections. The left section, titled 'FOR 3 BRAND', lists 'LIFTMASTER', 'CHAMBERLAIN', and 'SEARS CRAFTSMAN' in white text on a red background. The right section, titled 'FOR 5 LEARN BUTTON', shows five colored boxes representing different learn button types and their manufacturing years: Yellow (2011-Present), Purple (2005-2014), Green (1993-1997), Orange (1997-2005), and Red (1997-2005). Below these sections, a dark grey bar contains icons for incompatible items: a red 'X' in a circle, a battery with a red 'X', a keypad with a red 'X', a dip switch with a red 'X', and a Craftsman Series 100 keypad with a red 'X'. To the right of these icons, the text reads 'NOT WORKS FOR DIP SWITCH and Craftsman Series 100'.

Image: Universal Compatibility Chart. This chart illustrates compatible garage door opener brands (LiftMaster, Chamberlain, Sears Craftsman) and learn button types (Yellow, Purple, Orange, Green, Red) with their corresponding manufacturing years.

3. WHAT'S IN THE BOX

Upon opening your package, you should find the following items:

- Avisontek CMXZDCG440 Wireless Universal Garage Door Opener Keypad
- One 9V Alkaline Battery (pre-installed or included separately)
- User Manual

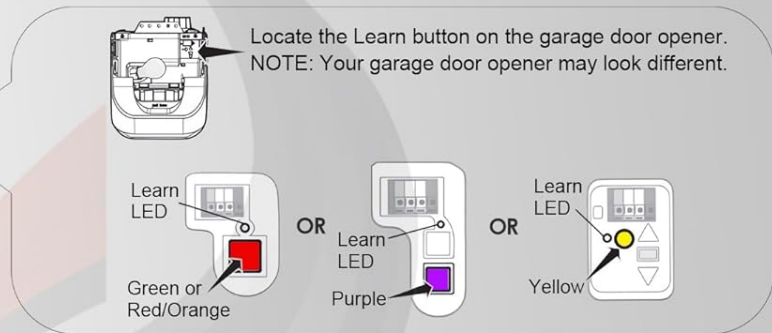
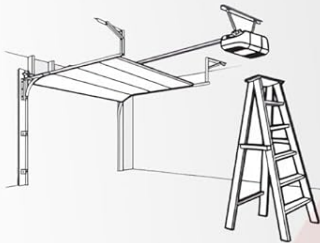
4. SETUP AND INSTALLATION

4.1. Mounting the Keypad

The Avisontek CMXZDCG440 is designed for wireless installation, requiring no complex wiring. Choose a convenient location outside your garage, within range of your garage door opener. Ensure the mounting surface is stable.

SIMPLE TO SET UP AND SYNC

PREPARE



PROGRAM INITIAL PIN

1 Press and hold the * and # buttons simultaneously until the lights on the keypad stop blinking.

2 Enter a 4-digit personal identification number (PIN) of your choice:
 ? ? ? ?
 PIN
 Then press the #button.

3 Press and release the Enter button the number of times that corresponds with the garage door opener type:

# of Presses	Garage Door Opener Type
1	Security+ 2.0™ (Yellow Learn Button)
2	315 MHz Security+® (Purple Learn Button)
3	390 MHz Security+® (Red/Orange Learn Button)
4	390 MHz Billion Code (Green Learn Button)

4 To exit programming mode, press the 0 button.

5 Press and release the Learn button on the garage door opener.
 The Learn LED will light.
 Within 30 seconds

6 Enter the 4-digit personal identification number (PIN) programmed in step 2 then press and release the Enter button until the garage door opener lights flash or two clicks are heard.

7 To test, press the PIN, then press the ENTER button.
 The garage door opener will activate.


 To program the Keyless Entry to more than one garage door opener, repeat the steps above using a new PIN for each additional garage door opener.
 To test operation, enter the PIN then press the ENTER button, the door opener will activate, the keypad will remain for 20 seconds, during this 20 seconds, press the ENTER button, it can be used to stop, start or reverse the door.

Image: Keypad with cover open. This image shows the keypad's internal structure and the mounting holes located on the back panel, visible when the cover is lifted.

4.2. Battery Installation

The keypad operates on one 9V Alkaline battery, which is typically included. To install or replace the battery:

1. Open the keypad cover.
2. Locate the battery compartment.
3. Insert a new 9V Alkaline battery, ensuring correct polarity.
4. Close the battery compartment and keypad cover.



Image: High-Capacity Alkaline Battery. This image highlights the 9V battery compartment within the keypad, emphasizing its long-lasting performance.

4.3. Programming the Keypad

Follow these steps to program your initial personal identification number (PIN) and sync the keypad with your garage door opener:

1. **Prepare:** Locate the Learn button on your garage door opener. The Learn LED will be near it.
2. **Enter Programming Mode:** Press and hold the **3** and **4** buttons simultaneously on the keypad until the lights on the keypad stop blinking.
3. **Set Your PIN:** Enter your desired 4-digit personal identification number (PIN), then press the **#** button.
4. **Select Opener Type:** Press the **ENTER** button the number of times corresponding to your garage door opener's learn button color:
 - 1 time for 315 MHz Security+ (Purple Learn Button)
 - 2 times for 390 MHz Security+ (Red/Orange Learn Button)
 - 3 times for 390 MHz Billion Code (Green Learn Button)
 - 4 times for 310 MHz Security+ 2.0 (Yellow Learn Button)
5. **Exit Programming:** Press the **0** button to exit programming mode.
6. **Sync with Opener:** Press and release the **Learn** button on your garage door opener. The Learn LED will light for 30 seconds.
7. **Finalize Sync:** Within 30 seconds, enter your 4-digit PIN on the keypad, then press and release the **ENTER** button. The garage door opener lights will flash or two clicks will be heard, indicating successful programming.
8. **Test:** Enter your 4-digit PIN, then press **ENTER**. Your garage door should activate.

Video: Programming the Avisontek Universal Keypad. This video demonstrates the step-by-step process of programming the wireless keypad with a Chamberlain garage door opener, including setting a PIN and syncing with the learn button.

5. OPERATING INSTRUCTIONS

5.1. Opening and Closing Your Garage Door

To operate your garage door:

1. Enter your programmed 4-digit PIN.
2. Press the **ENTER** button.

The garage door will activate. If the door is open, it will close; if closed, it will open. The keypad features a night light function for easy visibility in low-light conditions.

5.2. Temporary PIN Function

For guests or temporary access, you can utilize the temporary password function. Refer to the programming section for details on setting up and managing temporary PINs.



Image: Temporary PIN Function and Weatherproof Design. This image illustrates the keypad's ability to set temporary PINs and its robust, weatherproof housing, suitable for various environmental conditions.

6. MAINTENANCE

6.1. Battery Replacement

The keypad is powered by a 9V Alkaline battery. When the keypad lights dim or it becomes unresponsive, it's time to replace the battery. Follow the battery installation steps in Section 4.2.

6.2. Cleaning and Care

The keypad features a weatherproof material shell, designed to withstand various outdoor conditions. To clean, wipe the surface with a soft, damp cloth. Avoid using abrasive cleaners or solvents.

7. TROUBLESHOOTING

If you encounter issues with your Avisontek CMXZDCG440 keypad, refer to the following common problems and solutions:

- **Keypad Not Responding:**
 - Check the battery. Replace if necessary.
 - Ensure you are within the operating range of your garage door opener (up to 164 feet).
- **Programming Difficulties:**
 - Verify your garage door opener's learn button color and frequency for correct programming steps.
 - Ensure you are pressing the **ENTER** button the correct number of times for your opener type.
 - Repeat the programming steps carefully, paying attention to timing (e.g., 30-second window after pressing the learn button).
 - Confirm your opener is compatible (refer to Section 2).
- **Keys Sticking:**
 - Ensure keys are pressed firmly and centrally.
 - Clean around the keys to remove any debris.

If problems persist, please contact customer support.

8. SPECIFICATIONS

Feature	Detail
Model Number	CMXZDCG440
Brand	Avisontek
Power Source	1 x 9V Alkaline Battery (included)
Max Number of Supported Devices	5
Compatible Learn Buttons	Purple, Red, Orange, Yellow, Green (since 1993)
Wireless Range	Up to 164 feet
Frequency	310/315/390 MHz
Security	Rolling Code Encryption (Security 2.0+)
Shell Material	ABS Alloy
Product Dimensions (Keypad)	11.8" x 2.51" x 1.1"
Item Weight	5.6 ounces (0.33 lbs)
Special Features	Night light function, Temporary PIN, Weatherproof



Image: Product Parameters. This graphic provides a summary of the keypad's key specifications, including working range, frequency, battery type, shell material, and dimensions.

9. WARRANTY AND SUPPORT

9.1. Warranty Information

Your Avisontek CMXZDCG440 Wireless Universal Garage Door Opener Keypad comes with a **12-year warranty**, ensuring long-term reliability and peace of mind.

9.2. Customer Support

For any queries, technical assistance, or warranty claims, please contact Avisontek customer support. You can reach us through our store homepage by clicking "Ask a question" or by sending an email to our support team. We aim to respond within 24 hours.

WEATHERPROOF HOUSING

SCORCHIN SUN SNOW RAIN

Weatherproof Material Shell

Image: 24 Hours Amazon Online Tech Support. This image highlights the availability of customer support for any product-related inquiries.

