

[Manuals.plus](#) /

> [cooboom](#) /

> cooboom 40-inch Electric Fireplace (Model EF2030C) User Manual

cooboom EF2030C

cooboom 40-inch Electric Fireplace (Model EF2030C) User Manual

Your guide to safe and efficient operation of your new electric fireplace.

1. INTRODUCTION

This manual provides essential information for the installation, operation, and maintenance of your cooboom 40-inch Electric Fireplace, Model EF2030C. Please read all instructions carefully before installation and use to ensure safe and optimal performance of your appliance.



Image 1.1: The cooboom 40-inch Electric Fireplace, showcasing its flame effect and media bed.

2. SAFETY INSTRUCTIONS

WARNING: To reduce the risk of fire, electric shock, or injury, read all instructions before using this appliance.

- Ensure the fireplace is connected to a properly grounded outlet. Do not use extension cords.
- This electric fireplace is equipped with a CSA safety certificate and an overheating automatic cut-off function for your safety.
- Keep combustible materials such as furniture, bedding, papers, clothes, and curtains at least 3 feet (0.9 m) from the front of the heater.

- Do not block air vents. Ensure proper airflow around the unit.
- Do not insert or allow foreign objects to enter any ventilation or exhaust opening as this may cause an electric shock or fire, or damage the appliance.
- Supervise children and pets when the fireplace is in operation.
- Always unplug the fireplace before cleaning or performing any maintenance.

3. PACKAGE CONTENTS

Verify that all components are present before beginning installation:

- cooboom 40-inch Electric Fireplace Unit
- Remote Control
- Log Set
- Crystal Media
- Installation Tools Kit
- User Manual (this document)

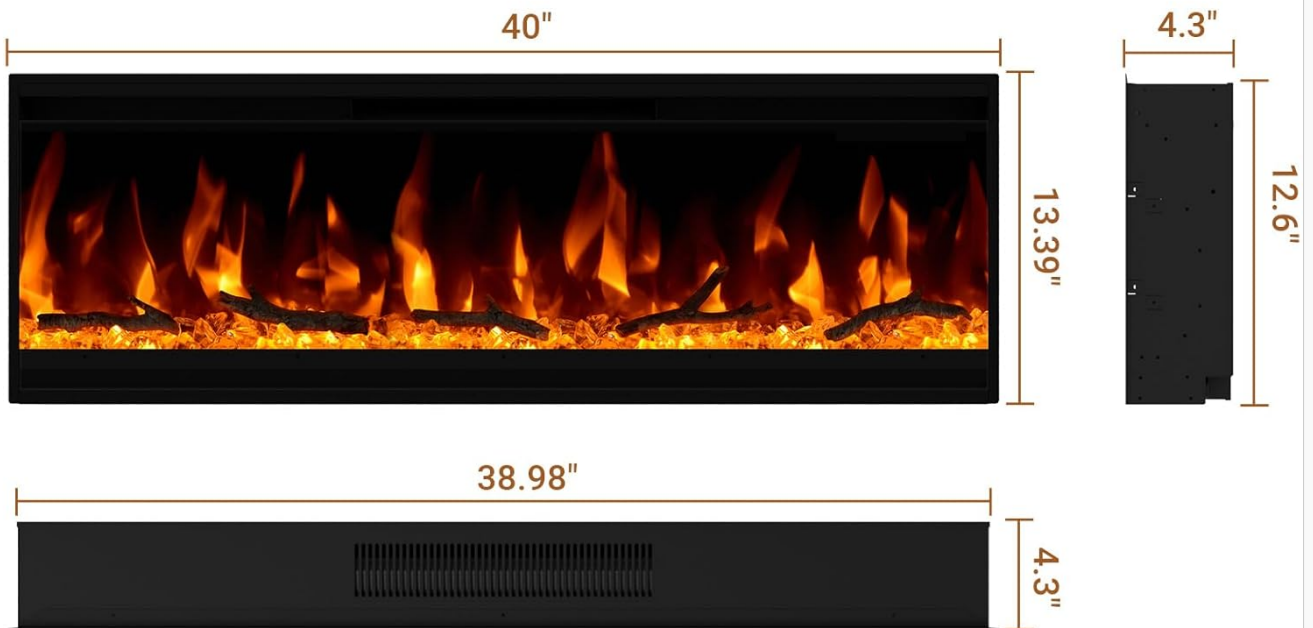
4. SPECIFICATIONS

Feature	Description
Brand	cooboom
Model Name	EF2030C
Product Dimensions	4.3"D x 40"W x 13.39"H
Power Source	Corded Electric
Heat Output	1500 Watts (also 750W mode)
Heating Coverage	Up to 400 sq ft
Installation Type	Wall Mount, Recessed
Special Feature	Ultra-thin (4.3 inches)
Color	Black
Item Weight	32.9 pounds
Ventilation Type	Vent Free
Safety Certification	CSA Approved

5. INSTALLATION

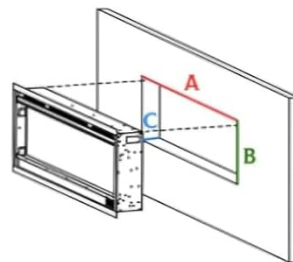
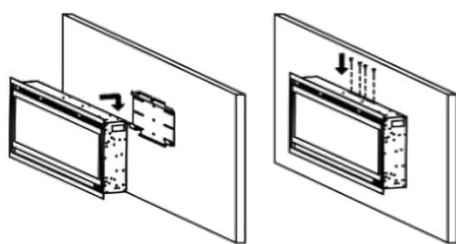
The cooboom electric fireplace can be installed as a wall-mounted unit or recessed into a wall. Refer to the included installation tools kit and instructions for detailed steps. Always ensure the power is disconnected before installation.

DIMENSIONS



(Wall Mounted)

(Recessed)



Opening Dimension

A:39.57"

B:13.27"

C:5-1/4"

Image 5.1: Installation diagrams for wall-mounted and recessed setups. Note the opening dimensions for recessed installation: A: 39.57", B: 13.27", C: 5-1/4".

5.1 Wall-Mounted Installation

1. Choose a suitable location on a wall, ensuring it is away from curtains, furniture, and high-traffic areas.
2. Mark the desired height and position for the mounting bracket.
3. Securely attach the mounting bracket to the wall studs using appropriate hardware.
4. Carefully lift the fireplace unit and hook it onto the wall mounting bracket.
5. Ensure the unit is level and securely fastened.

5.2 Recessed Installation

1. Prepare a wall opening with the following dimensions: 39.57 inches (width) x 13.27 inches (height) x 5.25 inches (depth).
2. Ensure there is adequate clearance around the opening for ventilation and electrical connections.
3. Insert the fireplace unit into the prepared opening.
4. Secure the unit to the wall studs using the provided screws and brackets.
5. Ensure the unit is flush with the wall surface and securely installed.

6. OPERATION

Your cooboom electric fireplace can be operated using the touch screen control panel on the unit or the included remote control.

FUNCTIONS

(Remote Control)



(Control Panel)

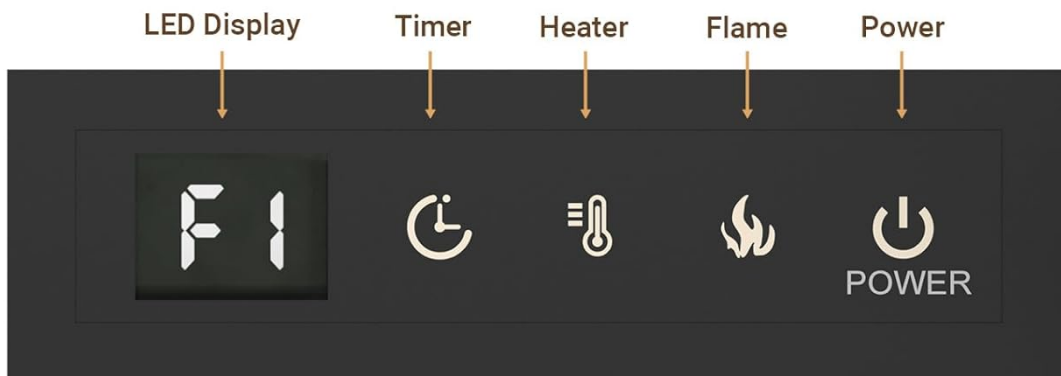


Image 6.1: Overview of the remote control and the fireplace's control panel functions.

6.1 Control Panel

The control panel is located on the unit and features the following buttons:

- **Power:** Turns the fireplace ON or OFF.
- **Flame:** Cycles through flame color and brightness options.
- **Heater:** Activates or deactivates the heating function and adjusts temperature.
- **Timer:** Sets the automatic shut-off timer.
- **LED Display:** Shows current settings (e.g., flame color, temperature, timer).

6.2 Remote Control

The remote control provides convenient access to all functions:

- **Power ON/OFF:** Turns the fireplace on or off.
- **Heat Control:** Cycles through High, Low, and OFF heating modes.
- **Increase/Reduce Temp. Setting:** Adjusts the thermostat from 62°F to 82°F.
- **Flame Color Control:** Selects from 4 flame color modes: F1 (Orange), F2 (Blue), F3 (Mix of colors), F4 (Circulate through colors).
- **Flame Brightness:** Adjusts flame intensity: L1 (Brightest), L2 (Brighter), L3 (Medium), L4 (Minimum).
- **Timer:** Sets the automatic shut-off timer from 30 minutes to 9 hours.

6.3 Heating Functions

- The heater offers 1500W or 750W settings for efficient warming or energy saving.
- The thermostat can be adjusted between 62°F and 82°F.
- The supplemental zone heating can cover up to 400 square feet.

6.4 Flame Effects

- The fireplace features 4 flame colors and 4 brightness options.
- The flame effect can operate independently of the heating function, allowing for ambiance year-round.

Your browser does not support the video tag.

Video 6.2: A demonstration of the ultra-thin electric fireplace, showcasing its various flame color modes (Red, Blue, Two colors, Circulate) and overall aesthetic in different room settings.

7. MAINTENANCE

Regular maintenance ensures the longevity and optimal performance of your electric fireplace.

- **Cleaning:** Ensure the unit is turned off and unplugged before cleaning. Use a soft, damp cloth to wipe the exterior surfaces. Do not use abrasive cleaners or sprays.
- **Air Vents:** Periodically check and clean the air intake and exhaust vents to prevent dust buildup, which can impede airflow and heating efficiency.
- **Storage:** If storing the fireplace for an extended period, unplug it and store it in a dry, dust-free location.
- There are no user-serviceable parts inside the unit. Do not attempt to open or repair the fireplace yourself.

8. TROUBLESHOOTING

If you encounter issues with your fireplace, refer to the following common problems and solutions:

Problem	Possible Cause	Solution
Fireplace does not turn on.	No power to the unit.	Check if the power cord is securely plugged into a grounded outlet. Verify the circuit breaker is not tripped.
No heat output.	Heater function is off or thermostat is set too low.	Ensure the heater function is activated via the control panel or remote. Increase the thermostat setting.

Flames are not visible or flickering incorrectly.	Flame effect is off or brightness is set to minimum.	Activate the flame function and adjust brightness settings using the control panel or remote.
Remote control is not working.	Dead battery or obstruction.	Replace the remote control battery. Ensure there are no obstructions between the remote and the fireplace sensor.

9. WARRANTY AND SUPPORT

cooboom offers a worry-free warranty for this product. For any questions, technical assistance, or warranty claims, please contact our customer service. We are committed to providing 24-hour customer support.

For support, please visit our official website or contact us via the details provided with your purchase documentation.