

## Lifelong LLWLDM001

# Lifelong 12V Cordless Drill Machine

Model: LLWLDM001 - User Manual

## 1. INTRODUCTION

Thank you for choosing the Lifelong 12V Cordless Drill Machine. This manual provides essential information for the safe and efficient operation, maintenance, and troubleshooting of your new tool. Please read these instructions carefully before first use and keep them for future reference.

This cordless drill is designed for various tasks including drilling into wood, metal, and PVC, as well as driving screws. Its compact design and 12V Lithium-Ion battery offer convenience and portability for home use and DIY projects.

## 2. SAFETY INSTRUCTIONS

Always follow basic safety precautions to reduce the risk of fire, electric shock, and personal injury.

- **Work Area Safety:** Keep your work area clean and well-lit. Cluttered or dark areas invite accidents. Do not operate power tools in explosive atmospheres, such as in the presence of flammable liquids, gases, or dust.
- **Electrical Safety:** Avoid body contact with earthed or grounded surfaces such as pipes, radiators, ranges, and refrigerators. There is an increased risk of electric shock if your body is earthed or grounded.
- **Personal Safety:** Always wear eye protection. Use safety glasses, goggles, or a face shield. Wear hearing protection when operating the tool for extended periods. Dress properly; do not wear loose clothing or jewelry. Keep hair, clothing, and gloves away from moving parts.
- **Tool Use and Care:** Do not force the power tool. Use the correct power tool for your application. Disconnect the plug from the power source and/or the battery pack from the power tool before making any adjustments, changing accessories, or storing power tools.
- **Battery Pack Use and Care:** Recharge only with the charger specified by the manufacturer. Do not use battery packs or tools that are damaged or modified.

### 3. PRODUCT OVERVIEW

Familiarize yourself with the components of your Lifelong 12V Cordless Drill Machine.



**Image 3.1:** Labeled components of the Lifelong 12V Cordless Drill Machine. Key parts include the 10mm keyless chuck, 25 clutch setting ring, two variable speed switch (0-450/0-1450 RPM), battery level indicator, power switch, reverse switch, ergonomic handle, and 12V Lithium-Ion battery.

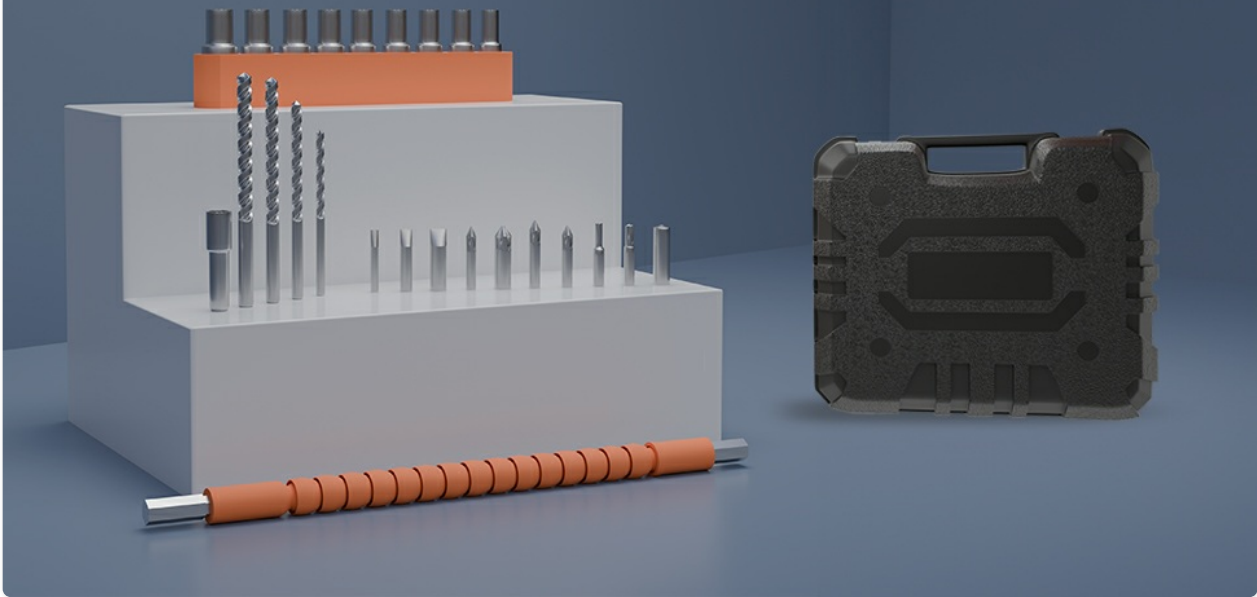
- **10mm Keyless Chuck:** Allows for quick and easy bit changes without a key.
- **Clutch Setting Ring:** Adjusts the torque settings (25 settings) to prevent over-driving screws or damaging materials.
- **Variable Speed Switch:** Controls the rotation speed of the drill.
- **Battery Level Indicator:** Displays the remaining battery charge.
- **Power Switch:** Activates the drill.
- **Reverse Switch:** Changes the direction of rotation for removing screws or backing out drill bits.
- **Ergonomic Handle:** Provides a comfortable and secure grip.
- **12V Lithium-Ion Battery:** Provides cordless power to the tool.

### 4. SETUP

#### 4.1. Charging the Battery

Before first use, fully charge the battery for optimal performance. The battery level indicator will show the charging status.

## Complete Tool Kit with Versatile Accessories Everything You Need for Any Project in One Set!



**Image 4.1:** Illustration of the cordless drill highlighting its long-lasting 1500 mAh rechargeable battery. The battery requires 3-4 hours charging time for up to 20 minutes run time.

1. Connect the charger to a power outlet.
2. Insert the battery pack into the charger.
3. Allow the battery to charge completely. The battery level indicator will show full charge.
4. Disconnect the charger once charging is complete.

### 4.2. Installing and Removing Drill Bits

The drill features a 10mm keyless chuck for easy bit changes.

1. **To Install:** Rotate the chuck counter-clockwise until the jaws are open wide enough to insert the drill bit. Insert the bit fully and then rotate the chuck clockwise to tighten it securely.
2. **To Remove:** Rotate the chuck counter-clockwise until the jaws release the drill bit.

## 5. OPERATING INSTRUCTIONS

### 5.1. Powering On/Off and Direction Control

- **Power On:** Press the power switch to start the drill. The speed is variable depending on how much you press the switch.
- **Power Off:** Release the power switch.
- **Forward/Reverse:** Use the reverse switch located above the power switch to select the rotation direction. Push it left for forward rotation (drilling/driving) and right for reverse rotation (removing screws). Ensure the switch is in the center position to lock the trigger and prevent accidental starting.

### 5.2. Speed Settings

The drill offers two speed settings for different applications.

- **Low Speed (0-450 RPM):** Ideal for driving screws, larger drilling diameters, or applications requiring

higher torque and more control.

- **High Speed (0-1450 RPM):** Suitable for smaller drilling diameters and tasks requiring faster rotation.

### 5.3. Torque (Clutch) Settings

The 25 clutch settings allow you to adjust the torque output, preventing over-driving screws or damaging delicate materials.



**Image 5.1:** High Speed, Low Torque setting, suitable for lighter jobs like drilling into drywall or assembling furniture with softer materials.



**Image 5.2:** Low Speed, High Torque setting, ideal for tougher DIY tasks such as drilling or driving screws into dense wood or metal surfaces.

Rotate the clutch setting ring to select the desired torque. Higher numbers indicate higher torque. For drilling, set the ring to the drill icon for maximum torque.

### 5.4. Using the Built-in LED Light

The built-in LED light illuminates the work area, providing better visibility in dark or confined spaces. The light activates automatically when the power switch is pressed.



**Image 5.3:** The built-in LED light illuminates the work area for enhanced visibility, especially in dark spaces.

## 5.5. Drilling Techniques

This drill is suitable for drilling into wood, metal, and PVC.



**Image 5.4:** The cordless drill in various applications, demonstrating its versatility for drilling and driving screws in different materials and scenarios.

- **Wood:** Use wood-specific drill bits. Start with a pilot hole for larger screws or to prevent splitting.
- **Metal:** Use metal-specific drill bits. Apply light pressure and use a slower speed to prevent overheating the bit. Use cutting oil for harder metals.

- **PVC:** Use standard drill bits. Apply steady, light pressure to avoid cracking the material.
- Always secure the workpiece to prevent movement during drilling.

## 6. MAINTENANCE

### 6.1. Cleaning

- Keep the ventilation openings of the tool clean to prevent overheating.
- Use a soft, damp cloth to clean the exterior of the tool. Do not use harsh chemicals or abrasive cleaners.
- Regularly remove dust and debris from the chuck area.

### 6.2. Battery Care

- Do not store the battery in direct sunlight or in areas with high temperatures.
- For long-term storage, charge the battery to approximately 50% and store it in a cool, dry place.
- Avoid fully discharging the battery frequently, as this can reduce its lifespan.

### 6.3. Storage

When not in use, store the drill machine and its accessories in a dry, secure place, out of reach of children.

## 7. TROUBLESHOOTING

Problem	Possible Cause	Solution
Drill does not start	Battery is not charged or not properly inserted. Reverse switch is in the center (locked) position.	Charge the battery and ensure it is securely inserted. Move the reverse switch to the forward or reverse position.
Loss of power during operation	Battery is low. Overload due to excessive pressure or incorrect speed/torque setting.	Recharge the battery. Reduce pressure, select a lower speed, or adjust the torque setting.
Bit wobbles or falls out	Chuck is not tightened properly. Bit shank is damaged.	Ensure the chuck is tightened securely. Replace damaged drill bits.
Overheating	Continuous heavy use. Blocked ventilation slots.	Allow the tool to cool down. Clear any obstructions from the ventilation slots.

## 8. SPECIFICATIONS

Feature	Specification
Brand	Lifelong
Model Number	LLWLDM001
Power Source	Cordless Electric
Voltage	12 Volts

Feature	Specification
Battery Capacity	1500 mAh
Maximum Rotational Speed	1450 RPM
No Load Speed	0-450 RPM (Low), 0-1450 RPM (High)
Maximum Chuck Size	10 Millimeters
Maximum Torque	28 Newton Meters
Number of Speed Settings	2
Clutch Settings	25
Special Feature	Cordless, Built-in LED Light
Product Dimensions (L x W x H)	16L x 6W x 19H Centimeters
Item Weight	1560 Grams
Material Type	Metal with Rubber Grip

## 9. WARRANTY INFORMATION

---

This product comes with a standard manufacturer's warranty. Please refer to the warranty card included with your purchase for specific terms, conditions, and duration. Keep your purchase receipt as proof of purchase for any warranty claims.

## 10. CUSTOMER SUPPORT

---

For any queries, assistance, or service requests regarding your Lifelong 12V Cordless Drill Machine, please contact Lifelong customer support.

- **Manufacturer:** Lifelong Online Retail Private Limited
- **Address:** 5th Floor, Unit No. 508, DLF, South Court, Saket District Center, Saket, New Delhi, India-110017
- Please visit the official Lifelong website or refer to the contact information provided on the product packaging for the most up-to-date support details.