

Hannspree SN10HR1B

HannsNote 2 SN10HR1B User Manual

Model: SN10HR1B | Brand: Hannspree

1. INTRODUCTION

This user manual provides comprehensive instructions for the operation, maintenance, and troubleshooting of your Hannspree HannsNote 2 SN10HR1B tablet. Please read this manual thoroughly before using the device to ensure proper functionality and to prevent damage.

The HannsNote 2 is designed for an optimal reading and note-taking experience, particularly in bright environments, featuring a unique Paper-Like Display technology.

2. SAFETY INFORMATION

To ensure safe operation and prolong the life of your device, please observe the following safety precautions:

- Environmental Conditions:** Use the device within recommended temperature and humidity ranges. Avoid extreme heat, cold, direct sunlight for prolonged periods, and high humidity.
- Water and Moisture:** Keep the device away from water, rain, and other liquids. Do not operate with wet hands.
- Cleaning:** Disconnect the device from power before cleaning. Use a soft, dry cloth. Do not use liquid cleaners or aerosols.
- Power Source:** Use only the charger and cables specified by the manufacturer. Incorrect power sources can damage the device and void the warranty.
- Battery Safety:** The device contains a Lithium Ion battery. Do not attempt to replace the battery yourself. Do not expose the battery to high temperatures or dispose of it in fire.
- Handling:** Handle the device with care. Avoid dropping or subjecting it to strong impacts. The screen is designed for outdoor visibility but is not indestructible.
- Repairs:** Do not attempt to disassemble or repair the device yourself. Refer all servicing to qualified service personnel.

3. WHAT'S IN THE BOX

Upon opening the package, verify that all items listed below are present and in good condition:

- Hannspree HannsNote 2 SN10HR1B Tablet
- Pencil (Stylus)

- USB Type-C Cable
- Quick Start Guide (if applicable)



Figure 3.1: HannsNote 2 tablet and included accessories in its retail packaging.

4. PRODUCT OVERVIEW

4.1. Device Layout



Figure 4.1: Front view of the HannsNote 2 tablet with its protective cover.

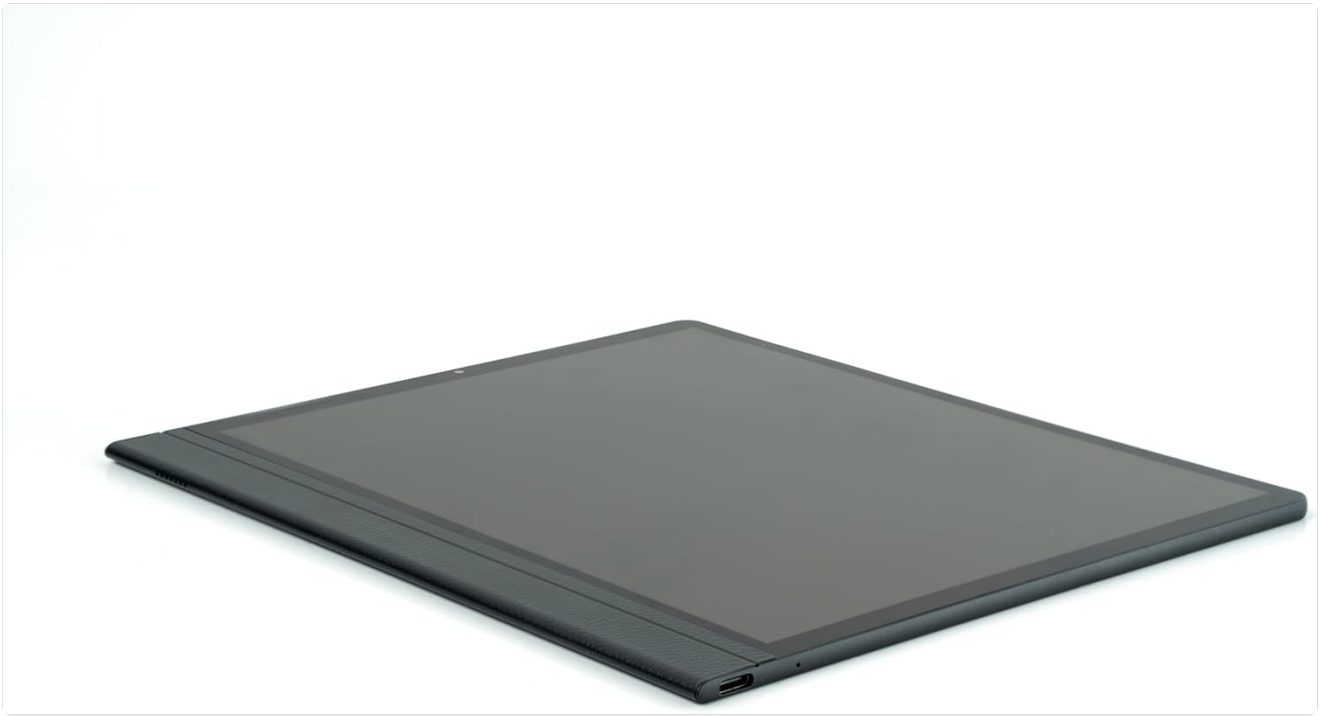


Figure 4.2: Side profile of the HannsNote 2 tablet, highlighting its slim design.



Figure 4.3: A hand holding the HannsNote 2 tablet, demonstrating its remarkably thin profile.

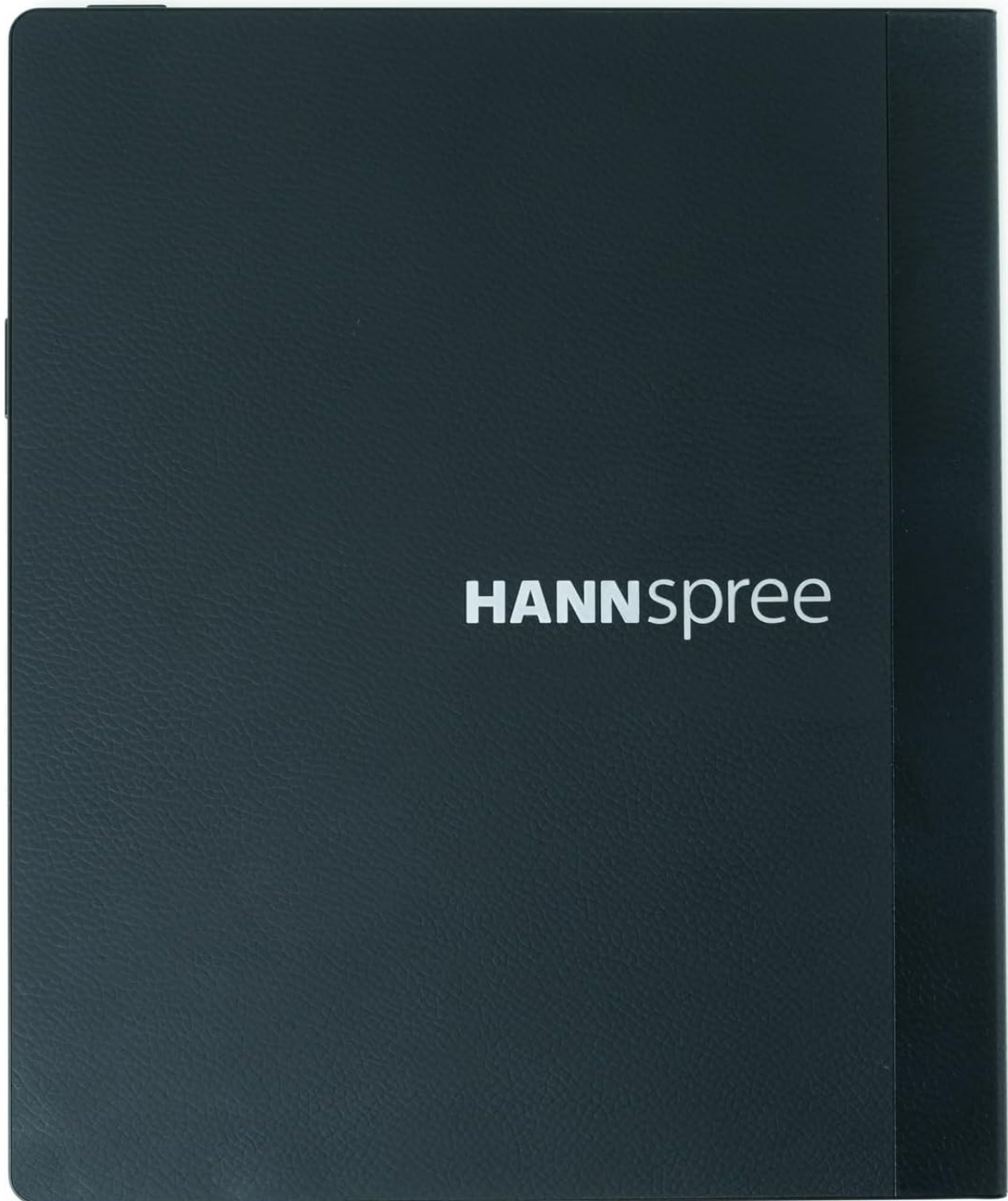


Figure 4.4: Rear view of the HannsNote 2 tablet, showing the Hannspree logo.

4.2. Key Components

- **Paper-Like Display:** The 10-inch RLCD screen offers a unique viewing experience, designed for clarity in bright ambient light without a backlight, reducing eye strain.
- **Front Camera:** Located at the top of the screen, used for video calls and basic photography.
- **Power Button:** Typically located on the side or top edge, used to power on/off the device or put it to sleep.
- **Volume Buttons:** Adjust the audio output level.
- **USB Type-C Port:** Used for charging the device and connecting to a computer for data transfer.
- **Speakers:** Provide audio output.
- **Microphone:** For audio input during calls or recordings.

5. SETUP

5.1. Initial Charging

Before first use, it is recommended to fully charge your HannsNote 2 tablet. Connect the provided USB Type-C cable to the tablet's charging port and the other end to a compatible USB power adapter (not always included) or a computer's USB port.

- A charging indicator (usually an LED light or on-screen icon) will show the charging status.
- Allow several hours for a full charge.

5.2. Powering On/Off

- **To Power On:** Press and hold the Power button until the Hannspree logo appears on the screen.
- **To Power Off:** Press and hold the Power button until a power options menu appears. Select "Power Off" and confirm.
- **To Sleep/Wake:** Briefly press the Power button to put the device into sleep mode or wake it up.

5.3. Initial Setup Wizard

Upon first power-on, the device will guide you through an initial setup wizard. Follow the on-screen prompts to configure:

- Language selection
- Wi-Fi network connection
- Date and time settings
- Google account sign-in (optional, but recommended for app access)

5.4. Connecting to Wi-Fi

1. Go to **Settings > Network & internet > Wi-Fi**.
2. Toggle Wi-Fi to **On**.
3. Select your desired Wi-Fi network from the list.
4. Enter the network password if prompted and tap **Connect**.

6. OPERATING THE HANNSNOTE 2

6.1. Navigating the Interface

The HannsNote 2 runs on Android 13. Navigation is primarily touch-based:

- **Tap:** Select an item or open an application.
- **Swipe:** Scroll through pages, menus, or home screens.
- **Pinch-to-Zoom:** Use two fingers to zoom in or out on images, web pages, or documents.
- **Long Press:** Access contextual menus or move icons.

6.2. Using the Stylus (Pencil)

The HannsNote 2 supports advanced stylus input, ideal for note-taking, drawing, and precise navigation. Ensure your stylus is compatible (e.g., US1 2.0 standard).

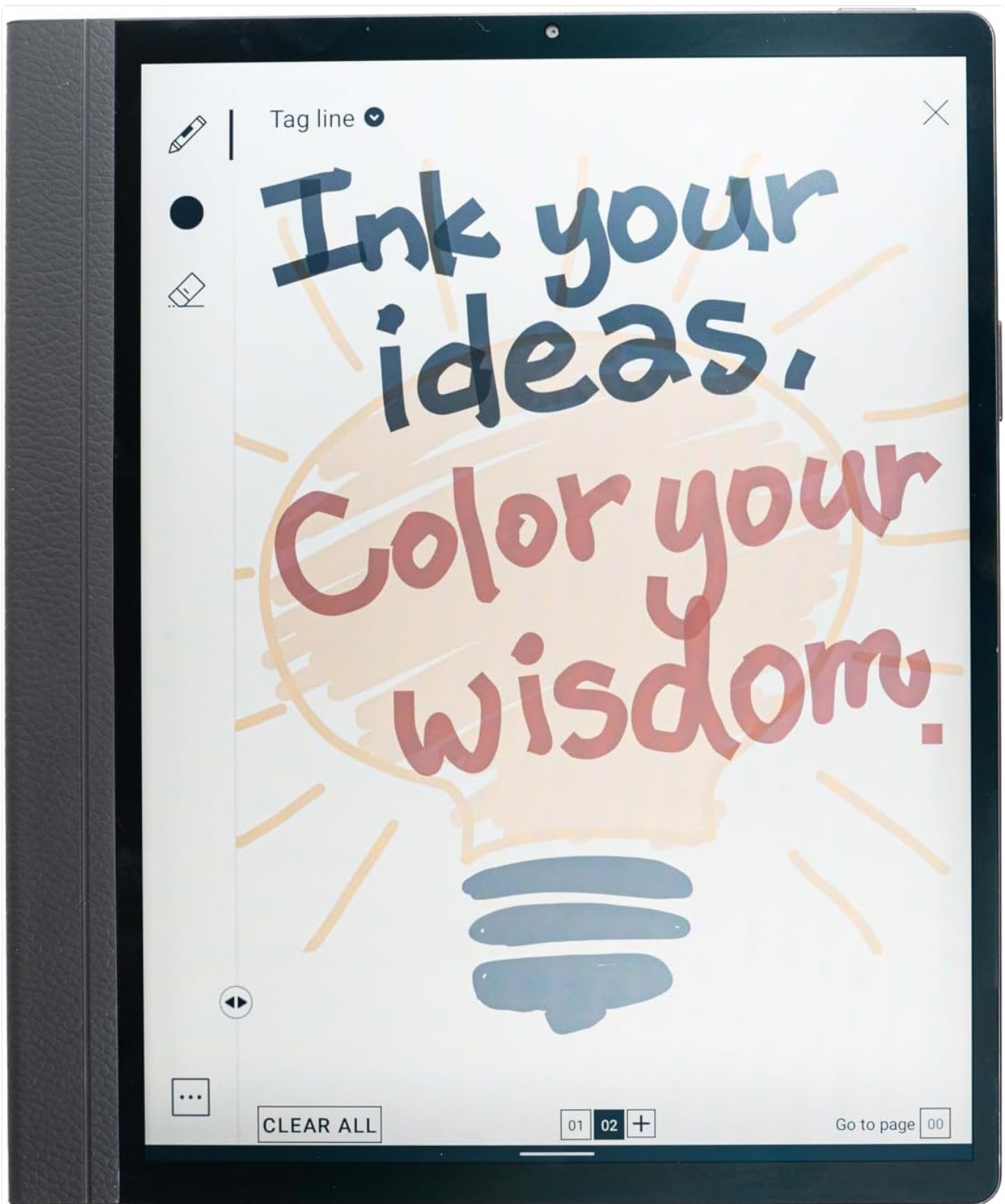


Figure 6.1: The HannsNote 2 display demonstrating its note-taking capabilities with a stylus.

- **Writing/Drawing:** Use the stylus directly on the screen in compatible applications (e.g., note-taking apps, drawing apps).
- **Precision Selection:** Use the stylus for more accurate tapping and selection than finger input.

6.3. Optimizing Display for Environment

The Paper-Like Display performs best in environments with sufficient ambient light. It does not have a backlight like traditional LCDs.

- **Outdoor Use:** The screen is highly visible in natural sunlight, making it ideal for outdoor reading and work.
- **Indoor Use:** For indoor use, ensure adequate room lighting. Position the tablet to utilize ambient light

effectively, such as near a window or under a well-lit area. Avoid using in dimly lit or dark rooms as the screen will appear very dark.



Figure 6.2: The HannsNote 2 tablet being used outdoors, demonstrating its excellent visibility in bright conditions.



Figure 6.3: The HannsNote 2 tablet being used indoors, suitable for well-lit environments.

7. MAINTENANCE

7.1. Cleaning the Device

- Ensure the device is powered off and disconnected from any power source.
- Use a soft, lint-free cloth (e.g., microfiber cloth) to gently wipe the screen and body.
- For stubborn smudges, slightly dampen the cloth with water. Avoid excessive moisture.
- Do not use harsh chemicals, abrasive cleaners, or solvents.

7.2. Battery Care

- Avoid completely draining the battery frequently.
- Do not leave the device uncharged for extended periods.
- Store the device in a cool, dry place if not used for a long time, with the battery charged to about 50%.

7.3. Software Updates

Periodically check for system updates to ensure optimal performance and security. Go to **Settings > System > System update**.

8. TROUBLESHOOTING

Problem	Possible Cause	Solution
Device does not power on.	Battery is drained.	Connect the charger and allow it to charge for at least 30 minutes before attempting to power on.
Screen is too dark indoors.	Insufficient ambient light.	The Paper-Like Display requires external light. Use in well-lit rooms or outdoors. Adjust your position relative to light sources.
Wi-Fi connection is weak or unstable.	Distance from router, interference.	Move closer to the Wi-Fi router. Ensure no large obstructions are between the device and the router. Restart the router.
Stylus not responding.	Incompatible stylus, app issue.	Ensure you are using a compatible USI 2.0 stylus. Restart the application or the tablet.
Device is slow or unresponsive.	Too many apps running, low memory.	Close unnecessary applications. Restart the device. Clear cache from apps if needed.

9. SPECIFICATIONS

Feature	Detail
Brand	Hannspree
Model Name	HannsNote2
Item Model Number	SN10HR1B

Feature	Detail
Product Dimensions	12 x 8.84 x 1.28 cm
Item Weight	350 g
Screen Size	10 Inches
Screen Resolution	1920 x 1200 pixels (1200x1600 display resolution maximum)
Processor Speed	1.8 GHz
RAM Memory Installed Size	2 GB
Memory Storage Capacity	4 GB
Operating System	Android 13
Connectivity Type	Bluetooth, 802.11n (Wi-Fi)
Front Webcam Resolution	0.3 MP
Average Battery Life	4.5 Hours
Battery Type	1 Lithium Ion battery (8.36 Watt Hours, 43.1 g)
Colour	Black



Figure 9.1: TÜV Rheinland certification for Paper-Like Display.

10. WARRANTY AND SUPPORT

10.1. Warranty Information

Hannspree products are covered by a limited warranty. Please refer to the warranty card included with your product or visit the official Hannspree website for detailed warranty terms and conditions specific to your region.

10.2. Customer Support

If you encounter issues not covered in the troubleshooting section or require further assistance, please contact Hannspree customer support:

- **Online Support:** Visit the official Hannspree website for FAQs, driver downloads, and support contact forms.
- **Contact Information:** Refer to the contact details provided on the Hannspree website or in your product's documentation for phone or email support.

When contacting support, please have your product model number (SN10HR1B) and serial number ready.

Documents - Hannspree – SN10HR1B

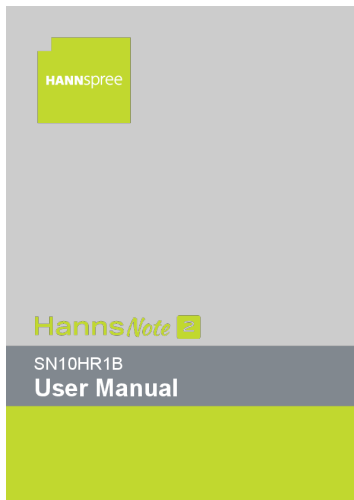


[\[pdf\]](#) Specifications Datasheet

Hannspree Datasheet EN 20240806 Data Sheet HannsNote2 Eco Friendly Ultra Thin E Reader

HANNspree SN10HR1B storage googleapis hannspree |||

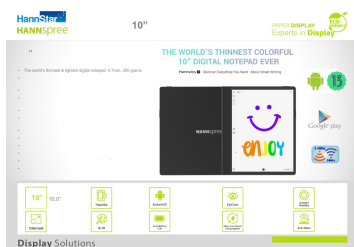
10 FEATURING A DYNAMIC, FULL COLOUR PAPERLIKE DISPLAY ECO FRIENDLY 2.4 Ghz 5 Ghz Features The ... e CR 10 Contrast Typical Brightness Pixel Pitch Cover Glass Surface Treatment 10 HannsNote2 / **SN10HR1B** 25.4 cm / 10.0 Inch 1200 x 1600 194 PPI , 3:4 Aspect Ratio ecoVISION Paper Display TN, Ref... lang:en score:36 filesize: 885.74 K page_count: 3 document date: 2024-08-06



[HannsNote2 SN10HR1B User Manual - HANNspree](#)

Comprehensive user manual for the HANNspree HannsNote2 (SN10HR1B) tablet. Learn about product overview, initial setup, Android interface, note-taking features, specifications, and safety guidelines.

lang:en score:34 filesize: 5.84 M page_count: 25 document date: 2024-05-21



[\[pdf\]](#) Specifications Datasheet Borchure


PowerPoint Presentation Vicente Bernardo Ferrer Conejero Hannspree HannsNote2 e book reader

Touchscreen 64 GB Wi Fi Black Product Brochure Datasheet 0 8 MB SN10HR1B mmo 120890679 1717770185 8859 26440 objects icecat biz |||

10 HannsNote 2 Pad 10 HannsNote 2 Pad P/N: **SN10HR1B** The world s thinnest lightest digital notepad: 4.7mm, 350 grams HannStar Argentum Birefringence Eco-Friendly Paper Display Technology Sunlight Readable, Anti-Glare Eye-Friendly Eye Care : Zero blue light emission. Ensure you to read under...

lang:en score:33 filesize: 779.13 K page_count: 3 document date: 2024-01-17

THERACON




Allgemein	
Bildschirmdiagonale	25,4 cm
Technologie	ewiVISION Paper TN
Display-Auflösung	1600 x 1200 Pixel
Unterstützte Dokumentenformate	CHM, EPUB, HTML, PDB, PDF, PRC, RTX, TXT
Unterstützte Bildformate	BMP, JPEG, PNG, TIFF
Interne Speicherkapazität	64 GB
Speichermedien Typ	eMMC
RAM-Kapazität	4000 MB
Prozessor	Rockchip RK5568
Prozessorklockfrequenz	1500 MHz
USB-Stecker	USB Typ-C
Schnittstelle	USB 2.0
WLAN	Ja
WLAN-Standards	802.11a, 802.11b, 802.11g, Wi-Fi 4 (802.11n), Wi-Fi 5 (802.11ac)

[pdf] Datasheet

Datenblatt Hannspree HANNSNOTE 2 SN10HR1B E Reader 25 4cm 11 ore fa — Unterstützte Bildformate BMP JPG PNG TIFF Interne Speicherkapazität 64 GB Speichermedien Typ eMMC RAM Kapazität 4000 MB Prozessor datasheet asset conrad media10 add 160267 c1 de 916004577DS00 ||| Hannspree HANNSNOTE 2 **SN10HR1B** EReader 25,4cm/10 Android 13 - E-BookReader Gruppe Hersteller Hersteller Art. Nr. EAN/UPC Hauptmerkmale Bildschirmdiagonale Technologie Display-Auflösung Unterstützte Dokumentenformate Unterstützte Bildformate Interne Speicherkapazitt Speichermedien Typ RAM-Kapazitt Pro...

lang:en score:31 filesize: 132.45 K page_count: 1 document date: 2025-03-22



HannsNote 

SN10HR1B
User Manual

[pdf] User Manual Declaration of Conformity

SN10HR1B UM EN Final 1 Dan 0715 v3 Elite Translation Co Ltd Administrator Bedienungsanleitung HANNSpree 10 HannsNote 2 Pad ab € 312 96 2024 Preisvergleich Geizhals Österreich 164fec60eee4113d6f4e5a9c9ac173f42725 gzhls at blob ldb a 3 6 9 ||| **SN10HR1B** User Manual English Contents Precautions 3 Special Notes lang:en score:29 filesize: 5.48 M page_count: 25 document date: 2024-08-05

[pdf] User Manual Quick Start Guide Instructions Guide Warranty Accessories

20240129 note2 EN Hannspree HannsNote2 e book reader Touchscreen 64 GB Wi Fi Black Quick Guide 2 1 MB SN10HR1B mmo 120890679 1717770170 9923 15813 objects icecat biz ||| Instruction Manual Warranty Information Packing Contents HannsNote2 1 pc USB-C Charger Cable 1 pc Quick Guide 1 pc Getting Started Turn On: Press the power button for 3 seconds. Turn off: Press the power button and the volume button at the same time. Tap Power off to turn the device of... lang:en score:29 filesize: 2.14 M page_count: 9 document date: 2024-05-16



[pdf] Datasheet

Hannspree Datasheet EN Simone Renso 20240827173235 3v7r5r4l94 hannspree eu uploadfiles 202408

|||

10 THE THINNEST COLORFUL 10 DIGITAL NOTEPAD EVER Discover Everything You Need About Smart Writin ... alla luce del sole Eye Care Anti Riflesso Specifiche

Tecniche Nome / Codice 10 HannsNote2 / **SN10HR1B** Dimensione Schermo

Risoluzione H x V 25.4 cm / 10.0 Pollici 1200 x 1600 194 PPI , 3:4 ...

lang:it **score:28** filesize: 1.03 M page_count: 3 document date: 2024-08-06



[pdf]

Datenblatt DE HANNSNOTE 2 Lecteur de tablettes livres électroniques 10 4 Go 64 Andr acheter chez reichelt HANNSPREE HNNSNOTE2 DB cdn documents datenblatt I200 |||

A Group Company of 10 HannsNote 2 10 HannsNote 2 P/N: **SN10HR1B** Gewinner des iF Design Award 2024 Der weltweit dnnste und leichteste digitale Farb-Notepad: 4,9 mm und 350 gramm HannStar Argentum Birefringence umweltfreundliche DisplayTechnologie Sonnenlichtlesbar, blendfrei Augenfreundlich ...

lang:de **score:27** filesize: 739.53 K page_count: 4 document date: 2024-05-20



[pdf]

Certification HannsNote2 Eco Friendly Ultra Thin E Reader HANNSpree TUV SN10HR1B storage googleapis hannspree |||

Zertifikat Certificate Zertifikatsnummer Certificate No.: Q 50605529 0001 Produkt

Product: Display Unit Tablet Reader Modell Type: Bezeichnung Designation:

HSD0001 Hannspree Berichtsnummer Report No.: CN235JUX 001 Seite Page 2 / 2 ...

lang:de **score:23** filesize: 3.59 M page_count: 2 document date: 2024-02-26



[pdf] Specifications

mno 120890679 1727079755 2615 3467180 assets media quzo co uk 2024 10 25 |||

10 FEATURING A DYNAMIC, FULL COLOUR PAPERLIKE DISPLAY ECO

FRIENDLY 2.4 Ghz 5 Ghz Features The ... e CR 10 Contrast Typical Brightness Pixel

Pitch Cover Glass Surface Treatment 10 HannsNote2 / **SN10HR1B** 25.4 cm / 10.0

Inch 1200 x 1600 194 PPI , 3:4 Aspect Ratio ecoVISION Paper Display TN, Ref...

lang:en **score:21** filesize: 837.46 K page_count: 3 document date: 2024-10-25

[Hannspree HannsNote2: Eco-friendly Natural Illumination Reader User Manual and Warranty Information](#)



Comprehensive instruction manual and warranty details for the Hannspree HannsNote2, an eco-friendly natural illumination e-reader tablet featuring a 10-inch display, 4GB+64GB storage, and Bluetooth 5.0.

lang:en score:20 filesize: 2.07 M page_count: 9 document date: 2024-08-06



[\[pdf\] User Manual Declaration of Conformity](#)

mno 120890679 1727178912 5056 1239304 assets media quzo co uk 2024 10 25 |||

SN10HR1B User Manual English Contents Precautions

.....	3
Notes	

lang:en score:19 filesize: 2.76 M page_count: 25 document date: 2024-10-25



[HANNspree ecoVISION Paper Display: Outdoor Digital Signage Solutions](#)

Explore HANNspree's ecoVISION Paper Display technology, offering superior sunlight readability, energy efficiency, and all-weather durability for outdoor digital signage, monitors, and e-readers. Learn about the benefits and specifications of various ecoVISION models.

lang:en score:14 filesize: 10.28 M page_count: 16 document date: 2024-09-26