

Vgate vLinker MS Bluetooth

Vgate vLinker MS Bluetooth OBD2 Scanner User Manual

Model: **vLinker MS Bluetooth** | Brand: **Vgate**

INTRODUCTION

The Vgate vLinker MS Bluetooth OBD2 Scanner is a versatile diagnostic tool designed to help you understand and troubleshoot your vehicle's issues. Compatible with Android, iOS, and Windows operating systems, this device offers comprehensive diagnostic capabilities, including reading and clearing trouble codes, monitoring live data, and performing various tests. Its compact design and advanced features make it an essential tool for both automotive enthusiasts and professionals.



Image: The Vgate vLinker MS Bluetooth OBD2 Scanner, showcasing its compact size and the product packaging.

PRODUCT FEATURES

- **Multi-System Compatibility:** Supports Android, iOS, and Windows operating systems for broad device compatibility.
- **Advanced CAN Protocols:** Includes CH-CAN and LS-CAN support, in addition to standard OBD2 protocols, for wider vehicle model compatibility.
- **Smart Sleep Mode:** Features automatic sleep and wake-up modes to conserve vehicle battery, with a

hibernation current as low as 3mA.

- **Fast Data Transfer:** Enhanced programming speed with OBD request bytes up to 4K and baud rate increased to 3M bps.
- **Broad Vehicle Compatibility:** Works with all 1996 and newer 12V/24V gasoline vehicles and small diesel vehicles (6.5T or less) compatible with the standard OBD2 protocol.
- **Anti-Hacking Security:** Incorporates technology to protect against unauthorized access.

CAR CARE MADE EASY

Your ultimate OBD2 Scanner for Diagnostics.
Maintenance, and Repair.

 Read & Clear Engine Trouble Codes	 Code Definition, Layman's Definition	 Emissions/SMOG Check Readiness	 View, Graph, & Replay Real-Time Live Data
 Verified Fix by Master Technician	 Battery & Alternator Test	 Unlimited Vehicle Scans	 Anti-hacking technology



Image: An illustration highlighting the various car care functions made easy by the vLinker MS, including reading/clearing codes, emissions checks, and real-time data viewing.

SETUP AND CONNECTION

Initial Setup

1. Locate your vehicle's OBD2 port, typically under the dashboard on the driver's side.
2. Plug the Vgate vLinker MS device firmly into the OBD2 port. The device will power on automatically.

3. Ensure your vehicle's ignition is in the "ON" position (engine can be off).

Connecting to iOS Devices

1. Open your iPhone's Bluetooth settings, search for "vLinker MS XXXXX" (where XXXXX is a unique identifier), and tap to connect.
2. A random pairing code will be generated. Confirm the code and click "Pair".
3. Once paired, open your preferred OBD2 diagnostic application (e.g., Car Scanner).
4. Within the app's settings, navigate to "Adapter OBDII ELM327" and select "Bluetooth MFI" as the connection type.
5. Select "vLinker MS" as the device name.
6. After selecting the correct device, return to the home page and click "CONNECT".

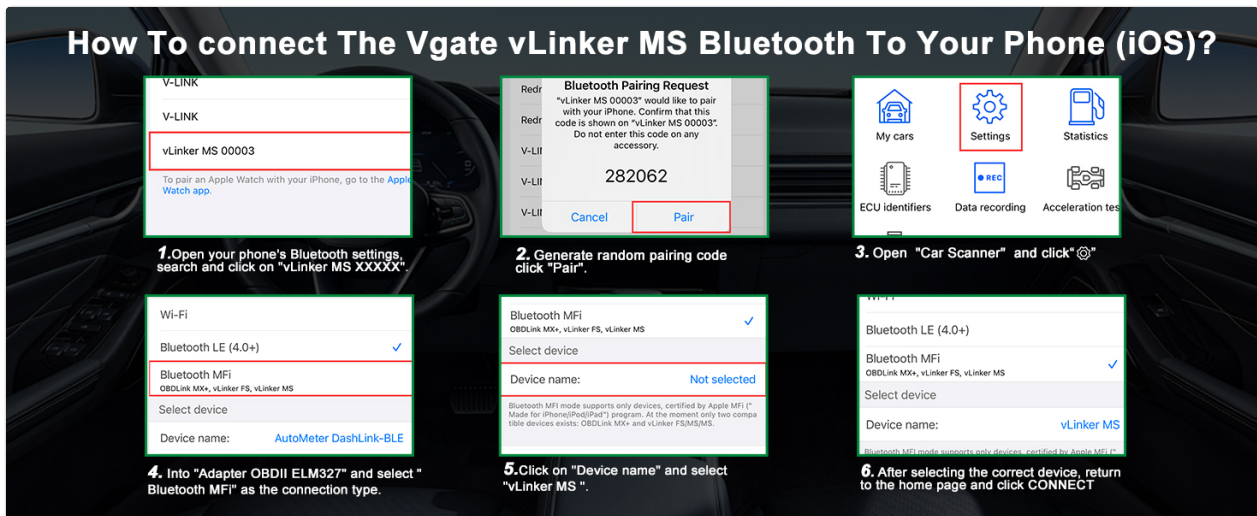


Image: Visual instructions detailing the Bluetooth pairing process for iOS devices with the vLinker MS scanner.

Connecting to Android Devices

1. Open your phone's Bluetooth settings, search for "vLinker MS XXXXX" and tap to connect.
2. A random pairing code will be generated. Confirm the code and click "Pair".
3. Once paired, open your preferred OBD2 diagnostic application (e.g., Car Scanner).
4. Within the app's settings, navigate to "Adapter OBDII ELM327" and select "Bluetooth MFI" as the connection type.
5. Select "vLinker MS" as the device name.
6. After selecting the correct device, return to the home page and click "CONNECT".

How To connect The Vgate vLinker MS Bluetooth To Your Phone (Android) ?

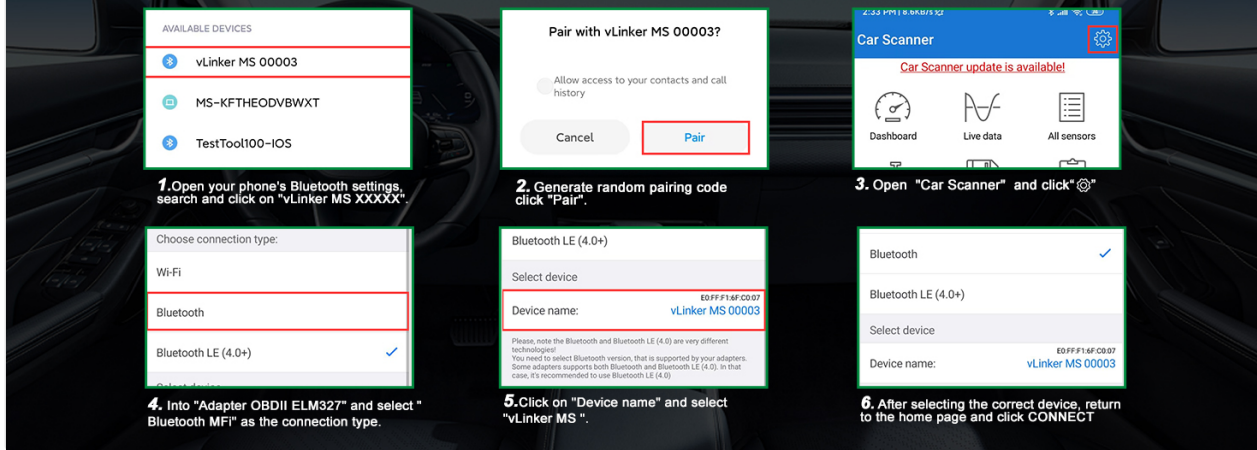


Image: Visual instructions detailing the Bluetooth pairing process for Android devices with the vLinker MS scanner.

OPERATING THE DEVICE

Once connected, the Vgate vLinker MS allows you to perform various diagnostic functions through a compatible third-party application. The functionality will depend on the specific app used.

Common Functions

- **Read & Clear Engine Trouble Codes:** Access and clear Diagnostic Trouble Codes (DTCs) that illuminate the Check Engine Light.
- **View Live Data:** Monitor real-time sensor data such as engine RPM, vehicle speed, coolant temperature, fuel system status, and more.
- **Emissions/SMOG Check Readiness:** Determine if your vehicle is ready for an emissions test.
- **Battery & Alternator Test:** Some applications may offer basic battery and charging system health checks.
- **Advanced Diagnostics:** With compatible apps, access deeper system diagnostics for ABS, airbags, transmission, and other modules.



Image: An overview of popular applications recommended for use with the vLinker MS, including a sample app interface showing diagnostic options.

Note: While the vLinker MS is compatible with many software applications, some features or the software itself may require an additional purchase or subscription directly from the software developer.



Image: A visual representation of various popular diagnostic applications that work with the vLinker MS, along with a

MAINTENANCE

Battery Saver Technology

The vLinker MS features intelligent power management. It automatically enters a hibernation state approximately 20 minutes after the car is stopped and the engine is turned off, reducing current consumption to as low as 3mA. This prevents battery drain, even if left plugged into the OBD2 port.



Image: A graphic illustrating the battery saver technology, showing a battery icon superimposed on a car dashboard, indicating power efficiency.

Firmware Updates

Free firmware updates are available to ensure optimal performance and compatibility. It is recommended to periodically check for and install updates.

How to Update Firmware:

1. Press the vLinker MS Bluetooth button, then open your phone's Bluetooth settings, search for and tap "vLinker MS XXXXX".
2. A random pairing code will be generated. Confirm the code and click "Pair".
3. Once successfully connected to the Bluetooth device "vLinker MS XXXXX", download the "VgateFwUpdater" app. You can scan the QR code on the product package or visit <https://qr19.cn/DzGyXo>.
4. Open the app and click "Auto Connect" or click "Scan" to scan the same QR code again.
5. Click on "DOWNLOAD".
6. When a prompt appears asking if you want to update to the latest version, click "Yes".
7. Once "Upgrade successful" is displayed, the update is complete.

How to Update vLinker MS(Bluetooth) Adapter Firmware?

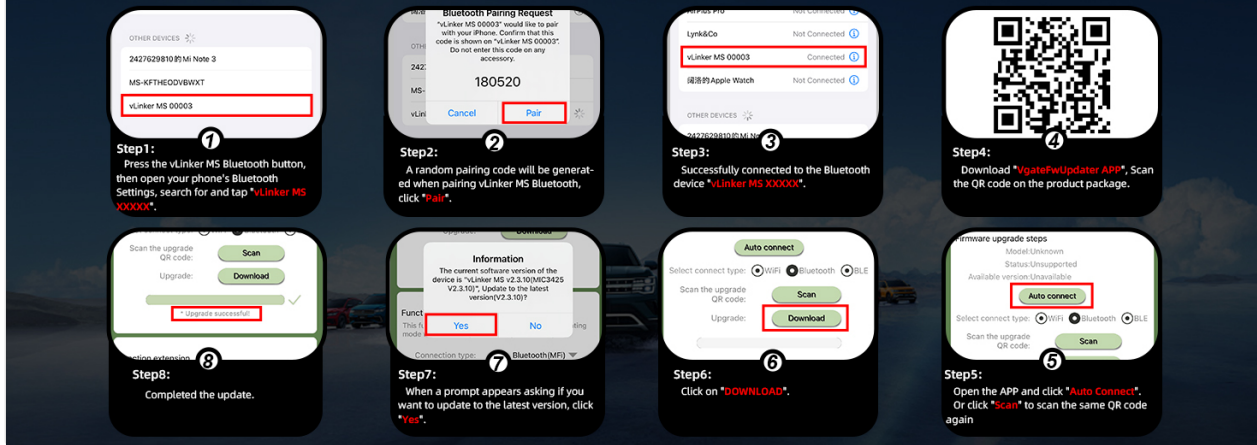


Image: Detailed visual instructions for updating the firmware of the vLinker MS Bluetooth adapter using a mobile application.

TROUBLESHOOTING

- **Device Not Powering On:** Ensure the vLinker MS is securely plugged into the OBD2 port and the vehicle's ignition is in the "ON" position. Check the vehicle's OBD2 port for any damage or debris.
- **Bluetooth Pairing Issues:**
 - Make sure Bluetooth is enabled on your mobile device.
 - Forget the device in your phone's Bluetooth settings and try pairing again.
 - Restart both your mobile device and the vehicle.
 - Ensure no other Bluetooth devices are interfering with the connection.
- **App Not Connecting to Device:**
 - Verify that the vLinker MS is successfully paired in your phone's Bluetooth settings.
 - Check the app's settings to ensure the correct adapter type (Bluetooth MFI) and device name ("vLinker MS") are selected.
 - Ensure the app is up-to-date.
 - Some apps may require specific permissions; check your phone's app settings.
- **No Data or Incorrect Readings:**
 - Confirm your vehicle is OBD2 compliant (most vehicles 1996 and newer are).
 - Ensure the app's vehicle profile settings are correctly configured for your specific car model.
 - Try a different compatible app to rule out app-specific issues.

SPECIFICATIONS

Feature	Detail
---------	--------

Brand	Vgate
Model Number	vLinker MS Bluetooth
Operating System Compatibility	iOS, Android, Windows
Power Source	Battery Powered (via OBD2 port)
Item Weight	3.52 ounces
Package Dimensions	3.31 x 3.15 x 1.46 inches
Working Current	28mA
Hibernation Current	3mA
Supported Protocols	SAE J1850-PWM, SAE J1850-VPW, ISO 9141-2, ISO 14230-4 (slow), ISO 14230-4 (fast), ISO 15765-4 (CAN), SAE J1939 (CAN), ISO 11898 (raw CAN), Medium Speed CAN (MS-CAN), Single Wire CAN (GMLAN), Chassis CAN (CH-CAN), Infotainment CAN (LS-CAN)

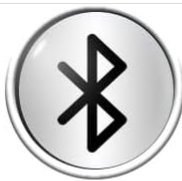


Image: The vLinker MS device with its dimensions (length, width, height) indicated, along with close-ups of the OBDII connector and indicator lights.

OBD2 Standard Protocols

SAE J1850-PWM	ISO 14230-4(slow)
SAE J1850-VPW	ISO 14230-4(fast)
ISO 9141-2	ISO 15765-4(CAN)

More Protocols

SAE J1939(CAN)
ISO 11898(raw CAN)
Medium Speed CAN(MS-CAN)

Single Wire CAN(GMLAN)
Chassis CAN(CH CAN)
Infotainment CAN(LS CAN)



Image: A visual list of the OBD2 standard protocols and additional CAN protocols (CH-CAN, LS-CAN, GMLAN) supported by the vLinker MS.

OFFICIAL PRODUCT VIDEO

Your browser does not support the video tag.

Video: An official product video demonstrating the Vgate vLinker MS Bluetooth OBD2 Scanner, its features, and usage.

WARRANTY AND SUPPORT

The Vgate vLinker MS Bluetooth OBD2 Scanner comes with a one-year warranty. For any questions or assistance, please contact the VgateDirect after-sales service team directly. They are committed to providing hassle-free sales service and support.



Image: A graphic symbolizing customer support, indicating the availability of assistance for product inquiries.

© 2024 Vgate. All rights reserved.

Documents - Vgate – vLinker MS Bluetooth



[\[pdf\]](#) User Manual

vLinker MS Bluetooth 4 30 manual pvx 011 Vgate univerzálna autodiagnostika OBD II pre Apple a Android SUNNYSOFT sunnysoft cz |||

...

lang: **score:24** filesize: 51.43 M page_count: 11 document date: 2024-11-18