

## Manuals+

[Q & A](#) | [Deep Search](#) | [Upload](#)

[manuals.plus](#) /

› [TAMIYA](#) /

› [TAMIYA 1/10 RC Toyota Celica GT-Four ST185 TT-02 Limited Edition Instruction Manual](#)

## TAMIYA 47500

# TAMIYA 1/10 RC Toyota Celica GT-Four ST185 TT-02 Limited Edition Instruction Manual

Model: 47500

## INTRODUCTION

This manual provides detailed instructions for the assembly, operation, and maintenance of your TAMIYA 1/10 scale RC Toyota Celica GT-Four ST185 (TT-02 Chassis) model kit. Please read this manual thoroughly before beginning assembly or operation to ensure correct usage and optimal performance.



Image 1: The TAMIYA 1/10 RC Toyota Celica GT-Four ST185 TT-02 Limited Edition model car, showcasing its white pre-painted body and detailed exterior.

## SAFETY INFORMATION

### WARNING:

Before starting assembly, ensure all instructions are read and understood. If a child is assembling the model, a supervising adult must also read the building instructions. Assembly involves tools, including knives; exercise special care to prevent

injury. If difficulties arise during assembly, consult a supervising adult, an experienced RC modeler, or a specialist dealer. Use tools only for their intended purpose. Incorrect use carries a risk of injury. If paints and/or glue (not included in the kit) are used, follow their respective instructions. Keep the kit away from small children. Prevent children from putting components in their mouth or placing plastic bags over their heads.

## PACKAGE CONTENTS

The TAMIYA 1/10 RC Toyota Celica GT-Four ST185 kit includes the following components:

- High-quality, pre-painted polycarbonate body (Toyota Celica GT-Four ST185)
- TT-02 Chassis components
- 540 electric motor
- Electronic Speed Controller (ESC)
- Detailed illustrated instruction manual

Note: This is a model kit. Additional items are required for operation and are not included in this package. Refer to the "Required Accessories" section for details.



Image 2: An overview of the TAMIYA TT-02 chassis and the pre-painted Toyota Celica GT-Four body, highlighting key features like the shaft-driven 4WD system.

## SETUP AND ASSEMBLY

The TAMIYA TT-02 chassis is designed for robust performance and ease of assembly. Follow the detailed illustrated instructions provided in the kit for step-by-step guidance.

### Required Accessories (Not Included):

- Remote control system with receiver
- Steering servo
- 7.2 V NiMH battery pack
- Compatible battery charger
- Tools for assembly (e.g., hobby knife, screwdrivers, pliers)
- Paints and glue (if customizing or for specific details not pre-painted)

## Assembly Overview:

1. **Chassis Construction:** Assemble the TT-02 chassis components, including the frame, suspension arms, and drive shafts. The TT-02 features a 4WD all-wheel drive system with double wishbone suspension and suspension struts on all four wheels.
2. **Motor and ESC Installation:** Mount the included 540 electric motor and electronic speed controller onto the chassis according to the instructions.
3. **Steering Servo Installation:** Install your chosen steering servo to control the front wheels.
4. **Radio System Setup:** Connect the receiver to the ESC and steering servo. Ensure proper binding with your remote control transmitter.
5. **Wheel and Tire Assembly:** Attach the wheels and tires to the chassis.
6. **Body Mounting:** Secure the pre-painted Toyota Celica GT-Four body to the chassis. The body is designed for a faithful representation of the original vehicle.

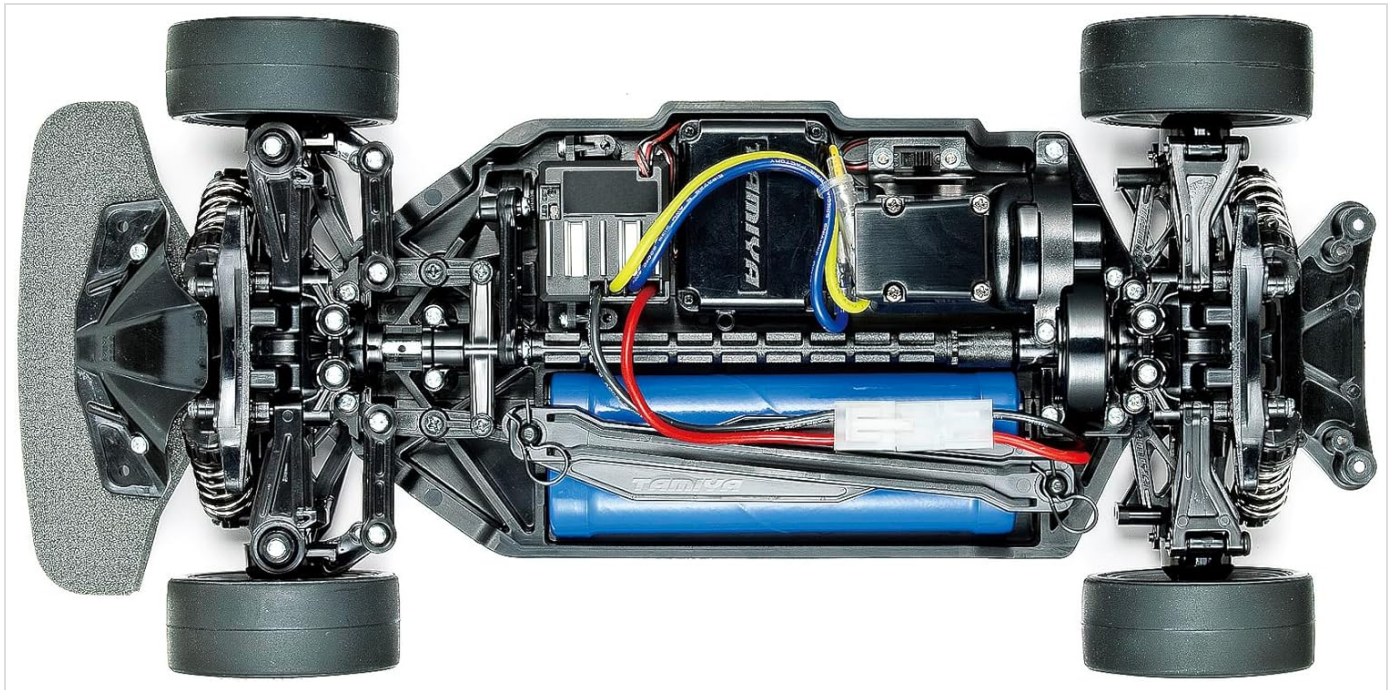


Image 3: An underside view of the TT-02 chassis, showing the layout of the motor, electronic speed controller, battery compartment, and 4WD drivetrain components.



Image 4: Close-up of the front section of the RC Toyota Celica GT-Four, highlighting the detailed grille, bumper, and pop-up headlight design.



Image 5: Close-up of the rear section of the RC Toyota Celica GT-Four, showing the detailed taillights, rear bumper, and integrated spoiler.



Image 6: Detail of the side mirror on the TAMIYA RC Toyota Celica GT-Four body, illustrating the attention to scale details.

## OPERATING INSTRUCTIONS

---

Once assembled and all required accessories are installed and charged, your TAMIYA RC Toyota Celica GT-Four is ready for operation.

1. **Battery Installation:** Ensure the 7.2V NiMH battery pack is fully charged and securely installed in the chassis battery compartment.
2. **Transmitter Power On:** Turn on your remote control transmitter first.
3. **Vehicle Power On:** Turn on the electronic speed controller (ESC) switch on the vehicle.
4. **Function Check:** Verify that steering and throttle respond correctly to transmitter inputs. Adjust trim settings on your transmitter if necessary for straight driving.
5. **Driving:** Operate the vehicle in an open, safe area, away from people, pets, and obstacles. Avoid wet conditions or extreme temperatures.
6. **Power Off Sequence:** Always turn off the vehicle's ESC first, then turn off the remote control transmitter.

The TT-02 chassis allows for adjustments to wheelbase, ground clearance, track, and gear ratio. Consult the detailed instruction manual for specific tuning procedures to optimize performance for different driving conditions.

## MAINTENANCE

---

Regular maintenance ensures the longevity and performance of your RC model.

- **Cleaning:** After each use, clean the chassis and body to remove dirt, dust, and debris. Use a soft brush or

compressed air. Avoid using water directly on electronics.

- **Inspection:** Periodically inspect all screws, nuts, and bolts for tightness. Check for any damaged or worn parts, especially in the suspension and drivetrain.
- **Lubrication:** Apply appropriate RC-specific lubricants to moving parts such as gears and bearings as recommended in the detailed manual.
- **Battery Care:** Store batteries in a cool, dry place. Follow manufacturer guidelines for charging and discharging to prolong battery life.
- **Motor Care:** Keep the motor free from debris. If the motor performance degrades, consider cleaning or replacing the motor brushes (if applicable) or the motor itself.

## TROUBLESHOOTING

This section addresses common issues you might encounter with your TAMIYA RC model.

Problem	Possible Cause	Solution
Vehicle does not respond to controls.	<ul style="list-style-type: none"><li>• Battery discharged or improperly connected.</li><li>• Transmitter or receiver not powered on.</li><li>• Transmitter and receiver not bound.</li><li>• ESC switch off.</li></ul>	<ul style="list-style-type: none"><li>• Charge battery, ensure secure connection.</li><li>• Turn on both transmitter and receiver.</li><li>• Perform binding procedure as per radio system manual.</li><li>• Turn on ESC switch.</li></ul>
Poor steering response or vehicle pulls to one side.	<ul style="list-style-type: none"><li>• Steering trim incorrect.</li><li>• Steering servo linkage loose or damaged.</li><li>• Suspension components damaged.</li></ul>	<ul style="list-style-type: none"><li>• Adjust steering trim on transmitter.</li><li>• Inspect and secure/replace linkage.</li><li>• Inspect and replace damaged suspension parts.</li></ul>
Motor runs but wheels do not turn.	<ul style="list-style-type: none"><li>• Gear mesh incorrect.</li><li>• Driveshaft or differential damaged.</li></ul>	<ul style="list-style-type: none"><li>• Adjust gear mesh according to manual.</li><li>• Inspect and replace damaged drivetrain components.</li></ul>

For more complex issues, refer to the detailed instruction manual included with your kit or contact TAMIYA customer support.

## SPECIFICATIONS

Model Name	TAMIYA 1/10 RC Toyota Celica GT-Four ST185
Model Number	47500
Scale	1:10
Chassis Type	TT-02 (Shaft Driven 4WD)
Motor	540 Type Electric Motor
Electronic Speed Controller (ESC)	Included

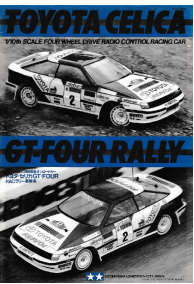
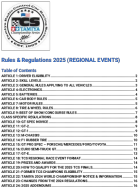

Product Dimensions (Assembled)	Length: 450 mm (17.72 inches), Width: 187 mm (7.36 inches), Height: 136 mm (5.35 inches)
Item Weight	Approximately 1 pound (0.45 kg)
Recommended Age	14 years and up
Batteries Required	1 Nonstandard Battery (7.2V NiMH recommended, not included)
Release Date	August 30, 2024

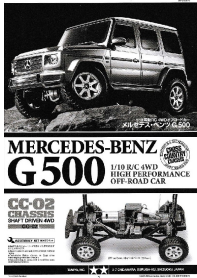
## WARRANTY AND SUPPORT

For warranty information, technical support, or replacement parts, please refer to the official TAMIYA website or contact your local TAMIYA distributor. Keep your purchase receipt as proof of purchase.  
Official TAMIYA Website: [www.tamiya.com](http://www.tamiya.com)

© 2025 TAMIYA. All rights reserved.

### Related Documents - 47500

	<p><a href="#">Tamiya Toyota Celica GT-Four Rally (TA01) Model Kit Assembly Instructions</a></p> <p>Comprehensive assembly guide for the Tamiya Toyota Celica GT-Four Rally (TA01) radio-controlled model car kit, detailing parts, tools, and construction steps.</p>
	<p><a href="#">Tamiya Championship Series (TCS) 2025 Rules &amp; Regulations</a></p> <p>Official rules and regulations for the Tamiya Championship Series (TCS) 2025 regional race events. Covers driver eligibility, skill levels, general vehicle rules, electronics, batteries, car bodies, motors, tires, class-specific regulations (GT-1, GT-2, M-Chassis, F1, Euro Truck, GT-E, GT Pro Spec, GT Novice), event formats, prizes, and qualification for TCS Finals.</p>
	<p><a href="#">2025 Tamiya Championship Series National Finals Rules &amp; Regulations</a></p> <p>Official rules and regulations for the 2025 Tamiya Championship Series (TCS) National Finals, covering driver eligibility, class-specific rules, vehicle specifications, and race event format for radio-controlled car racing.</p>



### [Tamiya RC Mercedes-Benz G 500 \(CC-02\) Assembly Instructions](#)

Detailed assembly instructions and parts list for the Tamiya 1/10 RC 4WD High Performance Off-Road Car, Mercedes-Benz G 500 (CC-02) model kit. Includes step-by-step guidance, painting, and troubleshooting.



### [Tamiya Cup 2020 Reglement - Officiële Regels](#)

Officiële reglementen voor de Tamiya Cup 2020, met gedetailleerde regels, technische specificaties en wedstrijdkalender voor diverse RC-autoklassen.



### [Tamiya TT-02 Chassis Shaft Driven 4WD Assembly Manual](#)

Detailed assembly instructions for the Tamiya TT-02 Chassis Shaft Driven 4WD radio-controlled racing car, covering parts, setup options, operation, safety, and troubleshooting.