

Manuals+

[Q & A](#) | [Deep Search](#) | [Upload](#)

[manuals.plus](#) /

› [Phomemo](#) /

› [Phomemo M250 Label Maker User Manual](#)

Phomemo M250

Phomemo M250 Label Maker User Manual

Model: M250 | Brand: Phomemo

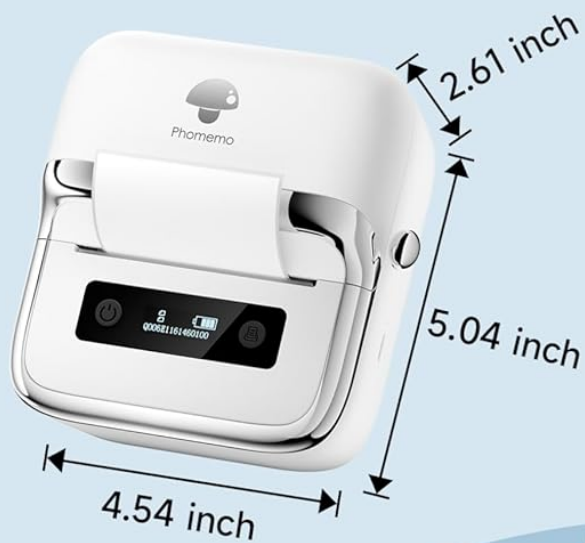
1. INTRODUCTION

The Phomemo M250 is a versatile and portable thermal label maker designed for a wide range of labeling needs, from business to home organization. This device offers inkless printing, high definition output, and supports various label sizes. It connects seamlessly with smartphones via Bluetooth and with PCs via USB, providing a flexible and efficient labeling solution.



Figure 1.1: Phomemo M250 Label Maker and example labels.

Compact and Portable



Only 0.86lb



Easy to fit in your bag
Inkless thermal label printer,
no ink required
Carry it with you, print it anytime

Figure 1.2: The compact and portable design of the Phomemo M250, easily fitting into a bag.

2. SETUP GUIDE

2.1. What's in the Box

- 1 x Phomemo M250 Label Maker
- 100 Sheets x 1.57" x 1.18" Thermal Labels (Starter Roll)

- 1 x User Manual
- 1 x USB Type-C Data Cable

2.2. Initial Setup and Label Loading

Follow these steps to prepare your Phomemo M250 for first use:

1. Press the button to open the M250 top cover.
2. Insert the label roll with the print side facing down and adjust it to the appropriate size. Ensure the roll is centered for proper printing.
3. Close the top cover securely.

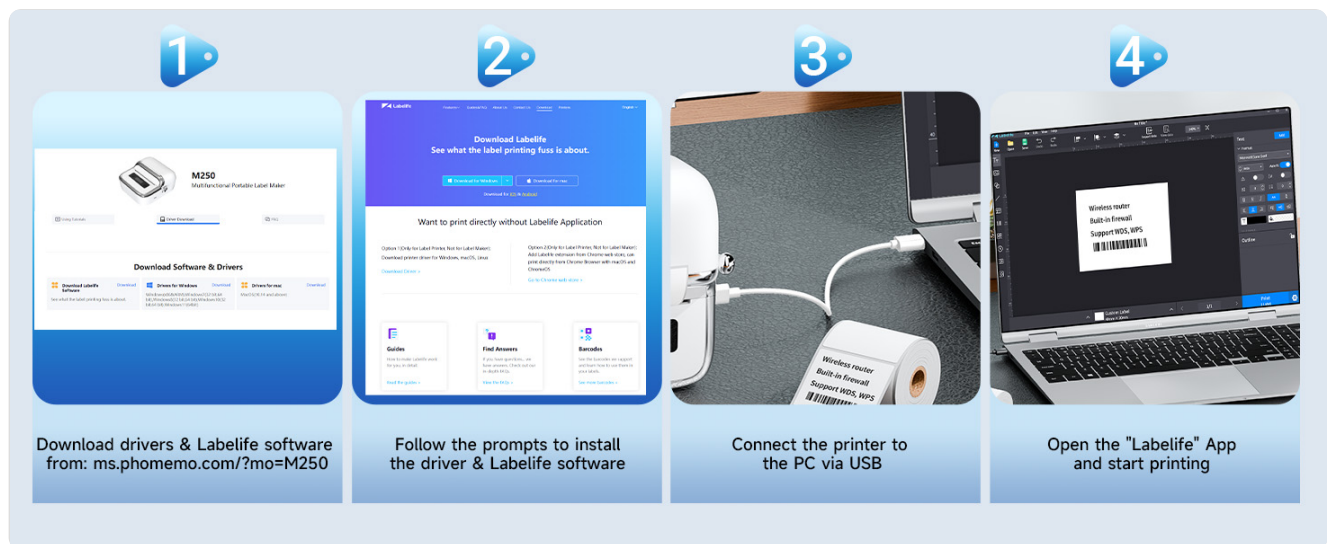


Figure 2.1: Easy setup steps for the Phomemo M250, including label installation.

M250 3 Inch Label Maker

Support 0.78-3 inches (20mm-75mm)

More Easy To
Install Labels



Figure 2.2: Detailed view of label installation within the M250 printer.

2.3. Mobile App Setup (Print Master)

The Phomemo M250 connects to your smartphone or tablet via Bluetooth using the 'Print Master' app. This app is compatible with Android and iOS devices.

1. Download the 'Print Master' app from your device's app store (Google Play Store for Android, Apple App Store for iOS).
2. Ensure Bluetooth is enabled on your mobile device.

3. Open the 'Print Master' app and follow the on-screen prompts to connect to your Phomemo M250 printer.
4. Once connected, you can begin creating and printing labels.



Figure 2.3: Steps for connecting and using the 'Print Master' app with the M250.

2.4. PC Software Setup (Labelife)

For computer connectivity, the Phomemo M250 uses the 'Labelife' software and requires driver installation. It is compatible with macOS and Windows 7 or above.

1. Download the drivers and 'Labelife' software from the official Phomemo website: ms.phomemo.com/?mo=M250.
2. Follow the on-screen prompts to install the driver and software on your computer.
3. Connect the Phomemo M250 printer to your PC using the provided USB Type-C cable.
4. Open the 'Labelife' app and begin printing.



Figure 2.4: Steps for setting up the Phomemo M250 with a PC using the 'Labelife' software.

Supports Bluetooth connection & USB connection



Figure 2.5: The M250 supports both Bluetooth for mobile devices and USB for PC connections.

3. OPERATION

3.1. Basic Printing

Once connected to the 'Print Master' app or 'Labelife' software, you can design and print your labels. The M250 supports a wide printing width of 0.78"-3.14" (20mm-75mm).

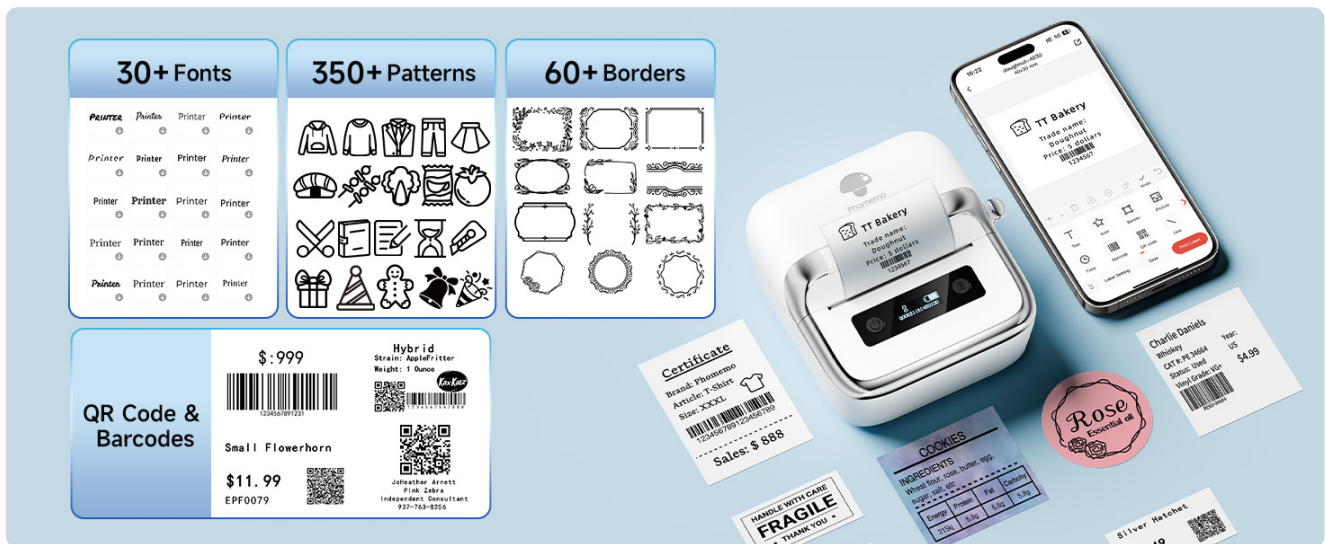


Figure 3.1: The M250 supports multi-size printing for labels ranging from 0.78 to 3.14 inches wide.

3.2. Advanced Features (Print Master App)

The 'Print Master' app offers extensive customization options for your labels:

- **Content Creation:** Generate QR codes, text, OCR (Optical Character Recognition), images, and utilize voice recognition for label content.
- **Batch Printing:** Print multiple labels efficiently.
- **Design Resources:** Access over 1500 symbols, 200+ templates, 110+ fonts, and support for 20+ languages.

Powerful “Print Master” App

5000+

Free Labels Material



Figure 3.2: The 'Print Master' app provides a rich library of design elements and customization tools.

Figure 3.3: Customize labels with a variety of fonts, patterns, borders, and integrate QR codes or barcodes.

3.3. Battery and Performance

The Phomemo M250 features an extended 2200mAh battery, allowing it to print up to 5000 labels on a single charge. It boasts a printing speed of 30-50mm per second. An automatic sleep mode conserves energy by shutting down after 5 minutes of inactivity.

Long-lasting Battery Life 2200mAh



Figure 3.4: Key performance metrics of the M250, including battery life and print speed.

3.4. Usage Scenarios

The M250 is suitable for various applications, including:

- Barcode and QR code printing
- Address and mailing labels
- Jar and food labels
- Office and home organization (e.g., files, storage bins)

- Product labeling for small businesses

Multiple Usage Scenarios



Figure 3.5: Examples of multiple usage scenarios for the Phomemo M250 label maker.

4. MAINTENANCE

To ensure optimal performance and longevity of your Phomemo M250 label maker, regular maintenance is recommended.

4.1. Cleaning the Print Head

Dust and adhesive residue can accumulate on the print head, affecting print quality. Clean the print head periodically:

- Turn off the printer and disconnect the power cable.
- Open the top cover.
- Gently wipe the print head with a cotton swab lightly dampened with isopropyl alcohol.
- Allow the print head to dry completely before closing the cover and resuming use.

4.2. Label Roll Handling and Storage

Proper handling of label rolls is crucial for consistent printing:

- Always ensure the label roll is properly centered when loading to prevent off-center prints.
- Store unused label rolls in a cool, dry place away from direct sunlight and excessive heat to preserve their adhesive and thermal properties.
- Avoid touching the thermal printing surface of the labels with bare hands, as oils can affect print quality.



Figure 4.1: Features like the secure built-in cutter design contribute to ease of maintenance and use.

5. TROUBLESHOOTING

If you encounter issues with your Phomemo M250, refer to the following common problems and solutions:

Problem	Possible Cause	Solution
Printer not connecting via Bluetooth	Bluetooth is off on device; Printer is out of range; App not recognizing printer.	Ensure Bluetooth is on and the printer is within range. Restart the app and printer. Try re-pairing the device.
Poor print quality (faded, lines, incomplete)	Print head is dirty; Incorrect label orientation; Low battery.	Clean the print head (see Maintenance section). Ensure labels are inserted print-side down. Charge the printer fully.

Problem	Possible Cause	Solution
Labels not feeding correctly or printing off-center	Label roll not centered; Labels jammed; Incorrect label size setting in app/software.	Open the cover and ensure the label roll is properly centered and not jammed. Verify the label size settings in the 'Print Master' or 'Labelife' app match your physical labels.
Printer not responding	Printer is off; Low battery; Software/app crash.	Turn on the printer. Charge the printer. Restart the app/software and the printer.

6. SPECIFICATIONS

Detailed technical specifications for the Phomemo M250 Label Maker:

Feature	Description
Model Name	Phomemo M250 Label Maker
Printing Technology	Thermal
Connectivity Technology	Bluetooth, USB Type-C
Compatible Devices	Smartphones (iOS, Android), PC (macOS, Windows 7 or above), Tablets, Laptops
Maximum Media Size	0.78" - 3.14" (20mm - 75mm) width
Print Speed	30-50 mm/s
Printer Output	Monochrome (Black)
Battery	2200mAh Lithium Polymer (included)
Item Weight	13.8 ounces (390.3 Grams)
Product Dimensions	6.3 x 6.3 x 3.54 inches (5.05"D x 4.54"W x 2.61"H)
Memory Storage Capacity	64 MB
Control Method	App
Manufacturer	Phomemo






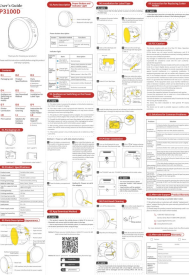
7. WARRANTY AND SUPPORT

The Phomemo M250 Label Maker comes with a Limited Warranty provided by the manufacturer, Phomemo. For specific warranty terms and conditions, please refer to the documentation included with your product or visit the official Phomemo website.

For technical support, troubleshooting assistance, or inquiries regarding your product, please contact Phomemo customer service through their official channels. You can often find support contact information on the manufacturer's website or within the 'Print Master' or 'Labelife' applications.

Additionally, protection plans may be available for purchase to extend coverage beyond the standard manufacturer's warranty. Please check with your retailer for available options.

Related Documents - M250

	<p>Phomemo M220 Quick Start Guide</p> <p>A concise guide to setting up and using the Phomemo M220 label maker, covering preparation, Bluetooth smartphone connection, and PC connectivity via USB, including FCC compliance information and support details.</p>
<p>User Guide</p> <p>M110</p>  <p>English</p>	<p>Phomemo M110 Label Maker User Guide</p> <p>Comprehensive user guide for the Phomemo M110 label maker, covering product introduction, setup, app usage, paper replacement, PC application installation, safety instructions, cleaning, maintenance, and regulatory information.</p>
<p>Instruction</p> <p>M220 Product Instruction</p>  <p>Please read this instruction book carefully before operating the product.</p>	<p>Phomemo M220 Label Maker User Manual</p> <p>Comprehensive guide for the Phomemo M220 label maker, covering packing list, product specifications, appearance introduction, component description, paper roll installation, app download and connection, label size confirmation, printing guide, troubleshooting, and warranty information.</p>
 <p>Phomemo M220 Thermal Label Maker</p>	<p>Phomemo M220 Thermal Label Maker User Guide</p> <p>A guide to using the Phomemo M220 Thermal Label Maker, including setup, app connection, and troubleshooting.</p>
<p>Instruction</p> <p>D30 Product Instruction</p>  <p>Please read this instruction book carefully before operating the product.</p>	<p>Phomemo D30 Smart Mini Label Maker Product Instruction Manual</p> <p>Comprehensive user guide for the Phomemo D30 Smart Mini Label Maker, detailing item checklist, specifications, parts and features, power and indicator lights, usage instructions, app download and connection, label size identification, printing modes (Lite and Creation), daily cleaning, troubleshooting, warranty information, and FCC compliance.</p>
	<p>Phomemo P3100D Portable Label Maker User Guide</p> <p>User's guide for the Phomemo P3100D portable label maker, covering setup, operation, troubleshooting, and product specifications. Learn how to install label tape, connect via Bluetooth, and maintain your device.</p>



[\[pdf\]](#) Label

30400300981

Phomemo M110 M220 M221 M200 M120 M100 M108 M150 M250 M260

50x50mm Round Self Adhesive Labels for Label Printer 140 Pack be Office Products A12lmriMnkL m
media amazon images | ||

...

lang: **score:9** filesize: 1.14 M page_count: 1 document date: 2024-11-12