

[manuals.plus](#) /

› [Choiknbo](#) /

› [Choiknbo Smart Watch User Manual](#)

Choiknbo 707457227171

Choiknbo Smart Watch User Manual

Model: 707457227171

Brand: Choiknbo

1. INTRODUCTION

This manual provides detailed instructions for the setup, operation, and maintenance of your Choiknbo Smart Watch. Please read this manual thoroughly before using the device to ensure proper functionality and longevity.



Image: The Choiknbo Smart Watch in black, showcasing its display with time, step count, calories burned, battery percentage, and date.

2. WHAT'S IN THE BOX

Upon unboxing, please verify that all the following components are present:

- Smart Watch Device
- Charging Cable

3. SETUP GUIDE

3.1 Initial Charging

Before first use, fully charge your smartwatch. Connect the provided charging cable to the charging points on the back of the watch and plug the USB end into a compatible power source. A full charge is recommended before initial pairing.

3.2 App Download and Pairing

The Choiknbo Smart Watch operates with the "VeryFit" application. Download the "VeryFit" app from your device's app store (compatible with both iPhone and Android). Once installed, open the app and follow the on-screen instructions to pair your smartwatch via Bluetooth. Ensure your watch is powered on and sufficiently charged for successful pairing.

3.3 Attaching the Watch Bands

The watch bands come in two separate pieces. Align the pins on each band piece with the corresponding slots on the watch body. Slide the pins into place until they click securely. Ensure both sides of the band are firmly attached before wearing.

3.4 Powering On/Off

To power on the watch, long-press the function button located on the side of the device. To power off, navigate to the settings menu on the watch display and select the power off option.

4. OPERATING INSTRUCTIONS

4.1 Alexa Built-in

Your Choiknbo Smart Watch features Alexa Built-in, allowing for voice control of various functions. After connecting your watch to the "VeryFit" app and linking your Amazon account, you can use voice commands to control smart home devices, set reminders, get weather updates, and more directly from your wrist.

ALEXA VOICE ASSISTANT

Make your life more convenient

Alexa, play the latest news.

Alexa, What's the weather like today?

Alexa, set your alarm for 8:00.



Image: A user interacting with the smartwatch, demonstrating the Alexa voice assistant feature for tasks like playing news, checking weather, and setting alarms.

4.2 Sports Modes & Fitness Tracking

The smartwatch offers over 100 sports modes, including walking, running, cycling, hiking, and yoga. It accurately records your steps, calories burned, distance, heart rate, and blood oxygen levels, providing a detailed overview of your daily activities and fitness status. Access these modes and data through the watch interface or the "VeryFit" app.

100+ SPORT MODES

24H Activity Tracking Make every workout account

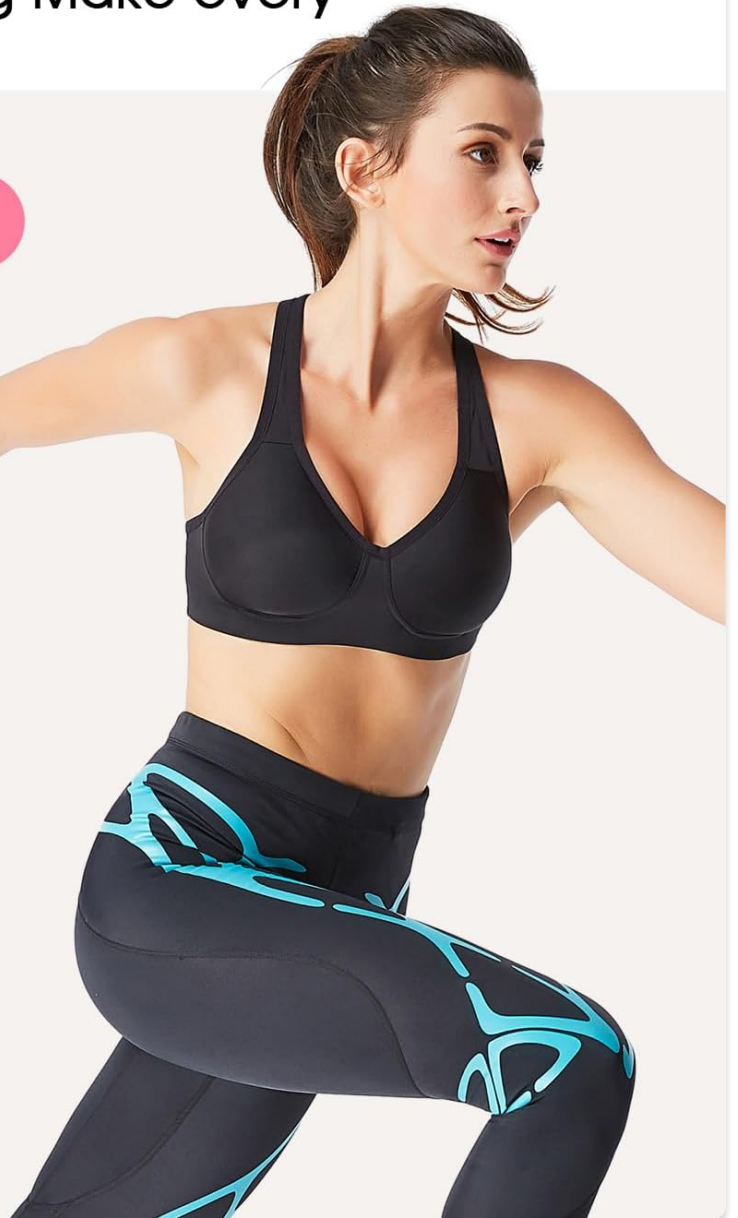


Image: A woman engaged in a running activity, with the smartwatch displaying real-time exercise metrics such as duration, calories, distance, and average pace, highlighting the 100+ sports modes feature.

4.3 Call & Message Functionality

With Bluetooth call functionality, you can answer and make calls directly from your wrist. The watch also allows you to add favorite contacts and review call logs. Additionally, it receives notifications from various applications such as WhatsApp, Twitter, Facebook, and Instagram, ensuring you stay connected without needing to check your phone constantly.

BLUETOOTH CALL & MESSAGE NOTIFICATION

Make/answer calls, read message on your wrist



Image: The smartwatch screen showing an incoming call interface, a dial pad, and a message notification from Facebook, illustrating its Bluetooth call and message notification capabilities.

4.4 24/7 Health Monitoring

The Choiknbo Smart Watch provides continuous health management. It monitors your blood oxygen (SpO2) and heart rate status with a one-click measurement function. Detailed data can be viewed in real-time on the watch and more comprehensively within the "VeryFit" app. The watch also tracks sleep cycles, offering insights into the quality of your rest to support a healthier lifestyle.

24 HOURS HEALTH TRACKER

Heart rate monitor Sleep monitor Blood oxygen

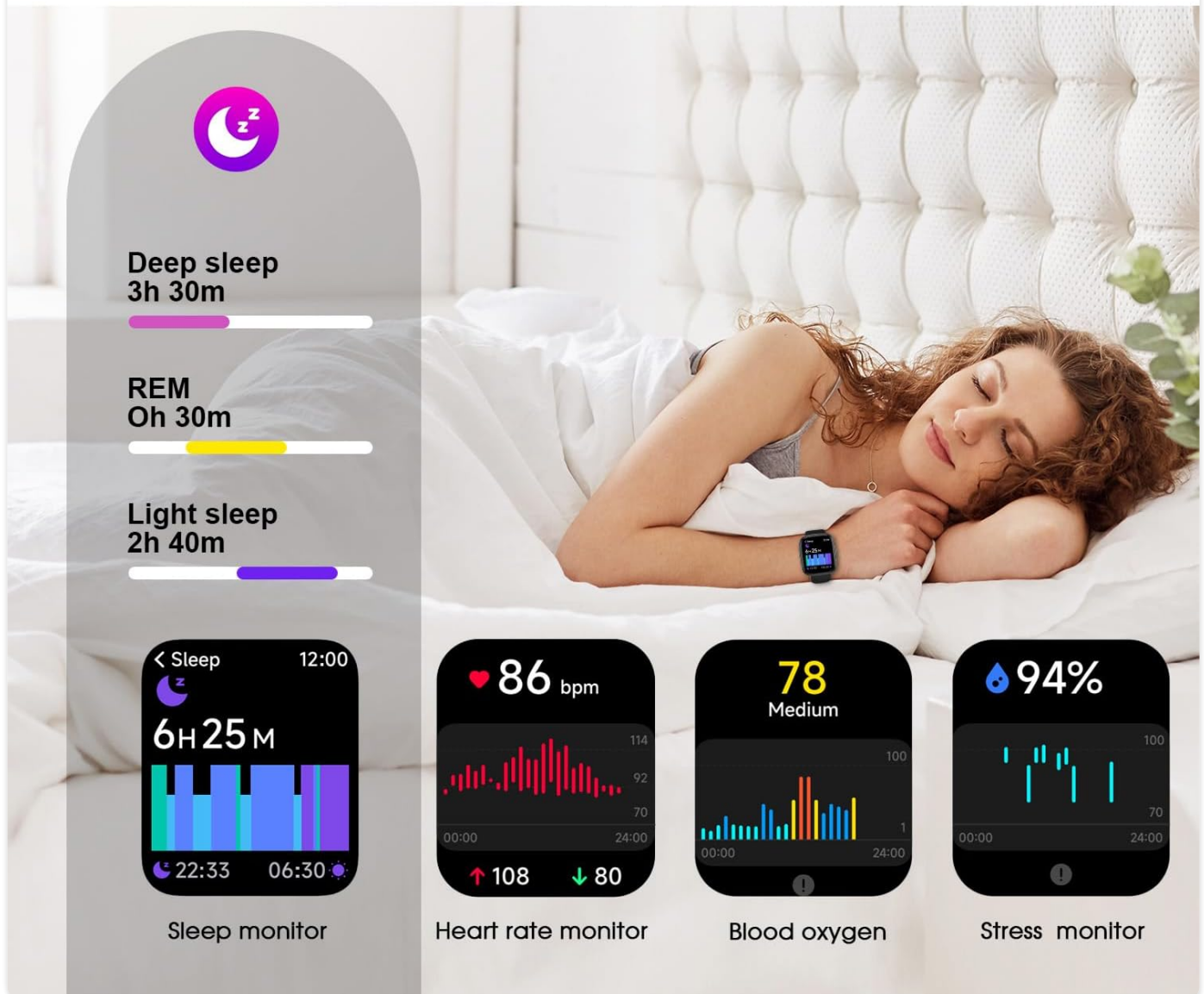


Image: A visual representation of the smartwatch's 24-hour health tracking features, including sleep duration and quality (deep, REM, light sleep), heart rate, blood oxygen, and stress levels.

4.5 Display & Customization

The watch features a 1.83-inch HD display. You can personalize your watch face with over 100 options or create a custom dial using your favorite photos. This allows for a unique and personalized user experience.

1.83" HD DISPLAY & DIY DIAL

100+ Watch Face For Your Choose, Customize Dial With Your Favorite Photo

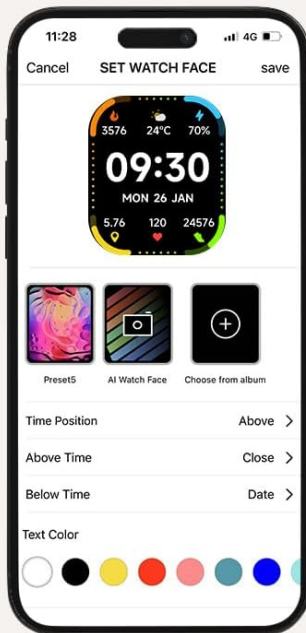


Image: A collage of different watch faces available for customization on the 1.83" HD display, including options for DIY dials using personal photos.

4.6 IP68 Waterproof Rating

The smartwatch is IP68 waterproof, making it suitable for daily activities such as washing hands, showering, and swimming. It is resistant to dust and can withstand immersion in water up to 1.5 meters for 30 minutes. Avoid hot water or steam, as this may compromise the seal.

IP68 WATERPROOF

7+ Days Long Battery Life



Image: The smartwatch being splashed with water, visually representing its IP68 waterproof capability, suitable for rain, shower, swimming, and hand washing.

4.7 Other Smart Features

The watch includes additional practical functions such as weather forecasts, music control, camera control, smart alarm clock, timer, find phone, and sedentary reminders.

5. MAINTENANCE

- **Cleaning:** Regularly clean the watch and band with a soft, dry cloth. For stubborn dirt, a slightly damp cloth can be used. Ensure the watch is completely dry before charging.
- **Charging:** Use only the provided charging cable. Avoid exposing the charging contacts to water or corrosive liquids.
- **Storage:** Store the watch in a cool, dry place when not in use.
- **Avoid Extreme Conditions:** Do not expose the watch to extreme temperatures, direct sunlight for prolonged periods, or strong magnetic fields.

6. TROUBLESHOOTING

Issue	Possible Cause	Solution
Watch does not power on	Low battery; Power button not pressed long enough.	Charge the watch fully. Long-press the power button for several seconds.
Unable to pair with phone	Bluetooth off; App not running; Watch not charged.	Ensure Bluetooth is enabled on your phone. Open the "VeryFit" app. Charge the watch. Restart both devices.
Inaccurate health data	Watch fit too loose; Sensor dirty.	Ensure the watch is snug on your wrist. Clean the sensor on the back of the watch.
Notifications not received	App permissions; Notification settings.	Check app permissions for notifications on your phone. Verify notification settings within the "VeryFit" app.

7. SPECIFICATIONS

- Model Number:** 707457227171
- Screen Size:** 1.83 Inches
- Display Type:** HD Touchscreen
- Waterproof Rating:** IP68
- Battery Capacity:** 350 Milliamp Hours
- Battery Type:** Lithium Ion
- Connectivity:** Bluetooth
- Operating System:** Android (compatible with iOS)
- Item Weight:** 2.39 ounces
- Features:** Alexa Built-in, Heart Rate Monitor, Pedometer, Activity Tracker, Water Resistant, Sedentary Reminder, Calorie Tracker, Notifications, Sleep Monitor, Distance Tracker, Alarm Clock, Music Controller, Camera Control.

8. WARRANTY AND SUPPORT

For warranty information or technical support, please refer to the product packaging or contact Choiknbo customer service directly. Keep your purchase receipt as proof of purchase.

