

manuals.plus /

› [javiscam](#) /

› [javiscam 4K Mini Security Camera Instruction Manual](#)

javiscam USB6

javiscam 4K Mini Security Camera Instruction Manual

Model: USB6

INTRODUCTION

The javiscam 4K Mini Security Camera is a versatile and compact device designed for indoor monitoring. It offers high-quality video, advanced motion detection, and long-lasting battery life, making it ideal for keeping an eye on your home, children, or pets. This manual provides detailed instructions for setting up, operating, and maintaining your camera to ensure optimal performance.



Figure 1: The compact javiscam 4K Mini Security Camera and its live feed on a smartphone.

PRODUCT FEATURES

- **High Video Quality and Infrared Night Vision:** Provides 4K video and image with a wide 160-degree angle view. Offers clear visibility day or night with infrared night vision.
- **PIR Motion Detection with AI Analysis Recognition:** Equipped with advanced smart AI motion detection to accurately analyze and recognize people and vehicles. Sends real-time notifications to your phone.
- **100% Wireless Security and Rechargeable Battery:** Features a built-in 2800mAh premium rechargeable battery for true low power consumption. No wires needed for installation.
- **Cloud & SD Storage:** Supports up to 128G SD card and financial encryption for secure data. Cloud storage ensures recorded files are accessible even if the device or memory card is lost.
- **Long Standby Battery:** Technical design with low power consumption allows continuous recording for 24 hours after charging, or over 60 days at low sensitivity settings.
- **2.4G WiFi Support:** This spy camera only supports 2.4G WiFi; 5G is not supported.



Figure 2: Key features of the javiscam 4K Mini Security Camera.

Video 1: Overview of the 2K Camera for Home Security, demonstrating its capabilities and features.



Figure 3: Illustration of the camera's internal 2800mAh rechargeable battery for extended use.

PIR Motion Detection

PIR Sensor with Human Detection 24 Hour Protection

AI Motion Detection

Automatic video recording

Alert via APP

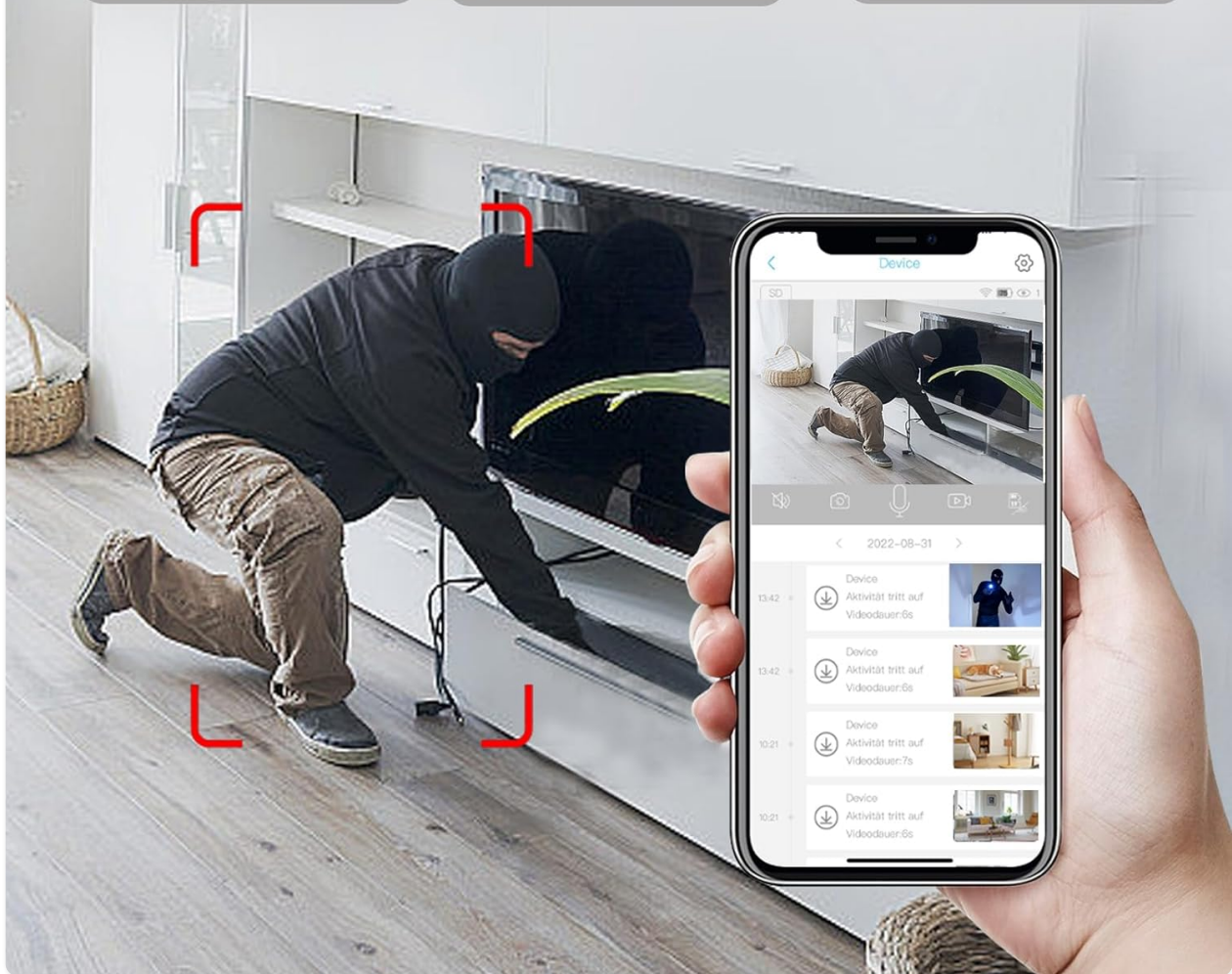
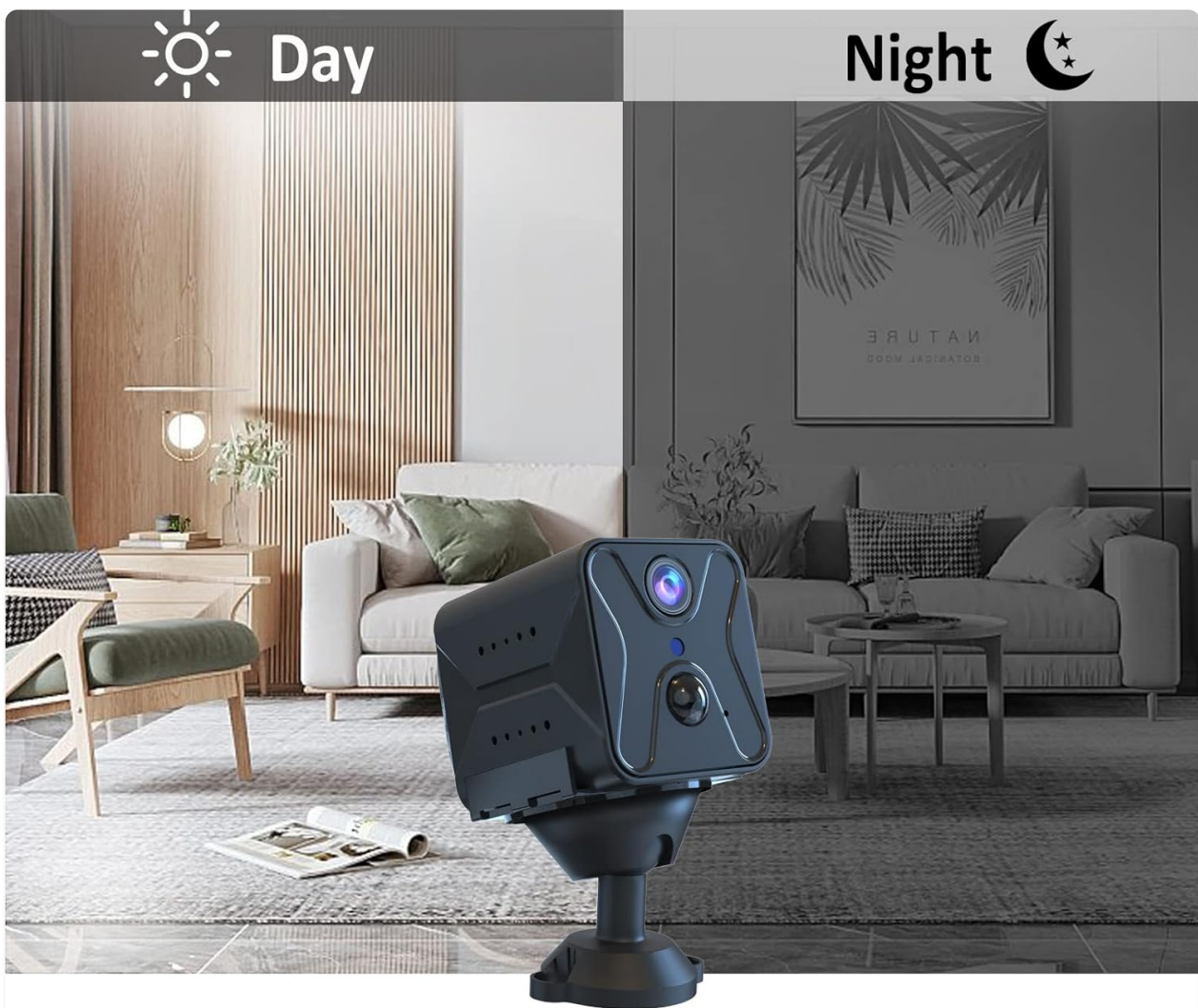


Figure 4: Demonstration of PIR Motion Detection with AI Analysis, triggering automatic video recording and app alerts.



Super Night Visison

With 6pcs infrar LEDs working without shine Help you see clearly in the dark

Figure 5: Day and Night vision capabilities, highlighting the camera's ability to see clearly in the dark using infrared LEDs.

WHAT'S INCLUDED

- 1x Smart Security Camera
- 1x Bracket
- 1x Screw bag
- 1x User Manual
- 1x Charging cable

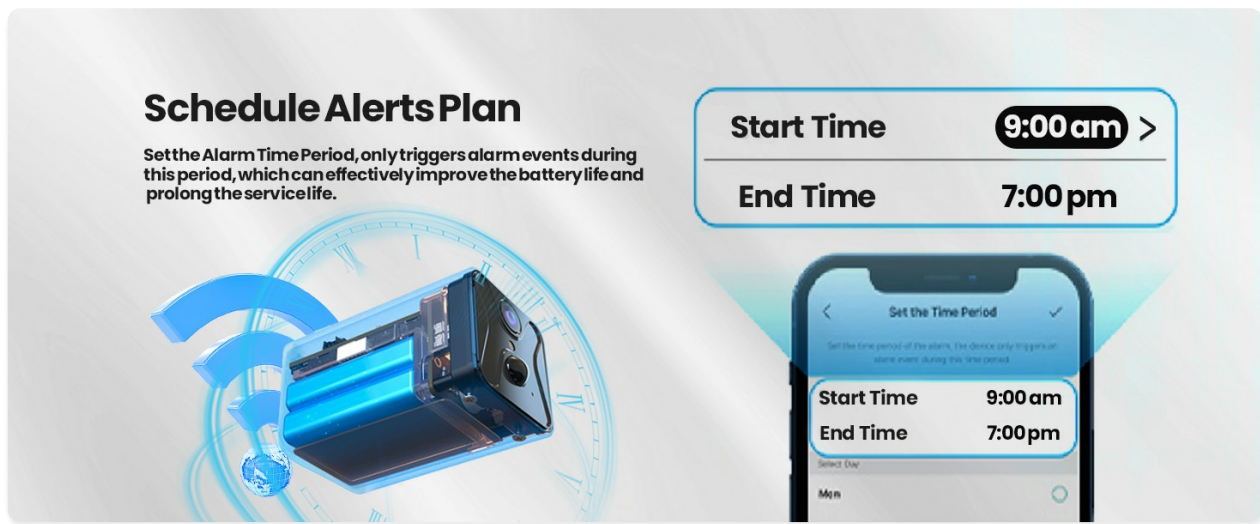


Figure 6: All components included in the javiscam 4K Mini Security Camera package.

SETUP GUIDE

1. **Charge the Camera:** Fully charge the camera using the provided USB charging cable before first use.
2. **Download the UBox App:** Scan the QR code in the user manual or search for "UBox" in your mobile app store (iOS/Android) to download and install the application.
3. **Connect to Wi-Fi:** Open the UBox app and follow the on-screen instructions to add your device. Ensure your phone is connected to a 2.4G Wi-Fi network, as the camera does not support 5G Wi-Fi.
4. **Mount the Camera:** Use the included bracket and screw bag to mount the camera in your desired location. The bracket allows for flexible positioning, including tabletop, wall, or ceiling mounting.
5. **Insert SD Card (Optional):** For local storage, insert a compatible Micro SD card (up to 128GB, not included) into the designated slot on the camera.



Figure 7: Download the UBox App to manage your camera.



Figure 8: Flexible installation options for the javiscam wireless security camera.



Figure 9: Steps to fully charge and connect your camera to a 2.4G Wi-Fi network.

OPERATING INSTRUCTIONS

Live View and Monitoring

Once connected, open the UBox app to access the live feed from your camera. You can view real-time video, take screenshots, and record video directly to your phone or the inserted SD card.



Figure 10: Accessing the live feed from your camera via the UBox app.

Motion Detection Settings

Configure motion detection sensitivity and schedule within the app's settings. You can choose between high, medium, or low sensitivity, and set specific times for motion detection to be active to conserve battery life.

30Tage Cloud & lokaler Speicher



Figure 11: Setting up a schedule for motion detection alerts to optimize battery usage.

Night Vision Mode

The camera automatically switches to infrared night vision in low-light conditions. You can also manually control this setting within the app if needed.

Cloud & SD Storage

Access recorded videos from either your inserted SD card or the cloud service (30-day free trial available for new customers). Ensure your data is safely protected with financial encryption.

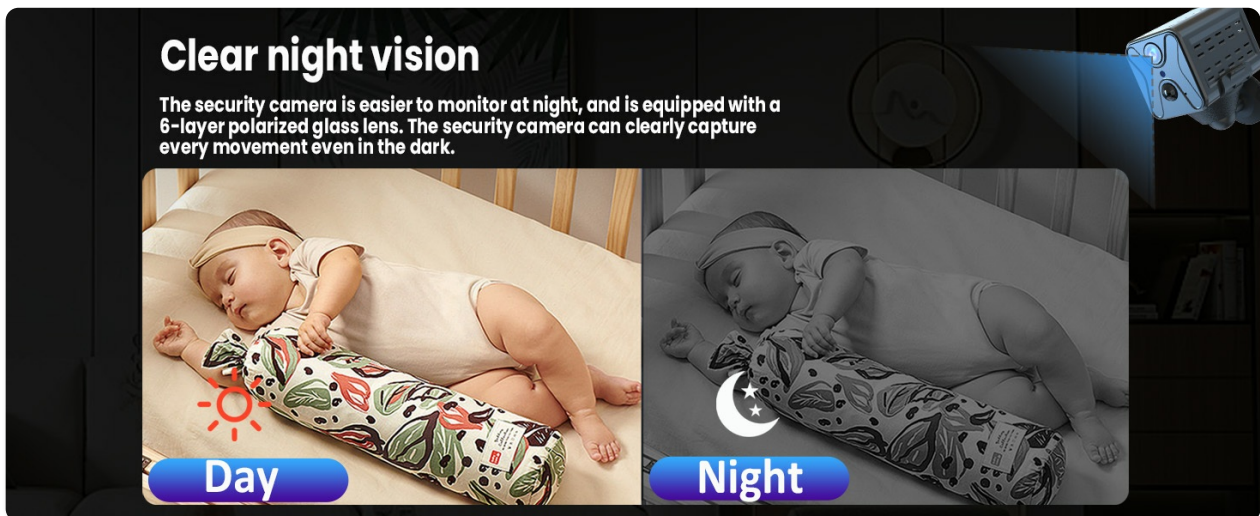


Figure 12: Cloud and local storage options for your recorded footage.

Two-Way Audio (Not Supported)

Please note that this model does not support two-way audio communication.

MAINTENANCE

- **Regular Charging:** Although the camera boasts a long standby time, regular charging is recommended to ensure continuous operation.
- **Clean the Lens:** Gently wipe the camera lens with a soft, dry cloth to maintain clear video quality.
- **Check Storage:** Periodically check your SD card storage or cloud service to ensure there is enough space for new recordings.

TROUBLESHOOTING

Issue	Possible Solution
Cannot connect to Wi-Fi	Ensure your Wi-Fi is 2.4G. The camera does not support 5G networks. Check Wi-Fi password and signal strength.
Motion detection not working	Check motion detection sensitivity settings in the app. Ensure the camera is within the detection range and not obstructed. Verify the schedule for active detection times.
Short battery life	Reduce motion detection sensitivity or adjust the detection schedule to conserve power. Ensure the camera is fully charged.
Poor video quality	Clean the camera lens. Ensure adequate lighting for optimal video. Check your internet connection speed for live streaming quality.

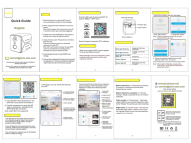




TECHNICAL SPECIFICATIONS

Specification	Value
Model Number	USB6
Video Capture Resolution	4K
Indoor/Outdoor Usage	Indoor
Power Source	Battery Powered
Battery Capacity	2800mAh
Wireless Communication Technology	Wi-Fi (2.4G only)
Storage Support	Cloud & SD Card (up to 128G)
Motion Detection	PIR with AI Analysis
Night Vision	Infrared
Dimensions (L x W x H)	1.5 x 2 x 1.4 inches
Item Weight	6.7 ounces
UPC	636144870409

WARRANTY AND SUPPORT

For any questions, technical support, or warranty inquiries regarding your javiscam 4K Mini Security Camera, please contact javiscam customer service. Refer to the contact information provided in your product packaging or on the official javiscam website.

Related Documents - USB6

	<p>JAVISCAM Quick Guide: Setting Up Your WiFi Security Camera</p> <p>This JAVISCAM Quick Guide provides essential steps for setting up your WiFi security camera, including downloading the UBox app, connecting to WiFi, understanding device indicators, installation tips, and configuring basic settings like motion detection and night vision.</p>
	<p>Javiscam Mini Camera User Manual and Setup Guide</p> <p>Comprehensive guide for setting up and using the Javiscam Mini Camera, covering Wi-Fi connection, motion detection, video storage options (cloud and Micro SD), app interface, troubleshooting, and device features. Compatible with the UBox app.</p>
	<p>Guía Rápida Cámara de Seguridad Inalámbrica Javiscam CB54</p> <p>Configura y utiliza tu cámara de seguridad inalámbrica Javiscam CB54 con esta guía rápida. Aprende sobre instalación, modos de funcionamiento, almacenamiento y más.</p>
	<p>Javiscam CB54 Wi-Fi Security Camera Quick Start Guide</p> <p>Get started with your Javiscam CB54 Wi-Fi security camera. This quick start guide provides essential setup instructions, working modes, video storage options, app usage, and safety guidelines.</p>
	<p>JarvisCam Mini Camera: Setup, Features, and Troubleshooting Guide</p> <p>Comprehensive guide for the JarvisCam Mini Camera, covering setup, Wi-Fi connection, storage options (Cloud, Micro SD), app usage, troubleshooting, and FCC compliance. Learn to install and operate your smart security camera.</p>