

JONR P20 Pro



JONR P20 Pro Robotic Vacuum Cleaner User Manual

Model: P20 Pro

1. PRODUCT OVERVIEW

The JONR P20 Pro is an advanced robotic vacuum cleaner designed to provide comprehensive and automated home cleaning. It features an all-in-one base station for automatic dust collection, mop cleaning, and hot air drying, ensuring a hands-free cleaning experience. With powerful suction and intelligent navigation, the P20 Pro is engineered for efficient cleaning of various floor types, including carpets.



Image: The JONR P20 Pro robotic vacuum cleaner alongside its all-in-one base station, with a mobile app interface displayed on the right.

Key Features:

- **Extendable Arm for Mopping:** The robotic mop arm can extend to reach corners and furniture edges, increasing edge coverage by 99% for thorough cleaning.
- **Fully Automatic Base Station:** An all-in-one station with 8000Pa suction, automatic dust collection, mop cleaning, and hot air drying. It includes a 3-liter dust bag, a 4-liter fresh water tank, and a 4-liter waste water tank.
- **Auto Mop Lifting:** Features dynamic pressurized rotary mopping and automatic carpet detection. The mop is intelligently lifted by 8mm when a carpet is detected, allowing for vacuuming without mopping the carpet.
- **Anti-tangle Roller Brush:** The P20 Pro's roller brush uses a cyclone deflector design to effectively prevent hair tangles, making it suitable for pet-owning households.
- **Customizable Cleaning via App:** Control cleaning schedules, build floor plans, divide rooms, plan paths, set no-go zones, and save multi-floor maps through the dedicated mobile application.
- **Connectivity:** Supports 2.4 GHz WiFi only. 5GHz WiFi is not supported.

2. SETUP GUIDE

2.1 Unpacking and Placement

1. Carefully remove all components from the packaging. Ensure all parts listed in the packing list are present.
2. Choose a suitable location for the all-in-one base station. It should be placed against a wall, with at least 0.5 meters (1.6 feet) of clear space on either side and 1.5 meters (4.9 feet) in front to allow the robot to dock easily.
3. Ensure the area around the base station is free from obstacles, power cords, or loose items that could obstruct the robot's return.
4. Connect the power cord to the base station and plug it into a wall outlet. Ensure the power indicator on the base station illuminates.

2.2 Initial Charging

- Place the JONR P20 Pro robot onto the charging contacts of the base station. Ensure the robot is properly aligned and the charging indicator on the robot lights up.
- Allow the robot to fully charge before its first use. This typically takes several hours. A full charge ensures optimal battery performance and mapping accuracy.

2.3 App Installation and Connection

1. Scan the QR code provided in the quick start guide or search for the "JONR" app in your mobile device's app store (Google Play Store for Android, Apple App Store for iOS).
2. Download and install the app.
3. Open the app and follow the on-screen instructions to create an account and add your JONR P20 Pro device.
4. During the connection process, ensure your mobile device is connected to a 2.4 GHz WiFi network. The P20 Pro does not support 5 GHz WiFi.
5. Once connected, the app will guide you through the initial setup, including mapping your home.

3. OPERATING INSTRUCTIONS

3.1 First-Time Mapping

- For the first cleaning cycle, allow the robot to complete a full mapping run without interruption. Clear any obstacles from the floor, such as loose cables, small rugs, or toys.
- The robot will use its laser navigation system to scan and create a detailed map of your home, which will be displayed in the app.
- Once the map is complete, you can use the app to define rooms, set no-go zones, and create virtual walls.

3.2 Starting a Cleaning Cycle

- **Via App:** Open the JONR app, select your device, and choose from options like "Auto Clean," "Zone Clean," or "Room Clean." You can also adjust suction power and mopping intensity.
- **Via Robot Button:** Press the power button on the robot once to start an automatic cleaning cycle. Press it again to pause.
- The robot will automatically return to the base station to empty its dustbin, clean its mop pads, and recharge as needed during or after a cleaning cycle.

3.3 Mopping Function

- Ensure the fresh water tank in the base station is filled with clean water. Do not add cleaning solutions unless specifically approved by JONR.
- The robot will automatically detect carpets and lift its mop pads by 8mm to avoid wetting them while vacuuming.

- The extendable mop arm ensures thorough cleaning along edges and in corners.

3.4 Scheduling Cleaning

- Use the JONR app to set up recurring cleaning schedules. You can specify days, times, and even specific rooms or zones to be cleaned.

4. MAINTENANCE

Regular maintenance is crucial for the optimal performance and longevity of your JONR P20 Pro. Always power off the robot and unplug the base station before performing any maintenance.

4.1 Base Station Maintenance

- **Dust Bag Replacement:** The 3-liter dust bag in the base station should be replaced when full. The app will notify you.
- **Water Tanks:** Regularly empty the waste water tank and refill the fresh water tank. Clean both tanks with clean water to prevent mold or odor buildup.
- **Mop Cleaning Tray:** Periodically clean the mop cleaning tray within the base station to remove any residue.

4.2 Robot Maintenance

- **Roller Brush:** Remove the main roller brush and clean any tangled hair or debris. The anti-tangle design minimizes this, but periodic checks are recommended.
- **Side Brushes:** Check side brushes for wear or damage. Replace if necessary. Remove any hair or debris wrapped around them.
- **Mop Pads:** Remove and wash the mop pads after each mopping session. They can be hand-washed or machine-washed according to care instructions.
- **Filter:** The sponge filter should be cleaned regularly by tapping out dust. Replace the filter every 3-6 months, depending on usage.
- **Sensors:** Wipe all sensors (cliff sensors, wall sensors, charging contacts) on the robot and base station with a clean, dry cloth to ensure proper function.

5. TROUBLESHOOTING

If you encounter issues with your JONR P20 Pro, please refer to the following common problems and solutions:

Problem	Possible Cause	Solution
Robot does not start or respond.	Low battery; Power switch off; Robot stuck.	Charge the robot; Ensure power switch is ON; Clear any obstructions.
Robot cannot return to base station.	Base station obstructed; Robot too far; Dirty charging contacts.	Clear area around base station; Manually place robot on station; Clean charging contacts on robot and station.
Poor cleaning performance.	Full dust bag; Clogged filter; Tangled brushes; Low water in tank.	Replace dust bag; Clean/replace filter; Clean roller and side brushes; Refill fresh water tank.

Problem	Possible Cause	Solution
App connection issues.	Incorrect WiFi band; Weak WiFi signal; App not updated.	Ensure connected to 2.4 GHz WiFi; Move robot closer to router; Update app to latest version.
Mop not lifting on carpet.	Carpet detection sensors dirty or obstructed.	Clean the carpet detection sensors on the underside of the robot.

For issues not listed here, please consult the JONR app for error messages or contact customer support.

6. SPECIFICATIONS

Brand	JONR
Model Number	P20 Pro
Color	White
Product Dimensions (L x W x H)	58.42 x 43.18 x 38.1 cm (23 x 17 x 15 inches)
Item Weight	14.1 kg (31.09 lbs)
Dust Bag Capacity	3 Liters
Fresh Water Tank Capacity	4 Liters
Waste Water Tank Capacity	4 Liters
Suction Power	8000 Pa
Battery Type	Lithium-ion
Voltage	14.0 V
Connectivity	2.4 GHz Wi-Fi (5 GHz not supported)
Filter Type	Sponge
Included Components	All-in-one base station, Robotic Vacuum, Mop pads, Roller brush, Side brushes

7. WARRANTY AND SUPPORT

JONR products are designed for reliability and performance. For warranty information and customer support, please refer to the warranty card included with your product or visit the official JONR website.

You can also find additional support, FAQs, and contact information through the JONR mobile application.

Note: Information regarding spare parts availability is currently unavailable.





[JONR P20 Pro Robotstøvsuger Instruktionsmanual](#)

Komplet instruktionsmanual for JONR P20 Pro robotstøvsuger med alt-i-en rengøringsstation. Indeholder sikkerhedstips, produktintroduktion, installation, brug, vedligeholdelse og fejlfinding.

lang:da score:36 filesize: 14.07 M page_count: 23 document date: 2024-12-19



[JONR P20 Pro Robot Aspiradora: Guía de Usuario Completa](#)

Guía detallada para el robot aspirador JONR P20 Pro con estación de limpieza todo en uno. Incluye instrucciones de instalación, operación, mantenimiento, solución de problemas y especificaciones técnicas para un uso óptimo.

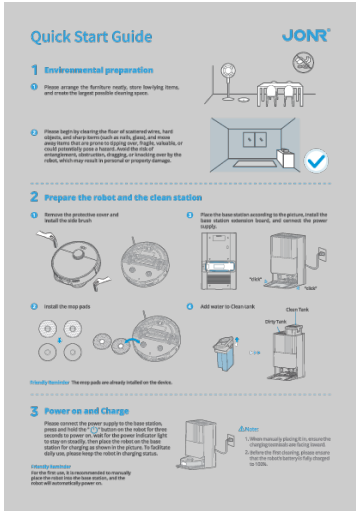
lang:es score:29 filesize: 1.9 M page_count: 26 document date: 2024-10-08



[JONR P20 Pro Robot Vacuum Cleaner with All-in-One Cleaning Station - User Manual](#)

This user manual provides comprehensive instructions for the JONR P20 Pro Robot Vacuum Cleaner. It covers setup, operation, maintenance, safety guidelines, and troubleshooting for the device and its All-in-One Cleaning Station.

lang:de score:25 filesize: 1.9 M page_count: 26 document date: 2024-10-08



[JONR Robot Vacuum Cleaner Quick Start Guide](#)

This guide provides essential steps for setting up and operating your JONR robot vacuum cleaner. Learn about environmental preparation, robot and station setup, power and charging, network configuration, button functions, and safety instructions.

lang:de score:17 filesize: 11.24 M page_count: 18 document date: 2024-06-28



[JONR P20 Pro Robot Vacuum User Manual](#)

Comprehensive user manual for the JONR P20 Pro Robot Vacuum with All-in-One Station, covering setup, operation, maintenance, and troubleshooting.

lang:de score:12 filesize: 8.69 M page_count: 24 document date: 2025-05-24