

TCL 75A300W

TCL NXTVISION Series QLED 4K UHD Google Smart TV User Manual

Model: 75A300W

Brand: TCL

INTRODUCTION

This manual provides essential information for setting up, operating, and maintaining your TCL 75-Inch Class NXTVISION Series QLED 4K UHD Google Smart TV. Please read through these instructions carefully to ensure optimal performance and longevity of your television.

The TCL NXTVISION TV is designed to offer a premium viewing experience with advanced picture technologies and versatile display options, including an Art Mode that transforms your TV into a digital art canvas.

SETUP

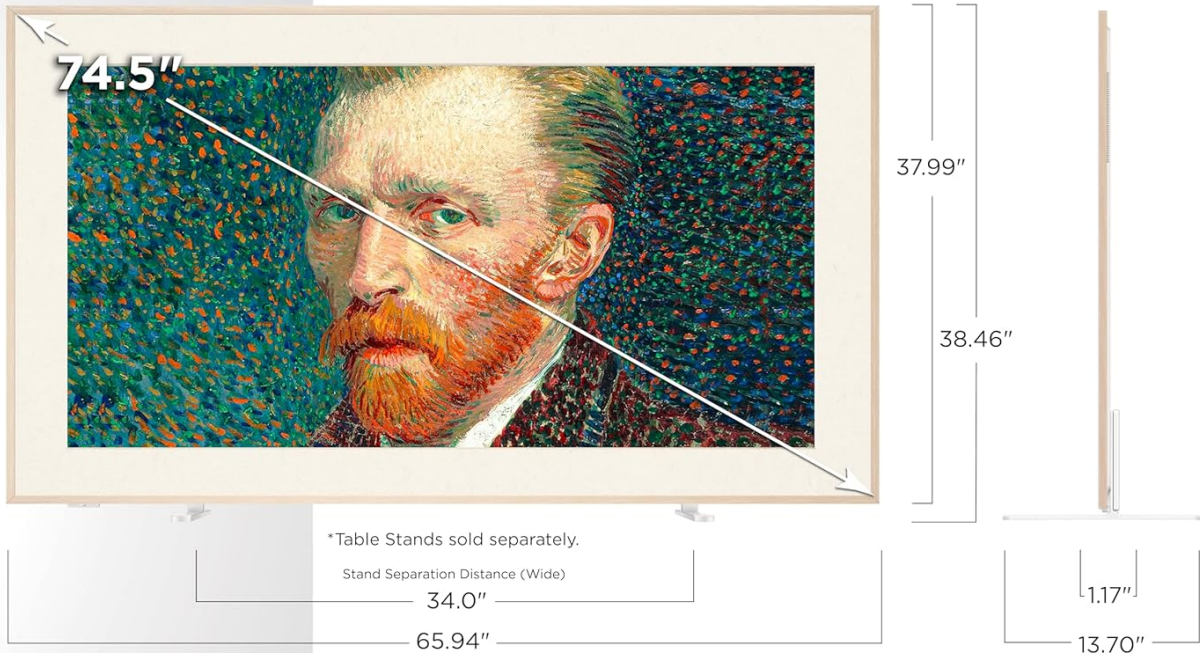
1. Unboxing and Inspection

Carefully remove the television and all accessories from the packaging. It is recommended to have at least two people for handling the TV due to its size and weight. Inspect all components for any signs of damage. If any damage is found, do not proceed with setup and contact customer support.

TCL

75" Class NXTVISION TV

Model:
75A300W



Dimensions:

TV with Stand:
65.94" x 38.46" x 13.70"
TV without Stand:
65.94" x 37.99" x 1.17"

What's in the Box:

- TCL NXTVISION TV with Google TV
- Flush Wall Mount Bracket
- Light Wood Color Frame + Screws
- Power Cable
- TV Remote + Batteries
- Quick Start Guide

*NXTVISION TV shown with light wood frame; product bezel color is off-white.
*Features and specifications subject to change.
*Remote preset buttons can vary by region.

Image: The packaging of the TCL NXTVISION TV, showing the TV dimensions and a list of included items such as the TV, flush wall mount, light wood color frame, power cable, remote control, stand, and user manual. This image illustrates the contents and size specifications for the 75-inch model.

2. Mounting Options

Your TCL NXTVISION TV comes with an included flush wall mount for a seamless, art-like appearance. Optional easel-style movable stands and table stands are available separately if wall mounting is not desired.

Wall Mounting (Included Flush Mount)

The specially designed ultra-thin wall mount holds the NXTVISION TV tight to the wall, creating an elegant, gallery-style look. This mount is not compatible with standard VESA mounts.

1. **Prepare the Wall:** Ensure the wall is structurally sound and capable of supporting the TV's weight. Use a stud finder to locate wall studs for secure mounting.
2. **Attach Mounting Brackets to TV:** Secure the provided mounting brackets to the back of the TV using the screws included in the hardware kit.
3. **Install Wall Plate:** Use the provided template to mark the drilling points on your wall. Drill pilot holes and secure the wall plate firmly to the wall using the appropriate anchors and screws.

4. **Mount the TV:** Carefully lift the TV and hook the TV brackets onto the wall plate. Ensure the TV is securely seated and level.

Display It Your Way

One TV. Endless ways to express your style.

Included Seamless Wall Mount



Table Feet
(Sold Separately)



Moveable Floor Stand
(Sold Separately)

Image: This image displays the TCL NXTVISION TV in three different setups: flush wall-mounted, on optional table feet, and on an optional movable floor stand. It highlights the versatility of display options for the TV.

3. Connecting Cables

Connect your power cable, HDMI devices (such as cable boxes, gaming consoles, or Blu-ray players), and any other necessary peripherals to the appropriate ports on the TV. Ensure all connections are secure.

4. Frame Installation

The TV includes a light wood color magnetic frame that can be easily attached to the TV's off-white bezel. Align the magnetic frame pieces with the edges of the TV and they will snap into place. This allows for quick customization of the TV's appearance.

Style that changes with you

Off-white bezel. Light wood frame included. Style it your way — no tools, no hassle.



Image: A detailed view of the TCL NXTVISION TV's off-white bezel and the included light wood magnetic frame. The image demonstrates how the frame can be easily attached to change the TV's aesthetic, emphasizing the tool-free installation.

OPERATING YOUR TV

1. Initial Power On and Google TV Setup

After connecting the power cable, press the power button on the remote control. Follow the on-screen instructions to complete the initial setup, including connecting to your Wi-Fi network and logging into your Google account. This will enable access to Google TV features and apps.

Google TV + Voice Remote

Just say it. Stream it. Everything you love, made easy.

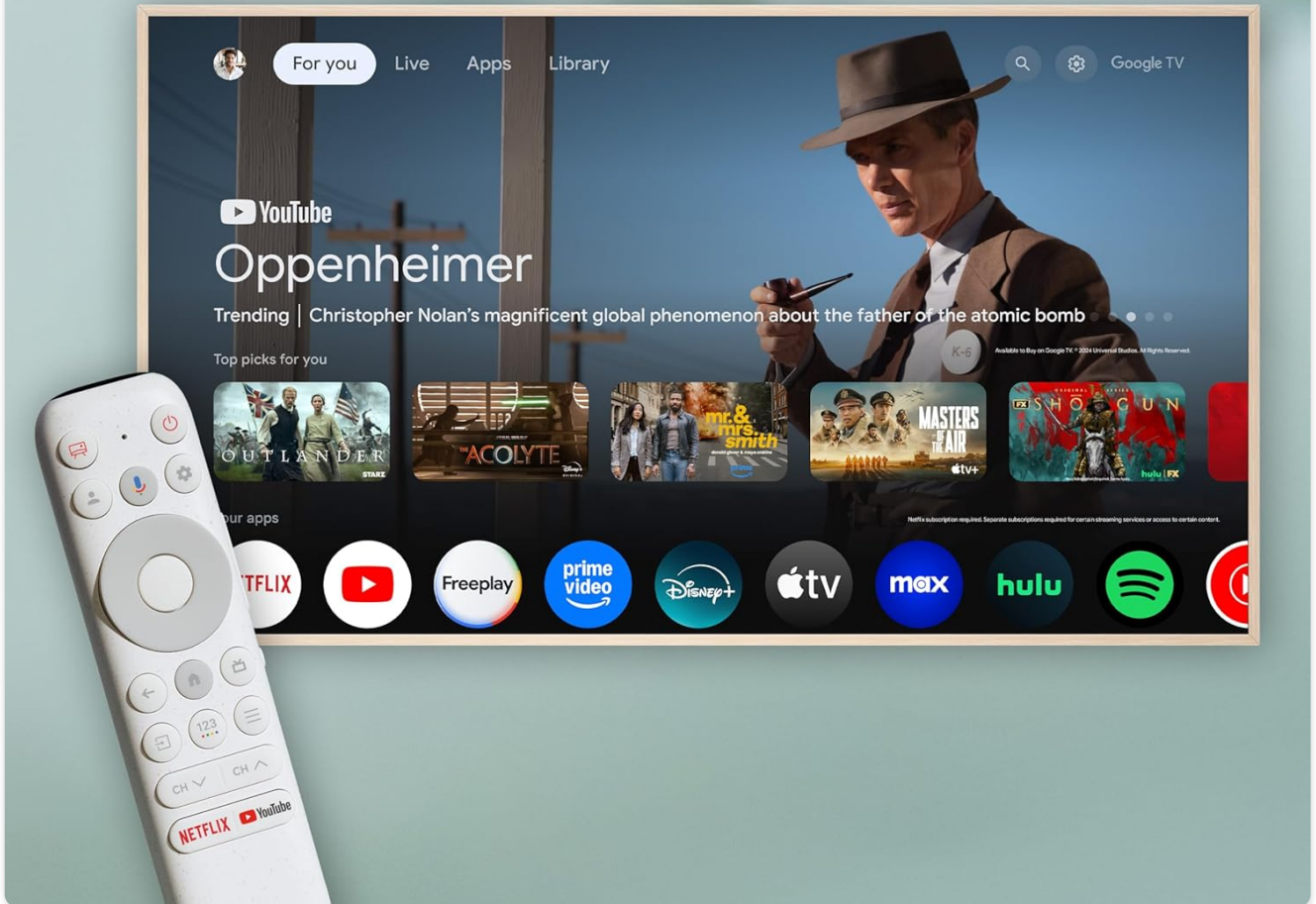


Image: The TCL NXTVISION TV screen showing the Google TV interface, which provides instant access to streaming services and content. A voice remote is also visible, indicating hands-free control capabilities.

2. Art Mode and Art Library

The NXTVISION TV features an Art Mode that allows it to display artwork when not in use as a traditional television. Access the curated Art Library, which includes over 350 free artworks, or utilize the AI Art capability to generate unique pieces. You can also display your personal photo collection.

350+ Free Artworks.

No Fees. All You.

Customize your art, your matting,
your collection — and make your
TV your own.

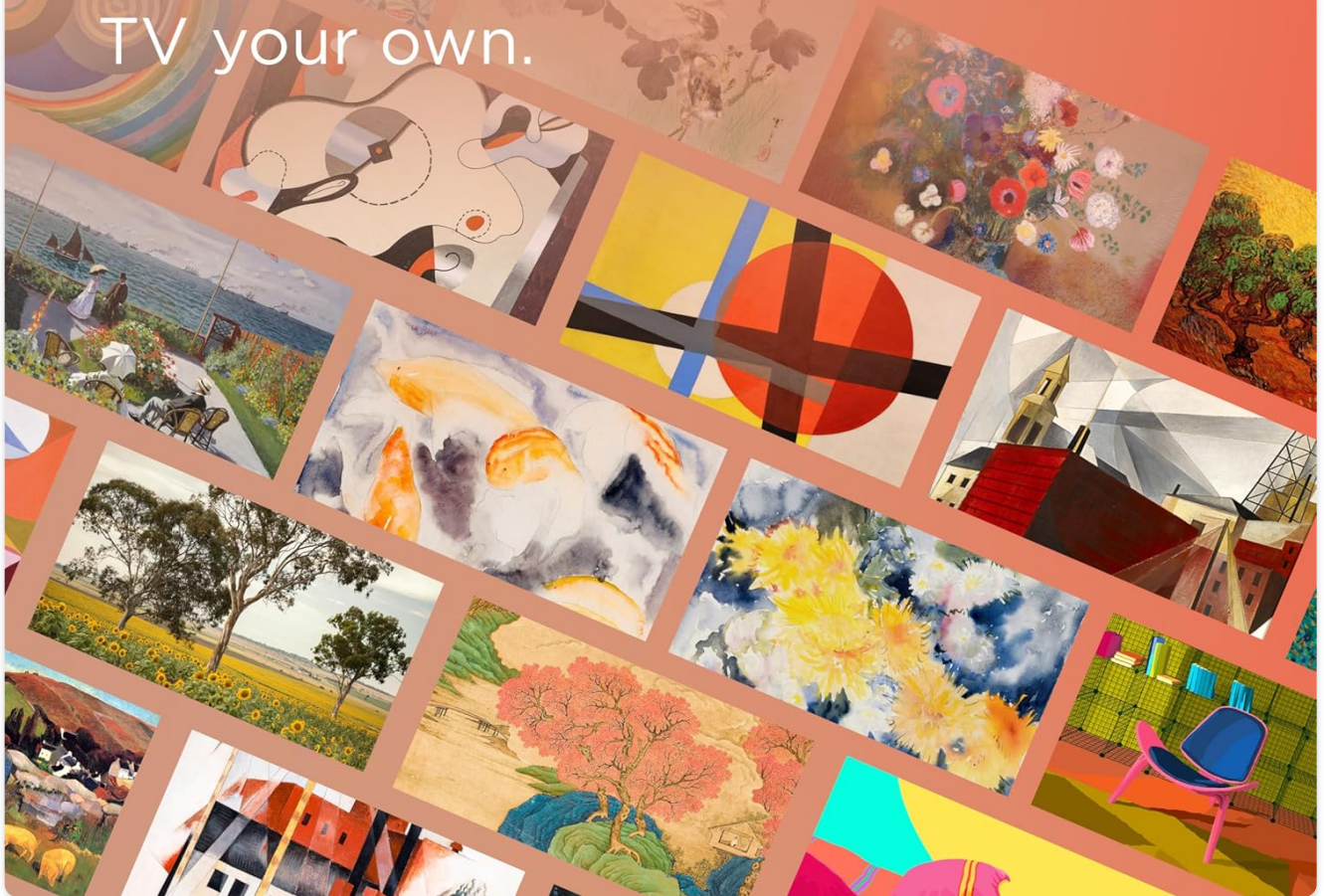


Image: A vibrant display of numerous artworks, illustrating the extensive library of over 350 free artworks available on the TCL NXTVISION TV. This feature allows users to customize their art display, matting, and collection.

100k+ Ai artworks included
Inspired by greats. Customized for you. No subscription required.

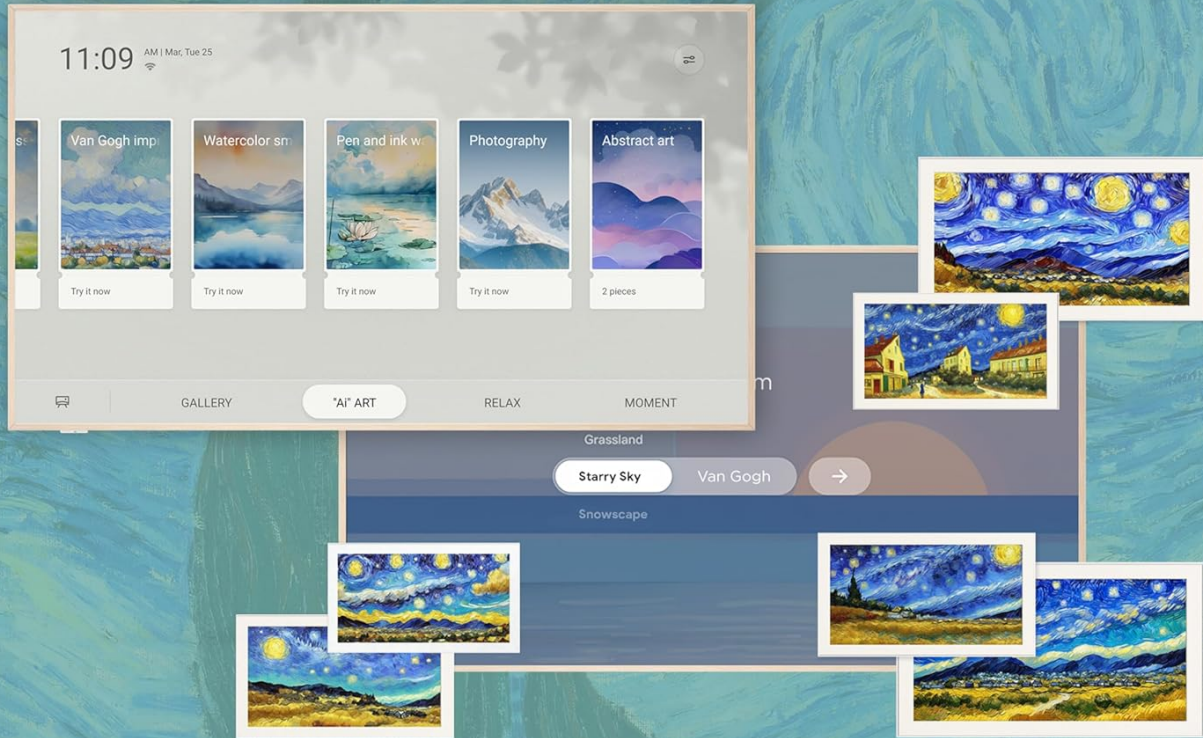


Image: The TCL NXTVISION TV interface showcasing options for AI art, with examples of AI-generated artworks inspired by famous styles. This feature provides access to over 100,000 free AI artworks without a subscription.

3. Picture Quality Features

- **QLED PRO Quantum Dot Technology:** Experience ultra-rich, accurate colors and lifelike clarity.
- **HDR ULTRA with Dolby Vision IQ:** Provides enhanced contrast, accurate colors, and fine details for a superior viewing experience.
- **4K UHD Resolution:** Enjoy stunning 4K Ultra HD resolution, offering four times the detail of Full HD.
- **High Brightness+ LED Backlight:** Produces brighter images for enhanced viewing, even in well-lit rooms, while maintaining shadow detail.
- **120Hz Refresh Rate:** Ensures smooth motion for fast-paced content like sports, action movies, and gaming, reducing blur.
- **Ultra Matte Anti-Glare Screen:** Features a highly matte anti-reflective screen that minimizes reflections, providing an authentic art-like view in any lighting condition.

Ultra-Matte, ultra real art

Anti-glare screen for an authentic art-like view — anytime, anywhere.

Conventional Screen

TCL NXTVISION
Matte Screen



Image: A side-by-side comparison demonstrating the effectiveness of the Ultra Matte Anti-Glare Screen on the TCL NXTVISION TV versus a conventional screen. The matte screen significantly reduces reflections, providing a clearer, more authentic art-like view.

4. Gaming Features

For gamers, the NXTVISION TV offers Game Accelerator 240 and Auto Game Mode, providing low latency for responsive gameplay without lag. AMD FreeSync Premium further enhances the experience by eliminating screen tearing and stuttering.

5. Audio Features

The TV includes Dolby Atmos and DTS Virtual:X for an immersive audio experience. Dolby Atmos fills the room with spatial audio, making sound move all around you. Enhanced Dialogue Mode boosts speech clarity, cutting through background noise for sharper voices.

6. Smart Features and Connectivity

With Google TV, you have access to a wide range of streaming apps. The built-in voice remote allows for easy navigation and content search. The TV also supports built-in Google Chromecast for streaming directly from your phone, tablet, or computer. It is compatible with Amazon Alexa, Google Assistant, and Apple HomeKit for seamless

integration into your smart home setup.

MAINTENANCE

1. Screen Cleaning

To clean the matte anti-glare screen, gently wipe it with a soft, lint-free cloth. For stubborn marks, slightly dampen the cloth with water or a screen-specific cleaning solution. Avoid using harsh chemicals, abrasive materials, or excessive pressure, as these can damage the screen surface.

2. Frame Care

The light wood magnetic frame can be cleaned with a dry, soft cloth. If necessary, a slightly damp cloth can be used, but ensure the frame is completely dry before reattaching it to the TV.

3. General Care

Keep the TV in a well-ventilated area, away from direct sunlight, heat sources, and excessive dust. Regularly dust the back of the TV and vents to prevent overheating. Ensure cables are neatly organized and not under strain.

TROUBLESHOOTING

If you encounter issues with your TCL NXTVISION TV, please refer to the following common solutions before contacting customer support.

Problem	Possible Cause	Solution
No Power	Power cable disconnected; outlet issue.	Ensure power cable is securely plugged into the TV and a working electrical outlet. Try a different outlet.
No Picture/Sound	Incorrect input source; loose HDMI cable.	Verify the correct input source is selected. Check HDMI cable connections. Restart connected devices.
Remote Not Responding	Dead batteries; obstruction.	Replace batteries in the remote control. Ensure no obstructions between the remote and the TV's IR sensor.
Wi-Fi Connectivity Issues	Router issue; incorrect password.	Restart your Wi-Fi router. Re-enter the Wi-Fi password carefully. Ensure the TV is within range of the router.

SPECIFICATIONS

Feature	Detail
Brand	TCL
Model Number	75A300W
Screen Size	75 Inches
Display Technology	4K UHD, Enhanced QLED, QLED
Resolution	4K
Refresh Rate	120 Hz
Special Features	120hz Refresh Rate, Dolby Atmos, Google TV, Matte-Anti Glare Screen
Included Components	Power Cable, Remote Control, Stand, User Manual, Wall Bracket
Connectivity Technology	Ethernet, HDMI, RF, USB, Wi-Fi
Product Dimensions	1.17"D x 65.94"W x 37.99"H
Item Weight	70.55 Pounds
Color Name	off-white
Batteries	2 AAA batteries required. (included)

WARRANTY AND SUPPORT

Warranty Information

Your TCL NXTVISION TV comes with a standard manufacturer's warranty. For specific details regarding the warranty period and coverage, please refer to the warranty card included in your product packaging or visit the official TCL support website. Extended protection plans are also available for purchase to provide additional coverage beyond the standard warranty.

Customer Support

For technical assistance, troubleshooting not covered in this manual, or service inquiries, please contact TCL Customer Support. You can find contact information on the official TCL website or in the documentation provided with your TV.

Additionally, a 30-day easy return policy is available for eligible purchases. Please refer to your retailer's return policy for details.

