

Manuals+

[Q & A](#) | [Deep Search](#) | [Upload](#)

manuals.plus /

> [cotsoco](#) /

> [cotsoco Electric Scalp Head Massager BL860 User Manual](#)

cotsoco BL860

cotsoco Electric Scalp Head Massager BL860 User Manual

Model: BL860

1. SAFETY INFORMATION

For safe operation of your cotsoco Electric Scalp Head Massager, please observe the following guidelines:

- Do not use the massager while sleeping or bathing.
- Keep the massager away from water when not in use to prevent damage.
- Do not insert hands or any objects into the massage heads during operation.
- Always follow the instructions provided in this user manual for proper and safe use.

2. PRODUCT OVERVIEW

The cotsoco Electric Scalp Head Massager BL860 is designed for scalp and body massage, featuring 4 massage heads with 28 individual 3D deep-kneading nodes. These nodes are designed to simulate hand massage, promoting circulation and providing a relaxing experience.



Smart Scalp Massager

Give you a relaxing experience



Kneading



Rechargeable



Waterproof



Soft silicone



Image: The cotsoco Smart Scalp Massager highlighting its kneading, rechargeable, waterproof, and soft silicone features.

Key Features:

- **Deep Scalp Massage:** Four massager heads with 28 individual 3D deep-kneading nodes for comprehensive scalp coverage.
- **Rechargeable and Cordless:** Offers freedom of movement without an attached power cord. A full charge provides approximately two hours of massage time.
- **Wet and Dry Use:** Constructed with IPX7 waterproof material, allowing for use in the shower or bath.
- **Ergonomic Design:** Features a custom-designed body with 28 contactors that fit the scalp and body contours, ensuring comfortable handling and use.
- **Simple Operation:** One-button control for easy startup and mode selection, with a 10-minute intelligent timing function for automatic shutdown.
- **Versatile Application:** Suitable for massaging the head, neck, shoulders, and other body parts.

3. WHAT'S IN THE BOX

Upon unpacking, please ensure all items listed below are present:

- cotsoco Electric Scalp Head Massager (BL860)
- Charging Base
- USB Charging Cable
- Replacement Massage Heads (4 pieces)
- User Manual

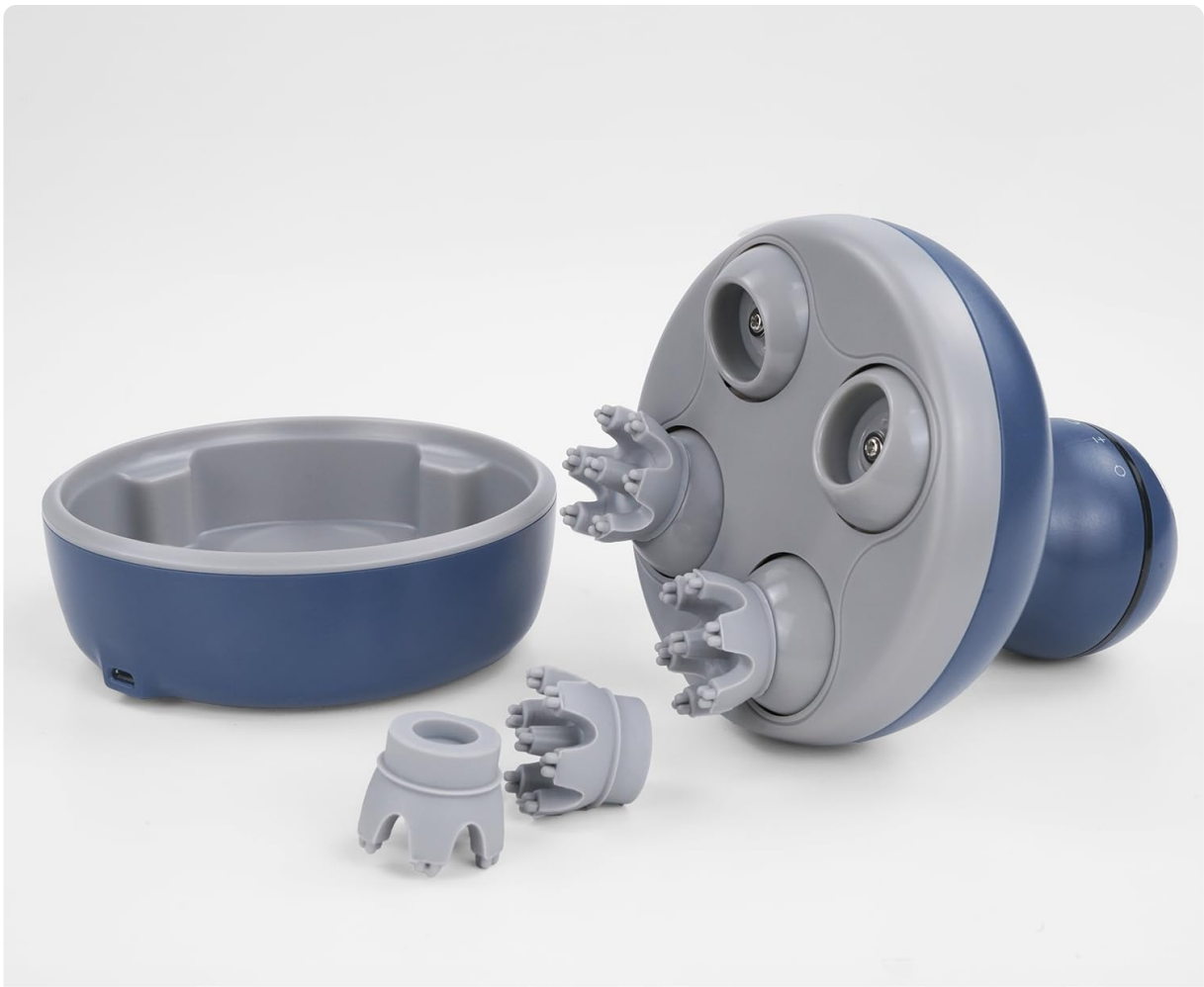


Image: The complete package contents of the cotsoco Scalp Massager.

4. SETUP AND CHARGING

4.1 Initial Setup

Before first use, ensure the massage heads are securely attached to the main unit. The massager comes with pre-installed heads, and additional replacement heads are provided.



THE MASSAGE HEADS ARE DETACHABLE AND REPLACEABLE, MAKING THEM EASY TO CLEAN

Image: The massager with detachable heads, illustrating how they can be removed for cleaning or replacement.

4.2 Charging the Massager

The massager is equipped with a rechargeable battery. It can be charged using the provided USB cable and charging base.

1. Connect the USB charging cable to the charging base and a suitable power source (e.g., USB adapter, computer USB port).
2. Place the massager onto the charging base, ensuring the contact points on the massager align with those on the base.
3. A green light indicator on the massager will illuminate to confirm it is charging.
4. A full charge typically provides approximately two hours of operation.

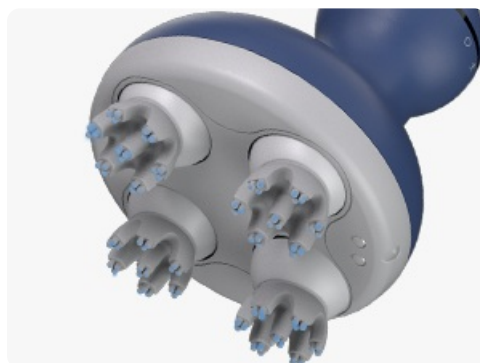


Image: The massager placed on its charging base, connected via USB cable.

Your browser does not support the video tag.

Video: Demonstrates the charging process of the cotsoco Electric Scalp Head Massager, showing how to connect the USB cable to the base and place the massager for charging.

5. OPERATING INSTRUCTIONS

The massager features a simple one-button control for ease of use.

5.1 Power On/Off and Mode Selection

1. **To Power On:** Press and hold the power button located on the top of the massager for a few seconds until the massage heads begin to rotate.
2. **To Change Modes:** Briefly press the power button to cycle through the available massage modes. The massager offers four modes:
 - Mode 1: Low speed, clockwise rotation.
 - Mode 2: High speed, clockwise rotation.
 - Mode 3: Low speed, counter-clockwise rotation.
 - Mode 4: High speed, counter-clockwise rotation.
3. **To Power Off:** Press and hold the power button for a few seconds until the massage heads stop rotating. The device also features a 10-minute intelligent timing function, automatically shutting off after 10 minutes of continuous use.



Image: Close-up of the power button for operating the massager.



Image: Depiction of the four rotating massage heads in action.

5.2 Usage Guidelines

- **Scalp Massage:** Gently place the massager on your scalp and move it slowly across different areas. The

3D kneading nodes are designed to provide a deep, relaxing massage.

- **Wet Use:** The IPX7 waterproof design allows for use in the shower with shampoo to help clean the scalp and distribute product.
- **Body Massage:** The massager can also be used on other body parts such as the neck, shoulders, arms, and calves for general relaxation.



Image: Demonstrates the versatility of the massager for use on various body parts, including the head, neck, shoulders, and arms.

6. MAINTENANCE AND CLEANING

Regular cleaning ensures hygiene and extends the lifespan of your massager.

1. **Detaching Massage Heads:** The massage heads are detachable. Gently pull each head upwards to remove it from the main unit.
2. **Cleaning:** Wash the detached massage heads with water and mild soap. The main unit can be wiped clean with a damp cloth. Ensure all parts are dry before reassembling or charging.
3. **Reassembly:** Align the massage heads with their respective slots on the main unit and press down firmly until they click into place.



Image: The massager's detachable heads being rinsed under water, demonstrating its waterproof feature and ease of cleaning.

7. TROUBLESHOOTING

If you encounter any issues with your massager, please refer to the following common solutions:

| Problem | Possible Cause | Solution |
|---|--|---|
| Massager does not turn on. | Low battery or not charged. | Charge the massager fully using the provided charging base and USB cable. Ensure the charging indicator light is on. |
| Massage heads stop rotating during use. | Battery is low or 10-minute auto-shutdown activated. | Recharge the massager. If it's due to auto-shutdown, simply restart the device by pressing the power button. |
| Massager does not charge. | Improper connection or faulty cable/base. | Ensure the USB cable is securely connected to both the power source and the charging base. Verify the massager is correctly placed on the base with aligned contact points. Try a different USB port or adapter if available. |
| Massage heads are not moving smoothly. | Hair or debris caught in the mechanism. | Turn off the massager, detach the massage heads, and clean any trapped hair or debris. Reattach securely. |

If the problem persists, please contact customer support for further assistance.

8. SPECIFICATIONS

| | |
|---------------------------|---|
| Model Number | BL860 |
| Brand | cotsoco |
| Product Dimensions | 4.05 x 5.5 x 4.05 inches |
| Item Weight | 0.89 Pounds (14.24 ounces) |
| Material | Plastic (with soft silicone massage heads) |
| Power Source | Battery Powered (1 AA battery included) |
| Waterproof Rating | IPX7 |
| Massage Modes | 4 (low/high speed, clockwise/counter-clockwise) |
| Auto-Off Timer | 10 minutes |

9. WARRANTY AND SUPPORT

cotsoco is committed to providing quality products and customer satisfaction.

- **Return Policy:** This product is eligible for a 30-day refund/replacement policy.
- **Customer Service:** For any inquiries or support, please contact cotsoco customer service.

-  **2 Year Warranties**
-  **90-Days Free Return**
-  **24H Vip Customer Service**

Image: cotsoco's commitment to customer support, including warranty and return information.