

TaoHFE CT--CST004

TaoHFE Console Table with Storage and Doors (Model CT--CST004) User Manual

Your guide to assembly, usage, and care.

1. INTRODUCTION

Thank you for choosing the TaoHFE Console Table with Storage and Doors. This manual provides essential information for the safe assembly, proper use, and maintenance of your new furniture. Please read these instructions carefully before beginning assembly and retain them for future reference.

1.1 Safety Information

- **Anti-Tipping Kit:** Always install the included anti-tipping kit to prevent accidental tipping and ensure stability, especially in households with children.
- **Water Contact:** Avoid direct water contact during cleaning to prevent damage to the wood material.
- **Assembly:** Assembly should ideally be performed by two persons to ensure safety and ease.
- **Tools:** A screwdriver is recommended for assembly.

2. PACKAGE CONTENTS

Please verify that all components listed below are present before starting assembly. If any parts are missing or damaged, please contact customer support.

- Table Top Panel
- Side Panels (Left and Right)
- Bottom Shelf Panel
- Back Panel
- Door Panels (x2)
- Inner Shelf Panel
- Legs/Support Slats
- Hardware Pack (screws, dowels, hinges, handles, anti-tipping kit)

3. ASSEMBLY INSTRUCTIONS

Follow these steps carefully for proper assembly. It is recommended to have two people for this process. A screwdriver is the primary tool required.

3.1 Step-by-Step Assembly

1. **Unpack and Identify Parts:** Lay out all components on a clean, soft surface to prevent scratches. Identify each part using the provided labels or diagrams.
2. **Assemble the Frame:** Attach the side panels to the bottom shelf and the main support structure using the designated hardware. Ensure all connections are secure.
3. **Install Inner Shelf:** Insert the inner shelf into its designated slots or attach with hardware as instructed.
4. **Attach Table Top:** Secure the table top panel to the assembled frame.
5. **Mount Doors:** Attach the hinges to the door panels and then to the main frame. Adjust hinges as needed for proper door alignment.
6. **Install Handles:** Secure the golden flake handles to the door panels.
7. **Install Anti-Tipping Kit:** Securely attach the anti-tipping kit to the back of the console table and to a wall stud, following the specific instructions provided with the kit. This is a critical safety step.

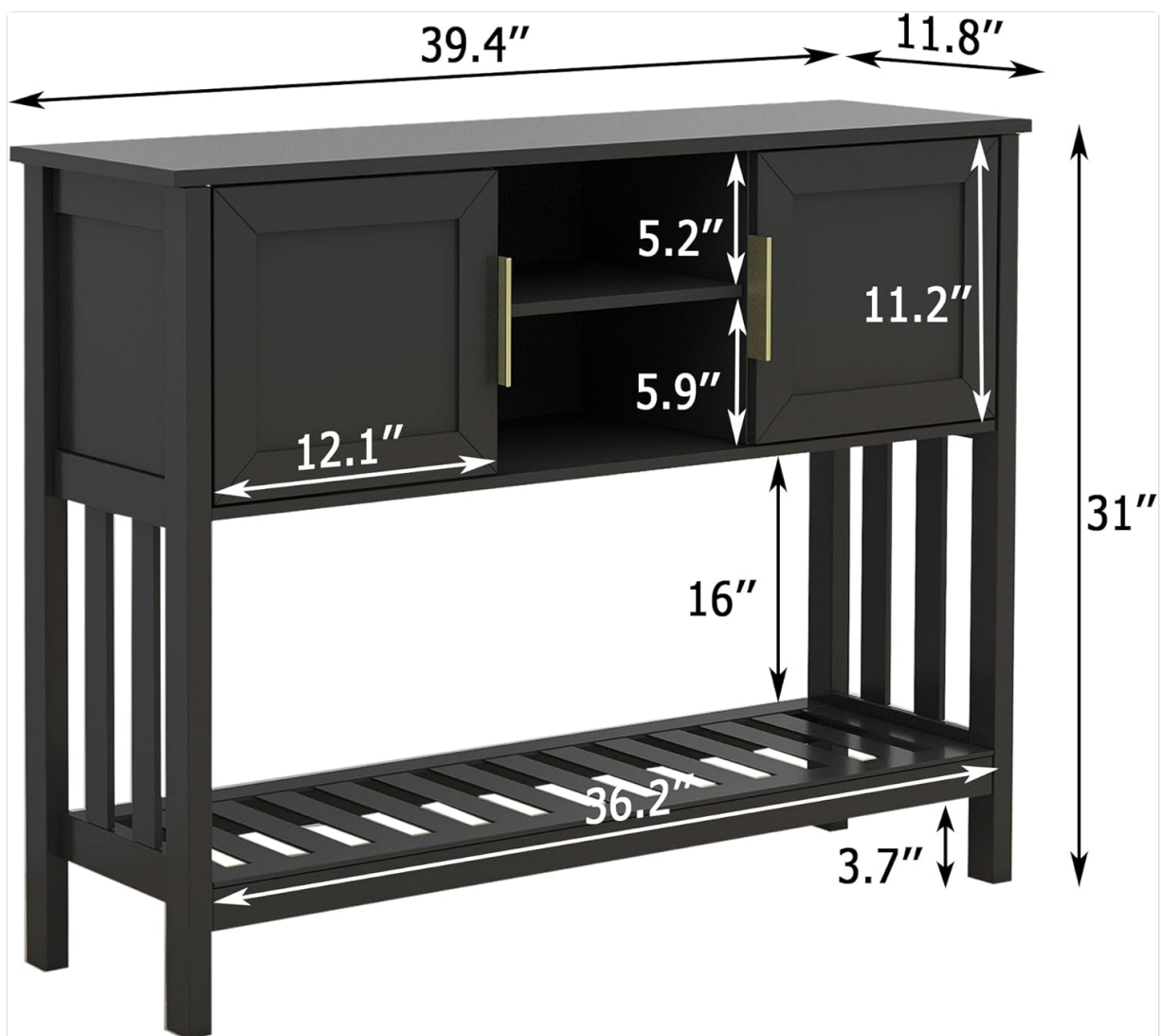
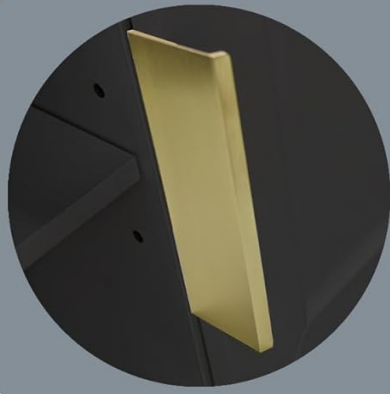


Figure 1: Product Dimensions. Refer to this diagram for overall and internal measurements during assembly.

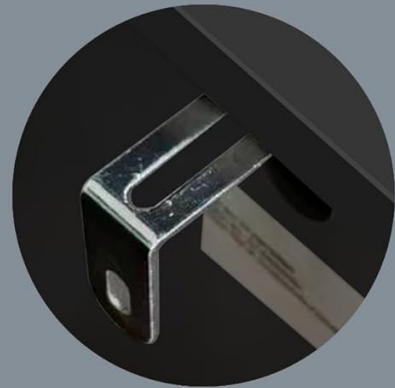


Golden Sheet Handles

Simpler and smoother

Anti-dumping kit

Safer and more stable



Modern exterior design

Add fashion to living room

Figure 2: Key Features. Details of the golden handles, anti-tipping kit, and modern design elements.

4. USAGE GUIDELINES

The TaoHFE Console Table is designed for versatile use in various home settings, offering both display and storage solutions.

4.1 Placement and Functionality

- **Entryway:** Ideal for holding keys, mail, and decorative items. The enclosed cabinets can store personal belongings out of sight.
- **Living Room/Sofa Table:** Can be placed behind a sofa or against a wall to display decor, lamps, or store media accessories.
- **Dining Room:** Suitable for serving dishes, storing linens, or displaying dining room accents.
- **Storage:** Utilize the two cabinets and the open shelf for organizing books, files, toys, plants, or other sundries.



Figure 3: Console Table in use, showcasing its design and top surface for display.



Figure 4: Internal Storage. The console table offers enclosed and open storage options.



Figure 5: Storage Versatility. Examples of items suitable for storage within the console table.

5. CARE AND MAINTENANCE

Proper care will help maintain the appearance and longevity of your console table.

- **Cleaning:** Wipe surfaces with a soft, damp cloth. Avoid using abrasive cleaners, harsh chemicals, or excessive moisture, as these can damage the finish.
- **Spills:** Clean spills immediately with a dry cloth to prevent staining or water damage.
- **Sunlight:** Avoid prolonged exposure to direct sunlight to prevent fading or discoloration.
- **Heat:** Do not place hot items directly on the surface. Use coasters or protective pads.
- **Inspection:** Periodically check all screws and connections to ensure they remain tight. Retighten if necessary.

6. TROUBLESHOOTING

If you encounter any issues with your console table, refer to the following common solutions:

- **Wobbling:** Ensure all screws are tightened evenly. Check that the table is placed on a level surface. If the floor is uneven, use furniture pads under the legs to stabilize.

- **Doors Not Aligning:** Adjust the hinges on the doors. Most furniture hinges allow for minor adjustments to align doors horizontally, vertically, and in depth. Refer to the hinge manufacturer's instructions if specific adjustments are needed.
- **Missing Parts:** If any parts were missing upon delivery, contact TaoHFE customer service with your purchase details.
- **Difficulty Assembling:** Review the assembly instructions carefully. Ensure all parts are oriented correctly. Sometimes, parts may appear similar but have subtle differences.

7. PRODUCT SPECIFICATIONS

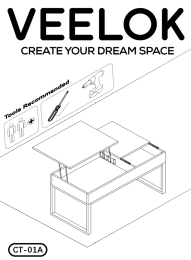



Feature	Specification
Brand	TaoHFE
Model Number	CT--CST004
Product Dimensions (D x W x H)	11.8"D x 39.4"W x 31"H
Color	Black
Material	Engineered Wood (Frame, Top, Base)
Handle Material	Metal (Gold finish)
Number of Doors	2
Recommended Uses	Entryway, Living Room, Dining Room, Hallway
Style	Modern
Indoor/Outdoor Usage	Indoor
Included Components	Assembly Guide

8. WARRANTY AND SUPPORT

TaoHFE stands behind the quality of its products. While specific warranty details may vary by retailer and region, we are committed to providing support for our customers.

8.1 Customer Support

If you have any questions regarding assembly, missing parts, or product functionality, please contact TaoHFE customer service. Refer to your purchase documentation or the retailer's website for contact information.

 <p>VEELOK CREATE YOUR DREAM SPACE</p> <p>Tools Recommended</p> <p>CT-01A</p>	<p>VEELOK CT-01A Lift Top Coffee Table Assembly Instructions</p> <p>Comprehensive assembly guide for the VEELOK CT-01A Lift Top Coffee Table, detailing parts, hardware, safety precautions, and step-by-step instructions for building your dream space.</p>
 <p>Installation Instructions</p> <p>Notes: Don't tighten screws excessively. If the panel or other parts were damaged during use, please disassemble. Tighten screws at last when all parts are put together.</p> <p>14</p>	<p>Tribesigns Cassey 70.9-inch Conference Table Installation Guide</p> <p>Comprehensive installation instructions for the Tribesigns Cassey 70.9-inch Rectangle Conference Table (Model CT-F1596). Includes parts list, hardware details, and step-by-step assembly guidance.</p>
	<p>Kids Smart Watch User Guide</p> <p>Comprehensive user guide for the Kids Smart Watch, covering safety, operation, features, and troubleshooting.</p>
 <p>CT Virtual Solutions Where do I start?</p> <p>Bring the same instructor-led training to your virtual learning class.</p> <p>Explore GE Healthcare's comprehensive CT virtual training solutions, offering instructor-led online courses for CT technologists. Learn about CT User Interface, GSI, Cardiac Anatomy, Volume Viewer, and more. Earn CE credits with flexible virtual learning options.</p>	<p>GE HealthCare CT Virtual Training Solutions: Course Catalog</p> <p>Explore GE HealthCare's comprehensive CT virtual training solutions, offering instructor-led online courses for CT technologists. Learn about CT User Interface, GSI, Cardiac Anatomy, Volume Viewer, and more. Earn CE credits with flexible virtual learning options.</p>
 <p>CITIZEN</p> <p>Windows Driver Guide</p> <p>Windows version: For Windows 7</p> <p>CITIZEN SYSTEMS JAPAN CO., LTD.</p>	<p>CITIZEN Windows Driver Guide - Installation and Uninstallation</p> <p>A comprehensive guide from CITIZEN SYSTEMS JAPAN CO., LTD. detailing the installation and uninstallation of Windows drivers for various CITIZEN printer models. Covers setup for USB, Serial, COM, and TCP/IP interfaces, supported OS, and troubleshooting.</p>



[CAEN ELS FLUCS CT PCB Series DC Current Transducers User's Manual](#)

Comprehensive user's manual for CAEN ELS FLUCS CT PCB Series DC Current Transducers. Details installation, operation, technical specifications, and mechanical dimensions for models CT-13, CT-26, CT-52 and their voltage output variants. Features closed-loop technology for precise AC/DC current measurement.