

[Manuals.plus](#) /

> [wisuware](#) /

> wisuware Smart Fingerprint Deadbolt Lock (Model: Face Door Lock) Instruction Manual

wisuware Face Door Lock

wisuware Smart Fingerprint Deadbolt Lock

MODEL: FACE DOOR LOCK

Instruction Manual

1. Introduction

The wisuware Smart Fingerprint Deadbolt Lock offers advanced security and convenience for your frameless glass doors. This 5-in-1 keyless entry system provides multiple unlocking methods including face recognition, Tuya App control, fingerprint, passcode, IC card, and traditional mechanical key. Designed for ease of use and robust performance, this manual will guide you through the installation, operation, and maintenance of your new smart lock.

2. Product Overview

The wisuware Smart Fingerprint Deadbolt Lock is constructed from durable aluminum with a polished black finish and features a curved tempered glass panel. It is designed for frameless glass doors with a thickness of 10-12 mm. Key components include the main lock unit with a keypad and fingerprint sensor, a double hook latch, and a secure mounting system.

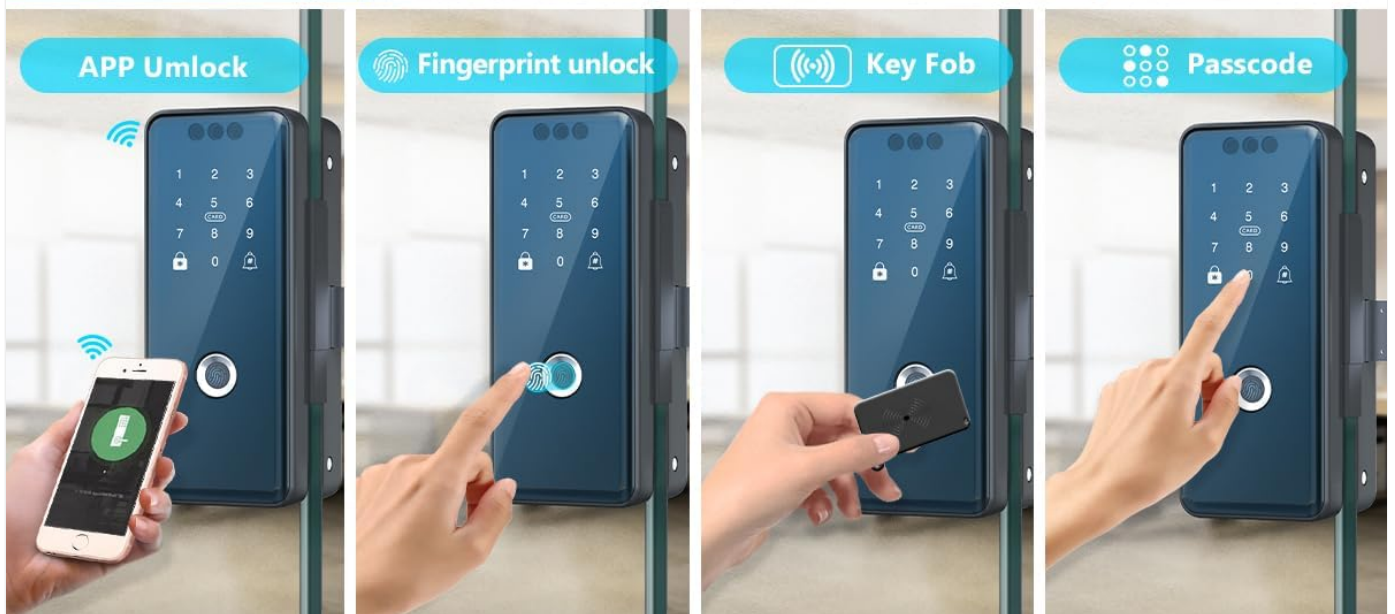


Figure 2.1: Multiple unlocking methods available with the wisuware smart lock.

RELIABLE SMART LOCK



100 Fingerprints



Waterproof



Remote Period
Unlocking



Easy installation



Identify Fingerprint
1 Second Unlocking



Recognition rate



Figure 2.2: Key features of the wisuore smart lock, including fingerprint capacity and recognition speed.

STAINLESS STEEL 304 DOUBLE HOOK LATCH

NO DRILLING

3mm Thicken SUS Plate



Figure 2.3: Detail of the Stainless Steel 304 double hook latch, designed for secure, drill-free installation.

FIT FOR THESE SIZE DOORS

Unframed (two glass doors): Thickness 10-12 mm

Both the left and right doors are possible

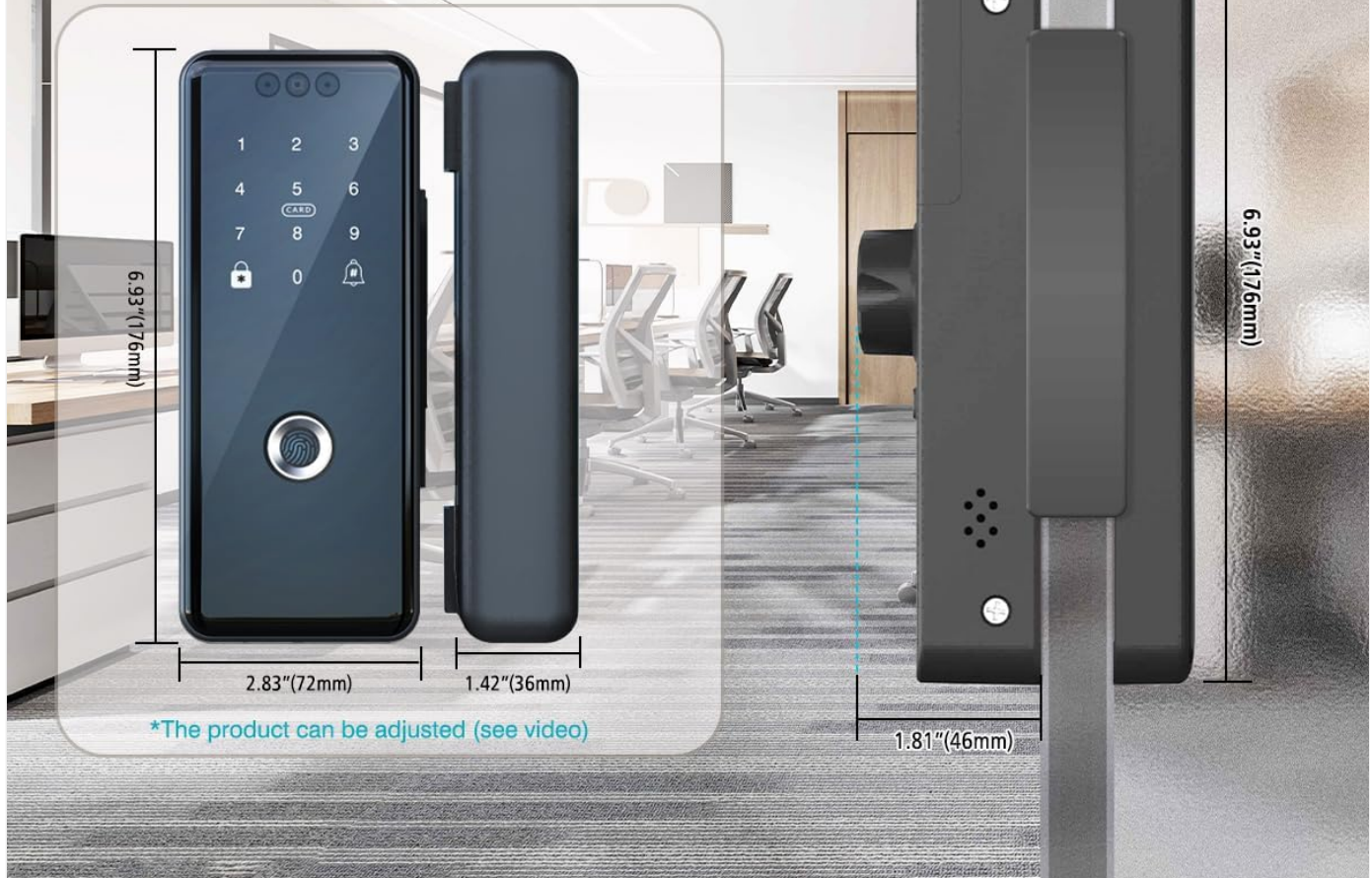


Figure 2.4: Door compatibility and dimensions for the wisuore smart lock on unframed glass doors.

CURVED TEMPERED GLASS

T2.5mm tempered glass, exquisite and durable



Figure 2.5: The curved tempered glass panel of the smart lock, providing durability and a sleek design.



Figure 2.6: The wisuore smart lock with its accompanying IC cards and the Tuya Smart App interface.

3. Setup and Installation

Before installation, ensure your door meets the specified requirements (frameless glass, 10-12mm thickness). The lock is designed for easy, drill-free installation.

3.1 Installation Steps

1. **Prepare the Door:** Clean the glass surface where the lock will be mounted.
2. **Apply Template:** Use the provided installation template to mark the precise location for the mounting plates on your glass door.
3. **Attach Mounting Plates:** Securely attach the inner and outer mounting plates to the door using the adhesive and screws provided. Ensure they are aligned correctly.
4. **Install Lock Body:** Connect the main lock unit to the inner mounting plate. Ensure all cables are properly routed and connected.

5. **Install Latch Unit:** Attach the latch unit to the outer mounting plate, ensuring it aligns with the main lock unit for proper locking function.
6. **Secure Components:** Tighten all screws to ensure the lock is firmly attached to the door.
7. **Insert Batteries:** Open the battery compartment and insert the required batteries (not included).

3.2 App Setup (Tuya Smart App)

1. **Download App:** Download the Tuya Smart App from your device's app store.
2. **Register/Login:** Create an account or log in to your existing Tuya Smart account.
3. **Add Device:** Follow the in-app instructions to add your smart lock. This typically involves putting the lock into pairing mode and connecting it to your home Wi-Fi network.
4. **Configure Settings:** Once connected, you can configure user fingerprints, passcodes, IC cards, and face recognition data through the app.

3.3 Installation Video

Your browser does not support the video tag.

Video 3.1: Official installation guide for the wisuore Smart Fingerprint Deadbolt Lock on glass doors.

4. Operating Instructions

The wisuore smart lock offers multiple ways to unlock and manage access.

4.1 Unlocking Methods

- **Face Recognition:** Stand in front of the lock, and it will automatically recognize your registered face to unlock.
- **Fingerprint Unlock:** Place your registered finger on the fingerprint sensor. The lock will unlock within 0.3 seconds upon successful recognition.
- **Passcode Entry:** Enter your registered passcode on the keypad. For enhanced security, use anti-peep virtual passwords by adding random digits before or after your actual code.
- **IC Card:** Tap your registered IC card against the designated area on the lock.
- **Tuya App Control:** Use the Tuya Smart App on your smartphone to remotely unlock the door via Wi-Fi.
- **Mechanical Key:** In case of emergency or power failure, use the provided mechanical key to unlock the door.

4.2 Lock Management via Tuya Smart App

The Tuya Smart App allows comprehensive management of your lock:

- **User Management:** Add or delete fingerprints, passcodes, and IC cards for different users (admin and regular users).
- **Remote Access:** Unlock the door remotely from anywhere with an internet connection.
- **Temporary Passcodes:** Generate one-time or time-limited passcodes for guests or service providers.
- **Unlock Records:** View a history of all unlock events, including method and user.
- **Auto-Lock:** Configure the auto-lock feature for automatic locking after a set period.
- **Privacy Lock:** Activate the indoor privacy lock for added security from the inside.

5. Maintenance

Proper maintenance ensures the longevity and optimal performance of your smart lock.

5.1 Battery Replacement

The lock requires batteries (not included). When the battery level is low, the lock will provide alerts. Replace batteries promptly to avoid interruption of service. Use the specified battery type and ensure correct polarity. In case of complete battery depletion, the lock can be temporarily powered via a USB emergency power source.

5.2 Cleaning

Clean the lock's exterior, especially the fingerprint sensor and keypad, with a soft, dry cloth. Avoid using abrasive cleaners or solvents that could damage the finish or electronic components.

6. Troubleshooting

Refer to the following common issues and solutions:

- **Lock does not connect to Wi-Fi:** Ensure your Wi-Fi router is within range and the signal is strong. Re-attempt the pairing process in the Tuya Smart App. Check if your Wi-Fi network is 2.4GHz, as some smart devices do not support 5GHz networks.
- **Difficulty with programming/setup:** Ensure you are following the instructions in the Tuya Smart App precisely. If issues persist, refer to the app's help section or contact customer support for assistance.
- **Fingerprint/Face recognition failure:** Ensure your finger/face is clean and properly positioned on the sensor/camera. Re-register your fingerprint/face if recognition continues to fail.
- **Low battery alerts:** Replace the batteries immediately. If the lock is completely dead, use a USB power bank to temporarily power it via the emergency USB port.
- **Lock not responding:** Check battery levels. If batteries are fine, try restarting the lock by removing and reinserting the batteries. If the issue persists, a factory reset might be necessary (refer to the app or support for instructions).

7. Specifications

Feature	Detail
Brand	wisuwore
Model Name	Face Door Lock
Lock Type	Frameless Glass Doors (Face Recognition)
Special Feature	3D Face, One-Touch Lock
Material	Aluminum
Color	Black
Item Dimensions (L x W x H)	2.76 x 1.4 x 7.3 inches
Item Weight	4 Pounds
Connectivity Protocol	Wi-Fi
Control Method	App, Remote, Touch
Batteries Required?	Yes (Batteries Not Included)
Recommended Uses	Door locks

8. Warranty Information

This wisuware product is covered by a manufacturer's warranty. Please refer to the warranty card included with your product packaging for specific terms, conditions, and duration. Retain your proof of purchase for warranty claims.

9. Support Contact

For any product issues, inquiries, or technical assistance, please contact wisuware customer support. Free assistance will be provided for product-related concerns. Refer to the contact information provided in your product packaging or visit the official wisuware website for support details.

