

Oraimo OPB-P5201

Oraimo Traveler Link 20 Power Bank User Manual

Model: OPB-P5201 | Brand: Oraimo

INTRODUCTION

Thank you for choosing the Oraimo Traveler Link 20 Power Bank. This device is designed to provide reliable portable power for your electronic devices. With a high capacity of 20000mAh and multiple built-in charging cables, it offers convenient and efficient charging on the go. Please read this manual carefully to ensure proper use and optimal performance.



Image: The Oramo Traveler Link 20 Power Bank, showcasing its compact design and integrated cables.

SETUP

Initial Charging

Before first use, fully charge your Oramo Traveler Link 20 Power Bank. This ensures the battery is calibrated and ready for optimal performance.

1. Connect the power bank to a power source using one of the built-in recharging cables (USB-A, Type-C, or Micro-USB) or an external USB-A to Type-C/Micro-USB cable.
2. The LED indicators on the power bank will illuminate to show the charging status.
3. Once all LED indicators are solid, the power bank is fully charged. Disconnect it from the power source.

Identifying Components

Familiarize yourself with the power bank's features:

- **Built-in Charging Cables:** Includes Type-C, Micro-USB, and Lightning cables for charging various devices.
- **Built-in Recharging Cable:** A USB-A cable is integrated for convenient recharging of the power bank itself.
- **USB-A Output Port:** An additional USB-A port for charging devices using your own cable.
- **LED Indicators:** Display the remaining battery level and charging status.
- **Power Button:** Activates the power bank and controls the LED flashlight.
- **LED Flashlight:** Integrated light for emergency use.

OPERATING INSTRUCTIONS

Charging Your Devices

The Traveler Link 20 allows you to charge up to four devices simultaneously using its built-in cables and USB-A output port.

1. Select the appropriate built-in cable (Type-C, Micro-USB, or Lightning) for your device.
2. Connect the cable to your device's charging port.
3. Alternatively, use your own USB charging cable with the dedicated USB-A output port.
4. The power bank will automatically begin charging your device(s). The LED indicators will show the power bank's remaining charge.

4 Built-in Charging & Recharging Cables

Seamless Power Connectivity

Traveler Link 20 comes with built-in Type-C, Micro-USB, and Lightning charging cables to meet your daily charging needs.

What's more, a USB-A cable is included for easy recharging.



Image: Close-up view of the Oramo Traveler Link 20 showing its integrated Type-C, Micro-USB, and Lightning charging cables.

4 Output Ports

Charge Up to 4 Devices Simultaneously

Traveler Link 20 is equipped with 3 built-in charging cables and 1 USB-A port, and it can simultaneously deliver power to 4 devices at a speed of up to 12W.



Image: The power bank simultaneously charging a smartphone, a smartwatch, and a portable toothbrush, demonstrating its multi-output capability.

Wide Compatibility

Smart and Powerful

Equipped with oraimo's exclusive chip, AniFast™ power bank can intelligently identify the fast-charging protocol of your device to deliver the speediest possible charge.



iOS Smart Phone:

iPh15 Pro/15 Plus/15 Pro
Max/15/14/13/12/X max



Smart Phone:

Samsung: S23 ultra/S22/A54/A72
/Note 20 ultra/Note 20
TECNO: Camon 20 premier/20
/20 pro; SPARK 10/10 PRO
Infinix: NOTE 30/30 VIP/30 Pro(X678B)
/ZERO 30/HOT 30Mi 13/12/10



Accessories:

oraimo FreePods 4,
oraimo Watch 4 Plus, etc

Image: The Oraimo Traveler Link 20 demonstrating wide compatibility with various devices including iOS smartphones, Android smartphones, and accessories like earbuds.

20000mAh Big Capacity

Fully Charge Your Phone Up to 5 Times

Featuring a high battery capacity, Traveler Link 20 can fully juice up an iPhone XS almost 5 times.

30 times
Infinix NOTE 30

20 times
TECNO Camon 20

10 times
Samsung S10

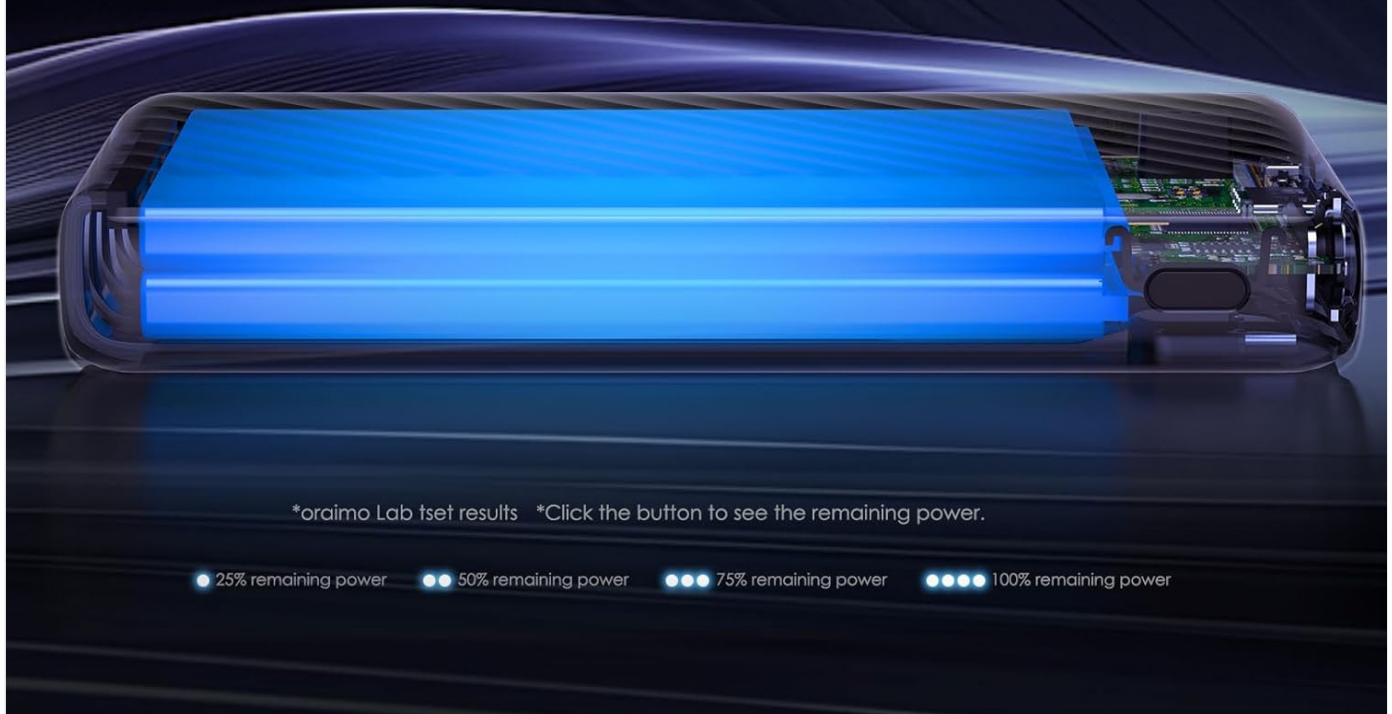


Image: An illustration highlighting the 20000mAh capacity of the Oraimo Traveler Link 20, capable of fully charging a phone multiple times.

Recharging the Power Bank

The power bank can be recharged using its built-in USB-A cable or via its Type-C or Micro-USB input ports.

1. **Using Built-in USB-A Cable:** Plug the integrated USB-A cable into a USB wall adapter, computer USB port, or other USB power source.
2. **Using Type-C or Micro-USB Input:** Connect a compatible cable (not included for these inputs) to the respective port on the power bank and then to a power source.
3. The LED indicators will flash during charging and remain solid when fully charged.

Recharge in 2 Ways

Recharge Your Power Bank Flexibly

Traveler Link 20 can be recharged using a Type-C port, Micro-USB port, or a USB-A cable, providing multiple recharging options for convenience.

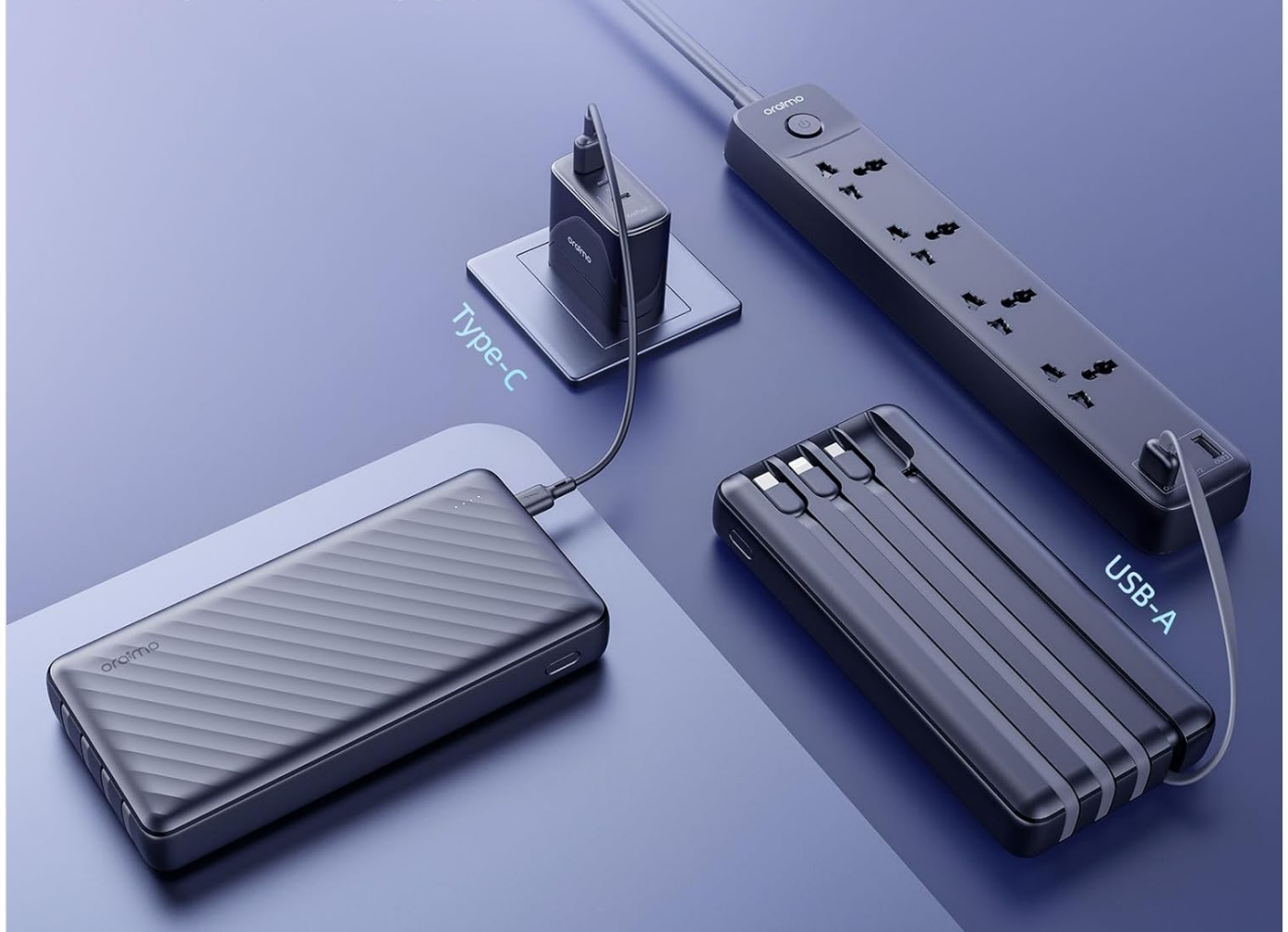


Image: The power bank being recharged via its built-in USB-A cable connected to a power strip, and also showing an alternative recharge method using a Type-C cable and wall adapter.

LED Flashlight Function

The power bank includes a built-in LED flashlight with an SOS light alarm function for emergencies.

- **To turn on/off the flashlight:** Long press the power button for approximately 3 seconds.
- **To activate SOS mode:** While the flashlight is on, short press the power button to cycle through modes (steady light, SOS flashing).

Durable LED Torch

Up to 110 Hours of Illumination

Enjoy up to x hours of illumination to handle any unexpected emergency with ease.

*Long press the main button for 3 seconds to open the LED torch.



Image: The Oraimo Traveler Link 20 with its LED flashlight illuminated, demonstrating its emergency lighting capability.

Low Current Charging Mode

The power bank automatically detects and switches to low current charging mode for small devices like wireless earbuds or smartwatches, preventing damage from overcurrent.

- Simply connect your low-current device. The power bank will intelligently adjust the output.

MAINTENANCE

To ensure the longevity and safe operation of your Oraimo Traveler Link 20 Power Bank, follow these maintenance guidelines:

- **Storage:** Store the power bank in a cool, dry place away from direct sunlight and extreme temperatures.
- **Cleaning:** Use a soft, dry cloth to clean the exterior of the power bank. Do not use liquid cleaners or abrasive materials.

- **Avoid Physical Damage:** Do not drop, puncture, or disassemble the power bank. Avoid exposing it to water or high humidity.
- **Regular Charging:** If not used for extended periods, charge the power bank at least once every three months to maintain battery health.

TROUBLESHOOTING

If you encounter issues with your power bank, refer to the following common problems and solutions:

Problem	Possible Cause	Solution
Power bank not charging devices.	Low battery; incorrect cable connection; device incompatibility.	Ensure power bank is charged. Check cable connections. Verify device compatibility.
Power bank not recharging.	Faulty charging cable/adaptor; power source issue.	Try a different charging cable and wall adaptor. Ensure the power source is active.
Slow charging.	Using a non-fast charging adapter; multiple devices connected; cable quality.	Use a compatible fast-charging adapter. Disconnect other devices. Use high-quality cables.
LED flashlight not working.	Incorrect operation; low battery.	Long press the power button for 3 seconds. Recharge the power bank.

The Oraimo Traveler Link 20 features a multi-protection system (over-current, short-circuit, over-discharge, high/low-temperature charging/discharge, overcharge, output overvoltage) to protect itself and your devices. If the power bank stops functioning, it might be due to one of these protection mechanisms activating. Disconnect all devices and cables, then try again after a few minutes.

Multi-protection System

Keep You and Your Devices Safe

Equipped a comprehensive safety feature, ensuring your devices will be shielded from harm, being charged swiftly and securely.



Over current protection



Short circuit protection



Over-discharge protection



High-temperature charging protection



Overcharge protection



Output overvoltage protection



High-temperature discharge protection



Low-temperature discharge protection



Low-temperature charging protection

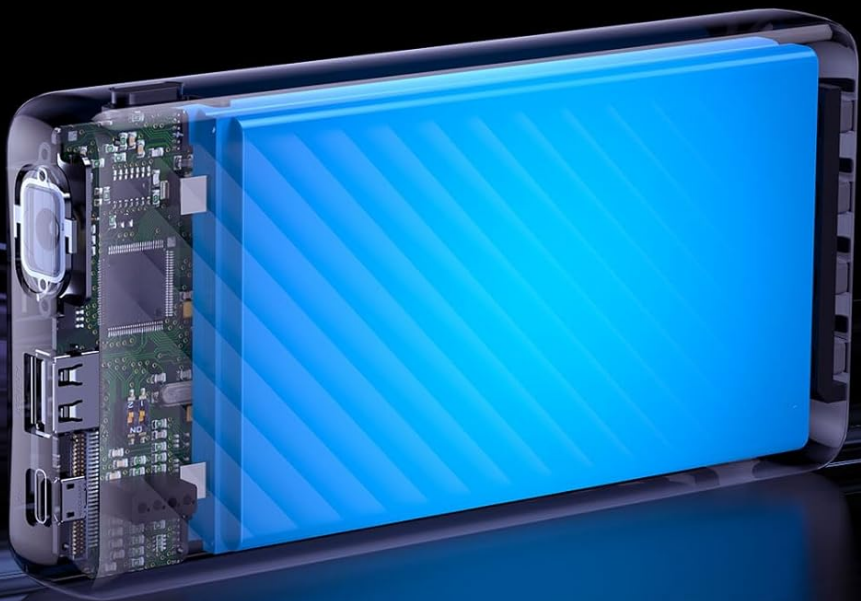


Image: Diagram illustrating the multi-protection system of the Oramo Traveler Link 20, highlighting various safety features.

PRODUCT SPECIFICATIONS

Feature	Detail
Model Name	Traveler Link 20
Model Number	OPB-P5201
Brand	Oraimo
Battery Capacity	20000mAh (Lithium Ion)
Output Power	Up to 12W (5V/2.4A Max)
Input Voltage	5V

Feature	Detail
Connector Type	USB Type-C, USB Type-A, Micro USB (built-in cables: Type-C, Micro-USB, Lightning; built-in recharging cable: USB-A)
Special Features	4 Built-in Charging & Recharging Cables, Charge up to 4 devices simultaneously, Multi-protection System, LED Flashlight with SOS, Low Current Protection
Dimensions	20.5 x 3 x 11 cm
Weight	200 grams
Color	Black

WARRANTY AND SUPPORT

Oraimo products are manufactured to the highest quality standards. This product is covered by a limited warranty from the date of purchase. Please refer to the warranty card included in your product packaging for specific terms and conditions. For technical support, troubleshooting assistance, or warranty claims, please contact Oraimo customer service through their official website or the contact information provided in your product documentation. Keep your proof of purchase for warranty validation.

