



[Manuals.plus](#) /

> [Virubi](#) /

> Virubi 60-inch Fluted Sideboard Buffet Cabinet Instruction Manual

Virubi WF530090A

Virubi 60-inch Fluted Sideboard Buffet Cabinet Instruction Manual

Model: WF530090A

1. IMPORTANT SAFETY INFORMATION

Please read all instructions carefully before assembly and use. Retain this manual for future reference.

- Always assemble with care, following the provided instructions.
- Keep away from sharp edges, especially in homes with children, due to the curved design.
- Ensure all connections are securely fastened before use.
- Do not overload shelves or the top surface to prevent tipping or damage.
- Place the cabinet on a level, stable surface.

2. PRODUCT OVERVIEW

The Virubi 60-inch Fluted Sideboard Buffet Cabinet is designed for versatile storage and display in your living space. It features a modern aesthetic with a fluted surface and curved corners, offering both style and functionality.

Key Features:

- **Spacious Storage:** Equipped with 4 doors and adjustable shelves to meet various storage needs and help organize items.
- **Modern Design:** Features a unique fluted surface and elegant curved corners, enhancing the aesthetic appeal of any room.
- **Durable Construction:** Crafted from high-grade MDF and Pine wood for long-lasting durability and stability.



Figure 2.1: Front view of the Virubi Fluted Sideboard Buffet Cabinet.

3. PACKAGE CONTENTS

Before beginning assembly, please ensure all parts and hardware are present and undamaged. If any components are missing or damaged, please contact customer support.

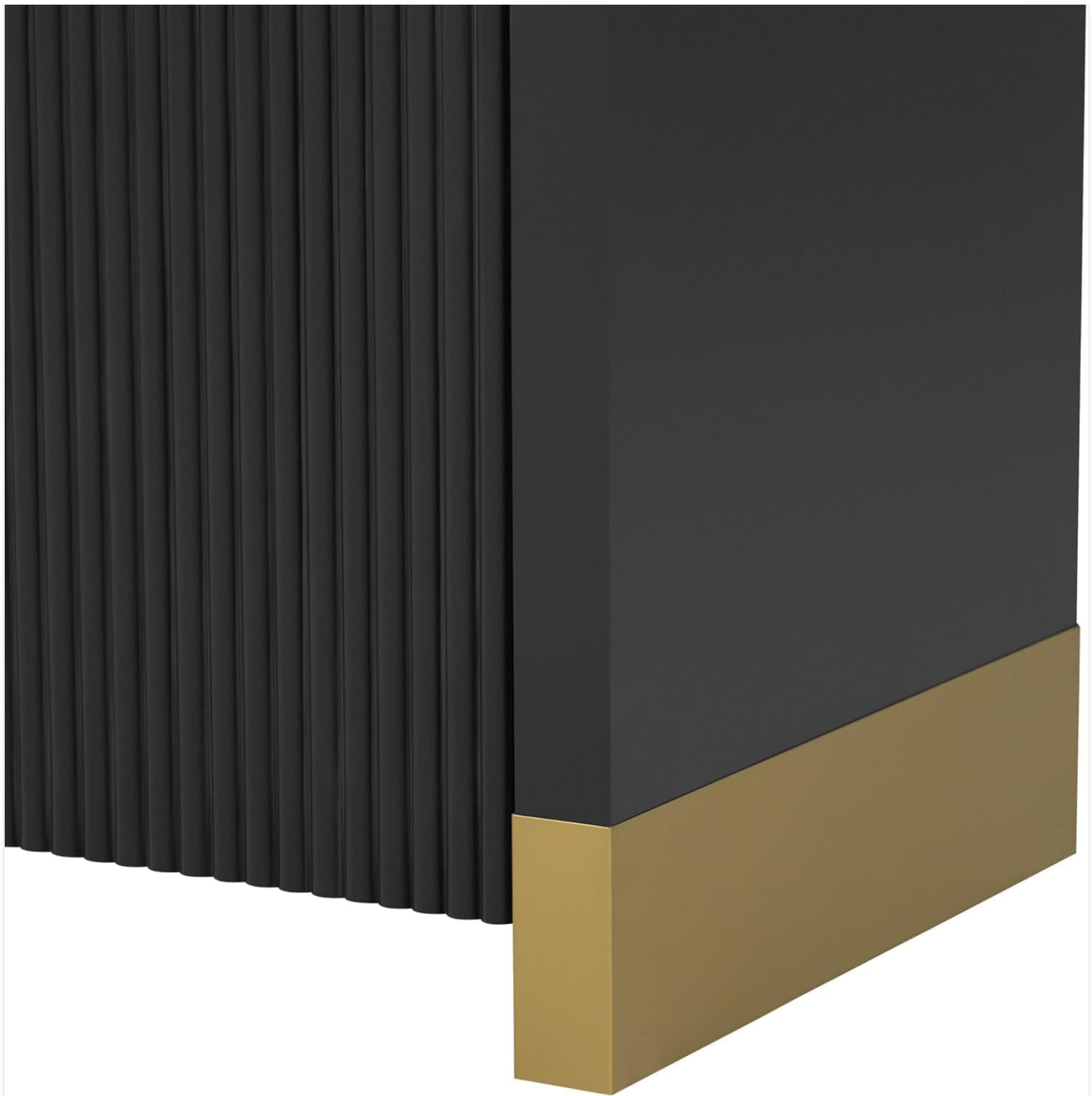


Figure 3.1: Dimensional diagram of the cabinet, illustrating various components and their sizes.

4. ASSEMBLY INSTRUCTIONS

Assembly is required and involves multiple steps. Basic tools such as a screwdriver (not included) may be needed. It is recommended to assemble the cabinet with two people.

Step-by-Step Guide:

1. **Unpack Components:** Carefully remove all parts from the packaging and lay them out on a clean, soft surface to prevent scratches. Verify against the parts list (refer to Figure 3.1 for component identification).
2. **Assemble the Base:** Attach the support legs/base components to the bottom panel of the cabinet using the provided hardware. Ensure they are securely tightened.
3. **Construct the Frame:** Connect the side panels, top panel, and back panel to form the main frame of the cabinet. Pay attention to the orientation of each piece.
4. **Install Shelves:** Insert the shelf support pins into the desired holes on the interior side panels. Place the adjustable shelves

onto these pins.

5. **Attach Doors:** Mount the hinges to the cabinet doors and then attach the doors to the cabinet frame. Adjust hinges as necessary for proper door alignment.
6. **Final Checks:** Ensure all screws and fasteners are tight. Gently move the cabinet to its desired location.



Figure 4.1: Interior view of the cabinet with doors open, highlighting the adjustable shelves.



Figure 4.2: Detail of the adjustable shelf pin, allowing for flexible shelf placement.

5. OPERATING INSTRUCTIONS

Using your Virubi Sideboard Buffet Cabinet is straightforward.

- **Opening/Closing Doors:** Gently pull the doors to open and push to close. The hinges are designed for smooth operation.
- **Adjusting Shelves:** To adjust the height of an interior shelf, first remove all items from the shelf. Then, lift the shelf to remove it from the support pins. Relocate the support pins to the desired height and place the shelf back on the pins, ensuring it is level and secure.

6. MAINTENANCE AND CARE

Proper care will ensure the longevity and appearance of your cabinet.

- **Cleaning:** Wipe the cabinet surfaces with a soft, damp cloth. Avoid using harsh chemicals, abrasive cleaners, or excessive moisture, as these can damage the finish.
- **Spills:** Clean up spills immediately to prevent staining or damage to the wood.
- **Sunlight Exposure:** Avoid prolonged exposure to direct sunlight to prevent fading or discoloration.
- **Heat and Moisture:** Keep the cabinet away from direct heat sources and areas of high humidity.

7. TROUBLESHOOTING

If you encounter any issues with your cabinet, refer to the following common solutions:

- **Wobbly Cabinet:** Ensure the cabinet is placed on a level surface. Check all assembly screws and tighten any that are loose.
- **Doors Not Aligning:** Adjust the hinges on the doors. Most furniture hinges allow for minor adjustments to align doors horizontally, vertically, and in depth.
- **Difficulty Opening/Closing Doors:** Check for any obstructions inside the cabinet or along the door edges. Ensure hinges are properly installed and lubricated if necessary.

If problems persist, please contact customer support for assistance.

8. SPECIFICATIONS

Attribute	Detail
Brand	Virubi
Model Number	WF530090A
Product Dimensions (D x W x H)	16"D x 60"W x 33"H
Item Weight	120 Pounds
Color	Black
Material	Engineered Wood, Pine Wood
Number of Doors	4
Number of Shelves	1 (Adjustable)
Assembly Required	Yes
GTIN / UPC	196986418103

9. WARRANTY AND SUPPORT

Virubi provides a **ONE YEAR QUALITY GUARANTEE** for this product. If you experience any quality problems within one year of purchase, we will offer a replacement or a 100% refund.

For any questions or concerns, please feel free to email our customer support team. We are committed to resolving your issues within 24 hours.

Please have your model number (WF530090A) and purchase information ready when contacting support.

