

Edifier NeoDots-BK

Edifier NeoDots True Wireless Earbuds User Manual

Model: NeoDots-BK

INTRODUCTION

Thank you for choosing the Edifier NeoDots True Wireless Earbuds. These earbuds are designed to provide a superior audio experience with advanced features such as Hybrid Active Noise Cancellation, Hi-Res Wireless Audio, and extended battery life. This manual will guide you through the setup, operation, and maintenance of your new earbuds to ensure optimal performance and longevity.



Image: The Edifier NeoDots earbuds resting in their open charging case, showcasing their sleek black design.

PACKAGE CONTENTS

Please ensure all the following items are included in your package:

- Edifier NeoDots True Wireless Earbuds (Left and Right)
- Wireless Charging Case
- USB-C Charging Cable
- User Manual
- Multiple sizes of ear tips (Small, Medium, Large) for a comfortable fit

PRODUCT FEATURES

Superior Sound Quality

Experience high-resolution audio with Hi-Res Audio Wireless certification and support for LDAC/AAC/SBC codecs. The hybrid driver units, combining Balanced Armature and 10mm dynamic drivers, deliver balanced sound with exceptional clarity and minimal distortion across all frequencies.

SUPERIOR SOUND FROM HYBRID DRIVER UNITS

Hi-Res Audio Wireless & LDAC/AAC/SBC codecs deliver high-resolution, balanced sound with low distortion.



Image: An exploded view diagram illustrating the internal components of the earbud, highlighting the balanced armature and dynamic drivers responsible for superior sound.

Hybrid Active Noise Cancellation (-48dB)

Block out distractions with advanced noise-canceling technology, reducing ambient noise by up to -48dB. Multiple noise

cancellation modes are available to adapt to various environments, ensuring an immersive and uninterrupted listening experience.

HYBRID ACTIVE NOISE CANCELLATION

Advanced noise canceling reduces noise by up to -48dB with multiple modes for an immersive, uninterrupted listening



Image: A woman wearing the Edifier NeoDots earbuds in an urban setting, with a graphic indicating 48dB noise reduction, symbolizing effective active noise cancellation.

Crystal Clear Hands-Free Calls

Equipped with 6 beamforming microphones and an AI algorithm, the earbuds precisely pick up your voice while filtering out background noise, ensuring clear and crisp hands-free calls even in noisy environments.

CLEAR HANDS-FREE CALLS WITH 6 MICS

Beamforming mics and AI isolate voices from background noise for clear, hands-free calls.



Image: A man using the Edifier NeoDots earbuds for a call, with an overlay diagram illustrating the placement of the six microphones for enhanced call clarity.

Extended Battery Life & Wireless Charging

Enjoy up to 17 hours of playtime on a single charge, extended to a total of 56 hours with the charging case. A quick 15-minute charge provides 5 hours of use. The charging case supports convenient wireless charging, making recharging simple and hassle-free.

UP TO 56H OF ULTRA-LONG PLAYTIME

15 ⚡ Mins = **5** 🎵 Hrs



17 Hrs



56 Hrs



Wireless Charging



USB-C Charging



Image: The Edifier NeoDots charging case placed on a wireless charging pad, with icons indicating 15 minutes of charge for 5 hours of playtime, 17 hours on a single charge, and 56 hours total with the case.

Stable & Multipoint Bluetooth 5.4 Connection

Benefit from seamless audio streaming and a stable connection with Bluetooth V5.4. The multipoint connection feature allows you to connect to two Bluetooth devices simultaneously, enabling effortless switching between music on your tablet and calls on your smartphone.

MULTIPOINT CONNECTION & BLUETOOTH 5.4

One pair of headphones for two Bluetooth devices, supports seamless playback switching.

 **Bluetooth 5.4**



Image: The Edifier NeoDots earbuds floating above a smartphone and a laptop, illustrating their multipoint connection capability via Bluetooth 5.4.

Intelligent Wearing Detection

A built-in wear sensor automatically pauses music when you remove an earbud and resumes playback when you put it back on, providing a convenient and intuitive listening experience.

INTELLIGENT START-STOP

A built-in wear sensor automatically pauses and plays audio.

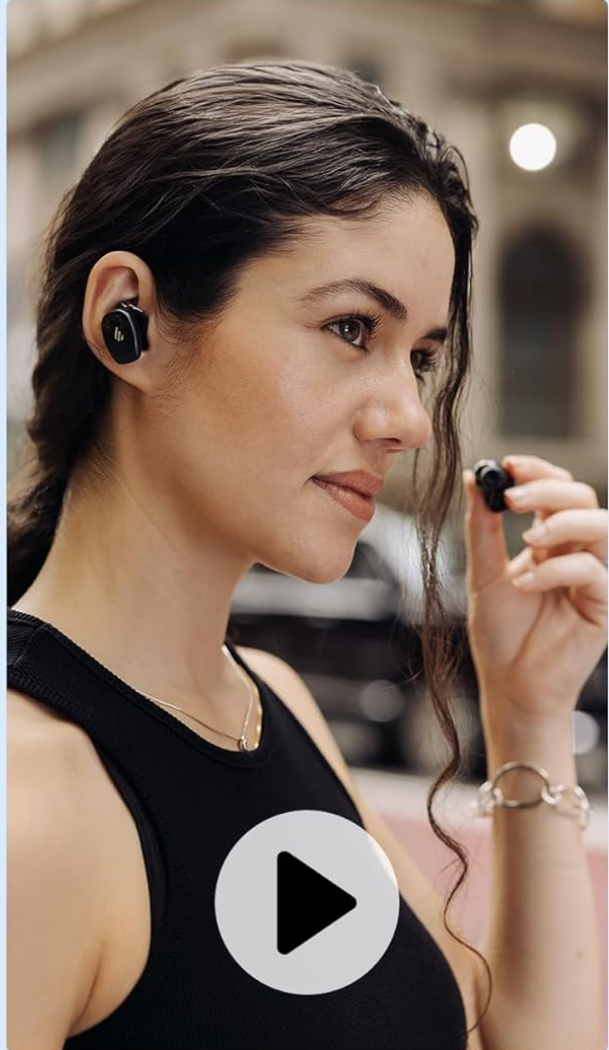
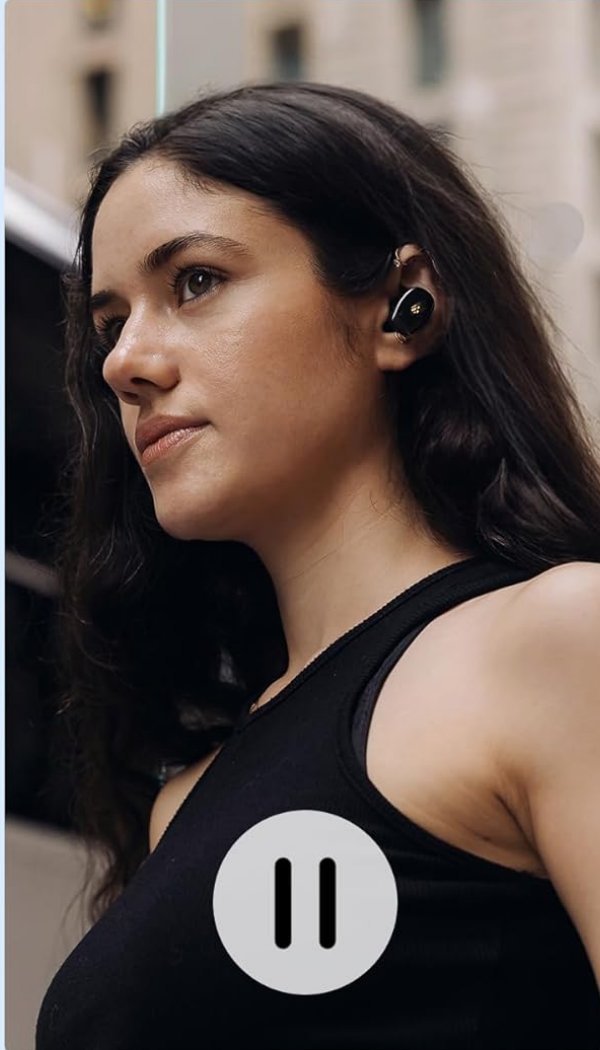


Image: Two side-by-side images of a woman wearing the earbuds; one showing music paused when an earbud is removed, and the other showing music playing when both are worn.

Google Fast Pair

For Android users, Google Fast Pair enables quick and effortless pairing with your device, streamlining the connection process.

GOOGLE FAST PAIR

With Google Fast Pair, you can quickly and effortlessly pair with your Android device.



Image: The Edifier NeoDots earbuds resting on a laptop keyboard next to a smartphone screen displaying the Google Fast Pair interface.

EDIFIER ConneX App Compatibility

Unlock additional functions and personalize your listening experience by downloading the EDIFIER ConneX app. Customize control settings, adjust your EQ, and explore more features.

EDIFIER CONNEX APP

Download EDIFIER ConneX App to explore a personalized listening experience.

Preset EQ Options

Customize Your Own EQ

Rename Your Device

Prompt Volume Setting

Schedule Power Off



Image: Three smartphones displaying various screens of the EDIFIER ConneX app, showcasing options for EQ customization, noise cancellation controls, and device settings.

SETUP

1. Initial Charging

Before first use, place both earbuds into the charging case and connect the case to a power source using the provided USB-C cable. The LED indicator on the front of the case will show the charging status. Ensure the earbuds and case are fully charged for optimal performance. The case also supports wireless charging; simply place it on a compatible wireless charging pad.

2. Pairing with Your Device

For Android Devices (Google Fast Pair): Open the charging case near your Android device. A pop-up notification will appear on your screen, prompting you to pair. Follow the on-screen instructions to complete the pairing process quickly.

For Other Devices (Manual Bluetooth Pairing):

- a. Open the charging case. The earbuds will automatically enter pairing mode (indicated by a flashing light on the earbuds).
- b. On your device (smartphone, tablet, laptop), go to the Bluetooth settings.
- c. Search for "Edifier NeoDots" in the list of available devices and select it to connect.
- d. Once connected, a voice prompt will confirm successful pairing.

3. **EDIFIER ConneX App Installation**

For enhanced control and customization, download the "EDIFIER ConneX" app from your device's app store (Google Play Store for Android, Apple App Store for iOS). Install the app and connect your NeoDots earbuds within the app to access features like EQ customization, noise cancellation mode selection, and touch control personalization.

OPERATING INSTRUCTIONS

Touch Controls

The Edifier NeoDots earbuds feature intuitive touch controls on each earbud. The touch-sensitive area is located on the outer surface of each earbud, marked by the Edifier logo. These controls allow for easy management of music playback, calls, and noise cancellation modes without needing to access your connected device.



Image: A visual guide detailing the touch control functions for both left and right earbuds, including single, double, and triple taps, and long presses for various commands.

Default Touch Control Functions

Action	Left Earbud (L)	Right Earbud (R)
Music Playback: Play/Pause	Single Tap (x1)	Single Tap (x1)
Music Playback: Next Track	Double Tap (x2)	Double Tap (x2)
Music Playback: Previous Track	Triple Tap (x3)	Triple Tap (x3)
Call Management: Answer/End Call	Single Tap (x1)	Single Tap (x1)
Call Management: Reject Call	Double Tap (x2)	Double Tap (x2)

Action	Left Earbud (L)	Right Earbud (R)
Noise Control: Switch ANC/Ambient Mode	Long Press (2s)	Long Press (2s)

Note: Touch control functions can be customized via the EDIFIER ConneX App.

Noise Cancellation Modes

The NeoDots earbuds offer multiple noise cancellation modes to suit your environment:

- **High Noise Cancellation Mode:** Maximizes noise reduction for extremely noisy environments.
- **Medium Noise Cancellation Mode:** Provides balanced noise reduction for moderately noisy settings.
- **Ambient Sound Mode:** Allows you to hear your surroundings while still enjoying your audio, ideal for awareness.
- **Wind Reduction Mode:** Specifically designed to minimize wind noise during outdoor activities.

Switch between these modes using the touch controls or through the EDIFIER ConneX App.

CHARGING

Your Edifier NeoDots earbuds and charging case are designed for convenient and efficient power management.

Charging the Earbuds

Place the earbuds into the charging case. They will automatically begin charging. The LED indicator on the case will show the charging status of the case and earbuds.

Charging the Case

- USB-C Charging:** Connect the provided USB-C cable to the charging port on the case and to a USB power adapter (not included).
- Wireless Charging:** Place the charging case on a Qi-certified wireless charging pad. The LED indicator will illuminate to confirm charging has begun.

Battery Life

The earbuds provide approximately 17 hours of playtime on a single charge. With the fully charged charging case, the total playtime extends to about 56 hours. A quick 15-minute charge of the earbuds in the case can provide up to 5 hours of additional listening time.

MAINTENANCE

Proper maintenance ensures the longevity and optimal performance of your Edifier NeoDots earbuds.

- **Cleaning:** Regularly clean the earbuds and charging case with a soft, dry, lint-free cloth. For ear tips, remove them and clean with mild soap and water, then dry thoroughly before reattaching. Do not use harsh chemicals or abrasive materials.
- **Storage:** When not in use, always store the earbuds in their charging case to protect them from dust, dirt, and physical damage. Store the case in a cool, dry place away from extreme temperatures.
- **Water Resistance:** The earbuds are rated as Waterproof. While they can withstand splashes and sweat, they are not designed for submersion. Avoid exposing them to excessive moisture or liquids.
- **Battery Care:** To preserve battery health, avoid fully discharging the earbuds and case frequently. Charge them regularly, even if not in constant use.

TROUBLESHOOTING

If you encounter any issues with your Edifier NeoDots earbuds, please refer to the following common solutions:

1. Earbuds Not Pairing/Connecting

- Ensure both earbuds are in the charging case and have sufficient battery.
- Turn off Bluetooth on your device, then turn it back on.
- Forget "Edifier NeoDots" from your device's Bluetooth list and attempt to pair again.
- Reset the earbuds (refer to the EDIFIER ConneX App or full user manual for specific reset instructions).

2. No Sound or Low Volume

- Check the volume levels on both your device and the earbuds.
- Ensure the earbuds are properly seated in your ears and the ear tips provide a good seal.
- Try cleaning the earbud mesh to remove any debris.

3. Charging Issues

- Verify the USB-C cable is securely connected to both the case and the power source.
- If using wireless charging, ensure the case is correctly positioned on the charging pad.
- Clean the charging contacts on both the earbuds and inside the case.

4. Active Noise Cancellation Not Effective

- Ensure the earbuds are properly sealed in your ear canals. Try different sized ear tips for a better fit.
- Confirm that ANC mode is activated via touch control or the EDIFIER ConneX App.

SPECIFICATIONS

Feature	Detail
Model Name	NeoDots
Model Number	NeoDots-BK
Connectivity Technology	Wireless (Bluetooth V5.4)
Bluetooth Range	10 Meters
Audio Driver Type	Hybrid Driver (Balanced Armature + 10mm Dynamic)
Frequency Range	20Hz - 40KHz
Noise Control	Active Noise Cancellation (-48dB Depth)
Battery Life (Earbuds)	Up to 17 Hours (single charge)
Total Playtime (with Case)	Up to 56 Hours
Charging Time	Approx. 1.5 Hours (for case and earbuds)
Fast Charge	15 minutes charge for 5 hours playtime
Charging Interface	USB-C, Wireless Charging
Microphones	6 Mics for Clear Hands-Free Calls
Water Resistance Level	Waterproof
Control Method	App, Touch

Feature	Detail
Product Dimensions	4.09 x 2.28 x 4.09 inches
Item Weight	8.1 ounces

WARRANTY AND SUPPORT

Edifier products are built with quality and reliability in mind. For detailed warranty information specific to your region and product, please refer to the warranty card included in your package or visit the official Edifier website. If you encounter any issues or require technical assistance, please contact Edifier customer support through their official channels. Keep your purchase receipt as proof of purchase for warranty claims.

For further assistance, visit: www.edifier.com

Related Documents - NeoDots-BK

--	--



NeoDots

True Wireless Earbuds with Active Noise Cancellation

— Manual —



EN 1. Power ON/OFF



Open or close the case to power on/off

2. First pairing



- Once powered on, the earbuds will automatically enter Bluetooth pairing mode.
- Select "EDIFIER NeoDots" in your device settings to connect.

3. Pairing for new device



- Hold the case and hold the button on the case for about 5s.
- Select "EDIFIER NeoDots" in your device settings to connect.

Note: For subsequent use, the earbuds will automatically connect to the device used last time.

4. Multipoint connection



- Pair device A with the earbuds manually and keep the earbuds in the case.
- Re-enter Bluetooth pairing mode and select "EDIFIER NeoDots" in device A settings to connect.

- Re-enter "EDIFIER NeoDots" again in device settings to connect.

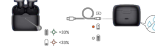
Note: For subsequent use, the earbuds will automatically reconnect to the two devices used last time.

5. Reset



- Press the button on the case and hold it open.
- Press the button on the case 3 times, until the LED starts to blink red.

6. Charging



Input: 5V ~ 200mA (Earbuds) 5V ~ 1A (Charging case)
Note: Make sure the USB port is completely dry before charging.

7. Controls



- Default music controls: High noise cancellation / Ambient sound / Noise cancellation off.
- Download EDIFIER Connect App for more customizable control settings.

[Edifier NeoDots True Wireless Earbuds with Active Noise Cancellation User Manual](#)

This manual provides instructions for using the Edifier NeoDots True Wireless Earbuds, including power on/off, pairing, multipoint connection, reset, charging, and controls. It also mentions the EDIFIER ConneX App for customizable settings.



[Edifier NeoDots EDF200172 True Wireless Earbuds with ANC - User Manual](#)

Comprehensive user manual for the Edifier NeoDots EDF200172 true wireless earbuds. Learn how to set up, pair, use controls, charge, reset, and connect to devices. Includes FCC and EU compliance information.

X5 Pro

True Wireless Earbuds with Active Noise Cancellation

Manual

EN 1. Power ON/OFF



Open or close the case to power on/off

2. First Pairing



- Once powered on, the earbuds will automatically enter Bluetooth pairing.
- Select "EDIFIER X5 Pro" in your device settings to connect.

3. Pairing For New Device



- Press the earbuds in the case and keep it open.
- Press the button on the case 3 times, white LED blinks and red LED on.
- Select "EDIFIER X5 Pro" in your device settings to connect.

Note: For subsequent use, the earbuds will automatically connect to the device used last time.

4. Reset



- Press the earbuds in the case and keep it open.
- Press the button on the case 3 times, white LED blinks until the case is complete, then the earbuds will automatically enter Bluetooth pairing.

5. Charging



Input: 5V -- 200mA (Earbuds) 5V -- 1A (Charging case)

Note: Please do not charge the earbuds when there is sweat or other liquids inside the charging port, which may damage the earbuds.

6. Controls



- Default sound control: noise cancellation / ambient sound / noise cancellation on.
- Images are for illustrative purposes only and may differ from the actual product.

For more information, please visit our website:

www.edifier.com



Model: EDP20136
Edifier International Limited
P.O. Box 2426
Central Post Office
Hong Kong
www.edifier.com
© 2024 Edifier International Limited. All rights reserved.
Printed in China

NOTICE:
For the need of technical improvement and system upgrade,
information contained herein may be subject to change from time
to time without prior notice.
Products of EDP20136 will be customized for different applications.
Please refer to the product shown in this manual for the right
different from actual product. If any difference is found, the actual
product prevails.

Edifier X5 Pro True Wireless Earbuds with ANC - User Manual

User manual for the Edifier X5 Pro True Wireless Earbuds, detailing power on/off, pairing, reset, charging, and controls with active noise cancellation.



[Edifier TWS330 NB True Wireless Stereo Earbuds with Active Noise Cancellation - User Manual](#)

User manual for Edifier TWS330 NB True Wireless Stereo Earbuds, detailing features like Active Noise Cancellation, Bluetooth pairing, operational controls, app customization, safety guidelines, and compliance information.



X3 Pro

True Wireless Earbuds with Active Noise Cancellation

Manual



EN 1. Power ON/OFF



Take out or place in both earbuds to power on/off

2. First pairing



- Once powered on, the earbuds will automatically enter Bluetooth pairing mode.
- Select "EDIFIER X3 Pro" from your device list to connect.

3. Pairing for new device



- Once powered on, the earbuds automatically reconnect to the last device used.
- If the connection fails, the earbuds enter Bluetooth pairing mode.
- If manually disconnected, the earbuds enter pairing mode.
- Select "EDIFIER X3 Pro" from new devices list to connect.

4. Multipoint connection



- While the earbuds are paired, disconnecting them from device A will auto-enter Bluetooth pairing mode.
- Go to device B settings and select "EDIFIER X3 Pro" from the device list to connect.
- Select "EDIFIER X3 Pro" from the list on device A to reconnect.
- Note: the subsequent use of the earbuds will automatically reconnect to the two devices used last time.

5. Reset/left & right connection



- The left and right earbuds are connected by default. If the left and right earbuds are disconnected, follow the steps below to re-pair:
- Turn on the earbuds.
 - Respectively tap the left and right earbuds 5 times in 3 seconds to enter and enter Fast pairing, while the LED of the earbuds will flash red and blue.
 - After reset and Fast pairing are completed, the earbuds will enter Bluetooth pairing mode, while the green LED will blink rapidly.

6. Charging



Input: 5V/100mA (Earbuds) 5V/100mA (Charging Case)
Note: Please use the USB-C port to complete the earbuds charging.

7. Controls



- Note:
- Double touch control: Noise cancellation on.
 - "V" double tap: "V" noise on.

EN 10071-2
Built-in microphones for hands-free smartphone calls.

Edifier X3 Pro True Wireless Earbuds with Active Noise Cancellation Manual

This manual provides instructions for the Edifier X3 Pro True Wireless Earbuds, covering power on/off, pairing, multipoint connection, resetting, charging, and controls. It includes information in English, French, Spanish, German, Italian, Portuguese, Japanese, and Chinese.

X5 Pro

True Wireless Earbuds with Active Noise Cancellation

Manual

EN 1. Power ON/OFF



Open or close the case to power on/off

2. First Pairing



- Once powered on, the earbuds will automatically enter Bluetooth pairing.
- Select "EDIFIER X5 Pro" in your device settings to connect.

3. Pairing For New Device



- Press the earbuds in the case and keep it open.
- Press and hold the button on the case for 5s until white and red LED lights until the case is complete. Then the earbuds will automatically enter Bluetooth pairing.

4. Reset



- Press the earbuds in the case and keep it open.
- Press the button on the case 3 times, white LED lights until the case is complete. Then the earbuds will automatically enter Bluetooth pairing.

5. Charging

Input: 5V -- 200mA (Earbuds) 5V -- 1A (Charging case)
Note: Please do not charge the earbuds when there is sweat or other liquids inside the charging port, which may damage the earbuds.

6. Controls



- Note:
- Default sound control: noise cancellation / ambient sound / noise cancellation / off.
 - Images are for illustrative purposes only and may differ from the actual product.

For more information, please visit our website:

www.edifier.com

@edifier_globe @edifier_usa @edifier_japan

Model: EDP20136

Edifier International Limited

P.O. Box 1245

Central Post Office

Hong Kong

www.edifier.com

© 2024 Edifier International Limited. All rights reserved.

Printed in China

NOTICE:

For the need of technical improvement and system upgrade,

information contained herein may be subject to change from time

to time without prior notice.

Products of EDP20136 will be customized for different applications.

Pictures and descriptions shown in this manual may be slightly

different from actual product. If any difference is found, the actual

product prevails.

[EDIFIER X5 Pro True Wireless Earbuds with Active Noise Cancellation User Manual](#)

Comprehensive user manual for the EDIFIER X5 Pro True Wireless Earbuds, detailing setup, pairing, controls, charging, and troubleshooting. Features active noise cancellation.

--	--