

Manuals+

[Q & A](#) | [Deep Search](#) | [Upload](#)

manuals.plus /

› [Avisontek](#) /

› [Avisontek Universal Wireless Garage Door Keypad 878MAX Instruction Manual](#)

Avisontek 878MAX

Avisontek Universal Wireless Garage Door Keypad

MODEL: 878MAX

Instruction Manual

1. Introduction

This manual provides detailed instructions for the installation, programming, operation, and maintenance of your Avisontek Universal Wireless Garage Door Keypad, Model 878MAX. Please read this manual thoroughly before use to ensure proper functionality and safety.

2. Compatibility

The Avisontek 878MAX keypad is designed for wide compatibility with various garage door openers. It is compatible with LiftMaster, Chamberlain, and Craftsman garage door openers manufactured from 1993 to the present, specifically those equipped with a Purple, Yellow, Red, Orange, or Green Learn Button.

Important: This keypad does not support Dip Switch Openers or Craftsman Series 100 models.

WIDE COMPATIBILITY

Notice: Not sure about compatibility? Feel free to contact us !

FOR 3 BRAND

LIFTMASTER

CHAMBERLAIN

SEARS CRAFTSMAN

FOR 5 LEARN BUTTON



2011-Present



2005-2014



1993-1997



1997-2005



1997-2005



NOT WORKS FOR DIP SWITCH and Craftsman Series 100

This image illustrates the broad compatibility of the keypad with major garage door opener brands and different learn button types, while also indicating incompatible systems.

3. Setup and Programming

Follow these steps to install the battery and program your keypad.

3.1 Battery Installation

The keypad comes with a high-capacity 9V Alkaline battery. To install or replace the battery:

1. Open the keypad cover.
2. Locate the battery compartment.
3. Insert the 9V battery, ensuring correct polarity.
4. Close the battery compartment and keypad cover.

HIGH-CAPACITY ALKALINE BATTERY



ABS
Alloy Shell



100,000+
Rigorous Tests.



FCC CERTIFIED

24-Hour Amazon Online Tech Support.

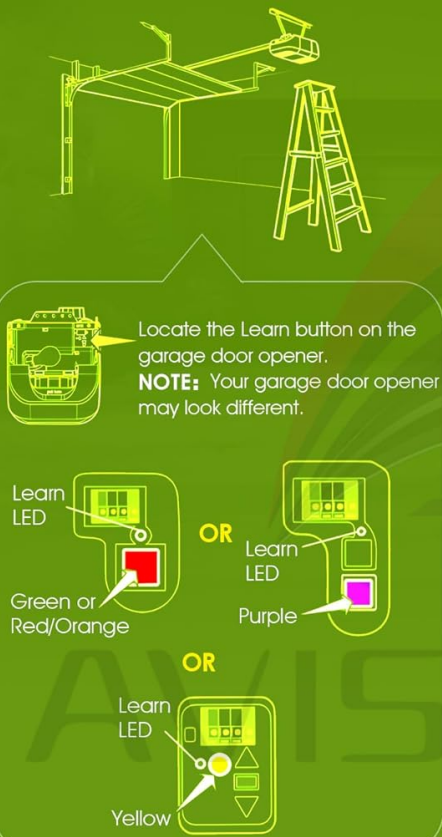
This image displays the keypad with its battery compartment open, illustrating the insertion of the 9V alkaline battery for power.

3.2 Programming Your Keypad

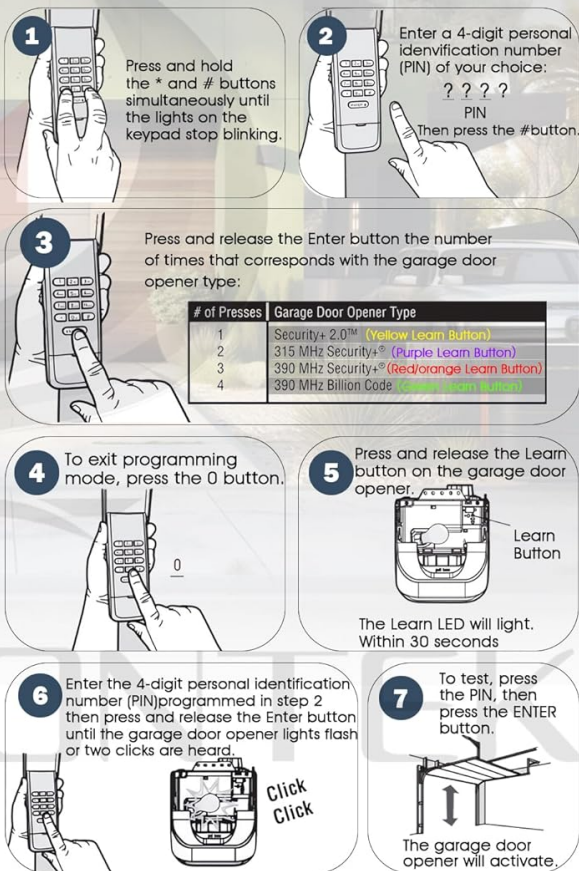
Before programming, locate the 'Learn' button on your garage door opener motor unit. The color and location of this button may vary depending on your opener model.


EASY TO SET UP AND SYNC

PREPARE



PROGRAM INITIAL PIN



 To program the Keyless Entry to more than one garage door opener, repeat the steps above using a new PIN for each additional garage door opener.
To test operation, enter the PIN then press the ENTER button, the door opener will activate. The keypad will remain for 20 seconds. During this 20 seconds, press the ENTER button, it can be used to stop, start or reverse the door.

This diagram provides a visual guide for the programming process, from identifying the learn button on the garage door opener to setting up the personal identification number (PIN) on the keypad.

- 1. Prepare:** Locate the 'Learn' button on your garage door opener. Refer to your garage door opener's manual if needed. The 'Learn' LED will illuminate when pressed.
- 2. Program Initial PIN:** On the keypad, press and hold the 'ENTER' button and the '#' button simultaneously until the keypad's backlight starts blinking.
3. Enter a 4-digit Personal Identification Number (PIN) of your choice, then press the '#' button.
4. Press and release the 'ENTER' button the number of times that corresponds with your garage door opener type (refer to the table below).
5. To exit programming mode, press the '0' button.
6. Press and release the 'Learn' button on the garage door opener. The LED on the opener will light for 30 seconds.
7. Within 30 seconds, enter your 4-digit PIN on the keypad, then press the 'ENTER' button. The garage door opener lights will flash twice, or you will hear two clicks, indicating successful programming.
8. To test, press your PIN, then press the 'ENTER' button. The garage door should activate.

Garage Door Opener Type and 'ENTER' Button Presses:

- **1 Press:** Security+ 2.0 (Yellow Learn Button)

- **2 Presses:** 315 MHz Security+ (Purple Learn Button)
- **3 Presses:** 390 MHz Security+ (Red/Orange Learn Button)
- **4 Presses:** 390 MHz (Green Learn Button)

Note: To program the Keyless Entry to more than one garage door opener, repeat the steps above using a new PIN for each additional garage door opener.

4. Operating Instructions

4.1 Opening/Closing the Garage Door

To operate your garage door using the keypad:

1. Enter your 4-digit PIN.
2. Press the 'ENTER' button.

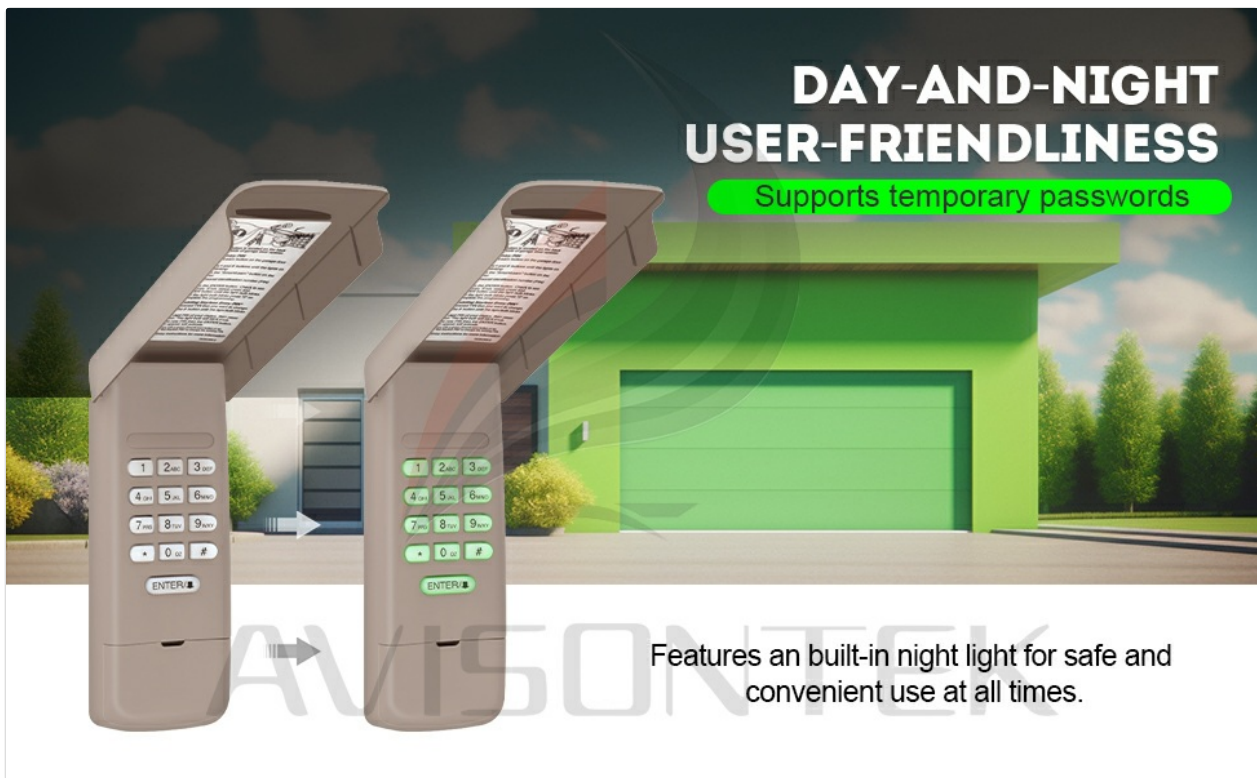
The garage door will open or close. The keypad features a backlit display for easy visibility in low-light conditions.



This image demonstrates the simple 4-PIN code operation for keyless entry, eliminating the need for a remote control.

4.2 Temporary PIN Function

The keypad supports temporary PINs, which can be useful for granting temporary access to visitors or service personnel without sharing your primary PIN. Consult your garage door opener's manual for specific instructions on setting up temporary access codes, as this feature is typically managed by the opener itself.



This image highlights the keypad's user-friendly design, including its backlit feature for clear visibility and operation during both day and night.

5. Maintenance

5.1 Battery Replacement

The keypad is powered by a 9V Alkaline battery. When the battery is low, the keypad's backlight may dim or fail to illuminate, or the keypad may become unresponsive. Replace the battery as described in Section 3.1. Use only high-quality 9V Alkaline batteries for optimal performance and longevity.

5.2 Cleaning

Clean the keypad's exterior with a soft, damp cloth. Do not use abrasive cleaners or solvents, as these can damage the finish or electronic components.

6. Troubleshooting

- **Keypad not responding:** Check the battery. Replace if necessary. Ensure the keypad is within range of the garage door opener.
- **Garage door not opening after programming:**
 - Verify that the correct number of 'ENTER' button presses was used during programming for your specific learn button color.
 - Ensure the 'Learn' button on the garage door opener was pressed and released correctly, and the PIN was entered within the 30-second window.
 - Confirm your garage door opener is compatible (not a Dip Switch Opener or Craftsman Series 100).
 - Try clearing all existing codes from your garage door opener (usually by holding the 'Learn' button for an extended period until the LED turns off) and then reprogram the keypad.
- **Limited range:** Ensure there are no obstructions between the keypad and the garage door opener.

Replace the battery if it is old.

- **Keypad lights are dim or not working:** Replace the 9V battery.

7. Product Specifications

PRODUCT PARAMETER

Model **878MAX**



Working Range
164 Feet

Frequency
310/315/390MHZ

Channel
5

Battery-Model
9V 6F22

Shell Material
ABS

Product Size
11.8* 2.51* 1.1 Inches

Product weight
0.33Lbs

Warranty
3 Years

Colour
Brown

Code
Rolling Code.

This image provides a visual summary of the keypad's key product parameters and technical specifications.

Parameter	Value
Model	878MAX
Working Range	164 Feet
Frequency	310/315/390MHZ
Channel	5
Battery Model	9V 6F22 (Alkaline)
Shell Material	ABS

Product Size	11.8" x 2.51" x 1.1" Inches
Product Weight	0.33 lbs
Color	Brown
Code Type	Rolling Code

8. Warranty Information

Your Avisontek 878MAX Universal Wireless Garage Door Keypad comes with a **3-Year Warranty**. This warranty covers defects in materials and workmanship under normal use. For warranty claims or further details, please contact customer support.

9. Customer Support

For any questions, technical assistance, or support needs, please contact Avisontek customer service. We offer **24-hour Amazon Online Tech Support** to assist you.

Please refer to your Amazon order details for specific contact information or visit the Avisontek brand store on Amazon.



24 HOURS
Amazon Online Tech Support



Certified by North American FCC



3 YEARS
3-Year-War-Ranty Life-Time Service



15 YEARS
Manufacturing Experience
30 R&D Engineers

This image highlights the available customer support, product certifications, and warranty period for the keypad.

© 2025 Avisontek. All rights reserved.