



[Manuals.plus](#) /

› [PPOLB](#) /

› PPOLB 48-Inch Tow-Behind Plug Aerator Instruction Manual

PPOLB PPTB-0002

PPOLB 48-Inch Tow-Behind Plug Aerator Instruction Manual

Model: PPTB-0002

1. INTRODUCTION

This manual provides essential instructions for the safe assembly, operation, and maintenance of your PPOLB 48-inch Tow-Behind Plug Aerator. Please read this manual thoroughly before using the equipment to ensure proper function and longevity.

The PPOLB 48-inch Tow-Behind Plug Aerator is designed to efficiently aerate lawns, allowing water, nutrients, and air to penetrate the soil more effectively. It features a 48-inch working width, 32 heat-treated steel pole shovels for up to 3 inches of soil penetration, a universal hitch for various towing vehicles, and a weight tray capable of holding up to 330 lbs for enhanced penetration.



Image 1.1: The PPOLB 48-inch Tow-Behind Plug Aerator, showcasing its orange painted galvanized steel construction and tines.

2. SAFETY INFORMATION

WARNING: Failure to follow these safety instructions may result in serious injury or property damage.

- Always read and understand the entire instruction manual before assembly or operation.
- Wear appropriate personal protective equipment (PPE), including safety glasses, gloves, and sturdy footwear, during assembly and operation.
- Ensure all fasteners are securely tightened before each use. Regularly check for loose bolts or damaged parts.
- Keep hands, feet, and clothing away from moving parts, especially the aerator tines.
- Do not allow children or untrained individuals to operate or be near the equipment during use.
- Operate the aerator only with a suitable towing vehicle (lawn tractor, ATV, UTV) that can safely handle the weight and pull of the aerator.
- Never exceed the recommended weight capacity of the tray (330 lbs). Distribute weight evenly.
- Be aware of your surroundings. Avoid operating on steep slopes or uneven terrain where the aerator could

tip over.

- Always engage the transport mode when moving the aerator over paved surfaces, driveways, or areas where aeration is not desired.
- Disconnect the aerator from the towing vehicle and ensure it is stable before performing any maintenance or adjustments.

3. ASSEMBLY

Assembly of the PPOLB 48-inch Tow-Behind Plug Aerator requires careful attention to detail. While the process is straightforward, reviewing all diagrams and instructions thoroughly is crucial to ensure correct component orientation and secure fastening.

3.1. Unpacking and Component Check

Upon receiving your aerator, carefully unpack all components. Verify that all parts are present and undamaged. If any parts are missing or appear damaged, contact customer support immediately before proceeding with assembly. Do not attempt to force misaligned parts or use damaged components.

3.2. General Assembly Guidelines

1. Lay out all components on a clean, flat surface.
2. Refer to the included assembly diagrams for specific steps and hardware identification. Pay close attention to the orientation of parts, especially the tines and the central bracket for the handle bolts.
3. Secure all bolts and nuts firmly. It is recommended to use appropriate tools for tightening to ensure stability.
4. Ensure the tines are correctly installed. Some users have noted that incorrect orientation can prevent them from sitting flush or cause issues during transport. The tines should be positioned to allow for proper soil penetration and retraction.



Image 3.1: Details of the universal hitch and the heat-treated steel tines.

4. OPERATION

4.1. Attaching to a Towing Vehicle

The aerator features a universal hitch designed to connect to most lawn tractors, ZTRs, and ATVs. Securely attach the hitch to your towing vehicle's drawbar using the appropriate pin or coupler.

48 TOW BEHIND PLUG AERATOR FOR MOST UTVS & ATVS



UTV



ATV



**MULTI-PURPOSE
TRACTOR**

Image 4.1: The aerator connected to a lawn tractor, demonstrating its universal hitch compatibility with various vehicles like UTVs and ATVs.

4.2. Adding Weight for Penetration

For optimal soil penetration, especially in compacted soil, utilize the sturdy weight tray. The tray can hold up to 330 lbs of additional weight (e.g., concrete blocks, sandbags). Distribute the weight evenly across the tray.



ADDED UP TO 330 LBS

Thickened counterweight tray and side panels for greater load bearing capacity and strength, effectively promoting the working environment

Image 4.2: The aerator with concrete blocks on its tray, illustrating the capacity to add up to 330 lbs for increased soil penetration.

4.3. Transport and Working Modes

The aerator features an adjustable cantilever transport handle to switch between transport and working modes. In transport mode, the wheels support the aerator, lifting the tines off the ground for movement over non-aeration areas. In working mode, the tines are lowered to penetrate the soil.

VERSATILE APPLICATION



LEAVES



PINE NEEDLES



GRASS



THATCH

Image 4.3: Illustration of the cantilever handle adjusting the aerator between transport mode (tines raised) and working mode (tines lowered).

4.4. Aeration Process

For best results, aerate when the soil is moist but not waterlogged. This allows the tines to penetrate easily and extract soil plugs effectively. Drive the towing vehicle at a slow, consistent speed across the lawn. Overlapping passes slightly will ensure complete coverage.

SOFT GENT DEPTH ADEQUATE AERATION

Effective Soil Penetration, Improves Aeration, Drainage and Nutrition

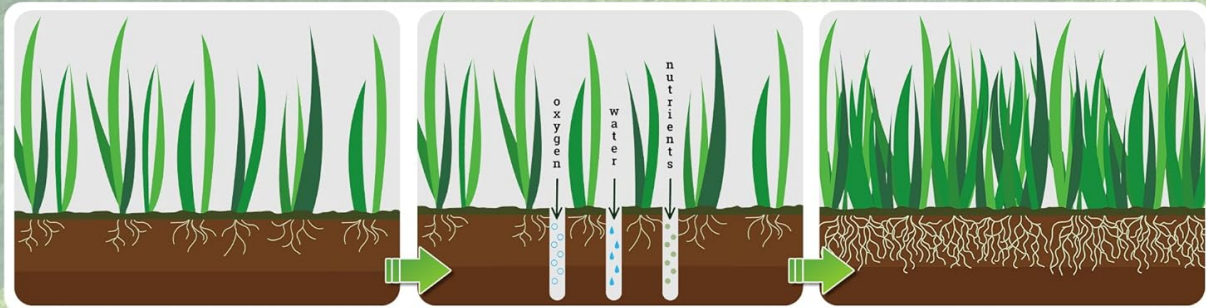


Image 4.4: The aerator actively working on a lawn, demonstrating effective soil penetration up to 3 inches, which improves aeration, drainage, and nutrient absorption.

5. MAINTENANCE

Regular maintenance ensures the longevity and optimal performance of your aerator.

- **Cleaning:** After each use, clean soil and debris from the tines and frame. This prevents rust and maintains tine sharpness.
- **Inspection:** Periodically inspect all bolts, nuts, and pins for tightness. Check the tines for wear or damage. Replace any worn or damaged parts immediately.
- **Lubrication:** Lubricate moving parts, such as wheel axles and pivot points, as needed to ensure smooth operation.
- **Storage:** Store the aerator in a dry, covered area to protect it from the elements. Ensure the tines are clean and dry before storage.

REINFORCED DESIGN MAKING THEM MORE DURABLE

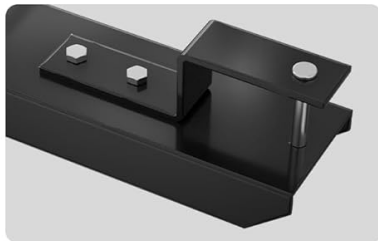


Image 5.1: The aerator in operation, emphasizing its reinforced design and durable components, which contribute to its long-term performance.

6. TROUBLESHOOTING

This section addresses common issues you might encounter with your aerator.

- **Tines not penetrating sufficiently:**

Ensure the soil is adequately moist. If the soil is too dry, water the area thoroughly a day before aerating. Add more weight to the tray, up to the maximum capacity of 330 lbs.

- **Tines hitting the ground in transport mode:**

Verify that the cantilever transport handle is fully engaged in the transport position. Check for any obstructions or damage to the linkage that prevents the wheels from fully lifting the tines. Ensure the wheels are properly inflated (if applicable) and securely attached.

- **Difficulty with assembly / Misaligned holes:**

Carefully review the assembly instructions and diagrams. Ensure you are using the correct hardware for each step. Do not force parts together. If holes do not align, double-check the orientation of the components. If issues persist, contact customer support for assistance.

- **Missing or damaged parts upon delivery:**

Inspect all package contents immediately upon receipt. If any parts are missing or damaged, do not proceed with assembly. Contact PPOLB customer support with your purchase details for replacement parts.

- **Uneven aeration:**

Ensure the weight on the tray is evenly distributed. Drive at a consistent speed and make slightly overlapping passes to ensure uniform coverage.

7. SPECIFICATIONS

Feature	Specification
Model Number	PPTB-0002
Working Width	48 inches
Number of Tines	32 heat-treated steel pole shovels
Penetration Depth	Up to 3 inches
Weight Tray Capacity	Up to 330 lbs
Hitch Type	Universal
Wheels	10.5-inch semi-pneumatic rubber tread tires
Construction Material	Orange painted all-steel construction
Product Dimensions	51.57 x 13.78 x 7.09 inches
Item Weight	76.4 pounds
Manufacturer	PPOLB



Type: 48" Tow Behind Plug Aerator **Handle Length:** 19.2"
Number of Tines: 32 **Panel Length:** 11.2"
Primary Material: Q235 Steel **Product Dimensions:**
load capacity: 330 lbs 48" x 39.5" x 34.8"

Image 7.1: Dimensional drawing providing key measurements of the aerator.

8. WARRANTY AND SUPPORT

For warranty information, product support, or to inquire about replacement parts, please contact PPOLB customer service. Refer to your purchase documentation for specific contact details or visit the official PPOLB store online.

PPOLB offers protection plans for extended coverage. Details regarding these plans can be found where the product was purchased.