



[Manuals.plus](#) /

> [NINIVISION](#) /

> NINIVISION 4K Digital Camera User Manual

## NINIVISION DC218L

# NINIVISION 4K Digital Camera User Manual

Model: DC218L

## INTRODUCTION

---

The NINIVISION 4K Digital Camera (Model DC218L) is designed for capturing high-quality photos and videos. Featuring a 64MP sensor and 4K video capabilities, it includes advanced functions such as autofocus, anti-shake technology, and a dual-lens system for versatile shooting. This manual provides detailed instructions for setup, operation, maintenance, and troubleshooting to help you maximize your camera's potential.



Figure 1: Front view of the NINIVISION 4K Digital Camera, showcasing its lens and compact design.

## PACKAGE CONTENTS

---

Please verify that all items listed below are included in your package:

- 1x 4K Digital Camera
- 1x 32GB SD Card
- 2x Rechargeable 1050mAh Batteries
- 1x Cradle Charger
- 1x Type-C Cable
- 1x User Manual
- 1x Lens Cap
- 1x Wrist Strap
- 1x Cleaning Cloth

- 1x Charging Stand



Figure 2: Visual representation of all items included in the camera package.

## SETUP

### 1. Battery Installation and Charging

The camera comes with two 1050mAh rechargeable batteries. Ensure batteries are fully charged before first use.

1. Open the battery compartment cover on the bottom of the camera.
2. Insert a battery into the compartment, ensuring the correct polarity as indicated inside.
3. Close the battery compartment cover securely.
4. To charge, place the battery into the charging stand and connect the Type-C cable to the stand and a power adapter.
5. The indicator light on the charging stand will show charging status.



Figure 3: Illustration of battery insertion and charging process using the provided cradle charger.

### 2. SD Card Installation

A 32GB SD card is included for storage. Ensure the camera is powered off before inserting or removing the SD card.

1. Locate the SD card slot, usually on the side or bottom of the camera.
2. Insert the 32GB SD card into the slot with the metal contacts facing the correct direction until it clicks into place.
3. To remove, gently press the card until it pops out.

## OPERATING INSTRUCTIONS

---

### 1. Power On/Off

Press and hold the power button (usually located on the top of the camera) to turn the camera on or off.

### 2. Dual Lens Operation (Front/Rear Camera)

The camera features both a rear and a front camera. Easily switch between them for selfies or vlogging.

- Locate the dedicated button for switching between front and rear lenses.
- Press this button to toggle between the two camera views.

**FHD 64MP  
WITH DUAL LENS**



**Ours: Rear Camera**



**Ours: Front Camera**



**Others: Complex Flip Screen**

Figure 4: Demonstrates the camera's dual-lens capability, showing both rear and front camera usage.

### 3. Photo and Video Modes

Use the mode dial to select between various shooting modes.

- **Photo Mode:** For capturing still images up to 64MP resolution.
- **Video Mode:** For recording 4K Ultra HD videos. The camera supports a pause function during video recording.

# ALL-IN-ONE PERFORMANCE FOR EVERY NEED



Photo



Video



Portrait



Setup



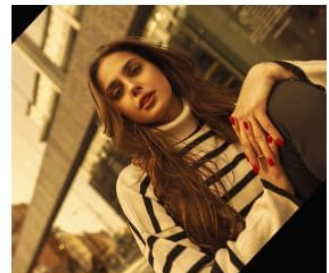
Night



Scenery



Slow-motion



Effects

Figure 5: Close-up of the camera's mode dial, indicating various shooting options like photo, video, and setup.

## 4. Autofocus and Digital Zoom

The camera features advanced autofocus and 16X digital zoom.

- **Autofocus:** The camera automatically adjusts focus to ensure sharp images.
- **16X Digital Zoom:** Use the zoom controls (often marked 'W' for Wide and 'T' for Telephoto) to zoom in or out on your subject.

# 16X DIGITAL ZOOM



Figure 6: Illustrates the camera's autofocus capability and the effect of 16X digital zoom on an image.

## 5. Flashlight

The built-in flashlight improves performance in low-light conditions.

- Activate the flashlight via the camera's menu settings or a dedicated button, if available.

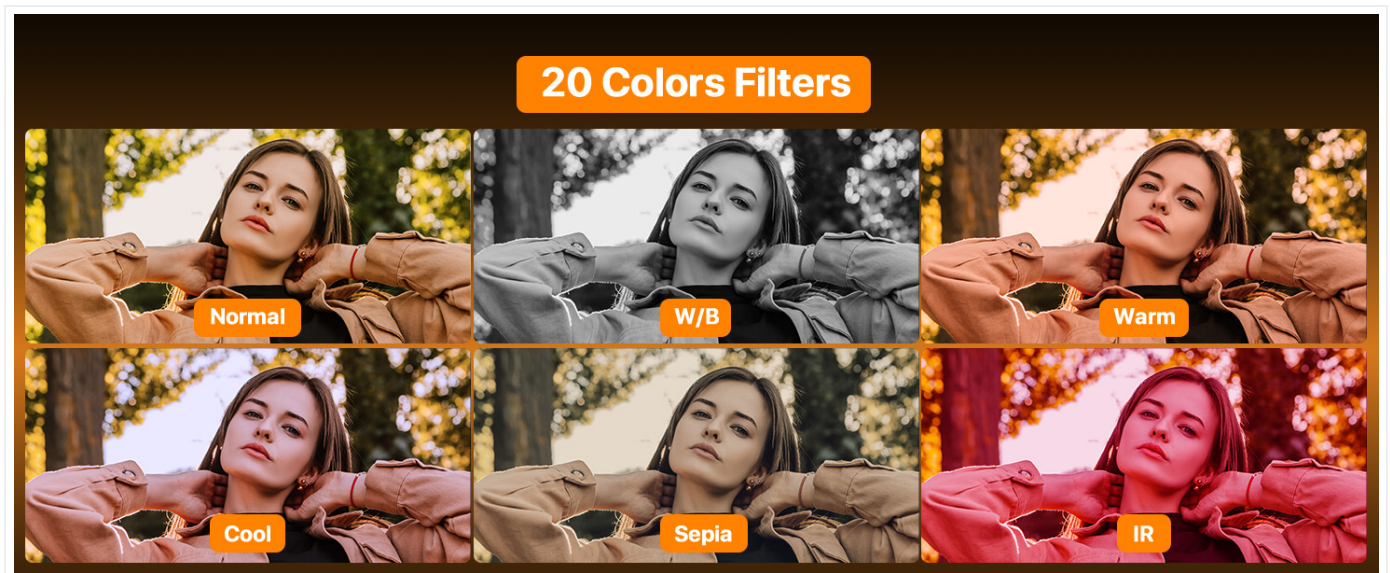


Figure 7: Shows the camera's hidden flashlight in action, illuminating a subject in low light.

## 6. Webcam Functionality

Connect the camera to a computer to use it as a webcam for live streaming or video calls.

1. Connect the camera to your computer using the provided Type-C cable.
2. Select "Webcam Mode" on the camera's screen if prompted.
3. Your computer should recognize the camera as a webcam.

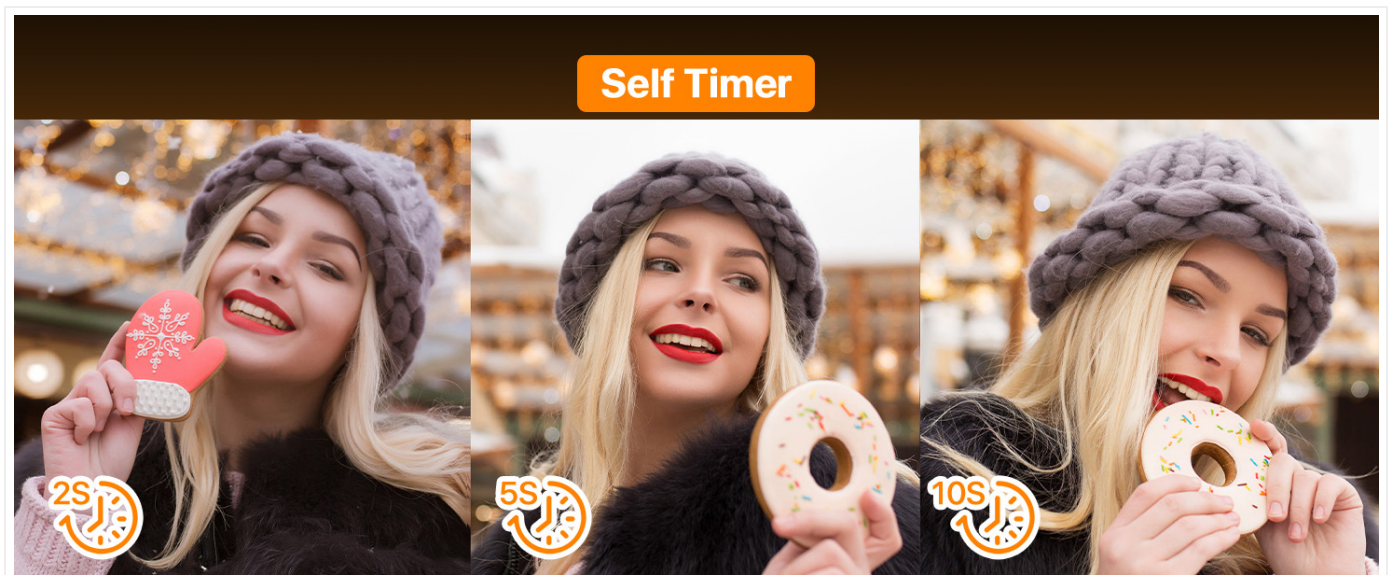


Figure 8: Demonstrates the camera connected to a laptop, functioning as a webcam for streaming.

## 7. Multifunction Modes

Explore various creative features:

- **Timestamp:** Add date and time to your photos/videos.
- **Exposure Compensation:** Adjust brightness from -3.0 to +3.0.
- **Slow Motion:** Record videos in slow motion.
- **Loop Recording:** Continuously record, overwriting older files when storage is full.
- **Continuous Shooting:** Capture multiple photos in quick succession.
- **Time-Lapse:** Set intervals (2/5/10 seconds) for automatic photo capture.

- **Filter Effects:** Apply over 20 different filters to your images.



Figure 9: Examples of various color filters available on the camera to enhance photographic creativity.



Figure 10: Depicts the continuous shooting feature, capturing a sequence of actions.



Figure 11: Illustrates the self-timer function, showing different delay options for capturing photos.

## MAINTENANCE

---

- **Cleaning the Lens:** Use the provided cleaning cloth or a soft, lint-free cloth specifically designed for camera lenses. Gently wipe the lens in a circular motion. Avoid using harsh chemicals.
- **Cleaning the Body:** Wipe the camera body with a soft, dry cloth. For stubborn dirt, slightly dampen the cloth with water.
- **Storage:** When not in use for extended periods, remove the batteries and store the camera in a cool, dry place away from direct sunlight and extreme temperatures.
- **Battery Care:** Fully charge batteries before storage and recharge them every few months to maintain their lifespan.

## TROUBLESHOOTING

---

Problem	Possible Cause	Solution
Camera does not power on.	Battery is dead or incorrectly inserted.	Ensure batteries are fully charged and inserted with correct polarity.
Images are blurry.	Lens is dirty; camera not focusing; insufficient light.	Clean the lens. Ensure autofocus is enabled. Use flashlight in low light. Hold camera steady.
SD card error.	SD card is full, corrupted, or incorrectly inserted.	Format the SD card (this will erase data). Reinsert the card. Try a different SD card.
Video recording stops unexpectedly.	SD card speed is too slow; card is full.	Use a high-speed SD card (Class 10 or higher). Delete unnecessary files.

## SPECIFICATIONS

---

Feature	Detail
Model Name	DC218L
Brand	NINIVISION
Product Dimensions	2.5 x 4.5 x 2.75 inches
Item Weight	1.32 pounds
Batteries	2 Rechargeable 1050mAh Batteries <i>(Note: Product specifications list AAA, but feature bullets indicate 1050mAh rechargeable batteries are included.)</i>
Photo Sensor Technology	CMOS
Supported File Format	AVI, JPG
Image Stabilization	Digital (6-Axis Stabilization)

Feature	Detail
Maximum Aperture	2.2 f
Digital Zoom	16X
Video Resolution	4K UHD
Photo Resolution	64MP
Display Size	2.8-inch IPS Display

## WARRANTY AND SUPPORT

NINIVISION provides a 12-month hassle-free warranty for this product, covering manufacturing defects from the date of purchase. For any inquiries, technical assistance, or warranty claims, please contact our customer support team.

- **Online Support:** Available 24 hours a day. Please visit the official NINIVISION website for contact details.
- **Email Support:** Refer to the contact information provided in your product packaging or on the official website.



Figure 12: Image representing customer support availability.