



[Manuals.plus](#) /

› [LELO](#) /

› [LELO LIV 3 App-Controlled G-Spot Vibrator User Manual](#)

LELO LIV 3 (Model 9776)

LELO LIV 3 App-Controlled G-Spot Vibrator User Manual

Model: 9776

INTRODUCTION

This manual provides comprehensive instructions for the safe and effective use of your LELO LIV 3 App-Controlled G-Spot Vibrator. Please read this manual thoroughly before first use and retain it for future reference.



Image: The LELO LIV 3 vibrator, its elegant packaging, and a smartphone showing the companion app.

WHAT'S IN THE BOX

Your LELO LIV 3 package includes the following items:

- LELO LIV 3 App-Controlled G-Spot Massager
- USB Charging Cable
- Water-based Lubricant Sachet (5 ml / 0.17 fl. oz.)
- Warranty Registration Card
- Satin Pouch for storage
- User Manual (this guide)

LIV™ 3
app-controlled g-spot massager



MANUAL
how to use guide



MOISTURIZER SACHET
water-based lubricant
5 ml / 0.17 fl. oz.



WARRANTY CARD
verifies product authenticity



CHARGING CORD
USB cable

SATIN POUCH
for storage

Image: A visual representation of all items included in the LELO LIV 3 product box.

PRODUCT OVERVIEW

The LELO LIV 3 is a G-spot vibrator designed for precise internal stimulation. It features a curved shape and is made from ultra-smooth, body-safe silicone. The device is app-connected, offering enhanced control and additional modes.

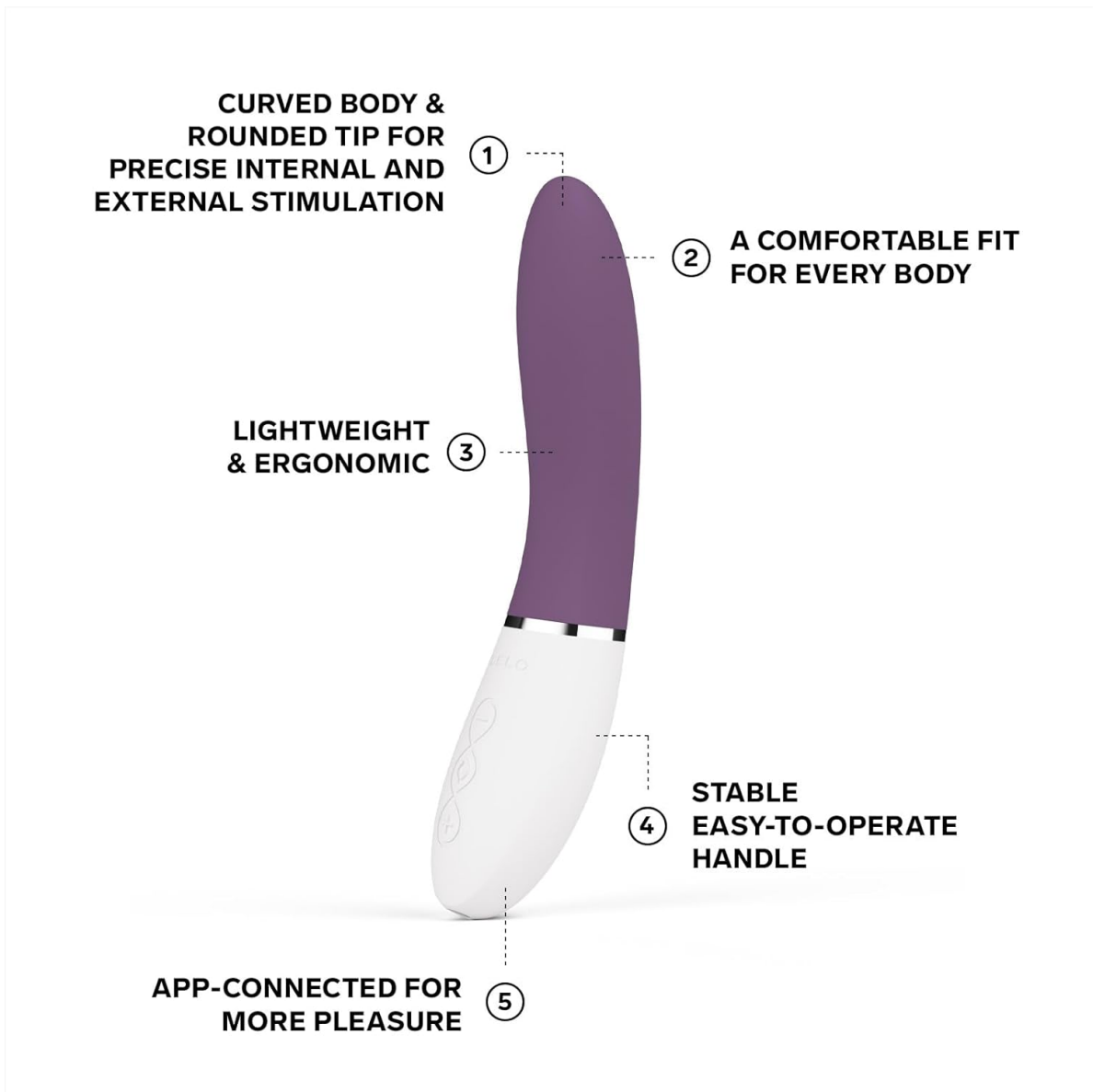


Image: Diagram illustrating the design and ergonomic features of the LELO LIV 3.

- **Curved Body & Rounded Tip:** Designed for precise internal and external stimulation.
- **Ergonomic Design:** Lightweight and comfortable to hold.
- **App-Connected:** Connects via Bluetooth for additional control and modes.
- **Material:** Ultra-smooth, body-safe silicone.

SETUP

Initial Charging

Before the first use, fully charge your LELO LIV 3 for 2 hours. The device is USB-rechargeable.

- Connect the provided USB charging cable to the charging port on the device.
- Plug the other end of the USB cable into a USB power adapter (not included) or a computer's USB port.
- The indicator light will show charging status (refer to the device's specific light indications for full charge).

App Connection

To unlock additional settings and control options, connect your LIV 3 to the LELO app via Bluetooth.

1. Download the LELO app from your smartphone's app store.
2. Ensure Bluetooth is enabled on your smartphone.
3. Open the LELO app and follow the on-screen instructions to pair your LIV 3 device.



ticking all the boxes



	APP-CONNECTED connect your device to set up your pleasure on the LELO app		100% WATERPROOF perfect for the bath and shower
	CERTIFIED BODY-SAFE the highest standard of safety and construction		EXTRA-SOFT SILICONE premium silicone that feels silky to the touch
	8 SETTINGS from a teasing murmur to a satisfying pulse		SIZE AND WEIGHT 169 x 35 x 42 mm / 6.65 x 1.38 x 1.65 in Insertable length: 100 mm / 3.94 in Only product: 93 g / 3.28 oz
	ISO 3533 SAFETY CERTIFIED indulge in pleasure with toys made at the highest possible safety standard		

Image: Step 1 of usage, showing app download and lubricant application.

OPERATING INSTRUCTIONS

The LELO LIV 3 offers 8 powerful pleasure settings and can be controlled manually or via the LELO app.

How to use

BEFORE THE FIRST USE

charge your device for 2 hours

TO TURN IT ON

press the + or the (()) button

TO SWITCH BETWEEN SETTINGS

press the (()) button

TO ADJUST THE INTENSITY

use the + or the - button

TO TURN IT OFF

press and hold the (()) button

APP-CONNECTED

connect via Bluetooth to unlock additional settings



Image: Visual guide for basic button operations of the LELO LIV 3.

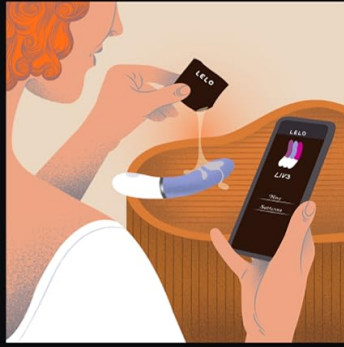
Manual Operation

- **To Turn On:** Press the + or the (()) button.
- **To Switch Between Settings:** Press the (()) button. There are 8 distinct vibration patterns.
- **To Adjust Intensity:** Use the + or - button.
- **To Turn Off:** Press and hold the (()) button.

App-Controlled Operation

Once connected via Bluetooth to the LELO app, you can access additional modes and precise control over vibration patterns and intensity.

- The app unlocks two additional modes: *Finish Me Off* and *Out Of Control*.
- Use the app interface to select patterns, adjust intensity, and explore personalized experiences.



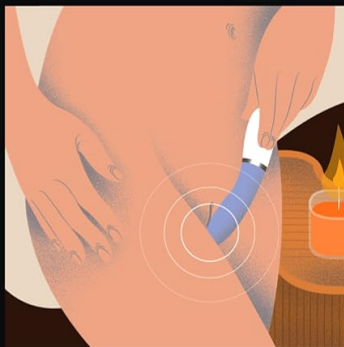
how to use?

STEP 1

Prep

First, download the LELO app to activate the exclusive modes. Then, apply LELO Personal Moisturizer to both your body and the toy for enhanced pleasure.

Image: Step 2 of usage, demonstrating engagement with the device.



STEP 2

Engage

Turn it on, and listen to your body as you slowly approach your erogenous zone.

Image: Step 3 of usage, illustrating exploration of vibration modes.

MAINTENANCE

Cleaning

The LELO LIV 3 is IPX7 certified waterproof, making it safe for cleaning with water.

- Always clean the device thoroughly before and after each use.
- Wash with warm water and a toy cleaner or mild soap.
- Rinse thoroughly and pat dry with a lint-free cloth.
- Do not use cleaners containing alcohol, petroleum, or acetone, as these may damage the silicone.

Storage

Store your LELO LIV 3 in the provided satin pouch in a clean, dry place, away from direct sunlight and extreme temperatures.

- Avoid storing with other toys made of different materials to prevent material degradation.
- Ensure the device is fully charged before long-term storage to maintain battery health.

Travel Lock

To prevent accidental activation during travel, engage the travel lock feature.

- To lock: Hold the + and - buttons simultaneously for 3 seconds.

- To unlock: Hold the + and - buttons simultaneously for 3 seconds.



Useful information



CHARGING TIME / USE TIME

2 h both



TRAVEL LOCK

to unlock, hold + and – for 3 seconds



USB RECHARGEABLE & WATERPROOF

enjoy unlimited climaxes anytime, anywhere



STAND BY

up to 90 days

Image: Summary of key operational and maintenance information, including charging and travel lock.

TROUBLESHOOTING

Problem	Solution
Device does not turn on.	Ensure the device is fully charged. Check if the travel lock is engaged (see Maintenance section).
Vibrations are weak or inconsistent.	Recharge the device. If the issue persists, contact LELO customer support.
Cannot connect to the LELO app.	Ensure Bluetooth is enabled on your smartphone. Make sure the device is turned on. Try restarting both the device and the app. Ensure your app is updated to the latest version.

Problem	Solution
Device gets warm during use.	A slight warming is normal during operation. If it becomes excessively hot or uncomfortable, discontinue use and contact support.

SPECIFICATIONS

Model Number	9776
Material	Body-safe Silicone, ABS Plastic
Dimensions (L x W x H)	169 x 35 x 42 mm (6.65 x 1.38 x 1.65 inches)
Insertable Length	100 mm (3.94 inches)
Weight	93 g (3.28 oz)
Battery	1 Lithium Polymer (included)
Charging Time	2 hours
Use Time	Up to 2 hours (depending on settings)
Standby Time	Up to 90 days
Waterproof Rating	IPX7 (fully submersible)
Vibration Settings	8 patterns (additional modes via app)



1 - EIGHT POWERFUL PLEASURE SETTINGS
Choose from eight vibration patterns, ranging from gentle murmurs to intense pulses

2 - APP-CONNECTED
Unlock two extra modes through the app for a customized pleasure experience

3 - MADE FOR DEEPLY PROFOUND PLEASURE
Smooth and slightly curved, designed for perfect Gspot stimulation

4 - PERFECT FIT FOR EVERYONE
Ideal size for both beginners and experienced users

Image: Summary of LELO LIV 3 features and technical specifications.

WARRANTY & SUPPORT

LELO products are covered by a 1-year warranty from the date of purchase against manufacturing defects. Please refer to the warranty registration card included in your package for full details and registration instructions.

For product support, troubleshooting assistance, or warranty claims, please visit the official LELO website or contact their customer service directly. You can find contact information on the LELO website: www.lelo.com

IMPORTANT SAFETY INFORMATION

Please read and follow these safety guidelines to ensure safe use of your LELO LIV 3:

- This device is for adult use only.
- Do not use if the silicone appears damaged or compromised.
- Discontinue use immediately if you experience any discomfort or pain.
- Consult a healthcare professional if you have any medical concerns or conditions before using this product.
- Statements regarding dietary supplements have not been evaluated by the FDA and are not intended to diagnose, treat, cure, or prevent any disease or health condition.

© 2024 LELO. All rights reserved.

