

## Sporvet ST-6653

# Sporvet ST-6653 Cordless Car Vacuum Cleaner User Manual

Model: ST-6653

## 1. INTRODUCTION

---

Thank you for choosing the Sporvet ST-6653 Cordless Car Vacuum Cleaner. This versatile device is designed for efficient cleaning in various environments, including cars, homes, and offices. It features a 4-in-1 functionality, offering vacuuming, blowing, inflating, and pumping capabilities. With its powerful brushless motor and portable design, maintaining cleanliness is convenient and effective.



Image 1.1: Sporvet ST-6653 Cordless Car Vacuum Cleaner and included accessories.

## 2. PACKAGE CONTENTS

Please verify that all items are present in your package:

- Sporvet ST-6653 Vacuum Cleaner
- Multi-surface Nozzle
- Type-C Charging Cable
- Flat Brush
- Flat Suction Nozzle
- Round Brush
- Long Blowing Nozzle
- Short Blowing Nozzle
- Large Inflation Nozzle
- Air Suction Nozzle
- Small Inflation Nozzle
- Storage Box



## WHAT YOU GET

- 1 Multi-surface Nozzle
- 2 Type-C Cable
- 3 Vacuum Cleaner
- 4 Flat Brush
- 5 Flat Suction Nozzle
- 6 Round Brush
- 7 Long Blowing Nozzle
- 8 Short Blowing Nozzle
- 9 Large Inflation Nozzle
- 10 Air Suction Nozzle
- 11 Small Inflation Nozzle
- 12 Box

Image 2.1: All components included in the package.

### 3. PRODUCT FEATURES

- **Powerful Suction:** Equipped with a brushless motor, offering three adjustable suction modes: High (16000PA), Medium (12000PA), and Low (6000PA).
- **Multi-functional:** Performs vacuuming, blowing, inflating, and pumping tasks.
- **Cordless and Portable:** Weighs approximately 1.5 lbs (0.68 kg) for easy handling and storage.
- **Long Battery Life:** Integrated 6000mAh lithium battery provides up to 30 minutes of operation on low mode, 18 minutes on medium, and 12 minutes on high.
- **Quick Charging:** Fully charges in 3-3.5 hours via Type-C cable.
- **Low Noise Operation:** Operates at a noise level below 70dB for a quieter cleaning experience.
- **HEPA Filtration:** Features a HEPA filter for efficient dust and allergen capture.

# ALL-IN-ONE PORTABLE

## CAR VACUUM CLEANER



### HEPA Filter & Waste Bin

Efficient cleaning of seats, sofas, and more.

### Suction Nozzle & Brush

For window frames, doors, seats, cupboard corners, drawers and irregular surface.



### Floor Brush

For floor, car trunk, mattress and all kinds of large flat surface.

### Blow Nozzle & Brush

For cleaning keyboards, windows, and other surfaces with fine dust.



Image 3.1: Illustration of the vacuum's strong suction capability.



Image 3.2: The 4-in-1 functionality of the vacuum cleaner.

## 4. SETUP AND CHARGING

### 4.1 Initial Charging

1. Before first use, fully charge the vacuum cleaner.
2. Connect the provided Type-C charging cable to the charging port on the vacuum cleaner and to a suitable USB power adapter (not included).
3. The battery indicator light will illuminate red during charging.
4. Charging is complete when the indicator light turns green. A full charge typically takes 3-3.5 hours.



Image 4.1: Charging the Sporvet ST-6653 vacuum cleaner.

## 4.2 Attaching Accessories

Select the appropriate nozzle or brush for your cleaning task. Attach it firmly to either the suction inlet or the blowing outlet of the vacuum cleaner, depending on the desired function.

## 5. OPERATION

### 5.1 Power On/Off and Mode Selection

1. Press the power button once to turn on the vacuum cleaner at the lowest suction mode (6000PA). The indicator light will be green.
2. Press the power button a second time to switch to medium suction mode (12000PA). The indicator light will turn yellow.
3. Press the power button a third time to activate high suction mode (16000PA). The indicator light will turn red.
4. Press the power button a fourth time to turn off the device.

### 5.2 Using the Vacuum Function

Attach the desired suction nozzle (e.g., Flat Suction Nozzle for crevices, Flat Brush for soft surfaces) to the front inlet. Select the appropriate suction power and move the vacuum over the area to be cleaned. The HEPA filter effectively captures dust and debris.



Image 5.1: Suction capabilities for various types of debris.

### 5.3 Using the Blowing Function

Attach a blowing nozzle (e.g., Long Blowing Nozzle for general blowing, Short Blowing Nozzle for delicate areas like camera lenses) to the rear outlet. Use this function to clear dust from keyboards, car vents, or other hard-to-reach areas.

## 5.4 Using the Inflating Function

Attach the Large Inflation Nozzle for air mattresses or the Small Inflation Nozzle for swimming rings to the rear outlet. Turn on the device to inflate items.

## 5.5 Using the Pumping Function (Vacuum Storage Bags)

Attach the Air Suction Nozzle to the rear outlet. Connect it to a vacuum storage bag to remove air and compress contents.

## 6. MAINTENANCE AND CLEANING

Regular cleaning of the dust cup and filter is essential to maintain optimal performance and extend the lifespan of your vacuum cleaner.

1. **Separate Components:** Twist and detach the dust cup from the main body of the vacuum cleaner. Remove the HEPA filter from the dust cup.
2. **Empty Dust Cup:** Dispose of collected debris from the dust cup into a waste bin.
3. **Wash Filter and Cup:** Rinse the HEPA filter and dust cup under running water. Ensure all dust and particles are removed.
4. **Air Dry:** Allow the filter and dust cup to air dry completely before reassembling. Do not use the vacuum cleaner with wet components.

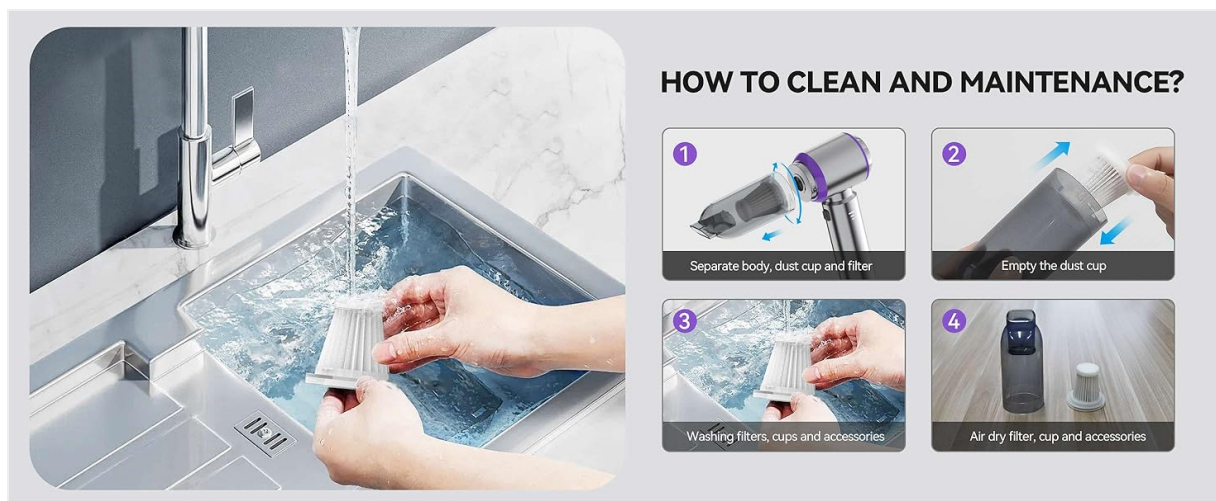


Image 6.1: Steps for cleaning and maintaining the vacuum cleaner.

## 7. TROUBLESHOOTING

If you encounter issues with your Sporvet ST-6653, please refer to the following common problems and solutions:

Problem	Possible Cause	Solution
Vacuum does not turn on	Battery is depleted	Charge the vacuum cleaner fully (refer to Section 4.1).

Problem	Possible Cause	Solution
Weak suction power	Dust cup is full or filter is clogged	Empty the dust cup and clean the HEPA filter (refer to Section 6).
Vacuum does not charge	Charging cable or adapter issue; Battery fault	Ensure the Type-C cable is securely connected and the adapter is functional. Try a different cable or adapter. If the issue persists, contact customer support.
Unusual noise during operation	Obstruction in nozzle or air path	Turn off the vacuum and check for any blockages in the nozzles, dust cup, or air inlets/outlets. Remove any obstructions carefully.

## 8. SPECIFICATIONS

Feature	Detail
Brand	Sporvet
Model	ST-6653
Special Feature	Cordless, HEPA, Portable
Filter Type	HEPA Filter
Power (Wattage)	120 watts
Suction Power	6000PA (Low), 12000PA (Medium), 16000PA (High)
Battery Type	Lithium-Ion (6000mAh)
Charging Time	3-3.5 Hours
Operating Time	12-30 minutes (depending on mode)
Dust Cup Capacity	0.2 Liters
Noise Level	Under 70 Decibels
Product Dimensions	6"L x 3"W x 8"H (15.24cm L x 7.62cm W x 20.32cm H)
Item Weight	1.5 pounds (0.68 kg)
Color	Silver

## 9. WARRANTY AND SUPPORT

Sporvet products are manufactured with quality and reliability in mind. For specific warranty information regarding your ST-6653 Cordless Car Vacuum Cleaner, please refer to the warranty card included in your product packaging or contact Sporvet customer support directly.

If you require assistance, have questions, or need to report an issue, please contact our customer support team through the retailer's platform or the official Sporvet website. Please have your model number (ST-6653) and

purchase date available when contacting support.