



[Manuals.plus](#) /

> [PANDAAR](#) /

> PANDAAR Wireless Intercom Doorbell S1 User Manual

## PANDAAR S1

# PANDAAR Wireless Intercom Doorbell S1 User Manual

Model: S1 | ASIN: B0D9W19131

## 1. INTRODUCTION

Thank you for choosing the PANDAAR Wireless Intercom Doorbell S1. This manual provides essential information for the proper setup, operation, and maintenance of your new device. Please read these instructions carefully before use to ensure optimal performance and longevity of the product.

## 2. PRODUCT OVERVIEW

The PANDAAR Wireless Intercom Doorbell S1 offers convenient two-way communication with a long transmission range, suitable for various environments including homes, offices, and classrooms. It features a full-duplex communication system, allowing for real-time conversations.

### Key Features:

- **Easy to Use:** Pre-paired units for immediate use after charging.
- **Full-Duplex Communication:** Supports real-time two-way conversations without holding a button.
- **Long-Range & Anti-Interference:** Up to 984 feet (300 meters) in open areas, with encrypted communication to prevent crosstalk.
- **Durable Design:** IP44 waterproof rating, operational in temperatures from -20°C to 50°C (-4°F to 122°F).
- **Extended Battery Life:** Outdoor unit lasts 3 to 6 months on a full charge; indoor unit includes a charging dock for continuous power.
- **Adjustable Volume:** Four-level volume adjustment for various scenarios.
- **Flexible Expansion:** Supports pairing with multiple indoor and outdoor units. Indoor units can communicate with each other.



This image displays the PANDAAR Wireless Intercom Doorbell S1, featuring the compact outdoor unit on the left and the indoor unit with its charging base on the right. Both units are white and have speaker grilles and control buttons.

**SIMPLE DESIGN  
BUT NOT SIMPLE FUNCTIONALITY**

- Duplex intercom**  
Communicate like making a phone call
- 984ft Intercom distance**  
300m in open areas, 1 to 4 floors in a building
- NO WIFI and NO call charges**  
Especially suitable for areas with poor signal
- One-button calling**  
Easy to operate, large button is easier to press
- Type-C charging jack**  
Charging is more convenient and faster

**To save power, outdoor machine will return to sleeping mode if it does not detect action within 25 seconds.**

This image highlights the core functionalities of the PANDAAR Wireless Intercom Doorbell S1, including its duplex intercom capability, 984ft communication range, independence from Wi-Fi, simple one-button calling, and convenient Type-C charging.

## 3. SETUP

### 3.1 Charging the Units

Before initial use, ensure both the outdoor and indoor units are fully charged.

- **Outdoor Unit:** Contains a built-in 800mAh Lithium Polymer battery. A full charge can last 3 to 6 months depending on usage. Charge using a Type-C cable.
- **Indoor Unit:** Comes with a charging dock. Place the indoor unit into the dock for continuous charging. This prevents power outages from affecting communication.



This image illustrates the charging methods for the PANDAAR Wireless Intercom Doorbell S1. The indoor unit is shown docked in its charging base, while the outdoor unit is connected via a Type-C charging cable.

### 3.2 Pairing Units

Your PANDAAR Wireless Intercom Doorbell units are typically pre-paired at the factory for immediate use. If you purchase additional indoor units or need to re-pair them, follow these steps:

1. Ensure both indoor units (e.g., Unit D and Unit E) are powered on.
2. On one indoor unit (Unit D), press the call button.
3. Listen for a voice announcement of "Successful" from Unit E, indicating successful pairing.

**Note:** The outdoor unit must initiate a call to an indoor unit; indoor units cannot proactively call the outdoor unit. The system supports one-on-one calls only; group calls are not possible.

# EXPANDABLE INTERCOM SYSTEM

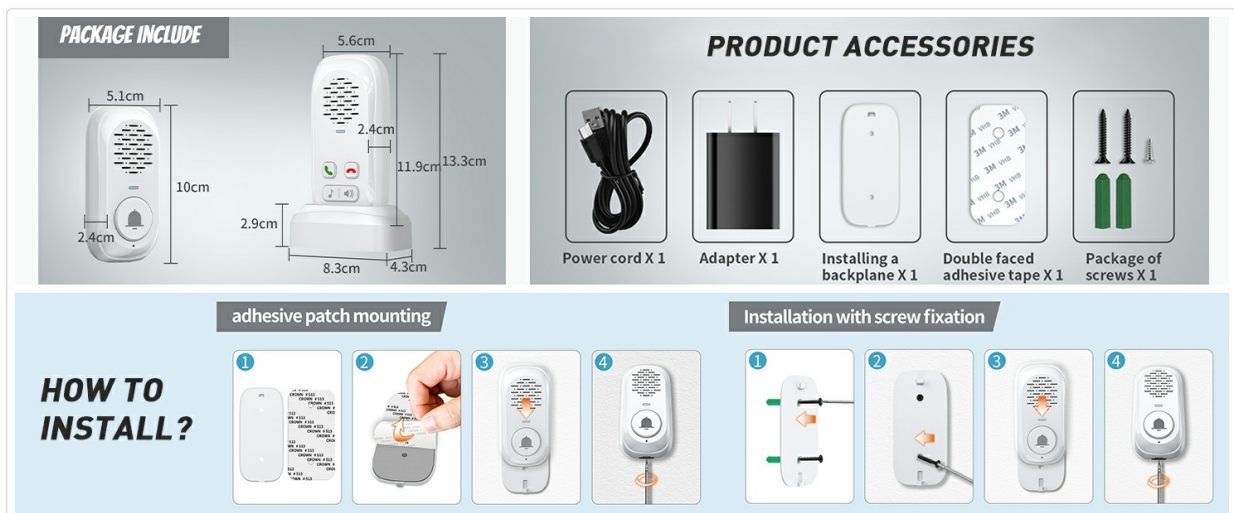
Must start any conversation by pressing the talk button on the outdoor unit



This diagram illustrates the expandable nature of the PANDAAR Wireless Intercom System. It shows one outdoor unit communicating with several indoor units placed throughout a multi-room environment, highlighting the system's flexibility.

## 3.3 Installation

The outdoor unit can be installed using either adhesive patches or screws for fixation.



This image provides a visual guide for installing the PANDAAR Wireless Intercom Doorbell S1. It details two installation

methods: using an adhesive patch for easy mounting and screw fixation for a more permanent attachment, with clear steps for each.

Refer to the diagram above for detailed steps on both adhesive patch mounting and screw fixation. Ensure the outdoor unit is placed in a location where it has a clear line of sight or minimal obstructions to the indoor unit(s) for optimal range.

## 4. OPERATING INSTRUCTIONS

The PANDAAR Wireless Intercom Doorbell S1 is designed for straightforward communication.

### 4.1 Visitor Communication

1. **Step 1: Visitor Call:** A visitor presses the CALL button on the outdoor unit. The indoor unit will ring.
2. **Step 2: Answer Call:** On the indoor unit, press the answer button to establish communication.
3. **Step 3: Two-Way Conversation:** Both parties can speak directly without needing to hold down a talk button, thanks to the full-duplex system.
4. **Step 4: End Call:** Press the hang-up button on the indoor unit to disconnect the conversation.



This image presents a four-step visual guide on using the PANDAAR Wireless Intercom Doorbell S1. It depicts a visitor initiating a call, the indoor unit ringing, both parties engaging in two-way communication, and finally, ending the call.

## 4.2 Volume Adjustment

The indoor unit features a four-level volume adjustment function. Use the dedicated volume button to cycle through the available volume settings to suit your environment.

## 4.3 Indoor Unit Intercom

If you have multiple indoor units, they can communicate with each other. To initiate an intercom call between indoor units, press the call button on the originating indoor unit. The receiving indoor unit will ring, and communication can be established by pressing its answer button.



This image illustrates the capability of PANDAAR Wireless Intercom Doorbell S1 indoor units to communicate with each other, showing multiple units placed throughout a home environment.

## 4.4 Product Demonstration Video

Your browser does not support the video tag.

This video demonstrates the basic operation of the PANDAAR Wireless Intercom Doorbell S1. It shows a person pressing the call button on the outdoor unit, followed by the indoor unit ringing and the user answering the call, illustrating the two-way communication feature.

## 5. MAINTENANCE

## 5.1 Battery Management

The outdoor unit's 800mAh battery provides long-lasting power. Recharge it when the battery indicator shows low power. The indoor unit, when placed in its charging dock, will remain continuously powered.

## 5.2 Cleaning

The doorbell is constructed from high-quality, durable materials and is IP44 waterproof. To clean the units, wipe them with a soft, damp cloth. Avoid using harsh chemicals or abrasive cleaners, which could damage the surface or internal components.

## 6. TROUBLESHOOTING

- **No Ringing/Communication:**

- Ensure both units are sufficiently charged.
- Verify that the units are within the effective transmission range (up to 984ft in open areas). Obstacles like thick walls can reduce range.
- If units were recently unpaired or new units were added, follow the pairing instructions in Section 3.2.

- **Poor Sound Quality/Interference:**

- Move units away from other electronic devices that may cause interference.
- Ensure there are no major physical obstructions between the units.
- The system uses encrypted communication to minimize interference; if issues persist, try repositioning the units.

- **Outdoor Unit Not Responding:**

- Check the battery level of the outdoor unit.
- The outdoor unit enters sleeping mode if no action is detected within 25 seconds to save power. Press the button again to wake it.

If you continue to experience issues, please refer to the Customer Support section for assistance.

## 7. SPECIFICATIONS

Attribute	Detail
Manufacturer	PANDAAR
Part Number	S1
Item Model Number	S1
Item Weight	9.6 ounces
Package Dimensions	5.31 x 4.09 x 2.68 inches
Color	White
Material	Plastic
Power Source	Battery Powered
Batteries	1 Lithium Polymer battery required (included)

Item Package Quantity	1
Waterproof Rating	IP44
Operating Temperature	-20°C to 50°C (-4°F to 122°F)

## 8. CUSTOMER SUPPORT

---

If you encounter any issues after receiving your PANDAAR Wireless Intercom Doorbell S1, or have questions not covered in this manual, please contact our customer support team. We are committed to resolving any issues within 12 hours.

Please refer to your purchase documentation or the product packaging for specific contact information.