

[Manuals.plus](#) /

> [inruwo](#) /

> inruwo Dishwasher Drain Pump User Manual

inruwo WDT730PAHZ0 WDTA50SAHZ0

inruwo Dishwasher Drain Pump User Manual

Model: WDT730PAHZ0 WDTA50SAHZ0

1. INTRODUCTION

This manual provides essential information for the safe and effective installation, operation, and maintenance of your inruwo Dishwasher Drain Pump. This component is designed to efficiently remove water from your dishwasher during its cycle, ensuring proper cleaning and preventing water accumulation. Please read this manual thoroughly before proceeding with any installation or maintenance.

2. SAFETY INFORMATION

Your safety and the safety of others are very important. Please read all safety messages in this manual and on your appliance. Always follow basic safety precautions to reduce the risk of fire, electric shock, or injury to persons.

- **Electrical Hazard:** Always unplug the dishwasher from the power supply before installing, servicing, or cleaning any parts. Failure to do so can result in electric shock or death.
- **Personal Injury Hazard:** Wear work gloves to protect your hands from sharp edges or components during installation and handling.
- **Qualified Technician:** Installation and service should be performed by a qualified technician. If you are unsure about any step, consult a professional.
- **Original Parts:** Use only genuine replacement parts or approved equivalents to ensure proper function and safety.

3. PRODUCT OVERVIEW

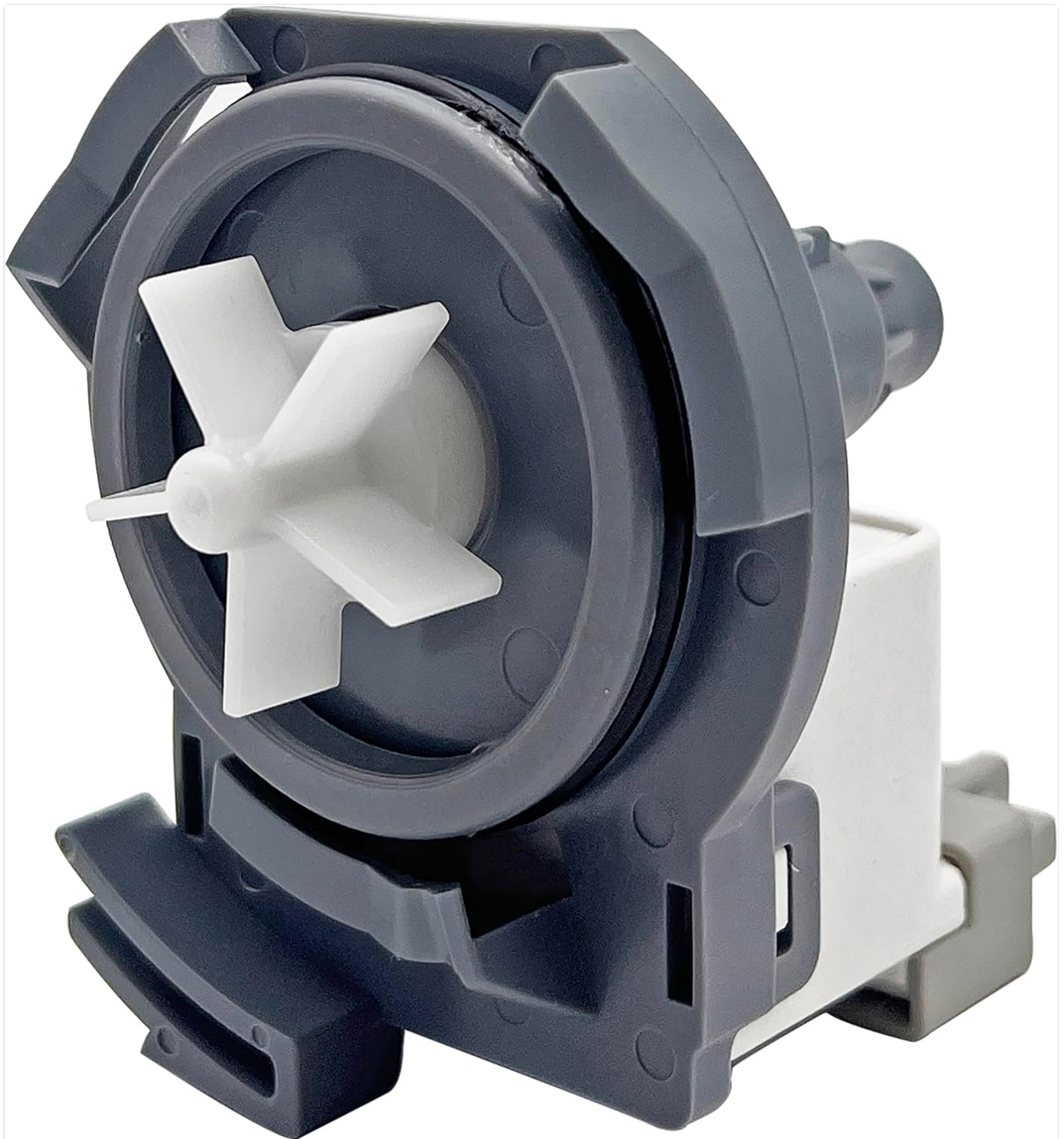


Figure 3.1: A detailed view of the Inruwo dishwasher drain pump, featuring its grey housing, white impeller, and electrical connection points. The pump is designed for efficient water drainage from dishwashers.

The Inruwo Dishwasher Drain Pump is a replacement component designed for various Whirlpool dishwasher models. It features a robust construction from Polypropylene or PVC, ensuring durability and resistance to corrosion. The pump operates on 120VAC, 15mA, 50/60Hz power, providing powerful drainage for dishwasher waste.

4. PACKAGE CONTENTS

The package includes the following item:

- 1 x Dishwasher Drain Pump Motor

5. SPECIFICATIONS

Attribute	Value
Brand	inruwo
Model Number	WDT730PAHZ0 WDTA50SAHZ0
Material	Polypropylene or PVC
Color	Grey
Power Source	Corded Electric
Voltage	120 Volts (AC)
Current	15mA
Frequency	50/60Hz
Item Weight	15 ounces
Package Dimensions	4.88 x 3.7 x 3.7 inches

6. COMPATIBILITY

This drain pump is compatible with a wide range of Whirlpool dishwasher models. Please verify your dishwasher's model number against the list below to ensure compatibility:

WDF110PABB4
WDF110PABB5
WDF110PABS4
WDF110PABS5
WDF110PABT4
WDF110PABT5
WDF110PABW4
WDF110PABW5
WDF120PAFB0
WDF120PAFS0
WDF120PAFT0

7. INSTALLATION (SETUP)

This section outlines the general steps for replacing a dishwasher drain pump. Specific procedures may vary slightly depending on your dishwasher model. Always refer to your dishwasher's service manual for detailed instructions.

- 1. Disconnect Power:** Locate your dishwasher's power cord and unplug it from the electrical outlet. If hardwired, turn off the circuit breaker supplying power to the dishwasher. *This is a critical safety step.*
- 2. Shut Off Water Supply:** Turn off the water supply valve to the dishwasher, typically located under the sink.
- 3. Access the Pump:** Depending on your dishwasher model, you may need to pull the dishwasher out from under the counter or access the pump from the front or bottom. This often involves removing the lower access panel.
- 4. Drain Residual Water:** Place towels or a shallow pan under the pump area to catch any residual water that may drain out when hoses are disconnected.
- 5. Disconnect Hoses and Wiring:** Carefully disconnect the drain hoses and electrical wiring connected to the old drain pump. Note their positions for reinstallation.

6. **Remove Old Pump:** Unmount the old drain pump from its housing. This usually involves releasing clips or unscrewing fasteners.
7. **Install New Pump:** Position the new inruwo drain pump into the housing and secure it with the clips or fasteners. Ensure it is seated correctly.
8. **Reconnect Hoses and Wiring:** Reattach the drain hoses and electrical wiring to the new pump. Double-check all connections for tightness and proper orientation.
9. **Secure Access Panels:** Reinstall any access panels or components that were removed.
10. **Restore Power and Water:** Turn on the water supply valve and plug the dishwasher back into the electrical outlet or restore power at the circuit breaker.
11. **Test Operation:** Run a short wash cycle to check for leaks and confirm that the new drain pump is functioning correctly. Observe the drainage process.

Remember to wear work gloves throughout the installation process to protect your hands.

8. OPERATING INSTRUCTIONS

The inruwo Dishwasher Drain Pump operates automatically as part of your dishwasher's wash cycle. Once installed, no manual intervention is required for its operation.

- During the wash and rinse cycles, the dishwasher's control board activates the drain pump to remove dirty water from the tub.
- Ensure that the dishwasher is loaded correctly and that no items are obstructing the drain area or spray arms.
- Regularly check for proper drainage after each cycle. If water remains in the bottom of the dishwasher, refer to the Troubleshooting section.

9. MAINTENANCE

Proper maintenance can extend the life of your dishwasher and its components, including the drain pump.

- **Clean Dishwasher Filter:** Regularly clean your dishwasher's filter to prevent food particles and debris from reaching the drain pump, which can cause clogs or damage.
- **Inspect Drain Hose:** Periodically inspect the drain hose for kinks, blockages, or damage. A restricted hose can impede drainage.
- **Avoid Overloading:** Do not overload the dishwasher, as this can prevent proper water circulation and drainage.
- **Use Appropriate Detergent:** Use only dishwasher-specific detergent in the recommended amounts to prevent excessive sudsing, which can affect pump performance.

10. TROUBLESHOOTING

If your dishwasher is not draining properly after installing the new pump, consider the following common issues:

Problem	Possible Cause	Solution
Dishwasher not draining	Clogged drain hose or air gap	Check and clear any obstructions in the drain hose or air gap. Ensure the drain hose is not kinked.
Water remains in tub	Dishwasher filter is clogged	Remove and clean the dishwasher's filter assembly.

Pump making unusual noises but not draining	Debris caught in pump impeller	Disconnect power first. Access the pump and carefully inspect the impeller for any foreign objects. Remove them if found.
No power to pump	Loose electrical connection or faulty control board	Disconnect power first. Check electrical connections to the pump. If connections are secure, the issue may be with the dishwasher's control board, requiring professional service.

If these steps do not resolve the issue, it is recommended to contact a qualified appliance technician.

11. WARRANTY AND SUPPORT

Specific warranty information for this product may be provided at the point of purchase or on the manufacturer's official website.

Please retain your proof of purchase for any warranty claims.

For technical support or inquiries regarding this inruwo drain pump, please refer to the contact information provided by your retailer or the manufacturer.



© 2025 inruwo. All rights reserved.

This manual is for informational purposes only. inruwo is not responsible for any damages or injuries resulting from improper installation or use of this product.