

[Manuals.plus](#) /

› [NBBUFF](#) /

› NBBUFF 200FT RGB LED Strip Lights User Manual (Model NB-rgb007-4)

NBBUFF NB-rgb007-4

NBBUFF 200FT RGB LED Strip Lights User Manual

Model: NB-rgb007-4

Brand: NBBUFF

INTRODUCTION

Thank you for choosing the NBBUFF 200FT RGB LED Strip Lights. This manual provides detailed instructions for the safe installation, operation, and maintenance of your LED strip lights. Please read this manual thoroughly before use and retain it for future reference. These LED strip lights are designed to provide customizable ambient lighting with various color options, music synchronization, and control via both a remote and a mobile application.

PACKAGE CONTENTS

Please verify that all items listed below are included in your package. If any items are missing or damaged, please contact customer support.

- LED Strip Lights (2 rolls)
- Controller (1 unit)
- Remote Control (1 unit)
- Power Adapter (1 unit)
- Instruction Manual (1 unit)

SAFETY INFORMATION

To ensure safe operation and prevent damage, please observe the following safety precautions:

- Ensure the power supply is disconnected before installation or maintenance.
- Do not expose the LED strips or power adapter to water or moisture. This product is for indoor use only.
- Avoid bending the LED strips sharply, as this can damage the circuit board.
- Do not connect the LED strips directly to mains voltage without the provided power adapter.
- Keep out of reach of children.

- Do not cover the LED strips with materials that could impede heat dissipation.
- Only use the provided power adapter and controller with these LED strip lights.

SETUP

Follow these steps for proper installation of your LED strip lights:

1. **Prepare the Surface:** Clean the desired installation surface thoroughly. Ensure it is dry, smooth, and free of dust or oil. A clean surface is crucial for optimal adhesive performance.
2. **Test the Lights:** Before peeling off the adhesive, connect the LED strips to the controller and power adapter. Plug in the power adapter to ensure the lights function correctly. This allows you to verify the product's working condition before permanent installation.
3. **Attach the LED Strips:** Carefully peel off the protective backing from the adhesive tape on the back of the LED strip. Press the strip firmly onto the prepared surface. For enhanced adhesion, especially around corners or rough surfaces, use additional tape if necessary.

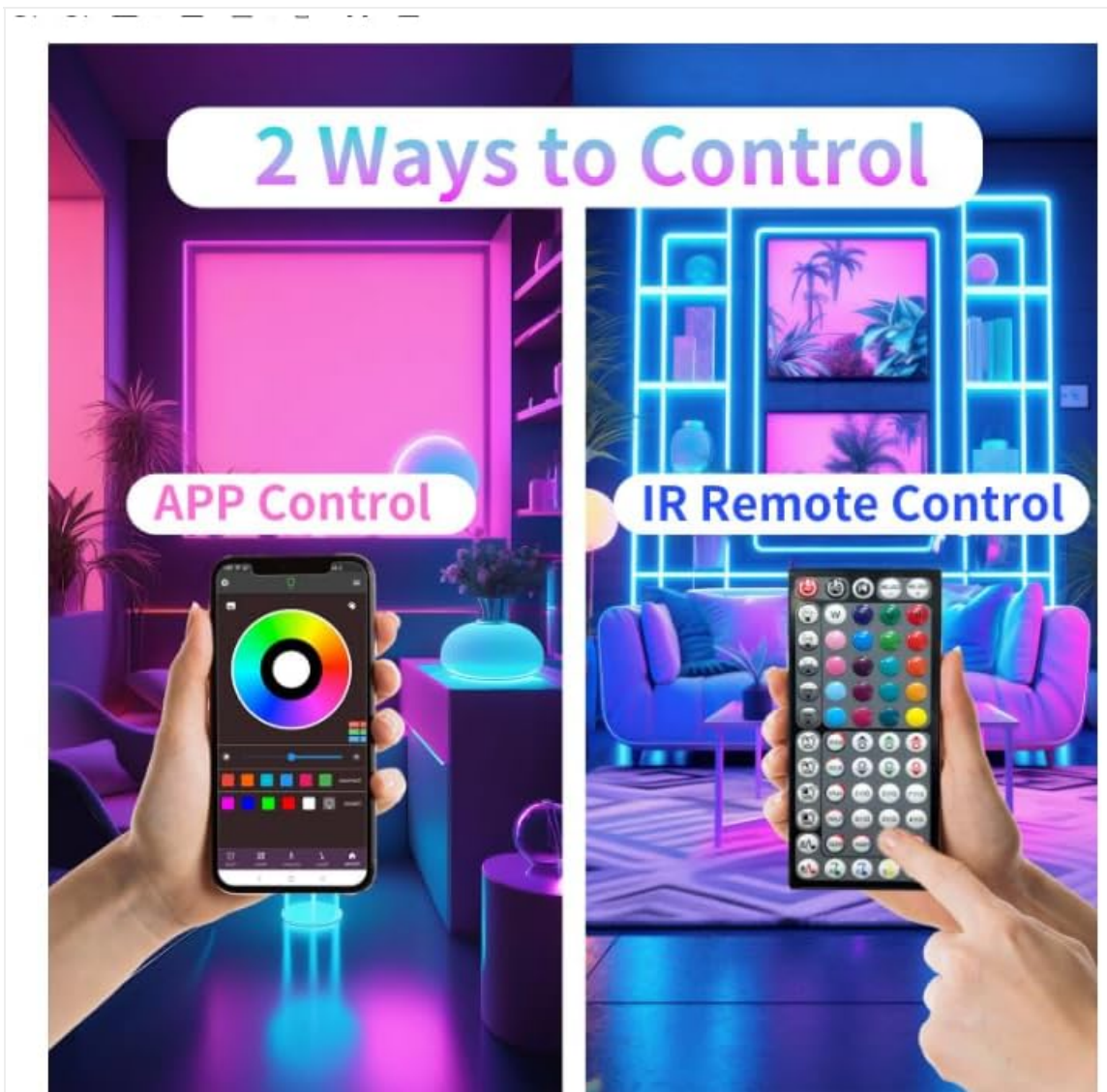


Image: Illustration of using double-sided tape for secure installation, particularly when changing direction or encountering obstacles.

4. Connect Components:

- Connect the LED strip connectors to the controller's output ports. Ensure the arrows on the connectors align.
- Connect the power adapter to the controller's input port.
- Plug the power adapter into a standard electrical outlet.

Timer Setting

The Brilliant Led Lights Accompany Your Baby to Sleep

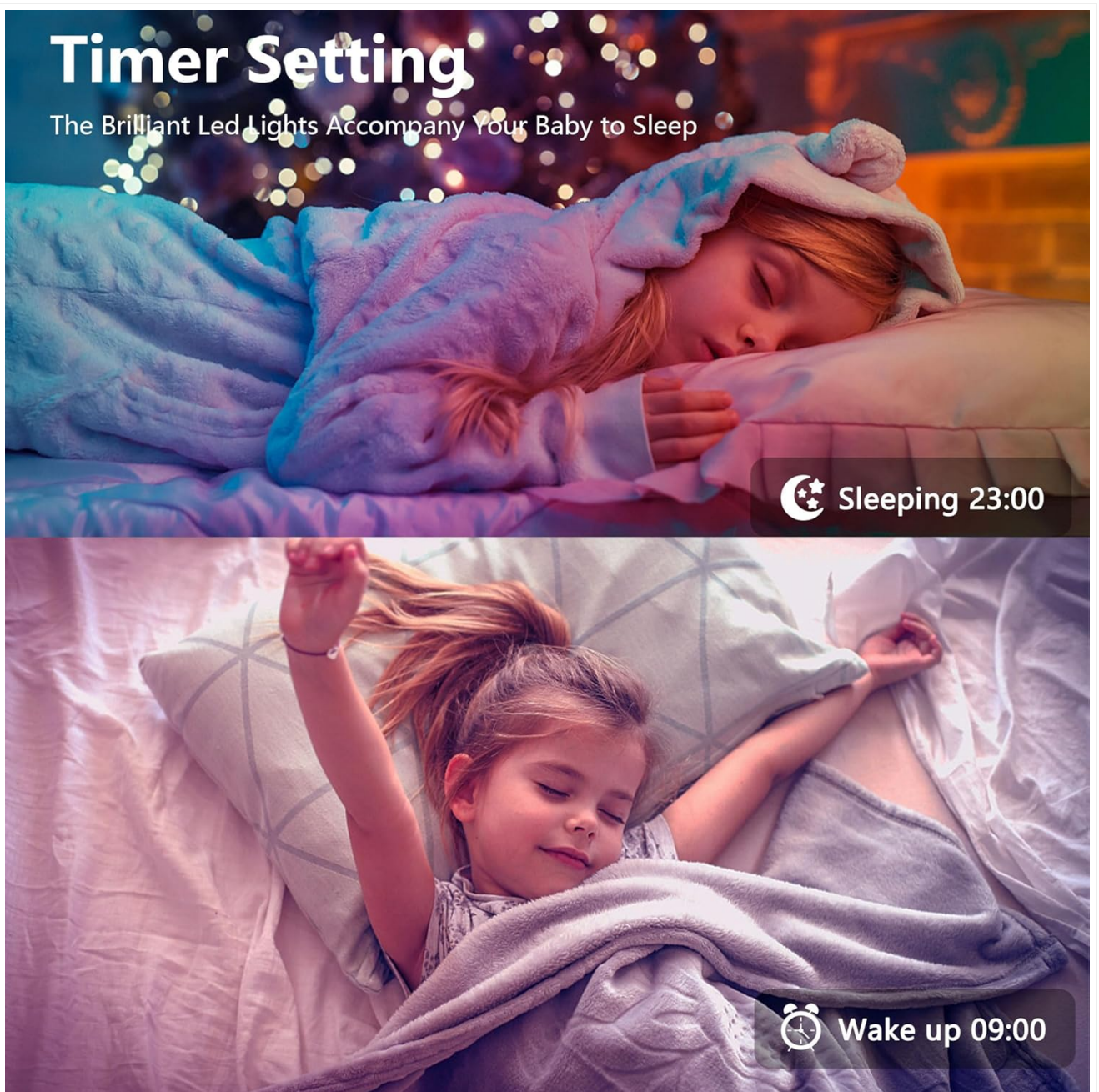


Image: Visual guide for connecting the LED strip lights to the IR controller and power adapter.

- 5. Prepare Remote Control:** Remove the transparent insulation sheet from the battery compartment of the remote control before first use.
- 6. App Download (Optional):** Scan the QR code on the controller or in the manual to download the recommended control application for your smartphone. Follow the in-app instructions to pair your device with the LED lights via Bluetooth.
- 7. Cutting the Strip (Optional):** The LED strip can be cut along the designated cutting marks (usually indicated by a copper pad and a scissor icon). Only cut at these marks to avoid damaging the circuit. Ensure the power is disconnected before cutting.

OPERATING INSTRUCTIONS

Your NBBUFF LED Strip Lights can be controlled using the included remote control or a smartphone application.

Built-in Double-Sided Tape

1. When the light strip changes direction

2. When changing wall or obstacle

Please use double-sided tape to prevent the strip from falling off

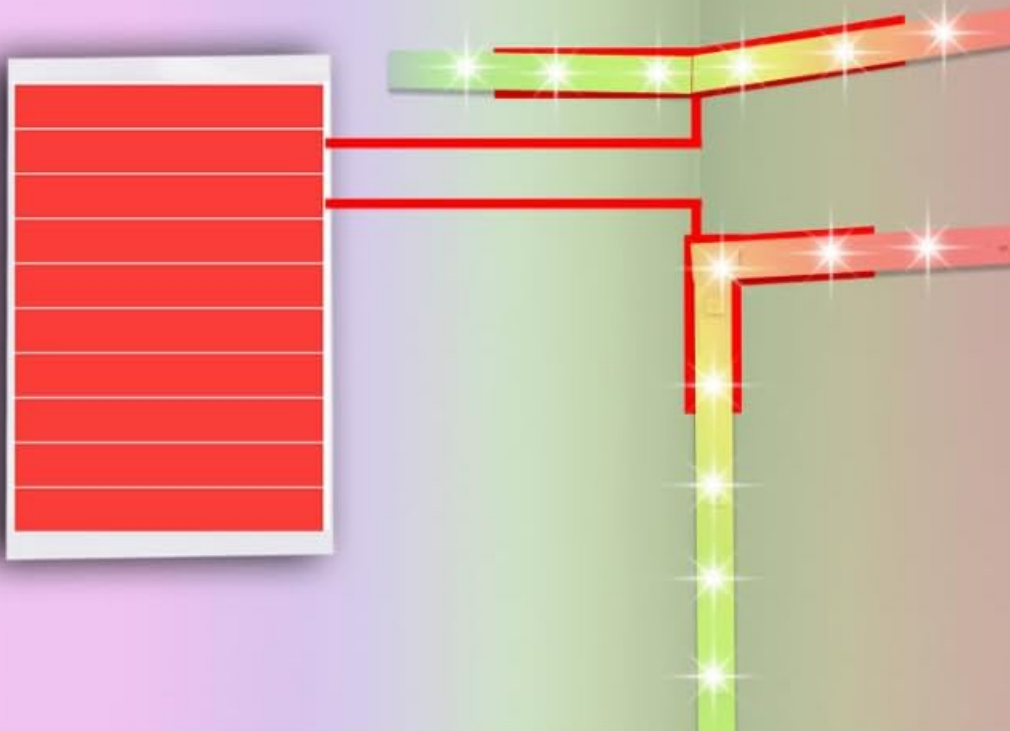


Image: Two methods of control: smartphone app and infrared remote control.

Using the Remote Control

Point the remote control directly at the IR receiver on the controller for optimal response.

- **Power On/Off:** Press the ON/OFF button.
- **Color Selection:** Choose from various static colors using the color buttons.
- **Brightness Adjustment:** Use the **Brightness Up/Down** buttons to adjust light intensity (20%, 40%, 60%, 80%, 100%).
- **Mode Selection:** Cycle through dynamic modes like Flash, Jump, Fade, etc., using the dedicated mode buttons.
- **Music Sync:** Activate music synchronization mode to make the lights react to sound.

Using the Smartphone Application

After downloading and pairing the app, you can access advanced control features:

- **Custom Color Palette:** Select any color from a full spectrum.
- **Dynamic Modes:** Access a wider range of pre-programmed lighting effects.
- **Brightness Control:** Adjust brightness from 1% to 100% with fine-tuning.
- **Music Synchronization:** Utilize the device's microphone for music sync, offering more responsive lighting effects.
- **Timer Function:** Set schedules for the lights to automatically turn on or off at specific times.

Easy to Use

How to connect



Image: Example of timer setting for automatic on/off, useful for sleep and wake-up routines.

- **DIY Modes:** Create and save your own custom lighting effects.

MAINTENANCE

Proper maintenance ensures the longevity and performance of your LED strip lights.

- **Cleaning:** Gently wipe the LED strips with a dry, soft cloth to remove dust. Do not use liquid cleaners or abrasive materials.
- **Storage:** If storing the lights for an extended period, ensure they are clean, dry, and coiled loosely to prevent damage. Store in a cool, dry place.
- **Adhesive Check:** Periodically check the adhesive backing to ensure the strips remain securely attached. Reapply or reinforce with additional tape if necessary.

TROUBLESHOOTING

If you encounter issues with your LED strip lights, refer to the following common problems and solutions:

Problem	Possible Cause	Solution
Lights do not turn on.	Power adapter not connected. Controller not connected correctly. No power from outlet. Remote control battery depleted or insulation not removed.	Ensure all connections are secure. Check if the power outlet is functional. Remove the insulation sheet from the remote battery. Replace battery if needed.
Remote control not working.	Remote battery issue. Obstruction between remote and IR receiver. Remote out of range.	Check/replace remote battery. Ensure direct line of sight to the IR receiver. Move closer to the controller.
App cannot connect to lights.	Bluetooth not enabled on phone. Lights not in pairing mode. Interference.	Enable Bluetooth on your smartphone. Restart the app and the LED lights. Ensure you are within Bluetooth range.
Lights are dim or flickering.	Insufficient power. Damaged strip section.	Ensure power adapter is correctly connected and providing sufficient power. Inspect the strip for physical damage or loose connections.

SPECIFICATIONS

Model Number	NB-rgb007-4
Brand	NBBUFF
Item Length	200 Feet
Light Color	RGB (Color Changing)
Light Source Type	LED
Power Source	AC (with included Power Adapter)
Voltage	24 Volts
Controller Type	App Control, Remote Control
Indoor/Outdoor Usage	Indoor
Special Features	Corded, Color Changing, Dimmable, Timer, Automatic On-Off, Music Sync
Material	Copper, Plastic
Number of Light Sources	720
Item Weight	15.2 ounces

WARRANTY INFORMATION

NBBUFF products are manufactured to high-quality standards. This product is covered by a limited warranty against

defects in materials and workmanship from the date of purchase. Please retain your proof of purchase for warranty claims. The warranty does not cover damage caused by improper installation, misuse, unauthorized modifications, or natural disasters. For specific warranty terms and conditions, please refer to the product packaging or contact customer support.

CUSTOMER SUPPORT

If you have any questions, require assistance, or encounter issues not covered in this manual, please contact our customer support team.

- **Email:** [Insert Customer Support Email Here, if available]
- **Website:** [Insert Company Website Here, if available]

Please provide your product model number (NB-rgb007-4) and purchase details when contacting support for faster service.