

Manuals+

[Q & A](#) | [Deep Search](#) | [Upload](#)

Manuals.plus /

› [Hydra Fitness Exchange](#) /

› Hydra Fitness Exchange LCB Cover 0000092839 Instruction Manual for Vision Fitness Ellipticals

Hydra Fitness Exchange EP632

Hydra Fitness Exchange LCB Cover 0000092839 Instruction Manual

For Vision Fitness Elliptical Models EP632, EP632B, EP726, EP632C

1. INTRODUCTION

This manual provides essential information for the Hydra Fitness Exchange LCB Cover, part number 0000092839. This component is designed as a replacement part for specific Vision Fitness elliptical models. Please read these instructions carefully before attempting installation or maintenance to ensure proper fit and function.

2. PRODUCT OVERVIEW

The LCB Cover (Part # 0000092839) is a black plastic component designed to protect internal mechanisms of compatible elliptical trainers. Its dimensions are approximately 6 inches (L) x 8 inches (W) x 1 inch (H).



Figure 1: Front view of the LCB Cover 0000092839. This black plastic component features a slotted design for ventilation.



Figure 2: Angled view of the LCB Cover 0000092839, showing its L-shaped structure and ventilation slots.

3. COMPATIBILITY

This LCB Cover (Part # 0000092839) is compatible with the following Vision Fitness elliptical models:

- Vision Fitness S70-03 | EP632 | 2019
- Vision Fitness S70-04 | EP632B | 2020
- Vision Fitness S700E Ascent Trainer | EP726 | EP723
- Vision Fitness S70-05 | EP632C | 2023

To ensure correct part selection, locate your elliptical's model name and model number (or serial number for other manufacturers). This information is typically found on a label affixed to the equipment. For serial numbers, the first 2-5 characters are often sufficient for identification.

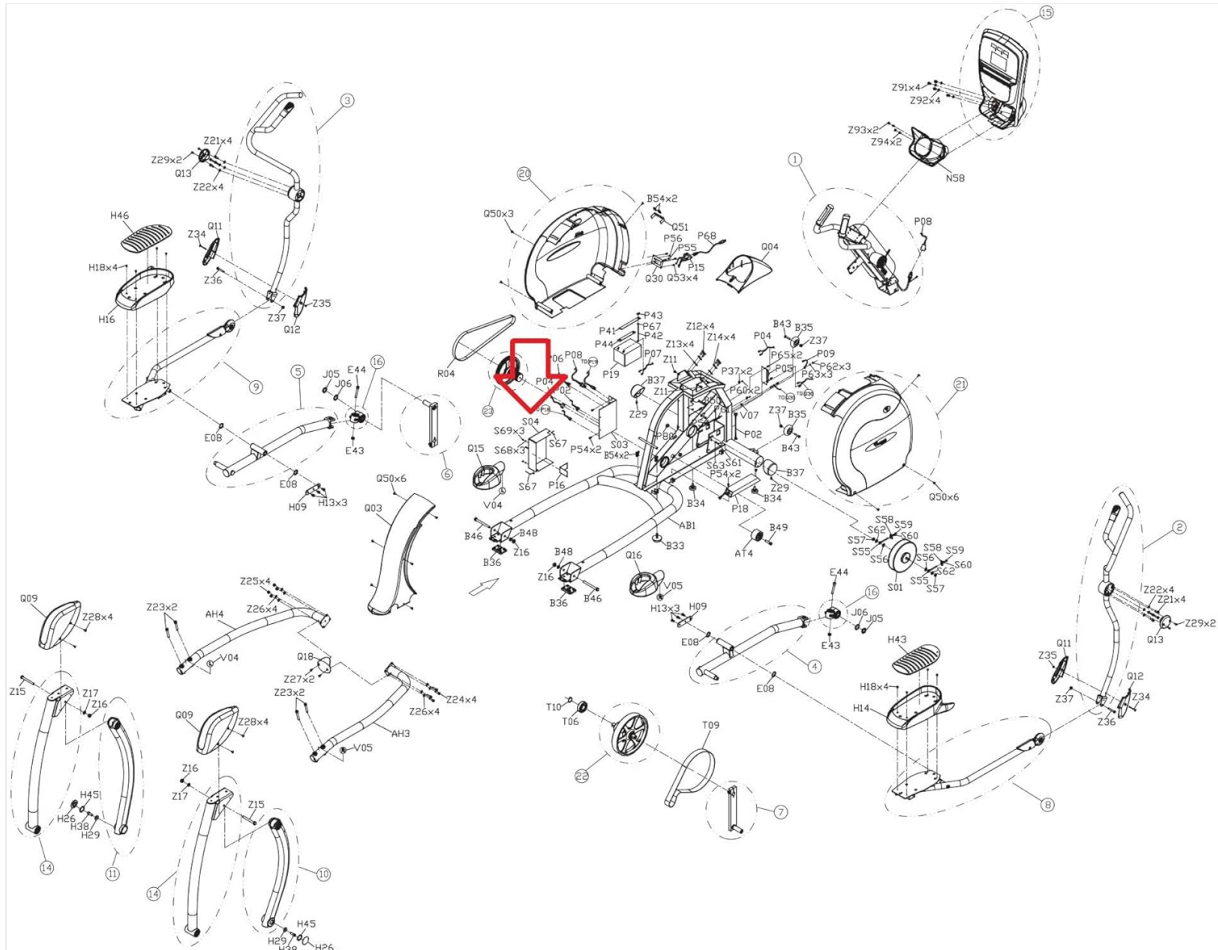


Figure 3: Exploded diagram illustrating various components of a Vision Fitness Elliptical. The LCB Cover (part 0000092839) is indicated by the red rectangle, showing its general location within the machine's assembly.

4. INSTALLATION

Installation of the LCB Cover typically involves replacing an existing or damaged cover. Follow these general guidelines:

1. **Safety First:** Before beginning any work, ensure the elliptical is powered off and unplugged from the electrical outlet.
2. **Access:** Depending on your specific elliptical model, you may need to remove other panels or components to gain access to the LCB area. Refer to your elliptical's original service manual for detailed disassembly instructions.
3. **Removal:** Carefully unfasten any screws, clips, or other retaining mechanisms holding the old LCB cover in place. Note the orientation of the old cover for correct installation of the new one.
4. **Placement:** Position the new LCB Cover (Part # 0000092839) in the correct orientation. Refer to Figure 3 for the general location.
5. **Securing:** Re-fasten the cover using the original screws, clips, or retaining mechanisms. Do not

overtighten.

6. **Reassembly:** Reassemble any other components or panels that were removed to access the LCB area.
7. **Functionality Check:** Once fully reassembled, plug in and power on the elliptical to ensure all functions operate correctly and the new cover is securely in place.

If you are uncertain about any step, it is recommended to consult a qualified fitness equipment technician.

5. OPERATION

The LCB Cover is a protective component and does not have operational controls. Its function is to shield the internal Low Current Board (LCB) and associated wiring from dust, debris, and accidental contact, while allowing for necessary ventilation through its slotted design.

6. MAINTENANCE

To maintain the LCB Cover and ensure proper ventilation, periodically wipe the surface with a soft, damp cloth to remove dust and grime. Avoid using abrasive cleaners or solvents, as these may damage the plastic material.

7. TROUBLESHOOTING

- **Cover Does Not Fit:**
 - Verify that the part number 0000092839 matches the required part for your specific elliptical model.
 - Double-check your elliptical's model number against the compatibility list in Section 3.
 - Ensure the cover is oriented correctly during installation.
- **Cover is Damaged During Installation:**
 - Ensure proper tools are used and excessive force is avoided.
 - If the cover is damaged, a replacement may be necessary.

8. SPECIFICATIONS

Part Number:	0000092839
Brand:	Hydra Fitness Exchange
Material:	Plastic
Color:	Black
Product Dimensions:	6 inches (L) x 8 inches (W) x 1 inch (H)
Item Weight:	1 pound
Compatible Models:	Vision Fitness EP632, EP632B, EP726, EP632C
UPC:	639937351659

9. SUPPORT

If you are uncomfortable with diagnosing issues or installing replacement parts for your fitness machine, it is recommended to seek assistance from a qualified fitness technician. Hydra Fitness Exchange may be able to recommend a technician in your area based on your zip code. For further assistance or inquiries, please refer to the seller's contact information on the purchase platform.