

manuals.plus /

- › [Ulefone](#) /
- › [Ulefone Armor 25T Rugged Smartphone User Manual](#)

## Ulefone Ulefone Armor 25T Rugged Smartphone

# Ulefone Armor 25T Rugged Smartphone User Manual

Model: Ulefone Armor 25T Rugged Smartphone

## INTRODUCTION

---

The Ulefone Armor 25T is a robust and versatile rugged smartphone designed for demanding environments and users who require advanced features like thermal imaging and night vision. This manual provides essential information for setting up, operating, maintaining, and troubleshooting your device to ensure optimal performance and longevity.



Figure 1: Ulefone Armor 25T Rugged Smartphone, showcasing its front display with a thermal imaging deer wallpaper and its rugged back with the camera module.

## PACKAGE CONTENTS

Upon opening the package, verify that all items are present:

- Ulefone Armor 25T Rugged Smartphone

- Power Adapter
- USB Cable
- SIM Needle
- Protective Film (pre-applied or included)
- User Manual (this document)

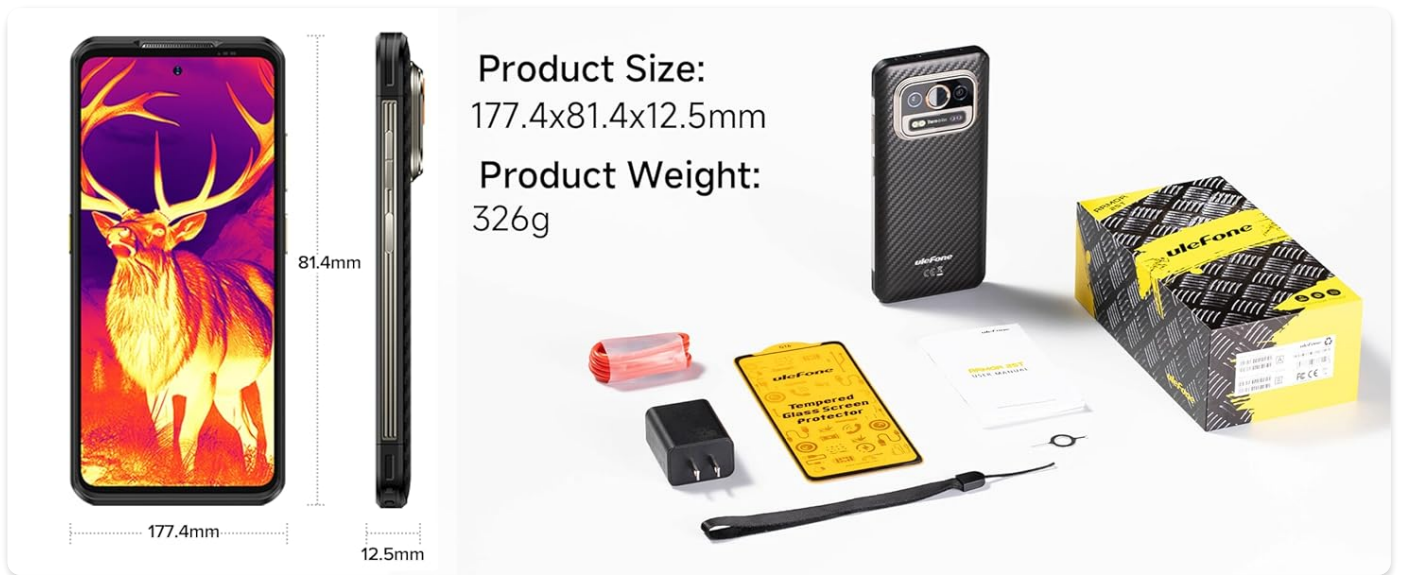


Figure 2: Product dimensions and typical package contents, including the smartphone, charger, cable, and documentation.

## SETUP

### 1. Initial Charging

Before first use, fully charge the device. Connect the provided USB cable to the phone's charging port and the power adapter, then plug the adapter into a wall outlet. The phone supports 33W flash charging and 30W wireless charging.

### 2. SIM Card and MicroSD Card Installation

The Ulefone Armor 25T supports dual Nano SIM cards and a microSD card for expandable storage up to 2TB. Use the provided SIM needle to open the SIM tray. Insert your SIM cards and/or microSD card into the designated slots, ensuring correct orientation.

### 3. Power On and Initial Setup

Press and hold the Power button until the Ulefone logo appears. Follow the on-screen prompts to complete the initial setup, including language selection, Wi-Fi connection, Google account setup, and security settings.

## OPERATING YOUR DEVICE

### Display and User Interface

The device features a 6.78-inch FHD+ display with a 120Hz refresh rate, providing a smooth visual experience. Navigate the Android 14 operating system using touch gestures.



# 6.78" FHD+ 120Hz Display



**2K**  
Display



**1080x2460**  
FHD+



**20:9**  
Aspect Ratio



**396 Nits**  
Helligkeit

Figure 3: The 6.78-inch FHD+ 120Hz display, optimized for fluid visuals and responsiveness.



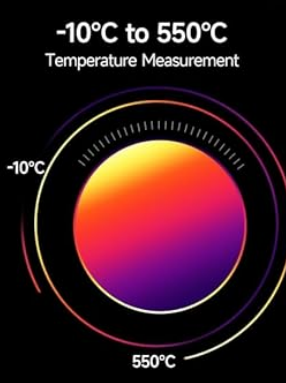
Figure 4: Detailed view of the display's specifications, including 2K resolution support and 396 Nits brightness.

## Camera System

The Armor 25T is equipped with a versatile camera system:

- **Thermal Imaging Camera:** Features a 160x120 resolution and 25Hz refresh rate, ideal for detecting heat signatures in various applications.
- **64MP Night Vision Camera:** Utilizes infrared LEDs to capture clear images in extremely low-light conditions.
- **50MP Ultra Camera:** High-resolution main camera for detailed photos and 2K video recording.
- **32MP Front Camera:** For high-quality selfies and video calls.





0m    250m    500m    750m    1000m



# 64MP Night Vision Camera

NightElf Ultra 3.0 Algorithm





Ultraviolet      Infrared

Ultraviolet      Visible Light      Infrared

400nm   500nm   600nm   700nm   850nm





# 50MP Wide-angle Camera

1/1.31" Ultra-Large Sensor



## 50MP Sensor Size Contrast

 <p>1/1.31"</p>	 <p>1/4"</p>	 <p>1/1.49"</p>	 <p>1/1.56"</p>	 <p>1/1.57"</p>
ISOCELL GN1 50MP	LYT-808 50MP	IMX890 50MP	IMX766 50MP	ISOCELL GN5 50MP



Figure 6: Details of the 64MP Night Vision Camera with NightElf Ultra 3.0 Algorithm and infrared spectrum.





Figure 7: Examples of images captured using the various camera modes, including thermal and night vision.

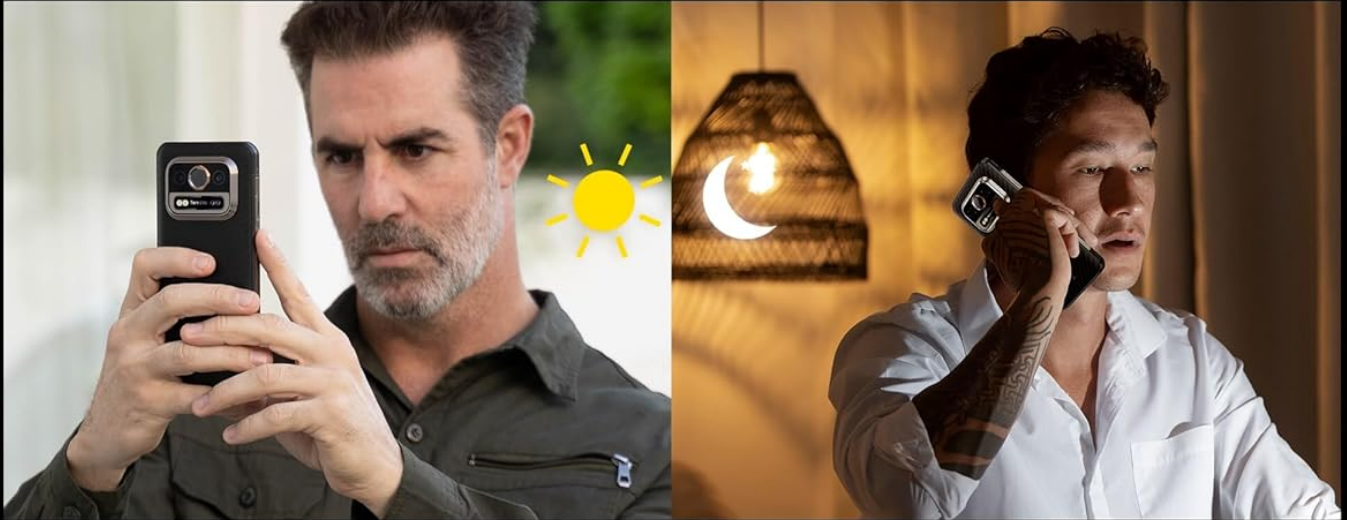
## Battery Management

The 6500mAh battery provides extended usage. Charge the device using the 33W flash charger for rapid charging or a 30W wireless charger. The phone also supports reverse wireless charging to power other compatible devices.



# 6500mAh Powerful Battery

## No Power Hungry



**478 Hours**  
Standby Time



**48 Hours**  
Call Time



**16 Hours**  
Video Playback

6500mAh Large Battery



30W Wireless Charging



Supports Reverse Charging



# 33W



**1.5 Hrs**

Figure 8: Overview of the 6500mAh battery's performance, including standby time, call time, video playback, and charging methods.

## Connectivity and Features

The Armor 25T offers a range of connectivity options and smart features:

- **NFC:** For contactless payments and data transfer.
- **IR Blaster:** Control compatible home appliances like TVs and air conditioners.
- **GPS:** Supports GPS, GLONASS, Beidou, and Galileo for accurate navigation.



- **Custom Key:** A programmable button for quick access to specific functions (e.g., PTT, flashlight, SOS).
- **Outdoor Toolbox:** A suite of utility apps for outdoor activities (e.g., compass, sound meter, height measure).
- **Face Unlock & Fingerprint ID:** Secure and convenient biometric authentication.
- **Headset-free FM Radio:** Enjoy FM radio without needing headphones as an antenna.

# More Strengths to Boost Scenarios Immersion

**IR Blaster**

**Classic Kevlar Texture**

**Thin and Solid**

**Slim**

**3-Card Slot**

**NFC + Google Pay**

**Face Unlock + Fingerprint ID**

**Massive Battery 6500mAh**

**Android 14**

**Outdoor Toolbox**

**GPS** **Galileo**  
**Glonass** **BeiDou**

**Customized Key**

Single Click Double Click Long Press

SOS

Figure 9: Visual representation of various features including IR Blaster, NFC, custom key, and biometric security.

## Android 14 Operating System



The device runs on Android 14, offering enhanced security, privacy controls, and customization options. Explore new features like improved notification management, personalized themes, and advanced privacy dashboards.



Figure 10: Screenshots illustrating key features and interface elements of the Android 14 operating system.

MAINTENANCE

Durability and Protection

The Ulefone Armor 25T is built to withstand harsh conditions, certified with IP68/IP69K for water and dust resistance, and MIL-STD-810H for drop resistance. This means it can endure submersion in water up to 2 meters for 30 minutes and drops from 1 meter onto concrete.



Figure 11: Visual demonstration of the phone's water, dust, and drop resistance capabilities.

Cleaning and Care

To clean your device, use a soft, damp cloth. Avoid using harsh chemicals or abrasive materials. Ensure all port covers are securely closed to maintain water and dust resistance, especially after charging or using the audio jack.

Software Updates

Regularly check for and install software updates to ensure your device has the latest features, security patches, and performance improvements. You can usually find this option in the phone's Settings menu under 'System' or 'About phone'.

TROUBLESHOOTING

This section addresses common issues you might encounter with your Ulefone Armor 25T.

Problem	Possible Solution
Device does not power on	Ensure the battery is charged. Connect to charger for at least 10 minutes before attempting to power on. If unresponsive, perform a forced restart by holding the Power button for 10-15 seconds.
Poor battery life	Reduce screen brightness, close unused apps, disable Wi-Fi/Bluetooth/GPS when not in use. Check battery usage in Settings to identify power-hungry apps.
Network connectivity issues	Ensure SIM card is correctly inserted. Check network settings (APN). Restart the device. Verify compatibility with your carrier (Note: Not compatible with AT&T, Cricket, Verizon, Xfinity, Sprint, Boost Mobile).
Thermal camera not working	Ensure the thermal camera app is updated. Check for any physical obstructions on the camera lens. Restart the device.
Night vision camera unclear	Ensure the infrared LEDs are not obstructed. Clean the camera lens. Ensure you are in a sufficiently dark environment for night vision to be effective.



If you encounter issues not listed here or if the suggested solutions do not resolve the problem, please contact Ulefone customer support for assistance.

## SPECIFICATIONS

---

Key technical specifications for the Ulefone Armor 25T:

- **Model Name:** Ulefone Armor 25T Rugged Smartphone
- **Operating System:** Android 14
- **CPU:** MediaTek Helio G99 Octa Core, 2.2 GHz
- **RAM:** 12 GB (6GB physical + 6GB virtual)
- **Internal Storage:** 256 GB (expandable up to 2TB via microSD)
- **Display:** 6.78 Inches FHD+, 120 Hz Refresh Rate
- **Thermal Camera Resolution:** 160 x 120
- **Night Vision Camera:** 64 MP
- **Main Camera:** 50 MP
- **Front Camera:** 32 MP
- **Battery Capacity:** 6500 mAh
- **Charging:** 33W Flash Charging, 30W Wireless Charging, Reverse Wireless Charging
- **Dimensions:** 6.98 x 3.2 x 0.49 inches (177.4 x 81.4 x 12.5 mm)
- **Weight:** 11.5 ounces (326 Grams)
- **Durability:** IP68/IP69K Water & Dust Proof, MIL-STD-810H Drop Resistance
- **Connectivity:** 4G LTE, Wi-Fi, Bluetooth 5.2, NFC, GPS (GLONASS, Beidou, Galileo)
- **Audio Jack:** 3.5 mm



Figure 12: Illustration of the MediaTek Helio G99 SoC and memory configuration (12GB RAM, 256GB ROM).

## WARRANTY AND SUPPORT

Ulefone provides comprehensive support for your Armor 25T:

- **Warranty:** 1-Year Non-artificial Damage Warranty.
- **Returns:** 30 Days Return without reason (check retailer policy).



- **Technical Support:** 24 Hours Technical Support available.

For service or inquiries, please refer to the contact information provided with your purchase or visit the official Ulefone website.

## Optional Accessories

Enhance your experience with separately available accessories:

- Armor Case
- Sports Armband
- Car Mount
- Bike Mount



Figure 13: The exclusive Armor Case designed for the Ulefone Armor 25T, providing enhanced protection.



Figure 14: Various Armor Mount accessories, including car and bike mounts, for versatile usage.

	<p><a href="#">Ulefone Armor 25T Series User Manual: Comprehensive Guide to Setup, Features, and Safety</a></p> <p>Detailed user manual for the Ulefone Armor 25T Series smartphone. Covers device setup, card installation, network bands, basic operations, crucial safety information, and disclaimers.</p>
	<p><a href="#">Ulefone Armor Mini 20 Pro Series User Manual</a></p> <p>Comprehensive user manual for the Ulefone Armor Mini 20 Pro Series, covering setup, features, safety information, and troubleshooting.</p>
	<p><a href="#">UleFone Armor Mini 20 Pro Series User Manual</a></p> <p>Comprehensive user manual for the UleFone Armor Mini 20 Pro Series, covering setup, features, safety information, and warranty conditions. Includes details on card management, messaging, photography, and device specifications.</p>
	<p><a href="#">Ulefone Power Armor 19 User Manual - Rugged Smartphone Guide</a></p> <p>Official user manual for the Ulefone Power Armor 19 rugged smartphone. Learn about installation, features, network bands, safety precautions, FCC/CE compliance, and more.</p>
	<p><a href="#">DOOGEE eSIM Functions Quick Guide</a></p> <p>Learn how to download, switch, delete, and top up eSIMs on your DOOGEE smartphone with this comprehensive quick guide. Covers step-by-step instructions and important cautions.</p>
	<p><a href="#">Ulefone Armor X8i Rugged Smartphone - Specifications and Features</a></p> <p>Detailed specifications and features of the Ulefone Armor X8i rugged smartphone, including its MediaTek processor, 3GB RAM, 32GB storage, 5.7-inch HD+ screen, 5080mAh battery, and IP68/IP69K rating.</p>