

Yasola B0D9D6GDXK

Yasola RC Car with Camera User Manual

Model: B0D9D6GDXK

Brand: Yasola

1. INTRODUCTION AND OVERVIEW

Thank you for choosing the Yasola RC Car with Camera. This remote control stunt vehicle is designed for an exciting and interactive play experience, featuring 360° rotation, double-sided driving, a high-definition camera for real-time transmission, and dynamic sound and light effects.

This manual provides essential information for setting up, operating, maintaining, and troubleshooting your RC car to ensure optimal performance and enjoyment.



Figure 1: Yasola RC Car with Camera, Remote Control, and Smartphone App Interface.

2. WHAT'S IN THE BOX

Please check the contents of your package to ensure all items are present:

- Yasola RC Car with Camera
- Remote Control
- Rechargeable Battery (pre-installed or separate)
- Charger
- Product Manual (this document)

3. SETUP GUIDE

3.1 Battery Installation and Charging

The RC car requires 1 Lithium Metal battery, which is included. Ensure the battery is fully charged before first use. Connect the battery to the charger and plug the charger into a power outlet. The charging indicator will show the charging status. Once fully charged, disconnect the battery and install it into the designated

compartment on the RC car.

3.2 App Download and Camera Connection

To utilize the camera features and real-time video transmission, you need to download the dedicated application to your smartphone. Scan the QR code provided in your physical manual book or search for the app name (if specified in the manual) in your device's app store.

1. Scan the QR code from your manual book to download the APP.
2. Turn on the RC car.
3. Choose the THIRD model on the APP interface.
4. Connect the car from your Wi-Fi list (no password needed).
5. Press the Start button on the app to run the car.

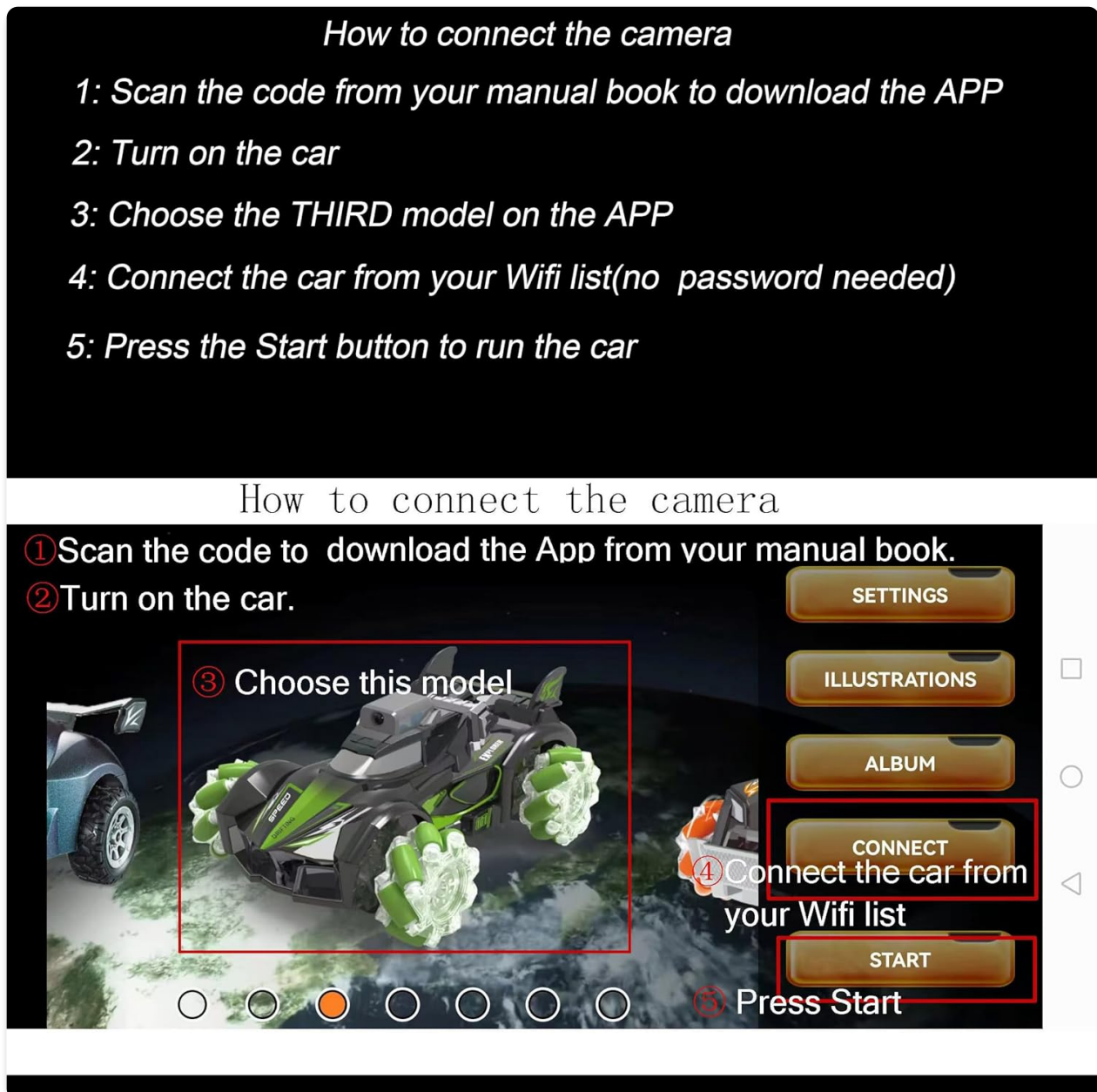


Figure 2: Steps for connecting the RC car camera to the smartphone application.

3.3 Water Injection for Spray Function

To enable the tail spray function, add a small amount of clean water to the designated water tank outlet on the car. Use the provided dropper or a small bottle to avoid overfilling.



Figure 3: Water injection port for the spray feature.

4. OPERATING INSTRUCTIONS

4.1 Basic Driving and Stunts

Use the remote control to navigate the RC car. It supports forward, backward, left, and right movements. The unique wheel design allows for 360° rotation and double-sided driving, enabling the car to easily overcome obstacles and perform various stunts.



Figure 4: The RC car's 360° rotation capability.

4.2 Camera Features and FPV Live Transmission

The integrated 720P high-definition camera allows you to capture photos and record videos directly from the car's perspective. Once connected to the app (as described in Section 3.2), you can view a real-time FPV (First Person View) feed on your smartphone, enhancing your driving experience.

720P *Wifi Camera*

30° Adjustable Camera Angle



Mini Camera
& Wide Angle

Figure 5: 720P WiFi Camera with 30° Adjustable Angle.



Figure 6: FPV Live Video Transmission to a smartphone.

4.3 One-Button Spray Function

After adding water to the tank, you can activate the tail spray effect using the remote control. Long press the large red button on the left front of the remote control to turn on the spray. Long press it again to turn off the spray. This feature is accompanied by a simulated roaring sound for an immersive experience.



Figure 7: RC Car activating its one-button spray function.

4.4 Cool Lighting and Dynamic Sound Effects

The RC car is equipped with flashing lights on its body and dynamic sound effects that enhance the driving pleasure. These features are automatically active during operation.



Figure 8: RC Car with cool lighting and dynamic sound effects.

4.5 2.4G Anti-Interference Signal

The 2.4G signal technology ensures anti-interference, allowing multiple Yasola RC cars to be operated simultaneously without signal conflicts. This enables exciting multi-player racing and stunt sessions.



Figure 9: Multiple RC cars operating simultaneously with 2.4G anti-interference.

4.6 Official Product Video

Your browser does not support the video tag.

Video 1: Official product video demonstrating the Yasola RC Car's features, including real-time camera transmission, spray function, and various stunts.

5. MAINTENANCE

Proper maintenance will extend the life of your Yasola RC Car:

- **Cleaning:** Regularly wipe the car with a soft, dry cloth to remove dust and debris. Avoid using water or harsh chemicals directly on electronic components.
- **Battery Care:** Always fully charge the battery before use and store it in a cool, dry place when not in use. Do not overcharge or completely drain the battery.
- **Water Tank:** After using the spray function, empty any remaining water from the tank to prevent residue buildup.
- **Storage:** When storing the car for extended periods, remove the battery from both the car and the remote control.

6. TROUBLESHOOTING

If you encounter issues with your Yasola RC Car, please refer to the following common solutions:

Problem	Possible Cause	Solution
Car does not respond to remote control.	Low battery in car or remote; not properly paired.	Ensure both car and remote batteries are charged. Re-pair the remote and car according to setup instructions.
Camera feed is not visible on the app.	Wi-Fi not connected; incorrect app model selected.	Verify Wi-Fi connection to the car's network. Ensure the correct car model is selected in the app. Restart both the car and the app.
Spray function not working.	Water tank empty; button not pressed correctly.	Refill the water tank. Ensure the spray button on the remote is pressed and held down.
Car drifts or does not drive straight.	Wheel alignment issue; driving surface.	Ensure the car is used on a flat, smooth surface. Check for any obstructions in the wheels. If persistent, contact customer support.

If the problem persists after trying these solutions, please contact Yasola customer support for further assistance.

7. SPECIFICATIONS

- **Product Dimensions:** 8.64 x 4.69 x 3.31 inches
- **Item Weight:** 1.61 pounds
- **ASIN:** B0D9D6GDXK
- **Manufacturer Recommended Age:** 8 years and up
- **Batteries:** 1 Lithium Metal battery (included)
- **Camera Resolution:** 720P HD
- **Control Frequency:** 2.4GHz
- **Manufacturer:** NIGHT LIONS TECH

8. SAFETY INFORMATION

For external use only.

Always supervise children during play. Do not operate the RC car near water, heat sources, or in hazardous environments. Avoid direct contact with moving parts. Do not modify the product in any way, as this may void the warranty and pose safety risks.

9. WARRANTY AND SUPPORT

For any warranty claims, technical support, or inquiries regarding your Yasola RC Car, please contact the seller, X-TOYS, directly through the platform where you purchased the product. Please have your purchase details and product model (B0D9D6GDXK) ready when contacting support.

For general information, you may also visit the [Yasola Store on Amazon](#).

