



Manuals.plus /

› WallarGe /

› WallarGe Atomic Clock with Indoor Outdoor Temperature - Instruction Manual

WallarGe CL6007

WallarGe Atomic Clock with Indoor Outdoor Temperature - Instruction Manual

Model: CL6007

INTRODUCTION

Thank you for choosing the WallarGe Atomic Clock. This digital wall clock provides accurate time, indoor and outdoor temperature readings, date, and day of the week. Its self-setting atomic clock feature ensures precise timekeeping without manual adjustments. This manual provides detailed instructions for setup, operation, and maintenance of your new clock.



Image: The WallarGe Atomic Clock displaying time, indoor and outdoor temperatures, date, and day.

PRODUCT OVERVIEW AND COMPONENTS

The WallarGe Atomic Clock system includes the main clock unit and a wireless outdoor temperature sensor.

- **Main Clock Unit:** Displays time, date, day, indoor temperature, and outdoor temperature. Features large, easy-to-read numbers.
- **Wireless Outdoor Sensor:** Collects outdoor temperature data and transmits it wirelessly to the main clock unit.

Large Display With Big Numbers, Easy To Read



Image: Diagram showing the dimensions of the WallarGe Atomic Clock (13.8"W x 6.0"H x 1.2"D) and its outdoor sensor (1.75"W x 4.9"H).

SETUP INSTRUCTIONS

1. Battery Installation

The clock and outdoor sensor are battery-operated. Batteries are not included.

1. **Outdoor Sensor:** Insert 2 x AA batteries into the wireless outdoor sensor.
2. **Main Clock Unit:** Insert 4 x AA batteries into the main clock unit. Ensure correct polarity.

A low battery indicator will appear on the screen when batteries need replacement.

Battery Operated, No Backlight

No USB/Charging Port

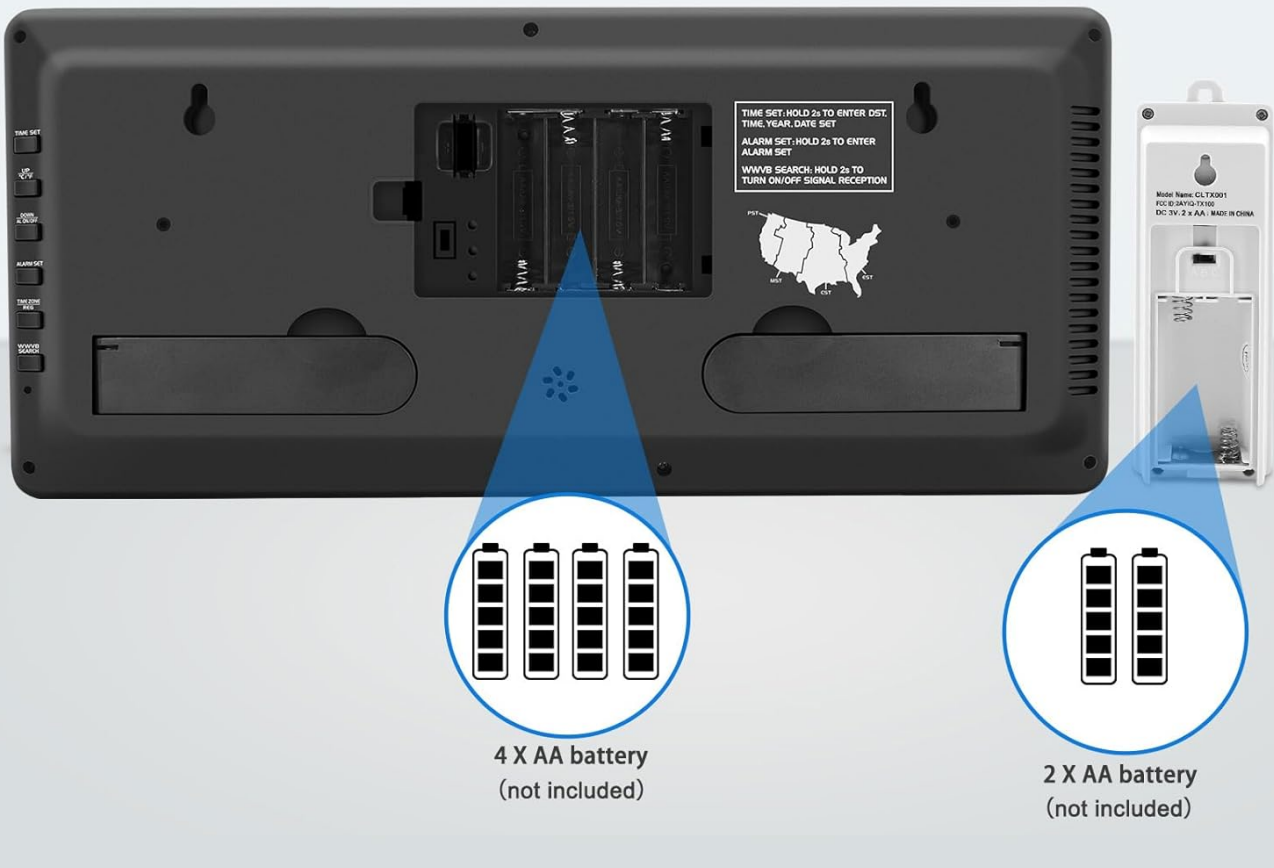
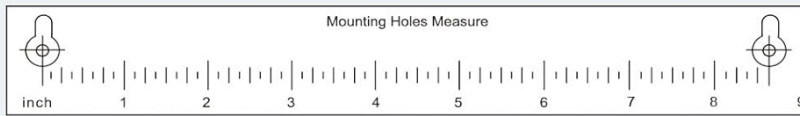


Image: Rear view of the WallarGe Atomic Clock showing the battery compartment for 4 AA batteries, and the outdoor sensor showing its compartment for 2 AA batteries.

2. Initial Synchronization and Settings

The clock automatically synchronizes with the WWVB radio broadcast from NIST in Fort Collins, Colorado. For optimal signal reception, place the clock near a window.

Use Atomic Clock to Avoid the Hassle of Setting



Put this item in a place with better signal
(e.g. by a window) for better signal reception.

Image: Diagram illustrating the atomic clock signal reception, suggesting placement near a window for better signal.

- **Time Zone Setting:** Manually set your desired time zone (e.g., EST, CST, MST, PST).
- **DST (Daylight Saving Time):** The clock features an auto DST function to automatically adjust for summer/winter time changes.
- **Date and Day:** The clock displays the current date and day of the week.

Atomic Wall Clock – Never Needs Setting (No Backlight)



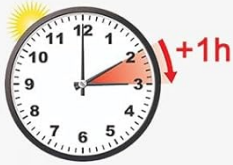
Correct time automatically every day
by WWVB searching



Image: Map showing the WWVB signal coverage across the United States, indicating how the atomic clock automatically corrects time daily.

Auto DST On/Off, Standard/Military Time Display

Spring Forward



Fall Back



Image: Visual representation of the clock's auto DST feature, showing "Spring Forward" (+1h) and "Fall Back" (-1h) adjustments.

3. Sensor Placement

Place the wireless outdoor sensor within 330 feet (100m) of the main clock unit. For best results, place the sensor in a shaded, dry location, protected from direct sunlight and precipitation, to ensure accurate temperature readings.

Atomic Clock with Indoor Outdoor Temperature



Image: Illustration showing the outdoor sensor placed under an eave, demonstrating optimal placement for accurate temperature monitoring.

OPERATING INSTRUCTIONS

Display Information

The large LCD screen (12.8x4.9 inches) with 8.4x3.1 inch time numbers provides clear visibility of all information:

- **Time:** Displays current time in large digits, including AM/PM indicator.
- **Indoor Temperature:** Measured by a built-in high-precision sensor.
- **Outdoor Temperature:** Received wirelessly from the outdoor sensor.
- **Date:** Month and day.
- **Day:** Day of the week.
- **Seconds:** Displays seconds for more accurate timekeeping.

Multiple Information Display and Functions

Catch the daily information you need just at a glance



Image: Close-up view of the clock display highlighting time, indoor/outdoor temperature, date, and day of the week.

Time Format Adjustment

The clock supports both 12-hour (AM/PM) and 24-hour (Military) time formats. Refer to the buttons on the back of the clock for specific instructions on how to toggle between these formats.

MAINTENANCE

- **Battery Replacement:** Replace batteries in both the main unit and outdoor sensor when the low battery indicator appears. Use fresh AA batteries.
- **Cleaning:** Wipe the clock and sensor with a soft, dry cloth. Do not use abrasive cleaners or chemicals.
- **Outdoor Sensor Care:** Periodically check the outdoor sensor for debris or moisture accumulation, especially in its placement area.

TROUBLESHOOTING

Problem	Possible Cause	Solution
Clock not setting automatically.	Poor WWVB signal reception.	Relocate the clock closer to a window or in an area with less interference. Ensure it's facing the correct direction for signal reception (towards Fort Collins, CO).
Outdoor temperature not displaying or inaccurate.	Sensor out of range, low sensor battery, or interference.	Ensure sensor is within 330 feet (100m) of the clock. Replace sensor batteries. Check for large metal objects or electronics between the sensor and clock that might cause interference.
Display is dim or blank.	Low main unit battery.	Replace the 4 x AA batteries in the main clock unit. Note: This model does not have a backlight.
Time is incorrect after manual adjustment.	Atomic signal override.	The atomic clock will attempt to correct itself. If you need to manually set, ensure the atomic signal reception is temporarily disabled or allow it to re-synchronize.

SPECIFICATIONS

Feature	Detail
Brand	WallarGe
Model Number	CL6007
Display Type	Digital
Special Features	Atomic Clock, Indoor/Outdoor Temp, DST, Date, Day of the week
Product Dimensions	13.8"W x 6"H
Power Source	Battery Powered (Clock: 4xAA, Sensor: 2xAA - not included)
Indoor/Outdoor Usage	Indoor (Clock), Outdoor (Sensor)
Material	Acrylonitrile Butadiene Styrene (ABS)
Mounting Type	Tabletop, Wall Mount
Outdoor Sensor Range	Up to 330 feet (100m)

WARRANTY AND SUPPORT

For warranty information and customer support, please refer to the contact details provided with your product packaging or visit the official WallarGe website. Keep your purchase receipt for warranty claims.

Customer Support Email: WallarGe@outlook.com