

Manuals+

[Q & A](#) | [Deep Search](#) | [Upload](#)

manuals.plus /

- › [CARPURIDE](#) /
- › [Carpuride W702 Pro Motorcycle CarPlay Screen User Manual](#)

CARPURIDE MC-702 Pro

Carpuride W702 Pro Motorcycle CarPlay Screen User Manual

Model: MC-702 Pro

INTRODUCTION

The Carpuride W702 Pro is a portable 7-inch touchscreen display designed for motorcycles, offering wireless Apple CarPlay and Android Auto functionalities. It features an upgraded dual Bluetooth system, an intercom function, navigation capabilities, and built-in compass and barometer. This manual provides detailed instructions for setup, operation, maintenance, and troubleshooting to ensure optimal performance and user safety.



Figure 1: Carpuride W702 Pro device and components.

SETUP

1. Installation

The Carpuride W702 Pro comes with two types of mounting brackets for versatile installation on your motorcycle: a U-shaped bracket and a square bracket. Both are designed for secure and stable attachment.

U-shaped Extension Rod Bracket Installation Mode

1. Attach the mount to the handlebar using a Phillips screwdriver.
2. Clamp the connecting rod to the mount.
3. Insert the device and adjust its position as desired. Tighten the adjustment ring to secure it.
4. Installation is complete.

Square Bracket Installation Mode

1. Use the standard 12mm silicone pad, which can be stacked up to 18mm. Choose whether to stack the silicone pads based on the thickness of the motorcycle handlebar.

2. Align the screws and nuts of the bracket and tighten them to secure it to the motorcycle handlebar.
3. Align the grooves at the connection point of the motorcycle screen bracket and slot them in. Then tighten them with screws.
4. Installation is complete.

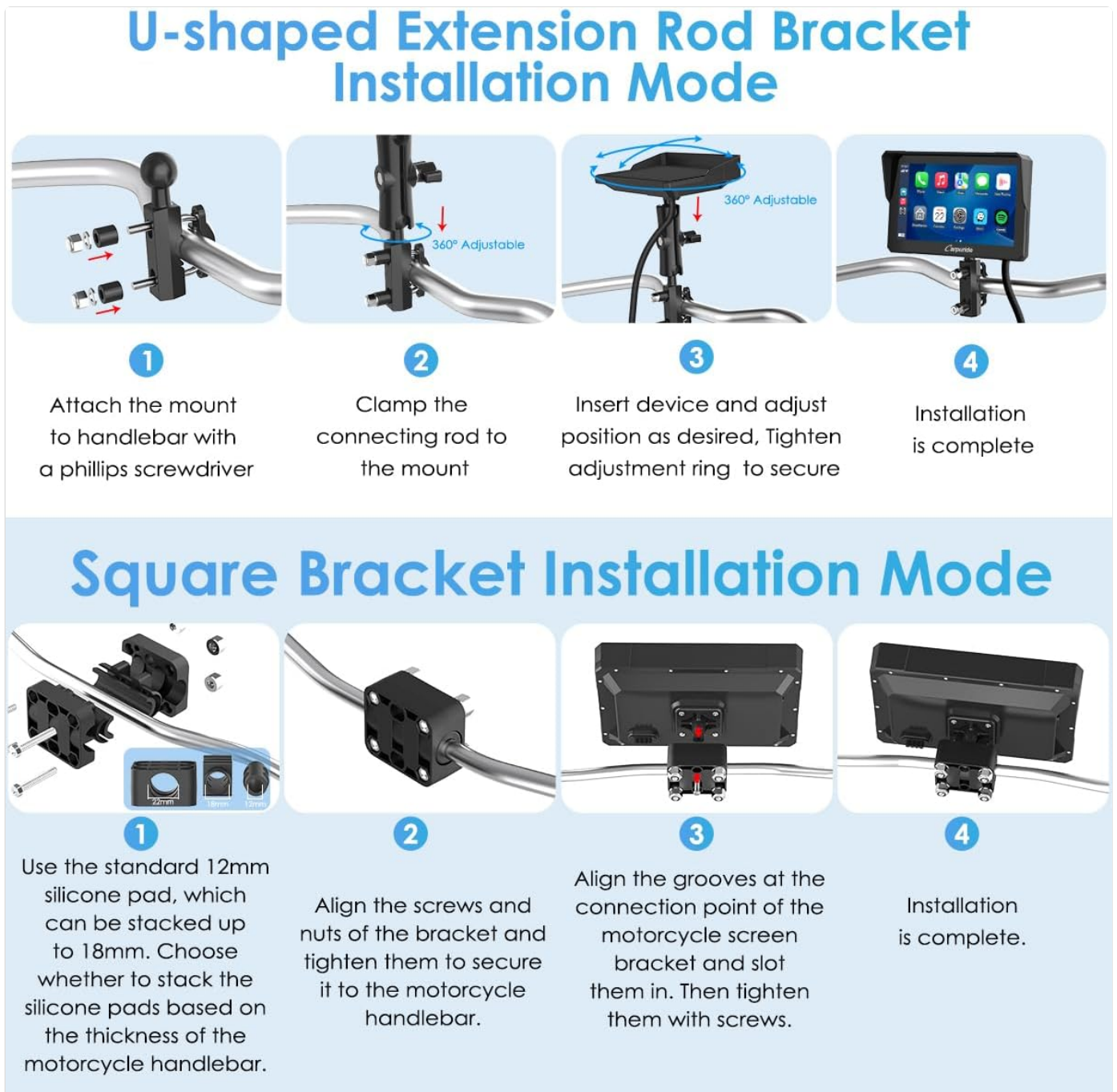


Figure 2: Installation diagrams for U-shaped and Square brackets.

2. Power Connection

The W702 Pro offers two power connection options:

- **Direct Battery Connection:** Connect the power line directly to the motorcycle's battery. Ensure the output voltage and current are 12V and 1A respectively. The device has built-in reverse connection protection.
- **USB Cable Connection:** Connect the USB cable directly to the motorcycle's USB port. Ensure the motorcycle's USB port outputs 4.5V, 2.5A or higher. If the voltage or current is insufficient, the screen may turn off.

Installation Diagram

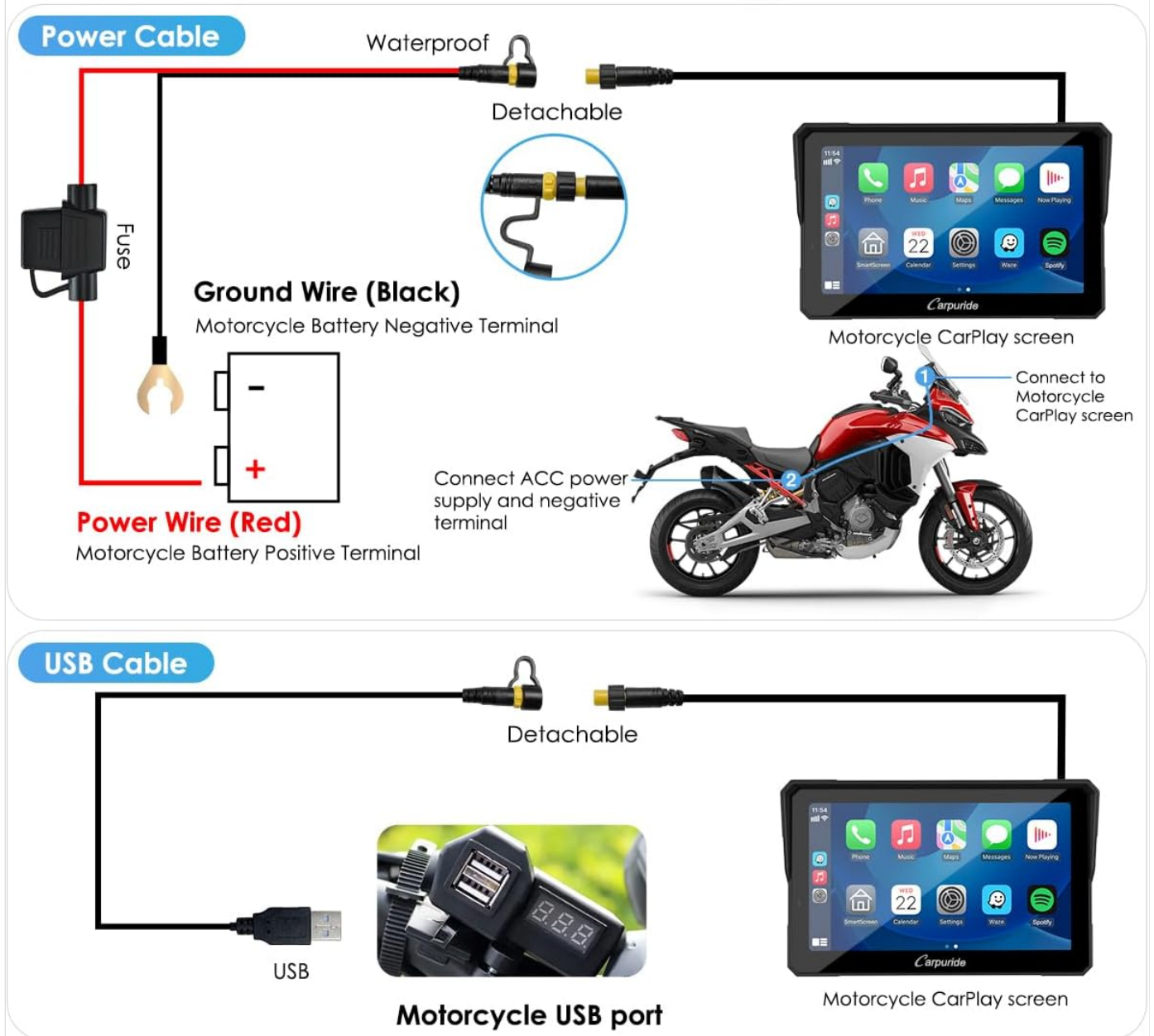


Figure 3: Power connection options.

OPERATING INSTRUCTIONS

1. Wireless CarPlay and Android Auto

The Carpuride W702 Pro supports wireless Apple CarPlay and Android Auto, allowing access to navigation, calls, music, and messages via voice assistants (Siri or Google Assistant).

Requirements:

- **For Apple CarPlay:** iPhone 6 or later, iOS 13 or later. CarPlay system and iPhone's voice system must be enabled. Siri must be enabled.
- **For Android Auto:** Phone must support 5GHz Wi-Fi and run Android 11 or later. VPN function must be off. Android Auto, Google Maps, Google Voice app must be updated to the latest version.

Note: Some applications may not be compatible with Apple CarPlay or Android Auto due to agreements with Apple and Google. Ensure your phone supports wireless CarPlay or Android Auto before purchase.

Connection Steps:

- **For Apple CarPlay:**

1. Open Apple CarPlay on the device.
2. On your iPhone, search for and select the Wi-Fi network "66666666" to connect.
3. Enter the password "66666666" and click "Join".
4. Connection successful.
5. Enter CarPlay.

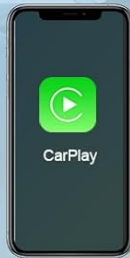
- **For Android Auto:**

1. Open Android Auto on the device.
2. Use Wi-Fi to find "carpuride-xxxx".
3. Enter the code "66666668".
4. Click "Yes".
5. Connected successfully.
6. Enter Android Auto.

CarPlay

To use wireless CarPlay, you need to meet the following requirements:

- An iPhone running iOS 6 or above
- An iPhone system version requires iOS 13 and above
- It also requires the CarPlay system and the iPhone's voice system to be turned on.
- Please check if Siri is enabled.



Android Auto

To use wireless Android Auto, you need to meet the following requirements:

- A phone support 5GHz Wi-Fi and running Android 11 or above.
- Cannot turn on VPN function on mobile phone.
- A phone that supports the Android Auto, Google Maps, Google, Google Voice app, must update the latest version.
- Before purchasing, please make sure your phone supports wireless Carplay or wireless Android Auto.



Incompatible Phone Models

- Samsun Series (Samsun S20, Samsun S23, Samsun Note 20, etc.)
- Huawei Series (10 Pro, P30 lite MAR-LX1A, Mate 20, Mate 20 Pro, Mate lite 10, P40 Pro, P40, P30, P30 Pro, etc.)
- Xiaomi Series (Xiaomi 12 Pro, Xiaomi 11 lite, Xiaomi 9, etc.)
- Oppo Series (Oppo Reno 2, Oppo RENO2 Z, A16S, etc)
- Galaxy A20 (Model SM-A205g), Redmi 9, M22, P smart 2019 - POT-LX1, Nova 5t, etc



Figure 4: Compatibility and requirements for CarPlay and Android Auto.

HD

1024*600
Alta risoluzione

IPS

Angolo di visione completo

2.5D

Schermo curvo

1000

1000 Nit



Figure 5: Apple CarPlay connection steps.



Figure 6: Android Auto connection steps.

2. Dual Bluetooth and Intercom Function

The W702 Pro features upgraded dual Bluetooth technology, enabling connection to two Bluetooth headsets/helmets simultaneously for music sharing and intercom functionality between two riders.

BT Trans (Bluetooth Transmission) Mode:

- **Single-person Connection Mode:** Connect your smartphone to the W702 Pro via Bluetooth. Then, connect your Bluetooth headset/helmet to the W702 Pro.
- **Two-person Connection Mode:** Connect two Bluetooth headsets/helmets to the W702 Pro. Music and navigation can be shared. Voice assistant commands and phone call audio are transmitted only to Bluetooth 1; therefore, the main rider should connect to Bluetooth 1.

Bluetooth Trans (Single-person Connection Mode)

1. Go to the "Audio Output" and enter the BT trans interface. Select BT trans, turn on the cycling helmet, and click on "BT search" to search for and pair with the cycling helmet or headset .
2. Clicking the "Disconnect" button, and seeing "Connected" means the connection is successful.
3. When using BT trans output, make sure your phone is not connected to BT headset. If it is connected, disconnect and delete the pairing records from the BT headset in the phone's Bluetooth list.



Bluetooth Trans (Two-person Connection Mode)

Connecting two Bluetooth headset/helmets to our W702 Pro carpalpy screen simultaneously enables music sharing between two riders. However when voice assistant command and phone call's audio can be only transmitted to Bluetooth 1, so it is recommended that the main riders connect Bluetooth 1.



iPlay/ Auto (Bluetooth Audio)

1. Use your phone to connect CarPlay or Android Auto of Carpuride Screen, make sure the connection is successful.
2. Click "Audio Output" select "Iplay/auto" mode. Then use your phone to connect your Bluetooth headset to play audio.
3. Make sure to disconnect and delete the Bluetooth headset connection records from Carpuride Screen.



Figure 7: Bluetooth Trans connection modes.

Using the Intercom Function:

1. Click the audio output icon on the home page and select "BT Trans" mode. Connect both Bluetooth 1 and Bluetooth 2 simultaneously.
2. Click the intercom icon on the home page to activate intercom mode. Bluetooth 1 and Bluetooth 2 can now make Bluetooth calls.

Note: The effective Bluetooth distance for intercom is approximately 10 cm, primarily for communication between the main rider and a co-rider on the same motorcycle.

Supporting Music Sharing/intercom function

Connecting two earphones to our device simultaneously enables music sharing between two riders or use the intercom function



Max distance 10M



Figure 8: Intercom function in use.

3. Light Sensing Design

The device features a light sensor that automatically adjusts screen brightness based on ambient light conditions. This protects your eyes and promotes safer riding by ensuring optimal visibility day or night.

Note: Android phones, when using maps, cannot automatically switch to night mode. You must manually switch to night mode each time you turn on the device.

Light Sensing Design

The light-sensing design enables automatic adjustment of screen brightness based on the surrounding ambient brightness, ensuring eye protection and promoting safer riding conditions.



Daytime

Night



Note: Android phones, when using maps, cannot automatically switch to night mode. only to manually switch to night mode every time you turn on the device.



Figure 9: Light sensing feature for automatic brightness adjustment.

4. Compass & Barometer

For outdoor exploration, the integrated compass and barometer functions help you stay safe by providing directional guidance and altitude measurements, preventing you from getting lost.

Compass & Barometer

When you ride and explore outdoors, you often face the situation of getting lost and not knowing the altitude, our compass function and barometer measurement function keep you safe while riding



Figure 10: Compass and Barometer features for outdoor navigation.

5. Media Playback and Voice Control

The W702 Pro supports TF cards up to 64GB, allowing you to enjoy your favorite music or videos during your journey. Voice control via Siri or Google Assistant enables hands-free operation for calls, navigation, and music playback.

CarPlay

Per utilizzare CarPlay wireless, devi soddisfare i seguenti requisiti:

- Un iPhone con iOS 6 o versione successiva
- Una versione del sistema iPhone richiede iOS 13 e versione successiva
- Richiede inoltre che il sistema CarPlay e il sistema vocale dell'iPhone siano attivati.
- Controlla se Siri è abilitato.



Android Auto

Per utilizzare Android Auto wireless, devi soddisfare i seguenti requisiti:

- Un telefono che supporta Wi-Fi a 5 GHz e che esegue Android 11 o versioni successive.
- Non è possibile attivare la funzione VPN sul telefono cellulare.
- Un telefono che supporta Android Auto, Google Maps, Google, Google Voice App, deve aggiornare all'ultima versione.
- Prima dell'acquisto, assicurati che il tuo telefono supporti Carplay wireless o Android Auto wireless.



Modelli di telefono incompatibili

- Samsun Series (Samsun S20, Samsun S23,,Samsun Note 20, etc.)
- Huawei Series (10 Pro, P30 lite MAR-LX1A, Mate 20 ,Mate 20 Pro, Mate lite 10, P40 Pro, P40, P30, P30 Pro,etc.)
- Xiaomi Series (Xiaomi 12 Pro, Xiaomi 11 lite, Xiaomi 9,etc.)
- Oppo Series (Oppo Reno 2, Oppo RENO2 Z,A16S,etc)
- Galaxy A20 (Model SM-A205g), Redmi 9,M22.,P smart 2019 - POT-LX1, Nova 5t, etc



Figure 11: TF card support for media.



Figure 12: Voice control functionality.

MAINTENANCE

1. IP67 Waterproof and Anti-theft Design

The W702 Pro features an IP67 waterproof and durable design, ensuring normal operation even in rain or intense sunlight. This allows for worry-free use in various weather conditions. The detachable anti-theft bracket provides added security and convenience.

The device operates perfectly within a temperature range of -20 °C to 70 °C.



Figure 13: Device operating in rainy conditions, demonstrating IP67 waterproof rating.

TROUBLESHOOTING

- **Incompatible Phone Models:** The device may not be fully compatible with Samsung Note and S series, as well as Huawei and Xiaomi series. Before purchasing, ensure your phone supports wireless CarPlay or wireless Android Auto.
- **USB Cable Power Issues:** If using the USB cable, ensure the motorcycle's USB port outputs 4.5V, 2.5A or higher. Insufficient voltage or current may cause the screen to turn off.
- **TPMS Function:** This product does NOT have a Tire Pressure Monitoring System (TPMS) function. If your manual indicates TPMS, please contact customer support for the correct manual.
- **Application Compatibility:** Some applications cannot be used with Apple CarPlay and Android Auto. This is not a product issue but rather due to these applications not having agreements with Apple and Google. Use apps that have agreements with Apple and Google.
- **Android Night Mode:** Android phones, when using maps, cannot automatically switch to night mode. You must manually switch to night mode each time you turn on the device.

SPECIFICATIONS

Feature	Detail
Manufacturer	Carpuride
Model Number	MC-702 Pro
Product Dimensions	18.2 x 4.42 x 11.4 cm; 960 grams
Screen Size	7 Inches
Screen Resolution	1024*600 IPS HD Touch Screen
Brightness	Up to 1000 nits peak brightness
Connectivity Technology	Bluetooth, Wi-Fi (Wireless CarPlay/Android Auto)
Special Features	Upgraded Dual Bluetooth, Waterproof (IP67), Light Sensor Design, Intercom Function, Compass, Barometer

Operating Temperature	-20 °C to 70 °C
Supported Storage	TF cards up to 64GB
Audio Output Mode	Stereo

WHAT'S IN THE BOX

The Carpuride W702 Pro package includes the following components:

- 1x Motorcycle Carplay Screen
- 1x U-shaped Bracket
- 1x Square Bracket
- 1x Power Cable
- 1x USB Cable
- 1x User Manual



Figure 14: Package contents.

WARRANTY AND SUPPORT

For warranty information and product support, please refer to the specific warranty details provided with your purchase or contact Carpuride customer service. Amazon's return policy allows for product returns within 30 days of receipt if you change your mind. For defective or damaged products, please consult Amazon's help page on returns and refunds.

For further assistance or inquiries, please visit the official Carpuride store on Amazon or contact their support channels.

Official Store: [Carpuride Amazon Store](#)

OFFICIAL PRODUCT VIDEOS

No official product videos from the seller were found for this product in the provided data.

