

OUKITEL WP28E

OUKITEL WP28E Rugged Smartphone User Manual

Model: WP28E

INTRODUCTION

This manual provides essential instructions for the safe and efficient use of your OUKITEL WP28E Rugged Smartphone. Please read this manual thoroughly before operating your device and retain it for future reference.

PACKAGE CONTENTS

Verify that all items are present in your package:

- OUKITEL WP28E Smartphone
- USB-C Data Cable
- Power Adapter (Charger)
- SIM Ejector Tool (Card Needle)
- User Manual
- Warranty Card

OUKITEL WP28E

Accessories



- ✓ 1. Smartphone
- ✓ 2. Data Cable
- ✓ 3. Charger
- ✓ 4. Card Needle
- ✓ 5. User Manual
- ✓ 6. After-sales card

Image: Contents of the OUKITEL WP28E retail box, showing the smartphone, USB-C cable, power adapter, SIM ejector tool, user manual, and warranty card.

Your browser does not support the video tag.

Video: Unboxing the OUKITEL WP28E smartphone, demonstrating the contents of the package and the initial handling of the device.

SETUP

1. SIM Card and TF Card Installation

The OUKITEL WP28E supports Dual SIM (Nano+Nano) or one Nano SIM and one TF card for expanded storage up to 1TB. Use the provided SIM ejector tool to open the SIM tray. Insert your Nano SIM card(s) and/or TF card into the designated slots, ensuring correct orientation. Close the tray securely to maintain water and dust resistance.

2. Initial Charging

Before first use, fully charge the device. Connect the USB-C cable to the phone's charging port and the power adapter.

Plug the adapter into a wall outlet. The phone features an 18W fast charging function. The 10600mAh battery provides extended usage times.



Image: The OUKITEL WP28E highlighting its 10600mAh battery capacity and 18W fast charging capability, along with estimated usage times.

3. Powering On/Off

To power on, press and hold the Power button located on the side of the device until the OUKITEL logo appears. To power off, press and hold the Power button, then select "Power off" from the options on the screen.

OPERATING YOUR DEVICE

1. Android 14 Operating System

Your OUKITEL WP28E runs on Android 14, offering an intuitive user interface and enhanced privacy features. Navigate through menus, open applications, and customize settings using the touchscreen display.



Image: The OUKITEL WP28E display showcasing the Android 14 operating system with multiple applications and widgets.

2. Display Features

The device features a 6.52-inch HD+ display with a resolution of 720x1612 pixels and a 60Hz refresh rate. This provides a clear and smooth visual experience for daily use, including web browsing and app interaction.

6.52" HD Display

The world of vision has never been wider.



Image: The OUKITEL WP28E's 6.52-inch HD+ display, highlighting its size and visual clarity.

3. Camera Functions

Capture moments with the 13MP main camera and 5MP front camera. The camera application includes various modes such as Beauty Mode, Panorama Mode, Portrait Mode, and HDR for diverse photographic needs.

Capture Wonderful Mobile Moments



13MP
Main Camera



5MP
Front Camera



Beauty Mode



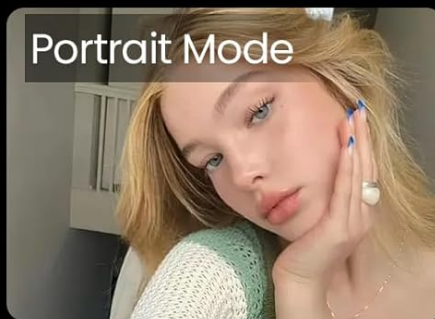
Panorama Mode



Wonderful HDR



Portrait Mode



Professional Camera

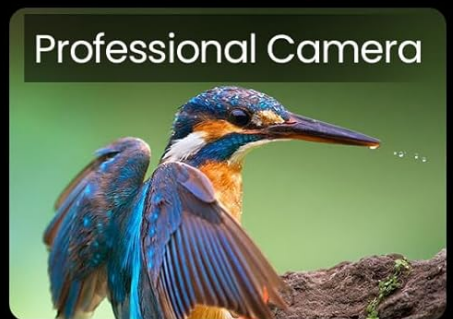


Image: The OUKITEL WP28E's camera system, detailing the 13MP main camera and 5MP front camera, along with various shooting modes.

4. Connectivity

The WP28E supports 4G cellular networks (T-Mobile compatible, not AT&T/Cricket), Wi-Fi (2.4G/5G), Bluetooth 5.0, NFC for Google Pay, and multiple navigation systems including GPS, GLONASS, Beidou, and Galileo.

5. Memory and Performance

Equipped with an octa-core processor, 16GB RAM (4GB physical + 12GB virtual), and 64GB ROM, expandable up to 1TB with a TF card (not included), the device ensures smooth multitasking and ample storage for applications and media.



Image: Visual representation of the OUKITEL WP28E's internal specifications, including 16GB RAM, 64GB ROM, and 1TB TF card expansion capability.

MAINTENANCE AND DURABILITY

1. Rugged Design

The OUKITEL WP28E is designed to withstand harsh environments, meeting IP68, IP69K, and MIL-STD-810H standards. This means it is resistant to water immersion, high-pressure water jets, dust ingress, and drops from specified heights. Ensure all port covers are securely closed to maintain these ratings.



Image: The OUKITEL WP28E showcasing its rugged features, including IP68 waterproofing, IP69K dustproofing, and MIL-STD-810H drop resistance.

Your browser does not support the video tag.

Video: Demonstrates the OUKITEL WP28E's rugged capabilities, including water, dust, and drop resistance in various outdoor scenarios.

2. Battery Longevity

To maximize battery life, avoid extreme temperatures and fully discharge the battery periodically before recharging. The large 10600mAh battery supports OTG (On-The-Go) functionality, allowing you to use your phone as a power bank to charge other devices.

TROUBLESHOOTING

If you encounter issues with your OUKITEL WP28E, consider the following basic troubleshooting steps:

- **Device not powering on:** Ensure the battery is charged. Connect to the charger and attempt to power on after a

few minutes.

- **Poor network signal:** Check your SIM card installation. Ensure you are within network coverage. Note that the device supports T-Mobile but not AT&T/Cricket.
- **Applications freezing/crashing:** Close background applications. Restart the device. Clear app cache or reinstall problematic applications.
- **Water/Dust ingress concerns:** Verify that all port covers (charging port, SIM tray) are fully sealed. If water has entered, power off the device immediately and allow it to dry completely before attempting to power on again.

For more complex issues, please refer to the "Warranty and Support" section for contact information.

SPECIFICATIONS

Feature	Detail
Model Name	WP28E
Operating System	Android 14
Display Size	6.52 Inches HD+
Resolution	720 x 1612
Refresh Rate	60Hz
RAM Memory	16 GB (4GB physical + 12GB virtual)
Storage Capacity	64 GB ROM (Expandable up to 1TB with TF card)
Main Camera	13 MP
Front Camera	5 MP
Battery Capacity	10600 mAh
Charging	18W Fast Charging
Connectivity	4G, Wi-Fi (2.4G/5G), Bluetooth 5.0, NFC, GPS, GLONASS, Beidou, Galileo
Durability Ratings	IP68, IP69K, MIL-STD-810H
SIM Type	Dual Nano SIM or Nano SIM + TF Card
Item Weight	1.46 pounds (approx. 662g)
Dimensions	10.04 x 7.05 x 2.76 inches (Package)

WARRANTY AND SUPPORT

OUKITEL provides a 30-day return policy for no reason, long-term technical support, and 24-hour online customer service. If you encounter any problems during use, please contact OUKITEL customer service for assistance. They aim to reply within 24 hours and provide solutions.

For specific warranty details, please refer to the warranty card included in your product package.

