

SANSUI ES-G24F4L

SANSUI 24 Inch Gaming Monitor User Manual

Model: ES-G24F4L

SANSUI 24 Inch Gaming Monitor 180Hz 1ms FreeSync HDR 110% sRGB FHD 1080P Computer Monitor HDMI DP Ports Eye Care
Frameless VESA Mount Cable Management

INTRODUCTION

This manual provides comprehensive instructions for the setup, operation, maintenance, and troubleshooting of your SANSUI 24 Inch Gaming Monitor (Model ES-G24F4L). Please read this manual thoroughly before using the product to ensure proper functionality and to prevent damage.

The SANSUI ES-G24F4L is a 24-inch Full HD (1080P) gaming monitor designed for an immersive visual experience. It features a 180Hz refresh rate and 1ms response time, FreeSync technology, HDR support, and 110% sRGB color gamut for vibrant and smooth visuals. It also incorporates eye care technologies for extended comfortable use.



Figure 1: Front view of the SANSUI 24 Inch Gaming Monitor (ES-G24F4L).

WHAT'S IN THE BOX

Upon opening the package, verify that all the following items are included:

- G24F4L Monitor
- HDMI Cable
- Power Adapter
- User Manual (this document)
- Quick Start Guide



Figure 2: Illustration of the package contents for the SANSUI ES-G24F4L monitor, showing the monitor, power cord, warranty card, HDMI cable, and quick installation guide.

SETUP

1. Assembling the Stand

The SANSUI ES-G24F4L monitor features a tool-free installation design for its stand. Follow these steps to assemble:

1. Carefully remove the monitor from its packaging, keeping it protected.
2. Attach the stand base to the stand neck.
3. Connect the assembled stand to the back of the monitor until it clicks into place.

The monitor stand allows for a tilt adjustment from -5° to 15° for optimal viewing angles.

BETTER BUILT

No tools needed installation



VESA Support
75×75mm



-5~15 Tilt



1



2



3

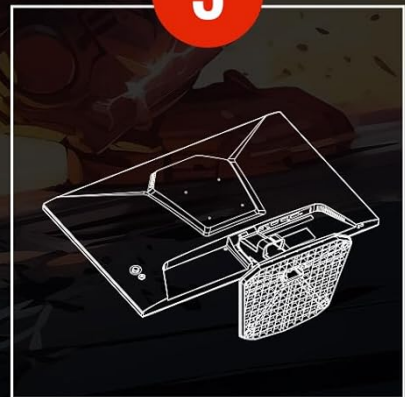


Figure 3: Step-by-step guide for the tool-free installation of the monitor stand, demonstrating how to attach the base to the neck and then to the monitor.

VESA Mount Compatibility: The monitor supports VESA mounting (75x75mm) for alternative mounting solutions. A VESA bracket is not included and must be purchased separately.

2. Connecting to a Device

The SANSUI ES-G24F4L monitor provides versatile connectivity options. Ensure your device is powered off before making connections.

- **HDMI Connection:** Use the included HDMI cable to connect your computer, gaming console, or other HDMI-enabled device to the monitor's HDMI 1.4 port. This port supports up to 180Hz refresh rate.
- **DisplayPort (DP) Connection:** Use a DisplayPort cable (not included) to connect your device to the monitor's DP 1.2 port. This port also supports up to 180Hz refresh rate.
- **Audio Output:** Connect headphones or external speakers to the 3.5mm earphone jack for audio output.

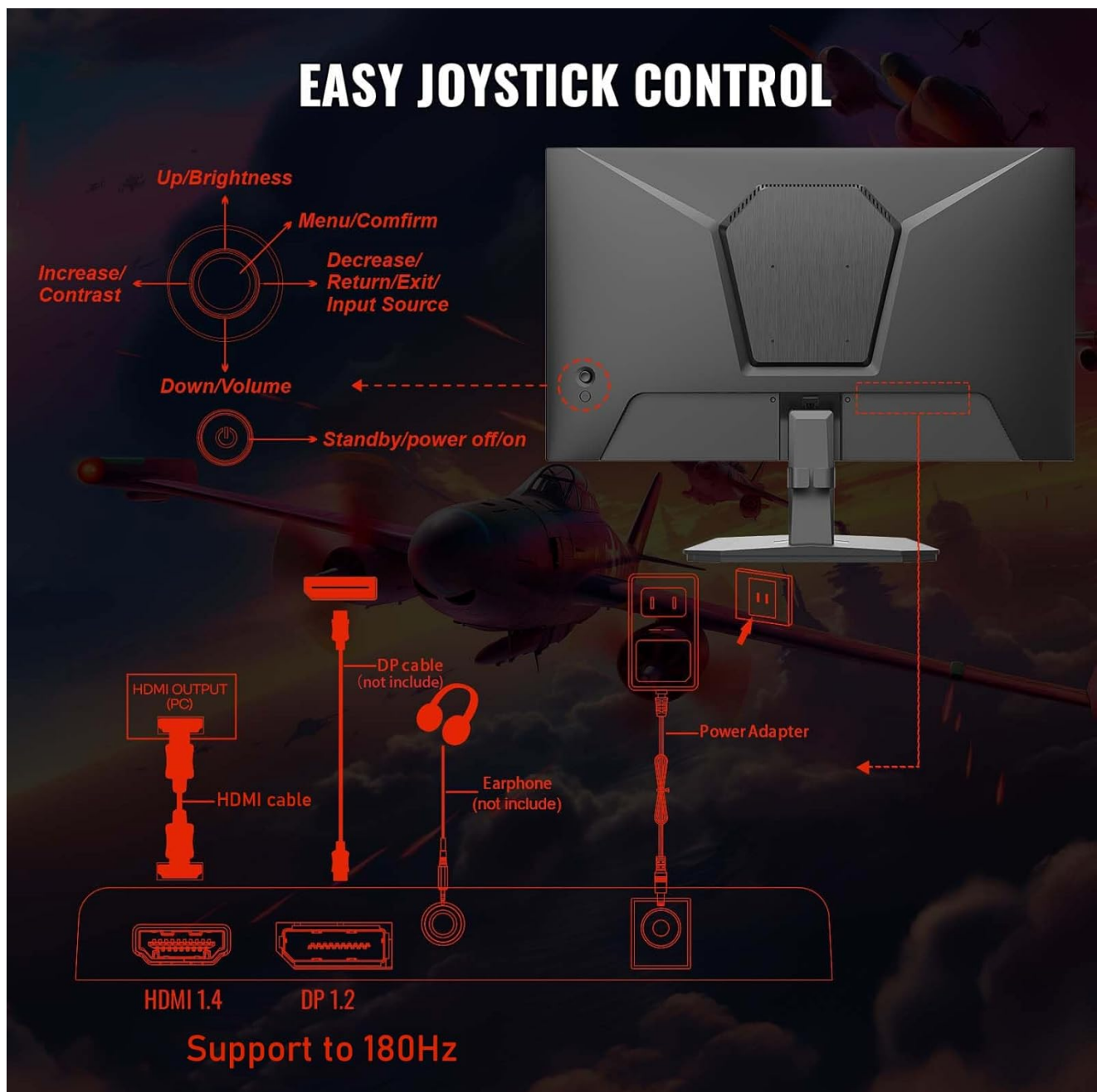


Figure 4: Rear view of the monitor detailing the HDMI, DisplayPort, earphone, and power input connections, along with the joystick control.

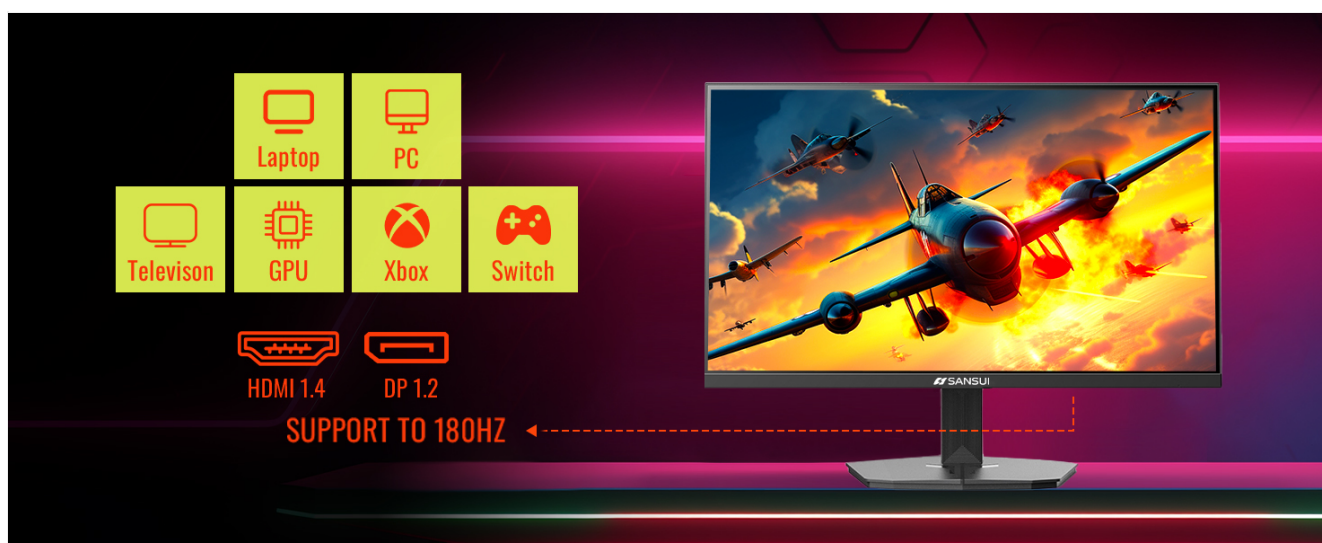


Figure 5: Connectivity options for the SANSUI monitor, illustrating compatibility with laptops, PCs, TVs, GPUs, Xbox, and Nintendo Switch via HDMI 1.4 and DP 1.2 ports.

3. Powering On

Connect the power adapter to the monitor's power input and then plug it into a power outlet. Press the power button located on the back of the monitor to turn it on.

OPERATING INSTRUCTIONS

1. Joystick Control

The monitor features a single joystick control located on the back for easy navigation of the On-Screen Display (OSD) menu and quick adjustments.

- **Press In:** Menu / Confirm selection.
- **Up:** Increase Brightness.
- **Down:** Decrease Volume.
- **Left:** Decrease / Return / Exit.
- **Right:** Increase / Input Source selection.
- **Long Press (In):** Standby / Power off / Power on.



Figure 6: Detailed functions of the joystick smart control for adjusting brightness, volume, navigating menus, and selecting input sources.

2. Display Features and Modes

The SANSUI ES-G24F4L monitor offers several features to enhance your viewing and gaming experience:

- **180Hz Refresh Rate & 1ms Response Time (MPRT):** Provides ultra-smooth motion and reduces ghosting and motion blur, crucial for fast-paced gaming.
- **FreeSync Technology:** Eliminates screen tearing and stuttering by synchronizing the monitor's refresh rate with your graphics card's frame rate.
- **HDR Support:** Enhances brightness, contrast, and color depth for a more dynamic and lifelike image.
- **110% sRGB Color Gamut:** Delivers accurate and vibrant colors, suitable for both gaming and professional tasks. The monitor supports 8-bit color depth for 16.7 million colors.
- **Eye Care Technology:** Features low blue light, anti-glare, and flicker-free technologies to reduce eye strain during prolonged use.



Figure 7: Overview of the monitor's core features, including response time, refresh rate, color performance, and eye care.



Figure 8: Visual demonstration of the difference in motion clarity between 60Hz (14ms) and 180Hz (1ms MPRT) refresh rates.



Figure 9: Illustrates how FreeSync technology prevents screen ghosting and tearing, providing a smoother visual experience compared to when FreeSync is off.

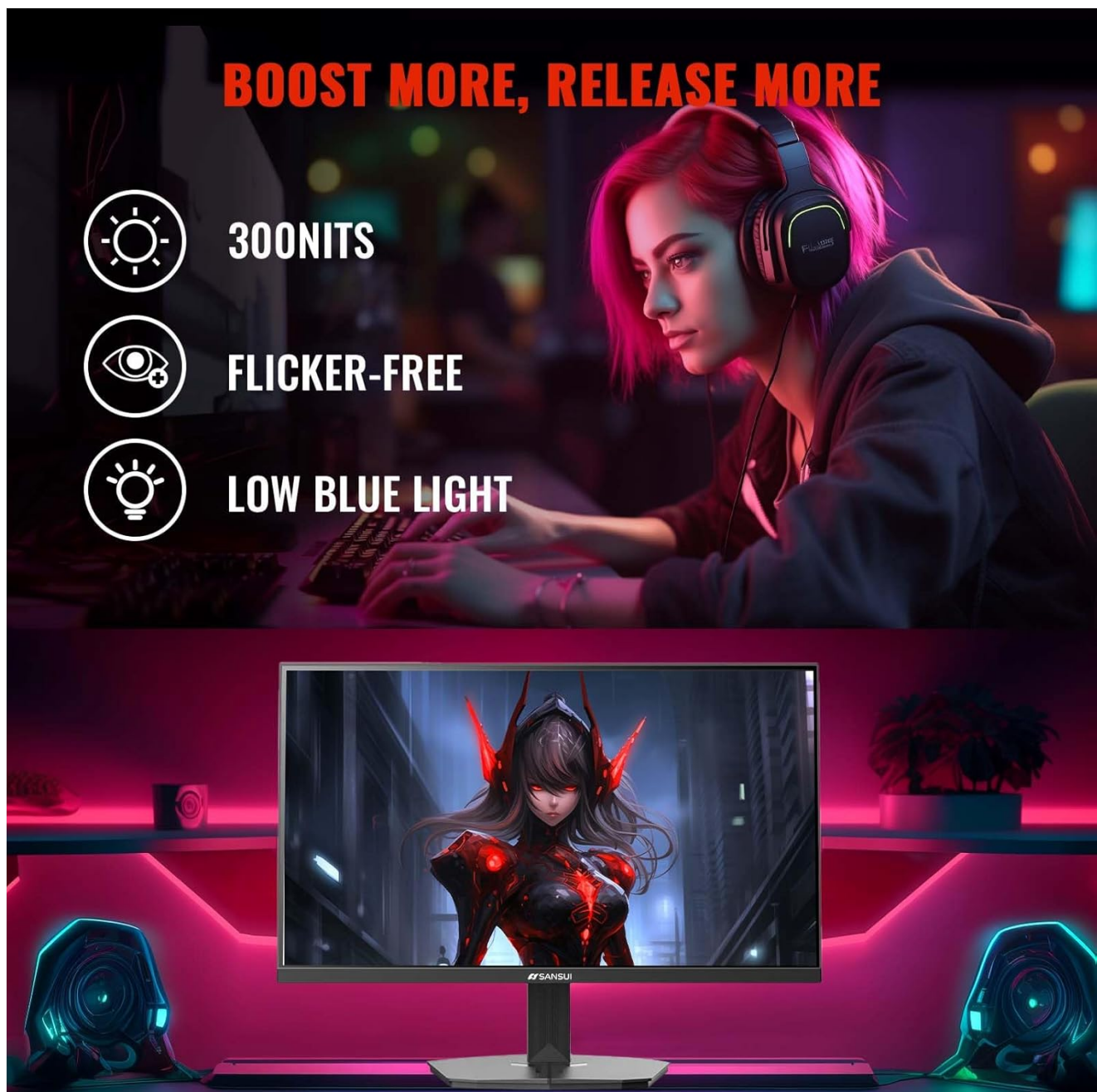


Figure 10: Highlights the monitor's eye comfort features: 300 nits brightness, flicker-free technology, and low blue light mode, designed for extended use.

3. Game Assist Features

The monitor includes several game-specific features to enhance your competitive edge:

- **CrossHair (FPS):** An on-screen crosshair overlay for improved aiming in first-person shooter games.
- **Timer (Racing):** An on-screen timer for racing games.
- **Blacklevel Adjust:** Adjusts the black levels to reveal details in dark areas, providing a clearer view in cinematic or dark game scenes.
- **RTS (Strategy) Mode:** Optimized display settings for real-time strategy games.
- **FPS (Shooters) Mode:** Optimized display settings for first-person shooter games.
- **Racing (Simulators) Mode:** Optimized display settings for racing simulator games.

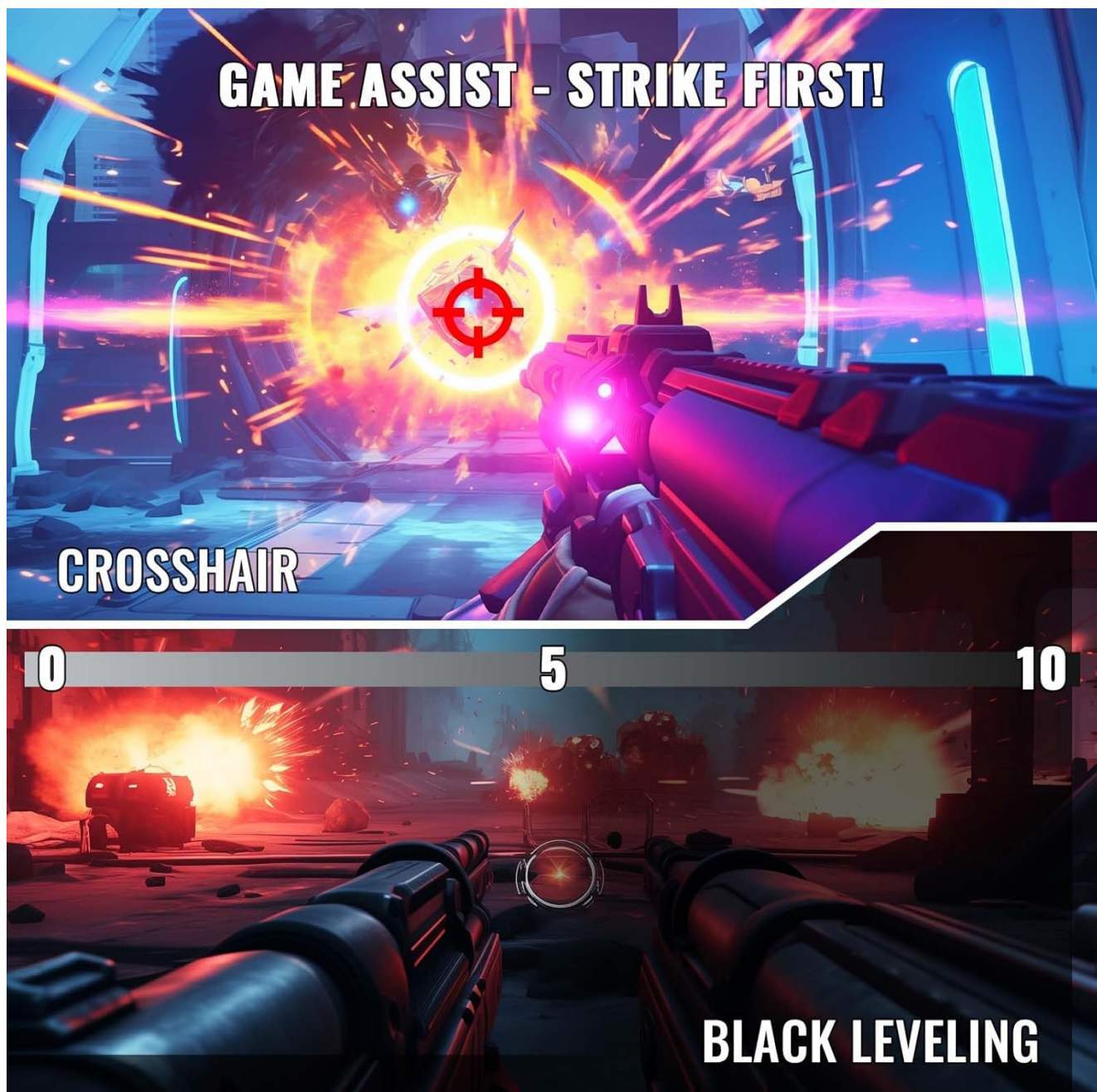


Figure 11: Examples of Game Assist features, including the Crosshair overlay for precise aiming and Black Leveling to enhance visibility in dark game environments.

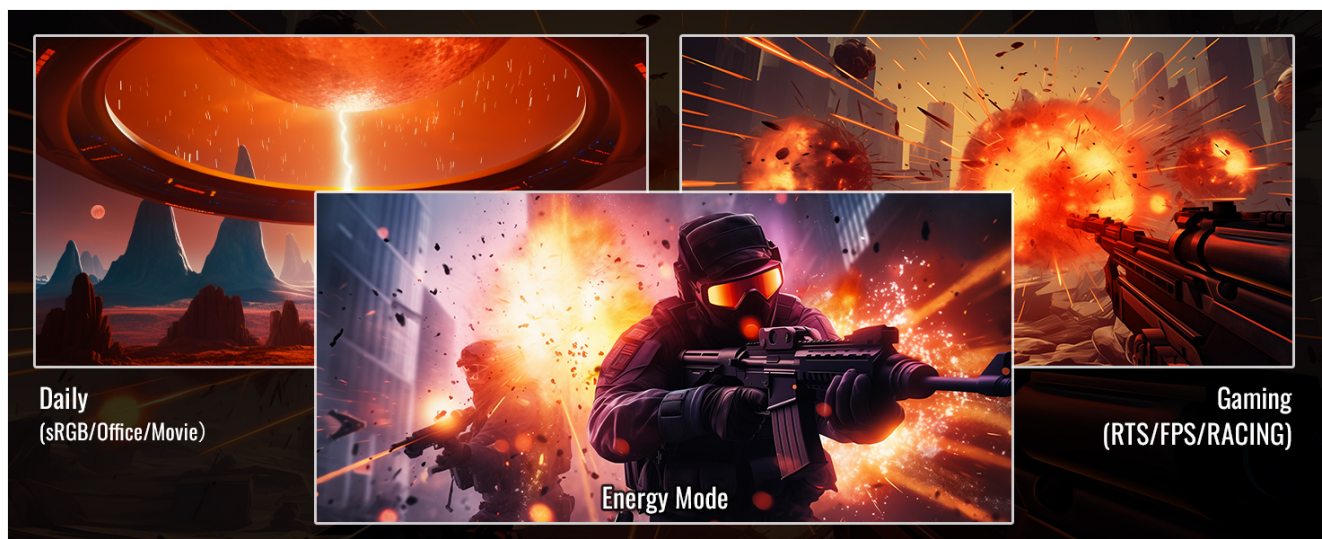


Figure 12: Visual representation of the Black Level adjustment feature, showing how increasing the black level can reveal hidden details in dark scenes.



Figure 13: Demonstrates the Pinpoint Strike feature, which provides an on-screen crosshair for enhanced accuracy in games.



Figure 14: Illustrates the different display modes available, including Daily (sRGB/Office/Movie) and Gaming (RTS/FPS/Racing), alongside an Energy Mode for power efficiency.

MAINTENANCE

Proper maintenance ensures the longevity and optimal performance of your SANSUI monitor.

- **Cleaning the Screen:** Gently wipe the screen with a soft, lint-free cloth. For stubborn marks, dampen the cloth slightly with water or a screen-specific cleaning solution. Avoid using harsh chemicals, alcohol, or abrasive materials.
- **Cleaning the Casing:** Use a soft, dry cloth to clean the monitor's casing. Do not use liquid cleaners directly on the casing.
- **Ventilation:** Ensure the ventilation openings on the monitor are not blocked. Proper airflow prevents overheating.
- **Storage:** If storing the monitor for an extended period, disconnect all cables and store it in a cool, dry place, preferably in its original packaging.
- **Power Management:** Unplug the monitor from the power outlet during lightning storms or when it will be unused for long periods.

TROUBLESHOOTING

If you encounter issues with your monitor, refer to the following common problems and solutions:

No Power / No Display

- Ensure the power adapter is securely connected to both the monitor and a working power outlet.
- Verify the power indicator light on the monitor is on. If not, press the power button.
- Check if the power outlet is functioning by plugging in another device.

No Signal

- Confirm that the video cable (HDMI or DisplayPort) is securely connected to both the monitor and your computer/device.
- Ensure the correct input source is selected on the monitor using the joystick control (navigate to Input Source).
- Check your computer's display settings to ensure the output is enabled and configured for the monitor.
- Try a different video cable or port if available.

Flickering or Distorted Image

- Check the video cable connections. Loose connections can cause flickering.
- Ensure the monitor's refresh rate is set correctly in your computer's display settings (e.g., 180Hz).
- Disable FreeSync in the monitor's OSD or your graphics card settings to see if the issue persists.
- Reduce the display resolution to see if the issue is resolved.
- Ensure no strong electromagnetic interference sources are near the monitor.

Colors Appear Washed Out or Incorrect

- Adjust the brightness, contrast, and color settings in the monitor's OSD menu.
- Ensure HDR is enabled or disabled as appropriate for your content and system settings.
- Reset the monitor to factory default settings via the OSD menu.
- Update your graphics card drivers.

Sound Issues (if using monitor's audio output)

- Ensure headphones or speakers are properly connected to the earphone jack.
- Adjust the volume using the joystick control or your computer's volume settings.
- Verify that the monitor is selected as the default audio output device in your computer's sound settings.

SPECIFICATIONS

Feature	Detail
Model Number	ES-G24F4L (also referred to as ES-G24F4H in some documentation)
Screen Size	24 Inches
Resolution	1920 x 1080 Pixels (FHD)
Aspect Ratio	16:9
Refresh Rate	180Hz
Response Time	1ms (MPRT)
Brightness	300 Candela (Nits)

Feature	Detail
Contrast Ratio	4000:1
Color Gamut	110% sRGB, 80% DCI-P3
Color Depth	8 Bits (16.7 Million Colors)
Screen Surface	Matte, Anti-glare
Connectivity	1x HDMI 1.4, 1x DisplayPort 1.2, 1x 3.5mm Audio Out
VESA Compatibility	75 x 75 mm
Tilt Adjustment	-5° to 15°
Product Dimensions (L x W x H)	7.95 x 21.2 x 16.29 inches
Item Weight	8.98 pounds
Manufacturer	EXPRESS LUCK INDUSTRIAL(ZHONGSHAN)LIMITED
Date First Available	July 13, 2024

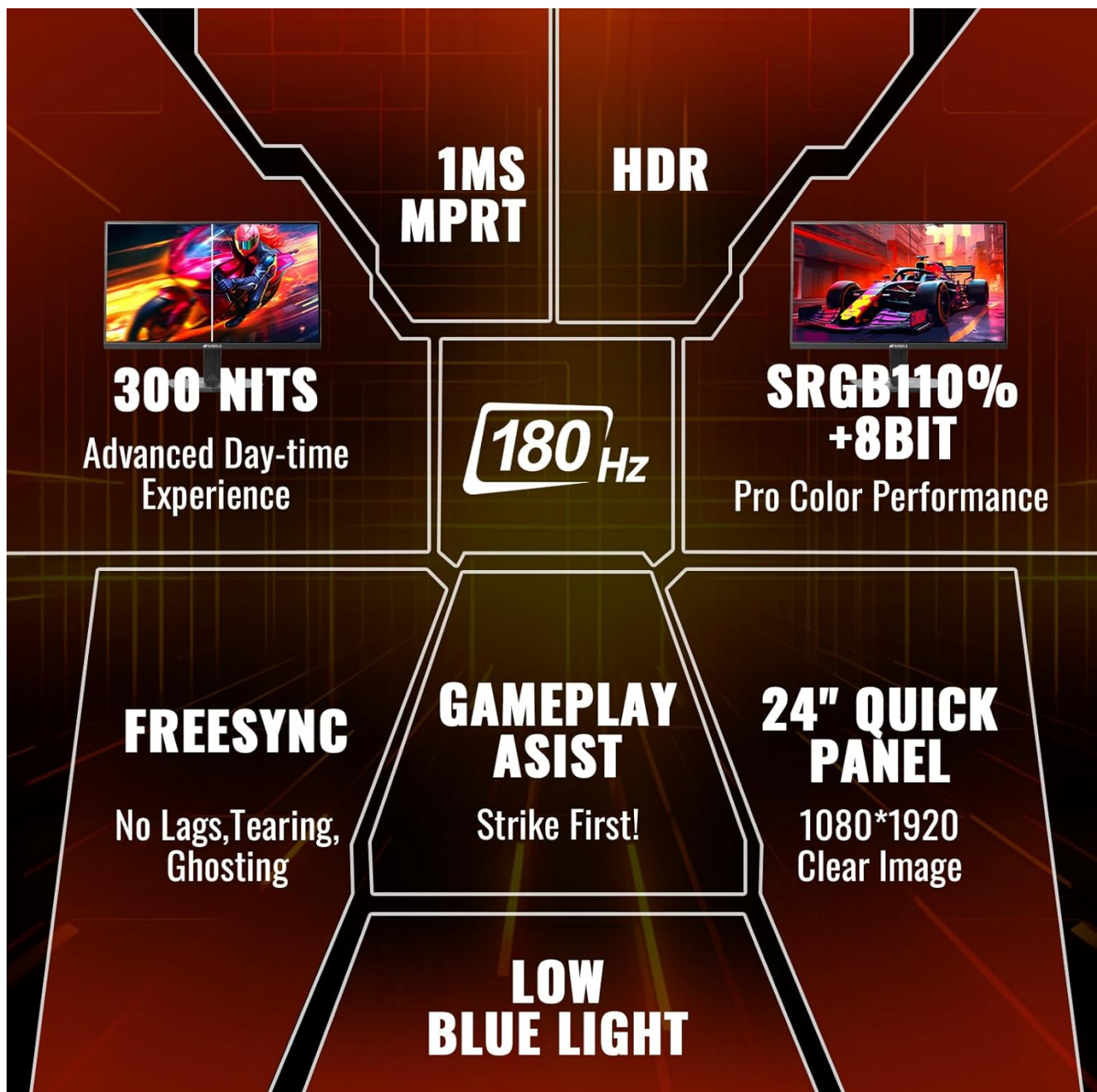


Figure 15: Summary of key performance specifications and features of the SANSUI ES-G24F4L monitor.

WARRANTY AND SUPPORT

SANSUI provides the following warranty and support for your monitor:

- **Money-back and Free Replacement:** Available within 30 days of purchase.
- **Quality Warranty:** A 1-year quality warranty covers manufacturing defects and malfunctions.
- **Technical Support:** Lifetime technical support is provided for the product.

For warranty claims or technical assistance, please refer to the contact information provided in your Quick Start Guide or visit the official SANSUI support website.

Related Documents - ES-G24F4L

	<p>EPIC Digital Door Lock User Manual and Features Guide</p> <p>Comprehensive guide to EPIC digital door locks, covering product line-up, registration, deletion, settings, and advanced features. Learn how to manage PINs, RFID cards, fingerprints, and remote controls for enhanced security.</p>
	<p>EPIC Digital Door Lock User Manual - Features, Registration, and Operation</p> <p>Comprehensive user manual for EPIC digital door locks, detailing product lineup, registration and deletion procedures for PINs, RFID cards, fingerprints, and remote controls. Covers various settings, functions, alarms, and self-diagnosis for enhanced security and convenience.</p>
	<p>EPIC Digital Door Lock User Manual - Features and Operation Guide</p> <p>Comprehensive user manual for EPIC digital door locks, detailing product lineup, registration and deletion procedures for PINs, RFID cards, fingerprints, and remote controls, along with various operational modes and troubleshooting information.</p>
	<p>Jackson ES Series Rack Conveyor Dishmachines Installation & Operation Manual</p> <p>This comprehensive manual provides essential information for the installation, operation, and maintenance of Jackson's ES Series Rack Conveyor Dishmachines. It covers models ES-4400, ES-6600, and ES-8000, detailing specifications, electrical requirements, plumbing, troubleshooting, and parts.</p>
	<p>Brainboxes Ethernet to Serial Range Quick Start Guide</p> <p>Quick start guide for Brainboxes Ethernet to Serial range devices (ES-246, ES-257, ES-313, ES-320, ES-357, ES-701, ES-279, ES-346, ES-842). Covers hardware, network setup, installation on Windows, configuration, default settings, pinouts, and LED information.</p>
	<p>SANSUI ES-24X3 Full HD Monitor User Manual</p> <p>User manual for the SANSUI ES-24X3 Full HD Monitor, providing essential safety instructions, setup guide, panel controls, OSD menu explanations, and troubleshooting tips for optimal use.</p>