

[Manuals.plus](#) /

› [BaBylissPRO](#) /

› BaBylissPRO Nano Titanium Standing Hot Roller Sets Instruction Manual BNTHR2UC

BaBylissPRO BNTHR2UC

BaBylissPRO Nano Titanium Standing Hot Roller Sets Instruction Manual

Brand: BaBylissPRO | **Model:** BNTHR2UC

1. INTRODUCTION

The BaBylissPRO Nano Titanium Compact 8-Piece Standing Hot Rollers set is designed for creating long-lasting, voluminous curls. This innovative system features a vertical design for efficient space utilization and easy access to rollers. The set includes rollers in two different sizes to achieve dynamic and dimensional styling results.

Nano Titanium technology ensures even, consistent, and gentle far-infrared heat, which helps in creating durable curls while reducing frizz for sleek and shiny hair.

2. PRODUCT COMPONENTS

- Hot Roller Unit with integrated storage drawer
- 8 Velvet-flocked Hot Rollers (4 x 1¾" and 4 x 1¼")
- 8 Color-coded Roller Pins
- 8 Butterfly Clips
- Easy-to-remove Silicone Cover (doubles as a heat mat)
- 5 ft. Power Cord with integrated cord wrap



Figure 1: Front view of the BaBylissPRO Nano Titanium Standing Hot Roller Set, showing the vertical design and roller placement.

BaBylissPRO

Includes **8 color-coded pins** and **8 butterfly clips** to hold rollers firmly in place.



Figure 2: Side view of the hot roller set with the storage drawer open, revealing the roller pins and butterfly clips.

3. SETUP AND PREPARATION

1. **Unpack:** Carefully remove all components from the packaging.
2. **Placement:** Place the hot roller unit on a flat, heat-resistant surface. Ensure adequate ventilation around the unit.
3. **Power Connection:** Unwind the 5 ft. power cord from the integrated cord wrap at the base of the unit. Plug the unit into a standard electrical outlet.
4. **Heating:** Press the power button to turn on the unit. The rollers will begin to heat. Allow approximately 5-10 minutes for the rollers to reach optimal temperature. The indicator light will illuminate when heating.

- Place roller midway on sectioned hair, roll to the root, ensuring to tuck in the ends.
- Roll hair away from face to ensure maximum volume.
- Slide the roller pin into the middle of the roller, with the straight edge towards the bottom.

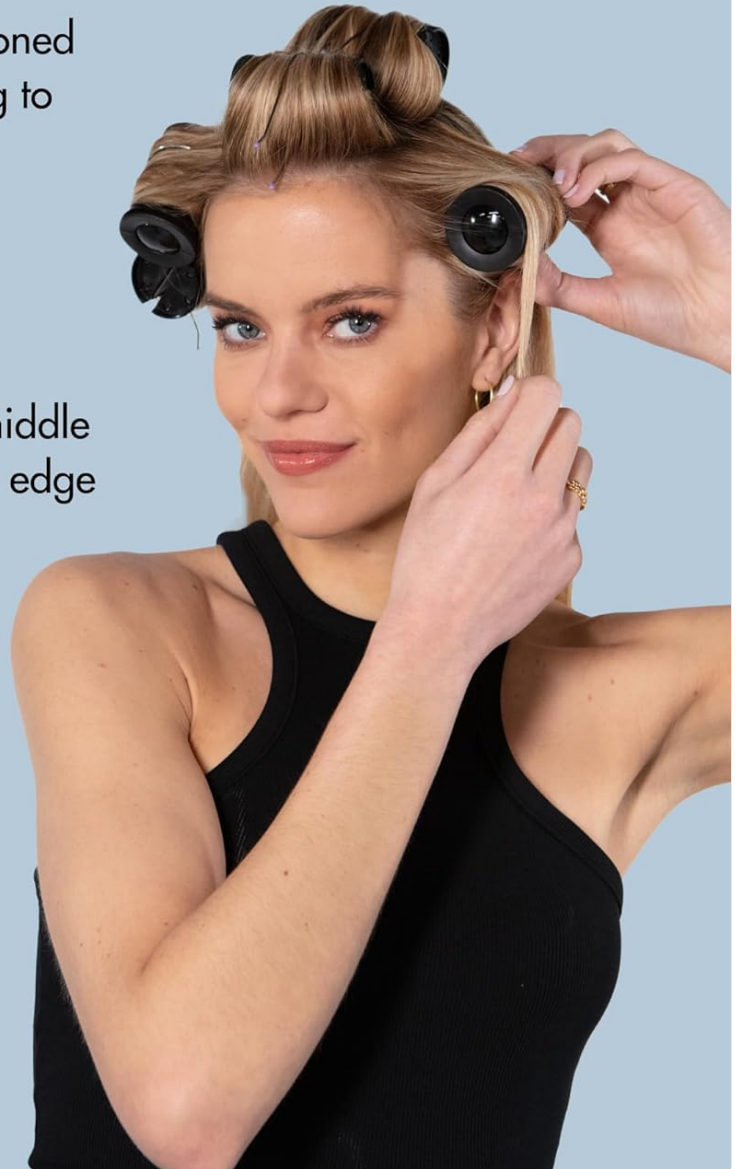


Figure 3: Back view of the hot roller set, illustrating the integrated cord wrap for organized storage.

4. OPERATING INSTRUCTIONS

Follow these steps for optimal curling results:

1. **Hair Preparation:** Ensure hair is clean, dry, and detangled. Section your hair according to the desired curl size and volume.
2. **Roller Selection:** Choose a hot roller. The set includes two sizes: 1¾" for larger, looser curls and 1¼" for tighter curls.
3. **Application:** Place the roller midway on a sectioned piece of hair. Roll the hair towards the root, ensuring to tuck in the ends for a smooth finish.
4. **Securing the Roller:** Slide a roller pin into the middle of the roller, with the straight edge positioned towards the bottom, to secure it firmly in place. Alternatively, use a butterfly clip for a secure hold.
5. **Styling Direction:** For maximum volume, roll hair away from the face.
6. **Cooling Time:** Allow the rollers to cool completely in your hair. This typically takes 10-20 minutes, depending on hair type and desired curl retention. Cooling ensures the curl sets properly.

7. **Removal:** Once cooled, carefully remove the pins/clips and then gently unroll each roller from your hair.
8. **Finishing:** Style your hair as desired. For a softer look, gently brush through the curls with your fingers or a wide-tooth comb.

BaBylissPRO

Easy-to-remove **silicon cover** acts as a heat mat to hold rollers. Rollers come in **2 sizes:**

- 1 3/4" = 4 rollers
- 1 1/4" = 4 rollers



Figure 4: Illustration of the hot roller application process, demonstrating how to roll hair towards the root and secure it with a pin.

Convenient cord wrap for the **5 ft. power cord** to keep your counter or salon station organized.



Figure 5: The two different sizes of velvet-flocked hot rollers (1¾" and 1¼") placed on the silicone heat mat, which also serves as a cover.

Your browser does not support the video tag.

Video 1: A demonstration of using the BaBylissPRO Compact Standing Hot Rollers to create voluminous curls. The video shows the application and removal process, highlighting the final styled hair.

5. MAINTENANCE AND CARE

- **Cleaning:** Ensure the unit is unplugged and completely cool before cleaning. Wipe the unit and rollers with a soft, damp cloth. Do not immerse the unit in water.
- **Silicone Cover:** The easy-to-remove silicone cover can be cleaned with mild soap and water. Ensure it is completely dry before placing it back on the unit or using it as a heat mat.
- **Storage:** Store the unit in a cool, dry place. Utilize the integrated cord wrap to keep the power cord neatly organized. The storage drawer is designed to hold pins and clips.

6. TROUBLESHOOTING

- **Rollers not heating:** Ensure the unit is properly plugged into a functional electrical outlet and the power button is pressed. Check for any visible damage to the cord or unit.
- **Curls not holding:** Ensure rollers are left in the hair until completely cool. Hair should be dry before application. For enhanced hold, use a styling product prior to rolling.
- **Rollers falling out:** Ensure pins or clips are securely inserted into the center of the roller and against the scalp. Take smaller sections of hair if rollers are too heavy.

7. SPECIFICATIONS

Model Number	BNTHR2UC
UPC	074108489760
Roller Sizes	4 x 1¾" rollers, 4 x 1¼" rollers
Material	Nano Titanium, Plastic, Velvet-flocked rollers
Power Cord Length	5 ft.
Package Dimensions	14.69 x 7.91 x 7.17 inches
Weight	4 Pounds
Hair Type	All

8. WARRANTY AND SUPPORT

This BaBylissPRO product is covered by a **1-Year Limited Warranty** from the date of purchase. For warranty claims or technical support, please refer to the contact information provided in your product packaging or visit the official BaBylissPRO website. BaBylissPRO Nano Titanium professional tools are designed for durability and performance, featuring strong, corrosion-resistant, and ultra-smooth styling surfaces. Heat is evenly distributed and maintained at a constant temperature, and ionic technology helps reduce frizz for sleek and shiny results.