

ELLE EL300

Instruction Manual: Elle Women Warm Up Scrubs Jacket

Brand: ELLE | Model: EL300

1. PRODUCT OVERVIEW

The Elle Women Warm Up Scrubs Jacket EL300 is designed for comfort and functionality in a professional setting. It features a Modern Classic fit with a snap front closure, offering ease of wear and a streamlined appearance. The jacket incorporates practical elements such as multiple pockets and stretchy knit panels for enhanced mobility.

Key Features:

- Women's Round Neck, Long Sleeve Warm Up Jacket
- Snap Front Closure for easy wear
- Two Front Pockets, including a hidden message pocket on the right
- Bungee loop at the right shoulder yoke for accessory attachment
- Front and back princess seams for a tailored fit
- Soft, stretchy knit back side panels and cuffs for added comfort and flexibility
- Center back length: 27 inches





Figure 1.1: Front view of the Elle Women Warm Up Scrubs Jacket EL300 in white. This image displays the full front of the jacket, highlighting the snap front closure, round neck, and the placement of the front pockets.



Figure 1.2: Back view of the Elle Women Warm Up Scrubs Jacket EL300. This image shows the rear of the jacket, emphasizing the princess seams and the knit panels on the back sides, which contribute to the garment's comfortable fit.





Figure 1.3: Detailed view of the snap front closure and the front pocket area of the jacket. This close-up highlights the quality of the snaps and the design of the pockets, including the hidden message pocket.

2. SETUP AND SIZING

Before wearing your new Elle Warm Up Scrubs Jacket, it is recommended to review the sizing and fit guides to ensure optimal comfort and appearance. The jacket is designed with a Modern Classic Fit.

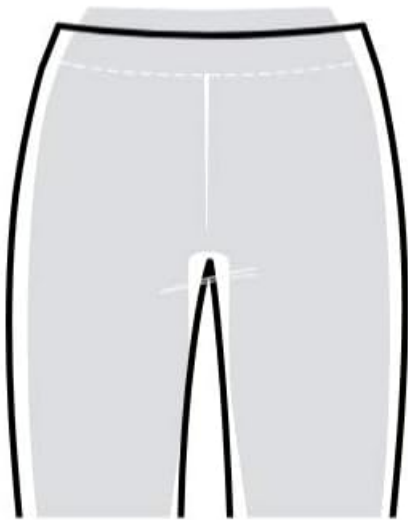
Garment Fit Guide:

Understanding the garment fit is crucial for comfort. The Elle EL300 jacket is categorized under 'Modern Classic Fit'.

GARMENT FIT GUIDE

All garments are Modern Classic Fit.

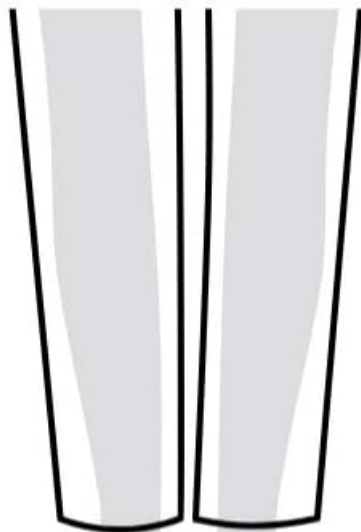
Pant Waist Fit:
Mid Rise



Pant Waist Fit:
Natural Rise



Pant Leg Fit:
Tapered



Pant Leg Fit:
Straight

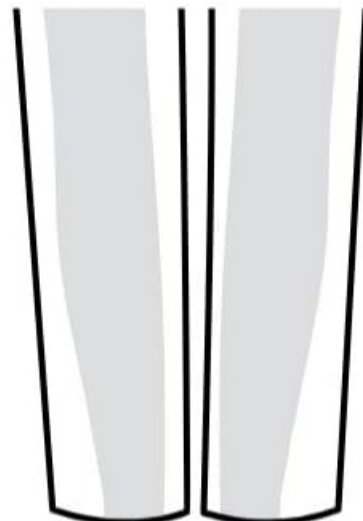


Figure 2.1: Garment Fit Guide. While this specific image illustrates pant fits (Mid Rise, Natural Rise, Tapered, Straight), the jacket adheres to the 'Modern Classic Fit' philosophy, which generally implies a comfortable, slightly tailored silhouette that is not too loose or too tight.

Size Chart:

To select the correct size, please refer to the following size chart. Measurements are provided in inches.

SIZE CHART				
Measurements are in inches.				
	Size	Bust	Waist	Hips
XXS	0	31-32	23-24	33-34
XS	2-4	33-34	25-26	35-36
S	6-8	35-36	27-28	37-38
M	10-12	37-39	29-31	39-41
L	14-16	40-43	32-35	42-45
XL	18-20	44-47	36-39	46-49
2XL	22-24	48-51	40-43	50-53
3XL	26-28	52-55	44-47	54-57
4XL	30-32	56-59	48-51	58-61
5XL	34-36	60-63	52-55	62-65

Figure 2.2: Elle Apparel Size Chart. This chart provides measurements for Bust, Waist, and Hips across various sizes (XXS to 5XL), allowing you to find the most appropriate size for your body measurements.

3. OPERATING INSTRUCTIONS

The Elle Warm Up Scrubs Jacket is designed for ease of use in a professional environment.

Wearing the Jacket:

1. Unsnap all front closures.
2. Place the jacket over your shoulders and arms.
3. Align the front edges and secure the snap closures from bottom to top, or as preferred for comfort.
4. Utilize the two front pockets for carrying small items. The right pocket features a hidden message pocket for discreet storage.
5. The bungee loop on the right shoulder yoke can be used to secure ID badges or other small, lightweight accessories.

4. CARE AND MAINTENANCE

Proper care will extend the life and maintain the appearance of your Elle Warm Up Scrubs Jacket. The jacket is made from 92% Polyester and 8% Spandex.

Washing Instructions:

- Machine wash cold with like colors.
- Use a gentle cycle.
- Do not bleach.

Drying Instructions:

- Tumble dry low.
- Remove promptly to prevent wrinkles.

Ironing and Storage:

- Cool iron if needed.
- Do not dry clean.
- Store in a cool, dry place away from direct sunlight to preserve fabric integrity.

5. TROUBLESHOOTING

This section addresses common concerns you might encounter with your Elle Warm Up Scrubs Jacket.

Common Issues:

- **Fit Issues:** If the jacket does not fit as expected, please re-consult the size chart in Section 2 and compare your measurements. Consider if a different size would be more appropriate.
- **Wrinkling:** If the jacket appears wrinkled after washing, ensure it is removed promptly from the dryer. A cool iron can be used if necessary, following the care instructions in Section 4.
- **Fabric Pilling/Wear:** To minimize pilling and maintain fabric quality, always follow the recommended washing and drying instructions. Avoid abrasive surfaces that could cause friction.

6. SPECIFICATIONS

Detailed specifications for the Elle Women Warm Up Scrubs Jacket EL300.

Attribute	Detail
Model Number	EL300
Brand	ELLE
Material Composition	92% Polyester, 8% Spandex
Closure Type	Snap
Department	Womens
Manufacturer	SPI
Center Back Length	27 inches
Package Dimensions	36.1 x 27.1 x 3.9 cm; 275 g
Date First Available	23 September 2019

7. WARRANTY INFORMATION

Specific warranty details for the Elle Women Warm Up Scrubs Jacket EL300 are not provided in this manual. Generally, products are covered by a manufacturer's warranty against defects in materials and workmanship under

normal use. For detailed warranty terms and conditions, please refer to the product packaging or contact the manufacturer directly.

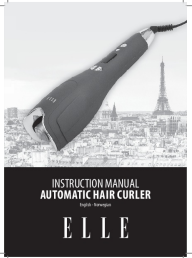
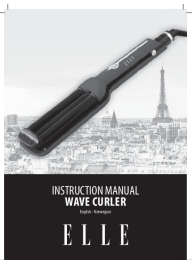


8. CUSTOMER SUPPORT

If you have any questions, concerns, or require assistance with your Elle Women Warm Up Scrubs Jacket EL300, please contact the retailer or the manufacturer, SPI, through their official customer service channels. Please have your product model number (EL300) and purchase information ready when contacting support.



© 2024 ELLE. All rights reserved. Information in this manual is subject to change without notice.

Related Documents - EL300

	<p>ELLE Automatic Hair Curler Instruction Manual - Safe Use and Features</p> <p>Comprehensive instruction manual for the ELLE Automatic Hair Curler. Learn about safety precautions, technical specifications, how to use, clean, and store your hair curler for optimal styling.</p>
	<p>ELLE Wave Curler Instruction Manual - Safety, Use, and Care Guide</p> <p>Comprehensive instruction manual for the ELLE Wave Curler (Model ERP928942422/92384). Includes essential safety precautions, operating instructions, technical specifications, cleaning, storage, warranty details, and EU Declaration of Conformity.</p>
	<p>ELLE Magical Hot Air Styler Instruction Manual</p> <p>Comprehensive instruction manual for the ELLE Magical Hot Air Styler (BM928941473), covering safety precautions, features, usage, cleaning, storage, and warranty information. Learn how to dry and style your hair effectively.</p>
	<p>Elle TENS 2: User Manual for Drug-Free Labor Pain Relief</p> <p>This user manual provides comprehensive instructions for the Elle TENS 2, a digital Transcutaneous Electrical Nerve Stimulation (TENS) unit designed for effective, drug-free pain relief during labor and for babycare applications. Learn about its features, operation, and safety guidelines.</p>



[ELLE Media Kit 2026: Advertising Opportunities in Canada](#)

This comprehensive media kit for ELLE Canada and ELLE Québec outlines advertising opportunities for 2026, detailing audience demographics, readership profiles, editorial calendars, advertising rates, digital offerings, and technical specifications.



[Kit Média ELLE 2026 : Opportunités Publicitaires au Canada et au Québec](#)

Ce kit média complet pour ELLE Canada et ELLE Québec en 2026 détaille les données démographiques de l'auditoire, la circulation, les calendriers éditoriaux, les tarifs publicitaires, les opportunités numériques et les exemples de partenariats pour le contenu mode et style de vie.