

Blow PRMX 4

BLOW PRMX 4-Channel USB Audio Mixer Instruction Manual

Model: PRMX 4

1. INTRODUCTION

Thank you for purchasing the BLOW PRMX 4-Channel USB Audio Mixer. This compact analog mixer is designed for versatile audio applications, including live stage performances, recording studios, and DJ setups. It offers a range of features such as a USB input for MP3 playback, an integrated echo effect, and multiple input/output options. This manual provides comprehensive instructions to help you set up, operate, and maintain your mixer for optimal performance.

2. PRODUCT OVERVIEW

The BLOW PRMX 4 is a low-noise, four-channel analog mixer housed in a durable metal casing. It features a user-friendly interface with essential controls for each channel and master output.

Key Features:

- Four-channel analog mixer
- USB input for MP3 file playback
- Integrated echo effect with repeat and delay options
- Jack socket for external effect processors
- Two XLR microphone inputs and two 6.3mm Jack/RCA inputs
- +48V Phantom power for condenser microphones and DI boxes
- 3-band equalization, AUX send, pan display, and FX effect on each channel
- Stereo line output (6.3mm Jack) and RCA output
- Headphone output with independent volume control
- INSERT slots on channels 1 and 2
- Robust metal casing

Component Identification:



Figure 2.1: Top view of the BLOW PRMX 4 mixer. This image displays the overall layout of the mixer, including all channels, controls, and the USB player section.

Refer to Figure 2.1 for a visual guide to the mixer's controls and connections. Each channel features GAIN, HIGH, MID, LOW (EQ), AUX, EFF, and PAN controls, along with a volume fader. The master section includes controls for DELAY, REP (Repeat), PHONES, AUX SEND, EFF SEND, and the MAIN output fader. The USB player section has a digital display and control buttons.



Figure 2.2: Close-up of the input and output connections. This image highlights the various ports for microphones, line inputs, main outputs, and auxiliary connections.

Figure 2.2 shows a detailed view of the input and output jacks. Channels 1 and 2 feature XLR microphone inputs and 6.3mm LINE inputs with INSERT points. Channels 3/4 offer 6.3mm LINE inputs and RCA inputs. The main output section includes REC (RCA), MAIN OUT (6.3mm Jack), AUX, and PHONES outputs.

3. SETUP

Follow these steps to set up your BLOW PRMX 4 mixer:

1. **Power Connection:** Ensure the mixer's power switch is in the OFF position. Connect the provided power cable to the mixer's power input and then to a suitable electrical outlet (240VAC / 50-60Hz).
2. **Microphone Connections:**
 - For dynamic microphones, connect them to the XLR inputs (MIC 1, MIC 2).
 - For condenser microphones, connect them to the XLR inputs and activate the +48V Phantom Power switch located in the master section. Ensure all channel gains are turned down before activating phantom power to prevent damage to equipment.
3. **Line Input Connections:**
 - Connect instruments or line-level devices (e.g., keyboards, CD players) to the 6.3mm LINE inputs on channels 1-4 or the RCA inputs on channels 3/4.
4. **Main Output Connection:** Connect your amplifier, powered speakers, or recording device to the MAIN OUT (6.3mm Jack) or REC (RCA) outputs.
5. **Headphone Connection:** Plug your headphones into the PHONES jack for monitoring.

6. **External Effects Processor (Optional):** If using an external effects unit, connect its input to the AUX SEND and its output to the FX RETURN (if available, or an unused line input).
7. **USB Device:** Insert a USB drive containing MP3 files into the USB port for playback.
8. **Power On:** Once all connections are secure, switch the mixer's power ON.

4. OPERATING INSTRUCTIONS

This section details the operation of the BLOW PRMX 4 mixer's various controls.

4.1 Channel Controls (Channels 1-4)

- **GAIN:** Adjusts the input sensitivity for the connected microphone or line source. Start with this control at its minimum and gradually increase until a healthy signal level is achieved without clipping (PEAK LED).
- **HIGH, MID, LOW (EQ):** These knobs control the treble, midrange, and bass frequencies for each channel. Use them to shape the tone of your audio source.
- **AUX:** Sends a portion of the channel's signal to the AUX output, typically used for monitor mixes or external effects.
- **EFF:** Sends a portion of the channel's signal to the internal echo effect or an external effects processor connected to the FX return.
- **PAN:** Adjusts the stereo position of the channel's signal, moving it between the left and right main outputs.
- **Channel Fader:** Controls the overall volume level of the individual channel sent to the main mix.
- **PEAK LED:** Illuminates when the input signal is too high, indicating potential clipping. Reduce the GAIN control if this LED lights up frequently.

4.2 Master Section Controls

- **+48V Phantom Power:** Activates phantom power for condenser microphones connected to XLR inputs.
- **DELAY:** Adjusts the delay time of the integrated echo effect.
- **REP (Repeat):** Controls the number of repetitions for the echo effect.
- **PHONES:** Adjusts the volume level for the headphone output.
- **AUX SEND:** Controls the overall level of the signal sent to the AUX output.
- **EFF SEND:** Controls the overall level of the signal sent to the internal echo effect or external effects.
- **MAIN Fader:** Controls the overall volume level of the stereo main output.
- **Level Meter:** Displays the output level of the main mix. Aim for levels that are strong but do not consistently peak into the red.

4.3 USB MP3 Player Operation

The integrated USB player allows you to play MP3 files directly from a USB flash drive.

- Insert a USB drive containing MP3 files into the USB port.
- Use the control buttons (Play/Pause, Next, Previous, Mode) to navigate and play tracks. The digital display will show track information.
- Adjust the volume of the USB player using its dedicated level control or by routing it through an available channel.

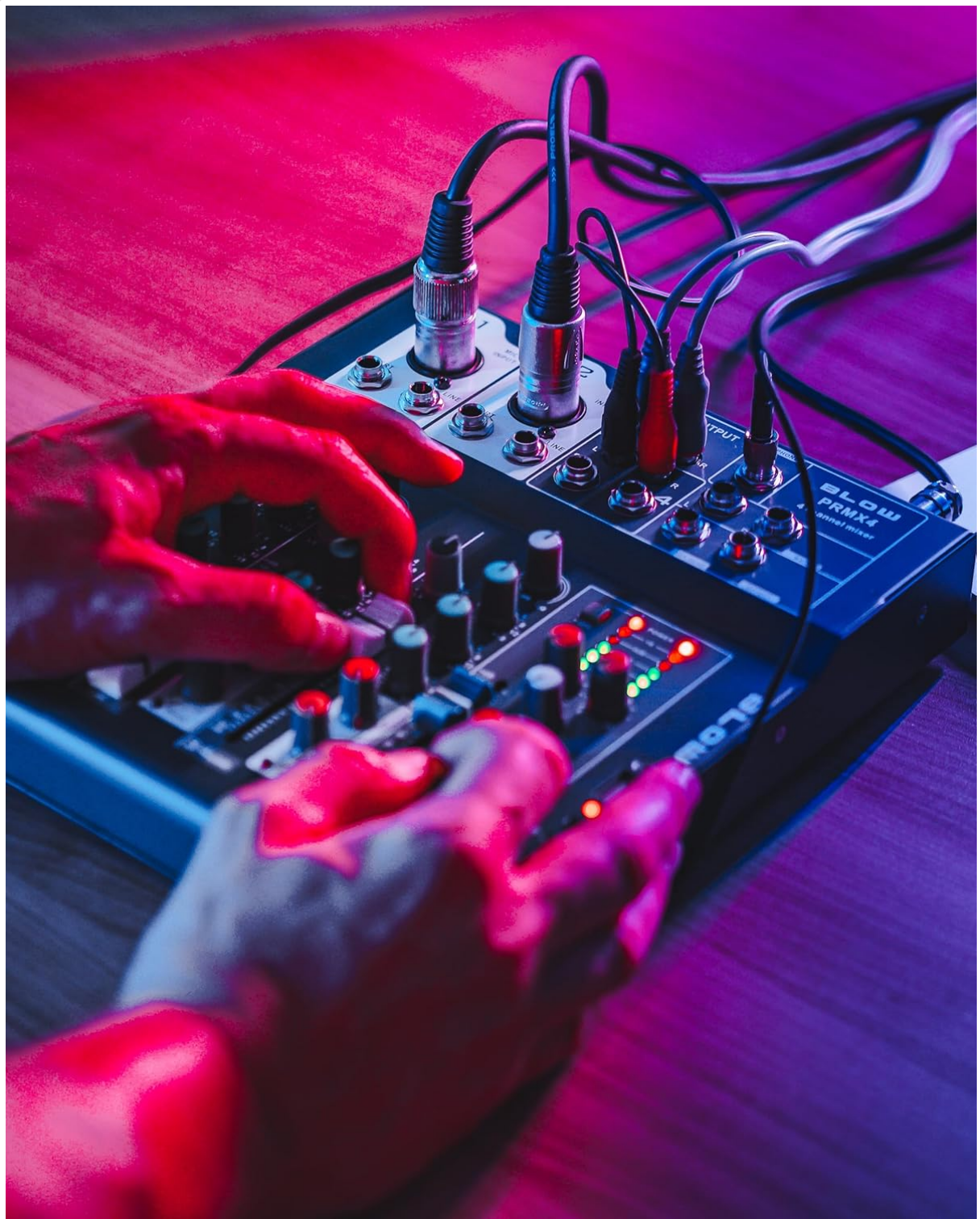


Figure 4.1: User interacting with the mixer controls. This image demonstrates a user adjusting the various knobs and faders on the mixer during operation.



Figure 4.2: Mixer with headphones for monitoring. This image shows the mixer connected to headphones, illustrating its use for private audio monitoring.

5. MAINTENANCE

Proper maintenance ensures the longevity and optimal performance of your mixer.

- **Cleaning:** Use a soft, dry cloth to clean the exterior of the mixer. For stubborn dirt, a slightly damp cloth can be used, followed by a dry cloth. Avoid abrasive cleaners or solvents.
- **Dust Protection:** Keep the mixer covered when not in use to prevent dust accumulation, especially on faders and knobs.
- **Storage:** Store the mixer in a cool, dry place away from direct sunlight and extreme temperatures.
- **Cable Management:** Ensure all cables are neatly organized and not under strain to prevent damage to connectors and ports.

6. TROUBLESHOOTING

If you encounter issues with your BLOW PRMX 4 mixer, refer to the following common problems and solutions:

Problem	Possible Cause	Solution
---------	----------------	----------

Problem	Possible Cause	Solution
No sound output	<ul style="list-style-type: none"> Power not connected or switched on. Main fader or channel faders are down. Incorrect input/output connections. Amplifier/speakers are off or muted. 	<ul style="list-style-type: none"> Check power connection and switch. Raise main and channel faders. Verify all audio cables are correctly connected. Ensure external audio equipment is powered on and unmuted.
Distorted sound	<ul style="list-style-type: none"> GAIN levels too high. Output levels too high. Damaged cables. 	<ul style="list-style-type: none"> Reduce GAIN on individual channels. Lower main fader or amplifier volume. Replace faulty cables.
Microphone not working	<ul style="list-style-type: none"> GAIN too low. Phantom power not activated for condenser mics. Faulty microphone or cable. 	<ul style="list-style-type: none"> Increase GAIN. Activate +48V Phantom Power. Test with a different microphone or cable.
USB player not working	<ul style="list-style-type: none"> USB drive not properly inserted. Unsupported file format (only MP3). Corrupted USB drive. 	<ul style="list-style-type: none"> Re-insert USB drive. Ensure files are in MP3 format. Try a different USB drive.

7. SPECIFICATIONS

Detailed technical specifications for the BLOW PRMX 4-Channel USB Audio Mixer:

- **Type:** Four-channel analog mixer
- **Frequency Response (Headphones):** 20Hz - 20kHz
- **Total Harmonic Distortion (THD):** <0.01%
- **Signal-to-Noise Ratio (SNR):** >110dB
- **Output Level:** +/- 1V
- **Line Input Sensitivity:** +/- 150mV
- **Microphone Input Sensitivity:** +/- 1.5mV
- **Power Requirements:** 240VAC / 50-60Hz
- **Dimensions (L x W x H):** 210 x 245 x 55 mm (8.27 x 9.65 x 2.17 inches)
- **Connectivity Technology:** Auxiliary, USB
- **Audio Input:** Jack 6.3mm, XLR, RCA
- **Housing:** Metal

8. WARRANTY AND SUPPORT



This product is manufactured by BLOW. For specific warranty information, please refer to the documentation provided at the time of purchase or contact your retailer. General support inquiries can be directed to the BLOW customer service channels.



Please note that specific details regarding warranty duration and terms are not available in this manual. Keep your proof of purchase for any warranty claims.



Figure 8.1: Product packaging for the BLOW PRMX 4 mixer. This image shows the retail box, which may contain additional warranty or support information.

Related Documents - PRMX 4

	<p>BLOW CityLIGHT Active Loudspeaker Bluetooth with Microphone User Manual</p> <p>User manual for the BLOW CityLIGHT active loudspeaker, detailing its features, controls, Bluetooth connectivity, TWS function, and specifications. Includes safety information and connection guides.</p>
<p>Instrukcja obsługi pilota BLOW do TV LG</p> 	<p>BLOW Remote Control User Manual for LG TVs</p> <p>Comprehensive user manual for the BLOW remote control designed for LG televisions, covering operation, button functions, and pairing instructions.</p>

 <p>BLOW Lokalizátor Bluetooth iTag Bluetooth locator iTag</p> <p>Instrukcja obsługi / User manual</p>	<p>BLOW iTag Bluetooth Locator User Manual and Features</p> <p>Comprehensive user manual for the BLOW iTag Bluetooth locator. Learn how to set up, use features like anti-lost, location tracking, photography, and battery replacement. Includes warranty and compliance information.</p>
 <p>HADEX Návod k obsluze T864B - Kamera BLOW WiFi H-492 2MP se solárním panelem, 78-813</p> <p>Obsah návodu: 1. Úvod 2. Instalace 3. Nastavení 4. Údržba 5. Troubleshooting</p>	<p>Návod k obsluze: Kamera BLOW WiFi H-492 2MP se solárním panelem (T864B)</p> <p>Kompletní návod k obsluze pro kameru BLOW WiFi H-492 2MP se solárním panelem (model T864B). Zjistěte, jak nainstalovat, nastavit a používat vaši novou bezpečnostní kameru.</p>
 <p>BT-18 2-IN-1 Wireless Audio Adapter User Guide</p>	<p>BT-18 2-IN-1 Wireless Audio Adapter User Guide</p> <p>User guide for the BT-18 2-IN-1 Wireless Audio Adapter, covering features, specifications, operation instructions, and troubleshooting for Bluetooth audio transmission and reception.</p>
 <p>HADEX Návod k obsluze T864C - Kamera BLOW WiFi 5MP H-425, 78-813</p> <p>Obsah návodu: 1. Úvod 2. Instalace 3. Nastavení 4. Údržba 5. Troubleshooting</p>	<p>T864C BLOW WiFi Camera 5MP H-425, 78-813 User Manual</p> <p>User manual for the T864C BLOW WiFi Camera 5MP (H-425, 78-813). Learn how to set up, connect, and use your camera with the V380 Pro app, including configuration, recording, and troubleshooting.</p>