

CLY TSFA0042

CLY LED Security Light with Motion Sensor and Remote Control

MODEL: TSFA0042

Introduction

This manual provides detailed instructions for the installation, operation, and maintenance of your CLY LED Security Light with Motion Sensor and Remote Control. This 42W, 3600LM outdoor floodlight features three adjustable heads, a 5000K daylight white output, IP66 waterproof rating, and multiple operating modes controlled by a remote. Please read this manual thoroughly before installation and use to ensure proper function and safety.



Image: The CLY LED Security Light, featuring three adjustable light heads and a motion sensor, shown alongside its remote control.

Safety Information

- Ensure the power supply is disconnected before installation, maintenance, or cleaning.

- Installation should be performed by a qualified electrician or a person with sufficient knowledge of electrical systems.
- Do not attempt to modify or disassemble the product. This will void the warranty and may cause electrical hazards.
- Ensure the mounting surface is stable and can support the weight of the fixture.
- Keep the product away from flammable materials.
- The PIR sensor may be affected by working surroundings such as heat sources or strong winds. Install in a location protected from direct rain, such as under an eave, to prevent water intrusion into the sensor.

Package Contents

Verify that all components are present before beginning installation:

- 1 x CLY LED Security Light
- 1 x Remote Control (with 1 Lithium Polymer battery included)
- 1 x Instruction Manual
- Mounting Hardware (screws, wall anchors, wire nuts)

Product Overview

The CLY LED Security Light features a robust design with three independently adjustable light heads and an integrated motion sensor. The included remote control allows for convenient adjustment of settings without needing to access the fixture directly.

Remote Control Security Light

Detection Range: 180°

Maximum detection distance: 12M/39ft

Beam angle: 270°

Ideal mounting height:
4-6M/13.12ft-19.69ft

Optimum light range: >10*10m²

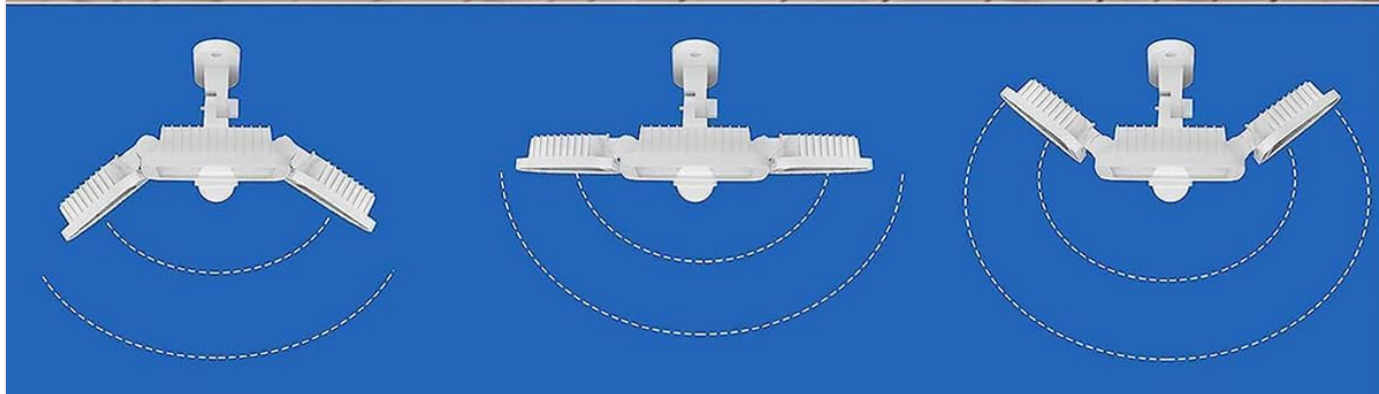


Image: A diagram illustrating the adjustable light heads, showing a 270° beam angle and 180° detection range. It also indicates an ideal mounting height of 4-6 meters (13.12-19.69 feet) and an optimum light range of over 10x10 square meters.

Adjustable Light Heads: The two smaller side heads can be rotated 180° horizontally (left and right) and 90° vertically (up and down). The main central head and the motion sensor can be rotated 180° vertically (up and down). This flexibility allows for precise illumination and coverage.

Specifications

Feature	Specification
Model Name	TSFA0042
Wattage	42W
Brightness	3600 Lumens
Color Temperature	5000K (Daylight White)
Water Resistance Level	IP66 Waterproof
Beam Angle	270°
Sensing Angle	180°
Detection Distance	6M (19.68ft) - 12M (39.37ft) adjustable
Lighting Duration (Motion Mode)	45s / 90s / 120s / 5mins / 10mins adjustable
Brightness Adjustment	10% - 100% adjustable
Power Source	Corded Electric (120V AC)
Material	Aluminum, Plastic
Product Dimensions	6.7"L x 5.2"W x 5.7"H
Item Weight	1.72 pounds
Installation Type	Surface Mounted (Ceiling or Wall)
Included Components	Security Light, Remote Control, Instruction Manual

Installation

Follow these steps for proper installation. Ensure power is OFF at the circuit breaker before starting.

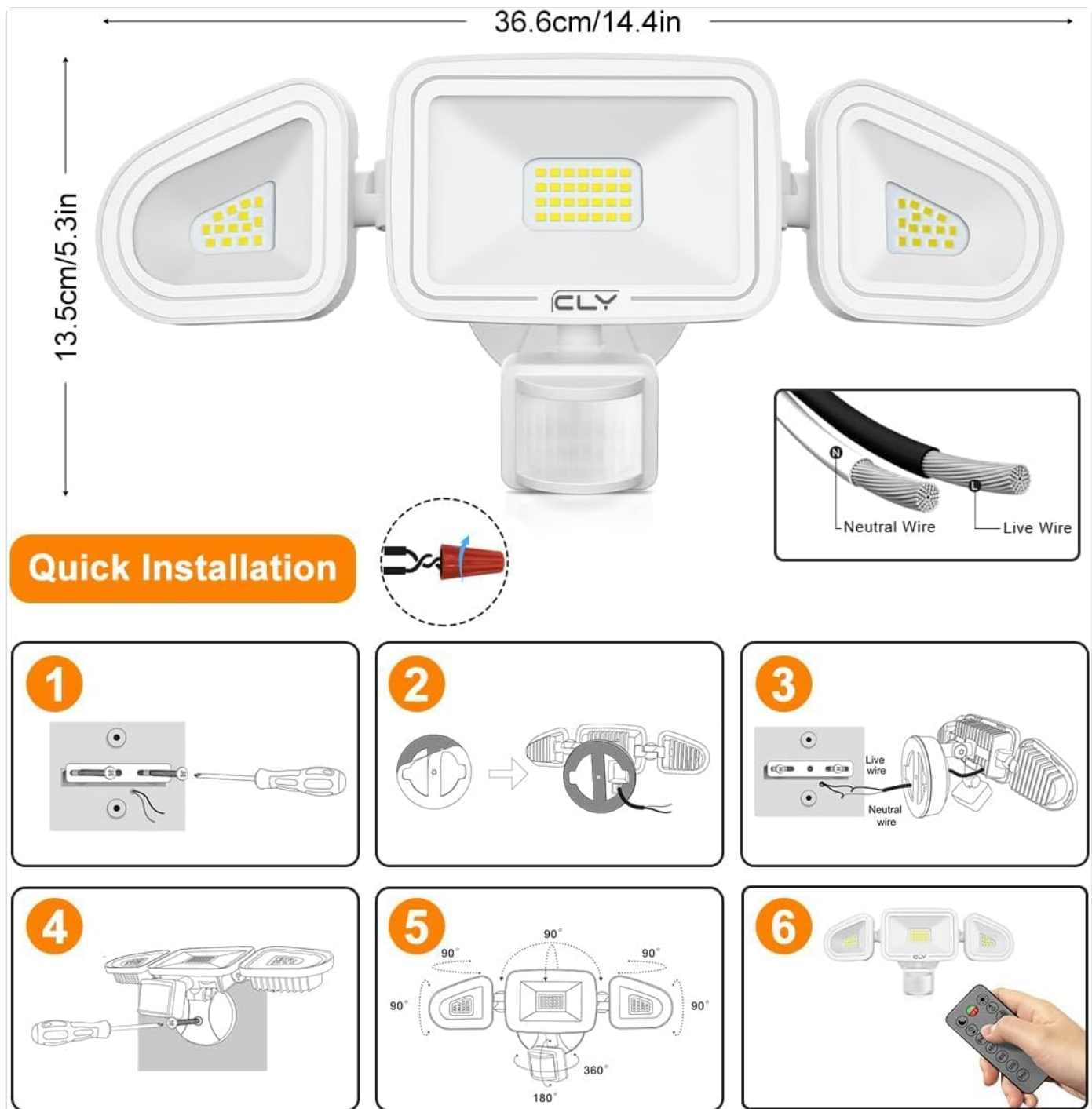


Image: A visual guide depicting six steps for quick installation, including mounting the bracket, attaching the fixture, wiring, securing the light, adjusting heads, and using the remote.

1. **Prepare Mounting Surface:** Choose a suitable location for installation (wall or ceiling) at an ideal height of 5-7 meters (19.69-26.25 feet). Mark the drilling points for the mounting bracket.
2. **Install Mounting Bracket:** Drill holes and secure the mounting bracket to the surface using the provided screws and wall anchors.
3. **Wire Connection:** Connect the light's wires to your household electrical wiring. Typically, connect the Live wire (black) to Live, Neutral wire (white) to Neutral, and Ground wire (green/bare copper) to Ground. Use wire nuts to secure connections. Ensure all connections are tight and insulated.
4. **Attach Light Fixture:** Secure the light fixture to the installed mounting bracket.
5. **Adjust Light Heads and Sensor:** Loosen the screws on the light heads and motion sensor to adjust their angles. The side heads can rotate 180° horizontally and 90° vertically. The main head and sensor can rotate 180° vertically. Tighten screws once desired angles are set.
6. **Restore Power:** Turn on the power at the circuit breaker. The light is now ready for operation.

Operating Instructions

The CLY LED Security Light is operated using the included remote control. Ensure the remote's battery is installed correctly.

Remote Control Functions



Image: A detailed diagram of the remote control, showing buttons for ON/OFF, 24-hour detection, night detection, brightness adjustment, detection distance adjustment, lighting duration, and timing function.

- **ON/OFF (Red Button):** Toggles the light on or off. When in constant light mode, press this to turn off. To switch from constant light mode to sensor mode, press OFF, then select the desired sensor mode.
- **24 Hours Detection Mode (Sun Icon):** Activates motion detection during both day and night.
- **Night Detection Mode (Moon Icon):** Activates motion detection only when it is dark.
- **Brightness +/- (Light Bulb Icons):** Adjusts the light brightness from 10% to 100%.
- **Detection Distance +/- (Wave Icons):** Adjusts the motion sensor's detection distance to 50%, 80%, or 100% (approx).

6M, 9M, 12M).

- **Lighting Duration (45S, 90S, 120S, 5min, 10min):** Sets how long the light stays on after motion is detected in sensor modes.
- **Timing Function (1H, 2H, 3H):** Sets the light to stay on continuously for 1, 2, or 3 hours, after which it automatically switches to sensor mode.

Working Modes

4 Working Modes



Mode 1

PIR Work for 24H

The light automatically will turn on whenever motion is detected, day or night.



Mode 2

PIR Only Work at Night

The light will only turn on automatically when motion is detected at night.



Mode 3

Always ON

The light will stay on



Mode 4

Timing

The light will turn on for 1H/2H/3H, day or night.



Image: A grid showing the four distinct working modes of the security light: Mode 1 (PIR 24H), Mode 2 (PIR Night Only), Mode 3 (Always On), Mode 4 (Timing).

On), and Mode 4 (Timing 1H/2H/3H).

1. **Mode 1: 24 Hours Detection Mode (PIR Work for 24H)**

The light will automatically turn on whenever motion is detected, regardless of whether it is day or night. The light duration and detection distance can be adjusted via the remote.

2. **Mode 2: Night Detection Mode (PIR Only Work at Night)**

The light will only turn on automatically when motion is detected at night or in low-light conditions. The light duration and detection distance can be adjusted via the remote.

3. **Mode 3: Constant On Mode (Always On)**

The light will stay on continuously until manually turned off or switched to another mode. This mode provides maximum illumination for extended periods.

4. **Mode 4: Timing Function (1H/2H/3H)**

The light will remain on for a set duration (1, 2, or 3 hours) and then automatically switch to the previously selected sensor mode (Mode 1 or Mode 2).

Adjusting Sensing Settings

Sensing Setting

5 Lighting Time Settings For Mode 1 and 2

45S

90S

120S

5min

10min

Brightness
Adjustment
for All Modes



3 Detection Distance For Mode 1 and 2

100%

80%

50%



Image: A visual representation of the adjustable settings, including five lighting time options (45s to 10min), three detection distance levels (50% to 100%), and a brightness adjustment range.

- **Lighting Duration:** In Mode 1 and Mode 2, use the 45S, 90S, 120S, 5min, or 10min buttons on the remote to set how long the light remains active after motion ceases.
- **Detection Distance:** In Mode 1 and Mode 2, use the 50%, 80%, or 100% buttons to adjust the sensor's range. 100% corresponds to approximately 12 meters (39.37 feet).
- **Brightness:** In all modes, use the Brightness +/- buttons to set the desired light intensity from 10% to 100%.

Maintenance

- **Cleaning:** Periodically clean the light fixture and motion sensor lens with a soft, damp cloth. Do not use abrasive cleaners or solvents. Ensure power is off before cleaning.
- **Inspection:** Regularly check the mounting hardware and electrical connections for any signs of wear, damage, or looseness.
- **Weather Resistance:** The light is IP66 rated for water resistance. However, ensure the sensor is not directly exposed to heavy rain if possible, as prolonged direct exposure can affect its performance.



IP66 Waterproof



Heat Resistance



Frost Resistance

Image: The CLY LED Security Light installed on a building during a rainstorm, illustrating its IP66 waterproof rating, heat resistance, and frost resistance for reliable outdoor performance.

Troubleshooting

Problem	Possible Cause	Solution
Light does not turn on.	No power; incorrect wiring; sensor blocked; remote battery dead.	Check circuit breaker. Verify wiring connections. Clear any obstructions from sensor. Replace remote battery.
Light stays on continuously.	Constant On mode activated; continuous motion detected; sensor malfunction.	Switch to a motion sensor mode (Mode 1 or 2). Ensure no constant motion in sensor's field of view. Contact support if issue persists.
Motion sensor not detecting.	Incorrect mode selected; detection distance too low; sensor obstructed; environmental interference.	Ensure Mode 1 or 2 is active. Increase detection distance. Clear sensor lens. Avoid installing near heat vents or moving objects.
Remote control not working.	Remote battery dead; remote out of range; signal obstruction.	Replace remote battery. Ensure remote is pointed at the light and within range. Remove any obstructions between remote and light.

Warranty and Support

This CLY LED Security Light comes with a **2-year replacement service warranty** from the date of purchase.

For any questions, technical assistance, or warranty claims, please refer to the service email address provided in your physical instruction manual. You may also contact CLY customer service through Amazon, and a representative will respond within 24 hours.

Application Scenarios

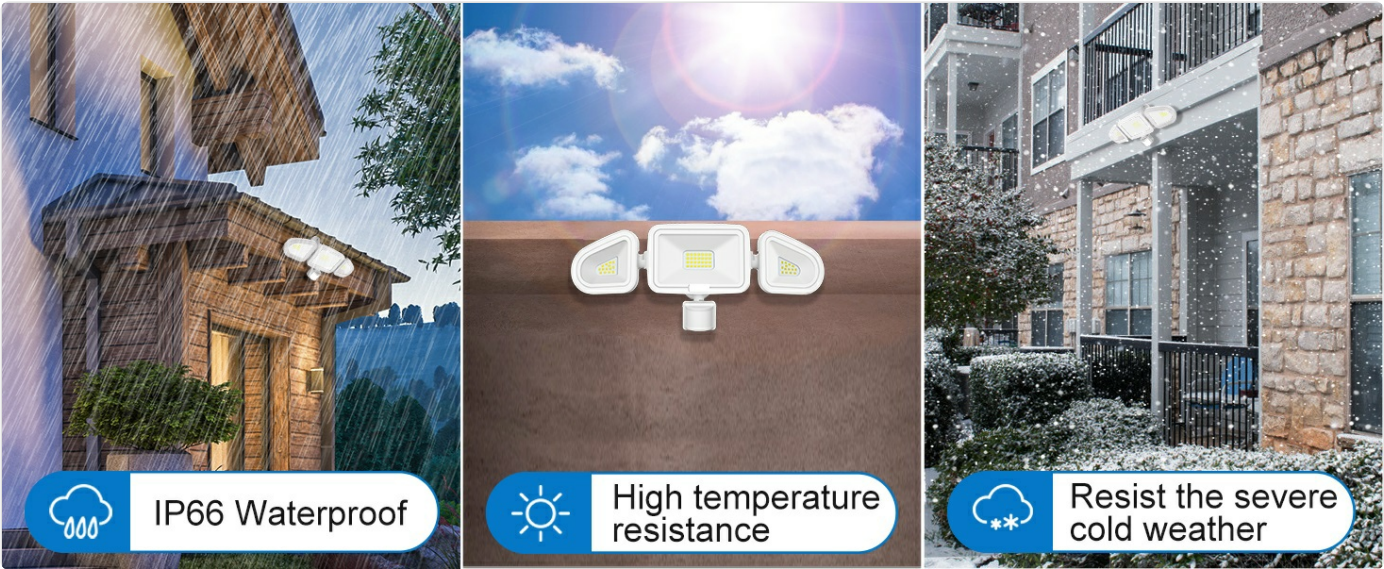



Image: A collage of images showcasing the CLY LED Security Light installed in various settings, including garages, driveways, patios, and poolside areas, highlighting its versatility for both outdoor and indoor use.

The CLY LED Security Light is suitable for a wide range of applications, including:

- Garages and workshops
- Driveways and parking lots
- Yards, gardens, and patios
- Front doors, porches, and eaves
- Storage rooms and sheds
- Commercial and residential outdoor areas

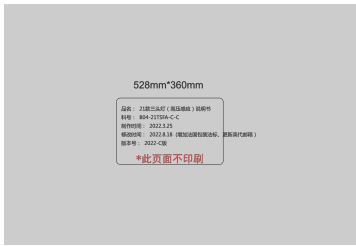
Related Documents - TSFA0042



[MEIKEE Motion Sensor Lights with 3 Adjustable Heads Installation and Specifications](#)

Comprehensive guide for MEIKEE Motion Sensor Lights with 3 Adjustable Heads, covering installation, component diagrams, sensor settings, and technical specifications. Learn how to properly install and adjust your motion sensor lights for optimal performance.

Documents - CLY – TSFA0042



[\[pdf\]](#) User Manual

B04 21TSFA C CC TSFA0042 42W Color Temperature 3000K 3600LM 5 CLY entschieden haben Um ein perfektes Erlebnis zu gewährleisten befolgen B1p3AtUsD0L ref dp product quick view m media amazon images I |||

...

lang: **score:12** filesize: 2.78 M page_count: 3 document date: 2023-10-20