

advwin 12L

advwin 12L Mini Skincare Fridge with LED Mirror - User Manual

Model: 12L

1. IMPORTANT SAFETY INSTRUCTIONS

Please read all instructions carefully before using this appliance. Keep this manual for future reference.

- Ensure the voltage matches the power supply before connecting.
- Do not immerse the appliance in water or other liquids.
- Unplug the appliance from the power outlet when not in use or before cleaning.
- Do not block the ventilation openings.
- Keep the appliance away from direct sunlight and heat sources.
- This appliance is not intended for use by persons (including children) with reduced physical, sensory or mental capabilities, or lack of experience and knowledge, unless they have been given supervision or instruction concerning use of the appliance by a person responsible for their safety.

2. PACKAGE CONTENTS

Verify that all items are included in your package:

- advwin 12L Mini Skincare Fridge (x1)
- AC Power Cord (x1)
- DC Power Cord (x1)
- Instruction Manual (x1)

3. PRODUCT FEATURES

- **Dual Functionality:** Capable of both cooling and warming contents.
- **12-Liter Capacity:** Spacious interior, can hold up to 12 standard 350ml beverage cans.

- **Dimmable LED Mirror:** Integrated touch-screen LED mirror with three adjustable brightness levels for various lighting needs.
- **Portable Design:** Lightweight and compact, suitable for use in bedrooms, offices, dorms, and cars.
- **Quiet Operation:** Equipped with a brushless fan motor, operating at approximately 25dB.
- **Adjustable Shelves:** Removable internal shelves for flexible storage organization.
- **Dual Power Supply:** Includes both AC (110V) and DC (12V) power cords for home and vehicle use.

4. PRODUCT OVERVIEW

Familiarize yourself with the components of your advwin mini fridge.



This image displays the back panel of the advwin mini fridge, detailing the control switch for hot/cold modes, the AC and DC power input ports, and the ventilation areas for heat dissipation and cooling.

- **Portable Handle:** Located on top for easy transport.
- **LED Light Mirror:** Integrated into the door, with touch control for brightness.
- **Internal Shelves:** Two removable shelves for customizable storage.
- **Cooling/Heating Switch:** Located on the back panel to select mode.
- **AC/DC Power Ports:** Located on the back panel for power connection.
- **Ventilation:** Heat dissipation vents and cooling ventilation on the sides and back.

5. INSTALLATION AND SETUP

5.1 Placement

Place the mini fridge on a flat, stable surface. Ensure there is adequate space (at least 4 inches) around the unit for proper ventilation, especially around the back and side vents.



This image illustrates the versatile placement options for the advwin mini fridge, suitable for use in bedrooms, offices, dormitories, and cars.

5.2 Power Connection

Your advwin mini fridge can be powered by either AC (home) or DC (car) power.

- **For Home Use (AC 110V):** Connect the AC power cord to the AC port on the back of the fridge, then plug the other end into a standard 110V wall outlet.

- **For Car Use (DC 12V):** Connect the DC power cord to the DC port on the back of the fridge, then plug the other end into your vehicle's 12V cigarette lighter socket.

Important: Do not connect both AC and DC power cords simultaneously.



This image illustrates the versatile power options of the advwin mini fridge, showing its use with a standard AC 110V power outlet for home environments and a DC 12V car adapter for portable use in vehicles.

6. OPERATION

6.1 Cooling and Warming Modes

The advwin mini fridge offers both cooling and warming functions. The mode is selected using the switch on the back panel.

- **Cooling Mode:** Flip the switch to the 'COLD' position. The internal temperature can reach approximately 39.2°F (4°C), which is about 39.6°F (22°C) below ambient temperature.
- **Warming Mode:** Flip the switch to the 'HOT' position. The internal temperature can reach approximately 149°F (65°C).

Note: Allow 30 minutes for the unit to reach its desired temperature after switching modes.

ELECTRIC COOLER & WARMER

39.2° (4°C)

149°F (65°C)

At 78.8°F (26°C) ambient temperature



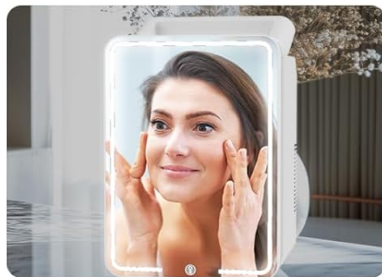
This visual illustrates the dual functionality of the adwin mini fridge, capable of cooling contents to approximately 39.2°F (4°C) and warming them up to 149°F (65°C), suitable for diverse storage needs.

6.2 LED Light Mirror

The integrated LED mirror on the door features adjustable brightness.

- **To Turn On/Off:** Lightly touch the power icon on the mirror surface.
- **To Adjust Brightness:** Continue to touch the power icon to cycle through three brightness levels (low, medium, high).

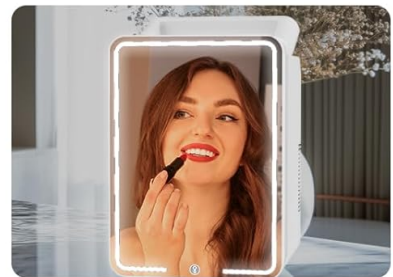
3 LEVEL ADJUSTABLE BRIGHTNESS FOR MAKEUP



Low Light
Daily Use



Medium Light
Skincare Use



High Light
Makeup Time

This series of images demonstrates the three adjustable brightness levels of the integrated LED mirror on the advwin mini fridge, suitable for various tasks such as daily routines, skincare application, and detailed makeup.

6.3 Internal Organization

The fridge includes two removable shelves to customize storage space.

- To remove a shelf, gently slide it out of its supports.
- To reinsert, align the shelf with the desired supports and slide it into place.

This image shows the interior of the advwin mini fridge, emphasizing the removable shelf feature that allows users to customize the storage space for items of various sizes.

7. MAINTENANCE

7.1 Cleaning

- Always unplug the unit before cleaning.
- Wipe the interior and exterior surfaces with a soft, damp cloth and mild detergent.
- Do not use abrasive cleaners or solvents.
- Ensure the unit is completely dry before plugging it back in.

7.2 Defrosting

This appliance features manual defrost. Frost may accumulate on the interior cooling plate, especially in humid conditions.

- If frost buildup is excessive, unplug the unit and allow the frost to melt naturally.
- Wipe away any melted water with a clean cloth.
- Do not use sharp objects to remove frost, as this can damage the cooling system.

8. TROUBLESHOOTING

Problem	Possible Cause	Solution
Unit not powering on	No power supply; loose connection; faulty outlet/cord.	Check power cord connection; try a different outlet; ensure power switch is on.
Not cooling/warming effectively	Incorrect mode selected; blocked ventilation; excessive contents; ambient temperature too high/low.	Verify 'COLD' or 'HOT' mode is selected; ensure vents are clear; do not overfill; allow time for temperature stabilization.
LED mirror not lighting up	Power issue; faulty LED component.	Ensure the fridge is powered on; gently touch the power icon on the mirror. If issue persists, contact customer support.
Excessive noise	Unit not level; fan obstruction.	Ensure the unit is on a flat, stable surface; check for any obstructions near the fan.
Water accumulation inside	Condensation; frost melting.	This is normal for thermoelectric units. Wipe away water with a cloth. See defrosting instructions.

9. SPECIFICATIONS

Specification	Detail
Brand	advwin
Model	12L
Capacity	12 Liters
Product Dimensions (L x W x H)	9.65 x 9.84 x 12.59 inches
Item Weight	8.18 pounds
Voltage	AC 110V, DC 12V
Annual Energy Consumption	48 Watts
Cooling Temperature	Approx. 39.2°F (4°C) / 39.6°F (22°C) below ambient
Warming Temperature	Approx. 149°F (65°C)
Noise Level	25dB

Specification	Detail
Defrost Type	Manual
Number of Shelves	3 (2 removable)
Door Material	Glass

10. WARRANTY AND CUSTOMER SUPPORT

For warranty information or technical assistance, please refer to the warranty card included with your product or contact advwin customer support through the retailer where the product was purchased. Please have your model number (12L) and purchase date available when contacting support.