

Manuals+

[Q & A](#) | [Deep Search](#) | [Upload](#)

[manuals.plus](#) /

- › [Abizarch](#) /
- › [Abizarch Cutting Machine Edge Guide Positioner Instruction Manual](#)

Abizarch 20BR00w848c3905490Bm1

Abizarch Cutting Machine Edge Guide Positioner Instruction Manual

Model: 20BR00w848c3905490Bm1

Brand: Abizarch

INTRODUCTION

This manual provides detailed instructions for the safe and effective use of your Abizarch Cutting Machine Edge Guide Positioner. Designed for woodworking enthusiasts and professionals, this tool assists in achieving precise and repeatable cuts with various cutting machines, including circular saws, trimmers, and jigsaws.

Key Features:

- **Dual Rail System:** Ensures consistent and precise cuts by keeping your cutting machine on track.
- **Versatile Compatibility:** Compatible with most 4-inch/5-inch cutting machines, trimmers, circular saws, and jigsaws.
- **Lightweight Stainless Steel Frame:** Provides stability and longevity for reliable performance.
- **Convenient Measuring Scale:** Features a clear, easy-to-read scale for accurate measurements without additional tools.
- **Adjustable Fence:** Includes micro-adjustment for setting desired widths, ensuring precise and repeatable cuts.

PARTS LIST

The Abizarch Cutting Machine Edge Guide Positioner includes the following components:

- 1 x Cutting Machine Edge Guide Positioner (main assembly)
- Necessary fasteners (screws, nuts) for assembly
- Adjustable components for the dual rail system and fence
- Integrated measuring scales
- Handle with integrated bubble level

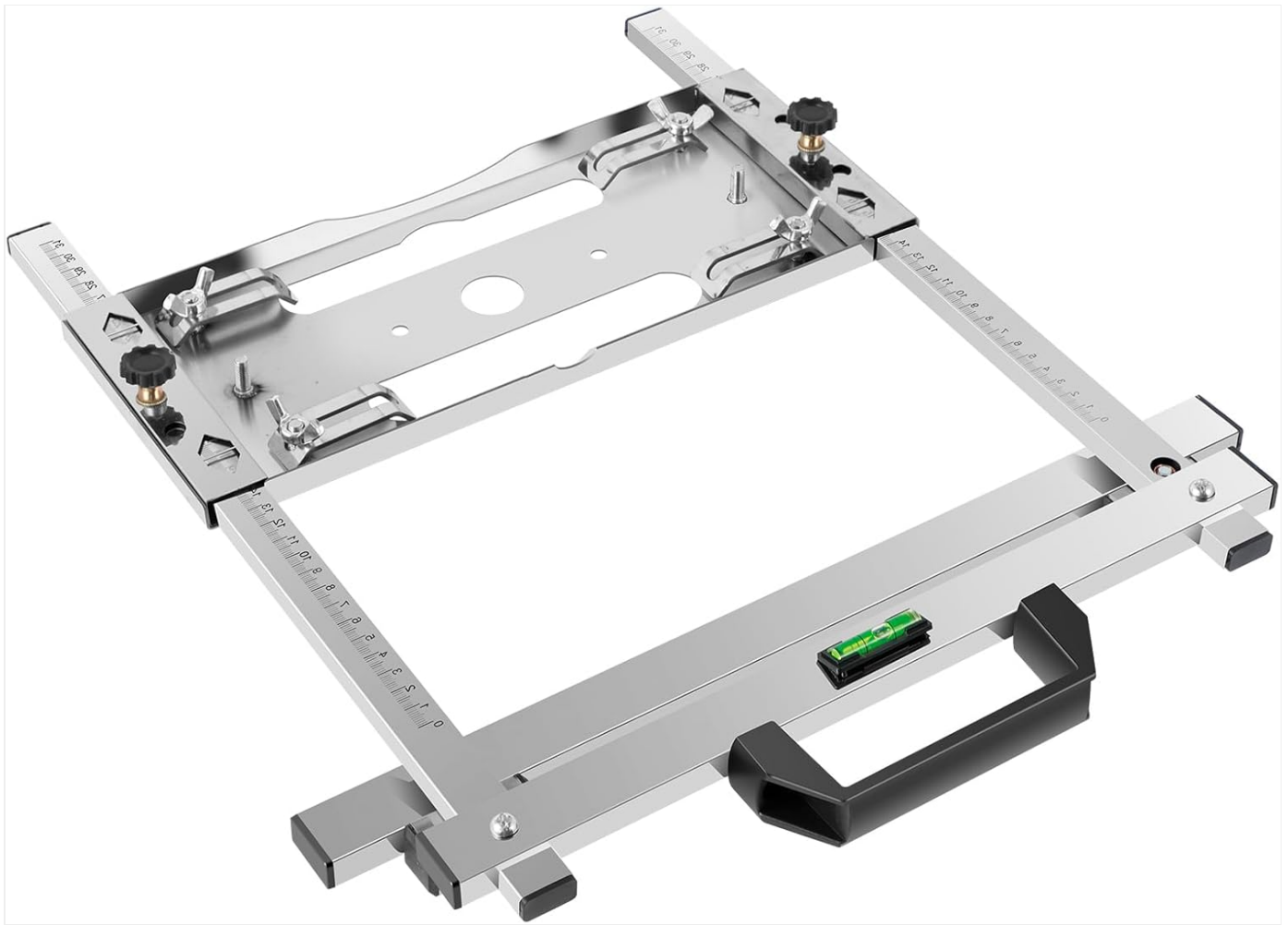


Image: All components of the Abizarch Cutting Machine Edge Guide Positioner laid out before assembly.

SETUP AND ASSEMBLY

Follow these steps to assemble your edge guide positioner:

1. **Attach the Rails:** Connect the two main rail sections to the central plate using the provided fasteners. Ensure they are securely tightened but allow for adjustment.
2. **Install the Handle:** Secure the handle, which includes the bubble level, to the designated side of the guide.
3. **Adjust the Fence:** Position the adjustable fence components onto the rails. These will be used to set your desired cutting width.
4. **Verify Stability:** Once assembled, ensure all parts are firmly connected and the guide is stable.

Your browser does not support the video tag.

Video: This video demonstrates the step-by-step assembly process of the Abizarch Cutting Machine Edge Guide Positioner, showing how to connect the rails, attach the handle, and secure the adjustable fence components.



Image: The fully assembled Abizarch Cutting Machine Edge Guide Positioner, ready for use.

OPERATING INSTRUCTIONS

The edge guide positioner is designed to provide stable and accurate cuts. Follow these guidelines for optimal performance:

1. **Prepare Your Workpiece:** Ensure your material is securely clamped and stable on a flat surface.
2. **Attach the Cutting Machine:** Secure your circular saw, trimmer, or jigsaw to the central plate of the guide positioner. Ensure it is firmly attached and aligned.
3. **Set the Cutting Width:** Use the adjustable fence and the integrated measuring scales to set your desired cutting width. Tighten the adjustment knobs to lock the fence in place. The clear double scale markings on both sides facilitate precise measurement.
4. **Position the Guide:** Place the edge guide positioner on your workpiece, aligning the guide rails with the desired cutting line. The dual rail system helps maintain a straight path.

5. **Check Level:** Utilize the integrated bubble level on the handle to ensure the guide is horizontally level for accurate cuts.
6. **Perform the Cut:** With the cutting machine securely attached and the guide positioned, proceed with your cut, maintaining steady pressure and movement along the guide rails.



Image: The edge guide positioner attached to a circular saw, demonstrating its use for straight cuts on a wooden board.

Product Size

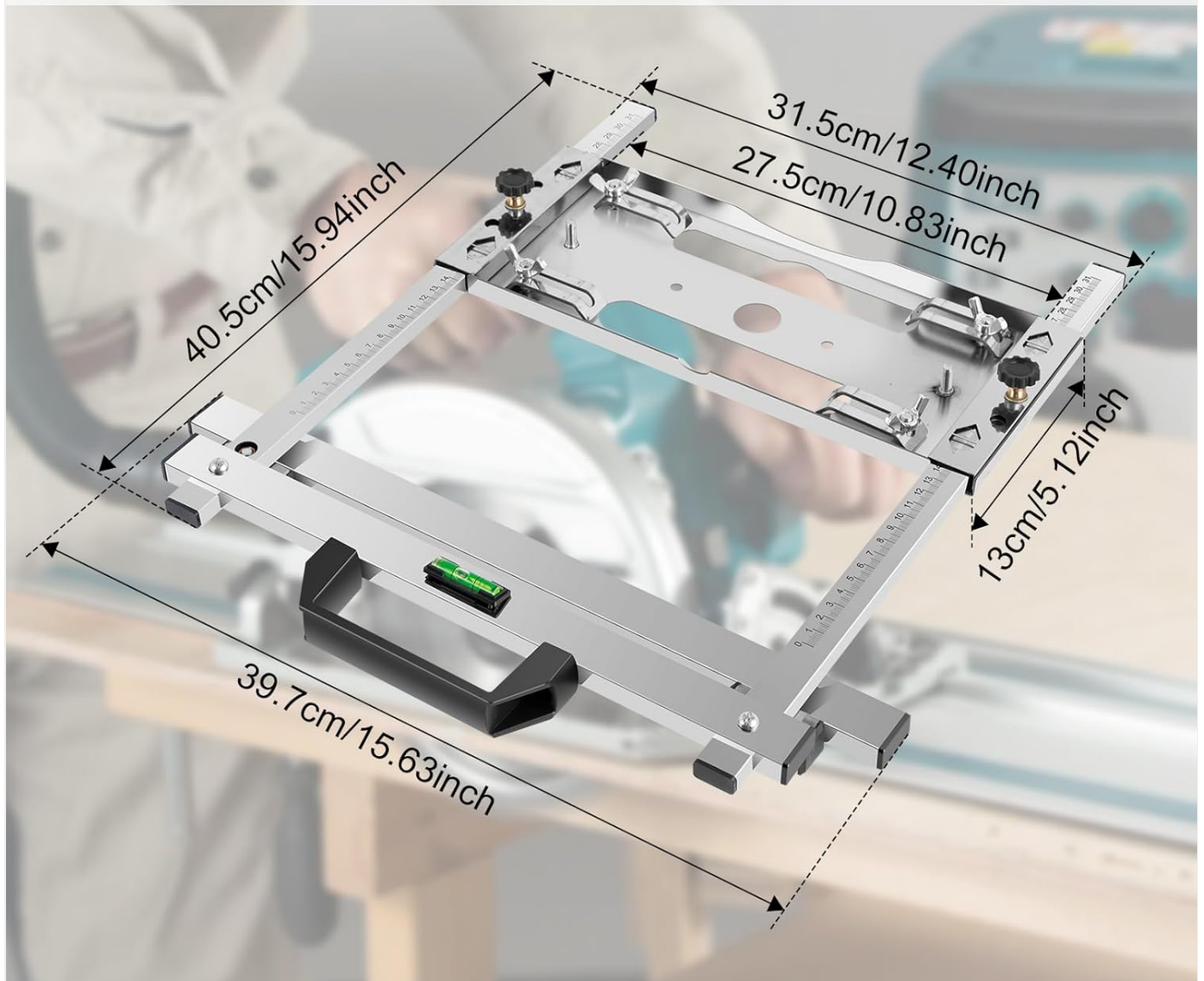


Image: A person operating a circular saw with the Abizarch Edge Guide Positioner, ensuring a straight and precise cut.



**Clear double scale:
Precise scale markings on both sides,
facilitating measurement and ensuring accuracy.**

Image: A close-up view highlighting the clear double scale markings on the edge guide positioner, which aid in precise measurement and setting of cutting dimensions.

MAINTENANCE

Proper maintenance ensures the longevity and accuracy of your edge guide positioner:

- **Cleaning:** After each use, wipe down the stainless steel frame with a clean, dry cloth to remove sawdust and debris. For stubborn residue, a damp cloth can be used, followed by thorough drying.
- **Inspection:** Regularly inspect all fasteners and adjustable components for tightness. Tighten any loose screws or nuts to maintain stability and accuracy.
- **Storage:** Store the edge guide positioner in a dry environment to prevent corrosion.

TROUBLESHOOTING

If you encounter issues with your edge guide positioner, consider the following:

- **Inaccurate Cuts:**
 - Ensure all fasteners are securely tightened.
 - Verify that the cutting machine is properly attached and aligned with the guide.
 - Check the bubble level to confirm the guide is horizontally level on the workpiece.
 - Confirm the adjustable fence is locked at the correct measurement.
- **Difficulty Attaching Cutting Machine:**
 - Ensure your cutting machine is compatible with the guide (suitable for 4-inch/5-inch cutting machines, trimmers, circular saws, jigsaws).
 - Adjust the mounting points on the central plate to fit your specific tool.
- **Guide Not Moving Smoothly:**
 - Clean the guide rails and ensure no debris is obstructing movement.
 - Check for any bent or damaged components.

SPECIFICATIONS

Brand	Abizarch
Model Number	20BR00w848c3905490Bm1
Material	Stainless Steel
Color	Silver
Product Dimensions	16.54 x 5.71 x 2.36 inches (40.5 x 39.7 cm as shown in images)
Item Weight	2.62 pounds
Compatible Machines	4-inch/5-inch cutting machines, trimmers, circular saws, jigsaws

The horizontal bubble design of the fuselage has a more precise angle, more convenient horizontal adjustment, and more accurate cutting.



Image: A detailed diagram illustrating the dimensions of the Abizarch Cutting Machine Edge Guide Positioner.

WARRANTY AND SUPPORT

For warranty information or technical support regarding your Abizarch Cutting Machine Edge Guide Positioner, please refer to the product packaging or contact the manufacturer directly. Keep your purchase receipt for any warranty claims.



© 2025 Abizarch. All rights reserved.

Documents - Abizarch – 20BR00w848c3905490Bm1
no relevant documents