

Junsun Android 13 Car Radio Stereo for Toyota Tacoma 2016-2021

Junsun Car Radio Stereo User Manual

For Toyota Tacoma (2016-2021) - Android 13 with CarPlay & Android Auto

INTRODUCTION

This manual provides detailed instructions for the installation, operation, and maintenance of your Junsun Car Radio Stereo. This unit is specifically designed for Toyota Tacoma 3rd Generation models from 2016 to 2021, offering an enhanced in-car entertainment and navigation experience with its Android 13 operating system, wireless CarPlay, and Android Auto capabilities.

PRODUCT FEATURES

- **Vehicle Compatibility:** Designed for Toyota Tacoma 2016, 2017, 2018, 2019, 2020, and 2021 (3rd Gen Tacoma).
- **Android 13 Operating System:** Ensures smooth and responsive operation for a comfortable user experience.
- **Wireless CarPlay & Android Auto:** Supports both wired and wireless connections to your iPhone or Android phone, providing access to contacts, notifications, messages, map navigation, and music.
- **GPS Navigation & WiFi Connectivity:** Features built-in offline North American maps and supports online maps when connected to WiFi. Allows installation and deletion of Android applications from the Application Store.
- **Bluetooth Functionality:** Enables hands-free calling and wireless audio streaming from your favorite music services. Includes a built-in microphone for clear communication.
- **Steering Wheel Control Integration:** Allows adjustment of volume and toggling between radio stations directly from your steering wheel buttons, enhancing driving safety and convenience.
- **High-Definition Display:** A 1280*720 resolution screen delivers clear image quality for navigation, entertainment, and rearview camera display.
- **FM/AM Radio:** Equipped with digital display for precise tuning, providing access to news, music, and weather broadcasts.
- **Advanced Digital Sound Processor (DSP):** Customize sound effects and enjoy various music styles with adjustable delay, balance, equalizer, and filter settings.

WHAT'S IN THE BOX

The package includes the following components:



All included components
for the Junsun Car Radio
Stereo.

- Car Radio Unit (10-inch display)
- Microphone
- GPS Module
- USB Cables (x2)
- RCA Cable
- Can Bus Decoder
- Power Cables (x2)
- Reversing Line
- Factory USB Cable
- Screwdriver
- Crowbar (Pry Tool)
- Original USB Adapter

SETUP AND INSTALLATION

Installation of the Junsun Car Radio Stereo involves replacing your vehicle's existing head unit. It is recommended to consult a professional for installation if you are unfamiliar with car audio systems.

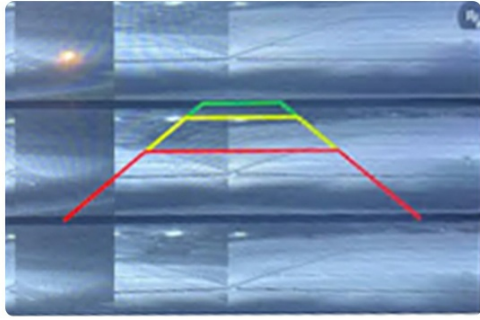
Compatibility Check

Ensure your vehicle is a Toyota Tacoma (3rd Generation) manufactured between 2016 and 2021.

General Installation Steps

1. Carefully remove the existing factory head unit and surrounding trim. You may need to transfer trim clips and air vents from the original unit to the new Junsun unit.
2. Connect the appropriate power harness to the vehicle's wiring. The unit comes with multiple harnesses; ensure you use the one that fits your vehicle's connectors.
3. Connect the GPS module, USB cables, RCA cables, and reversing line as needed. Refer to the wiring diagram for specific connections.
4. Mount the new Junsun Car Radio Stereo into the dashboard opening.
5. Reconnect the vehicle's battery and test the unit's functionality before fully reassembling the dashboard.

Wiring Diagram



Note:

Backup camera shows up as 6 different cameras on the screen, it is not the quality problem. Please select the format of the backup camera, it will be ok.

Method:

please go into the Settings->Car infotainment->About device->setting(code:8888)->backcar setup->camtype/camformat
(please select the format accord to your backup camera)

This diagram illustrates the various connection points on the back of the head unit and the corresponding cables.

Steering Wheel Control Setup

After installation, you may need to configure the steering wheel controls through the unit's settings menu. This typically involves mapping the buttons on your steering wheel to specific functions on the head unit.

Steering Wheel Control

You can adjusting the volume with the steering wheel control. Quickly switch songs and channels with your SWC Function, keep your attention and eyes on the road.



The unit's interface for configuring steering wheel controls.

OPERATING INSTRUCTIONS

System Navigation

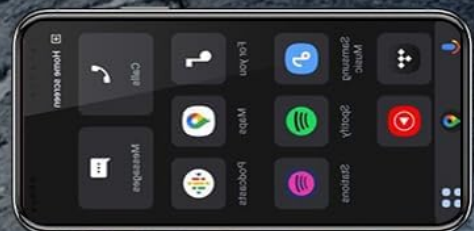
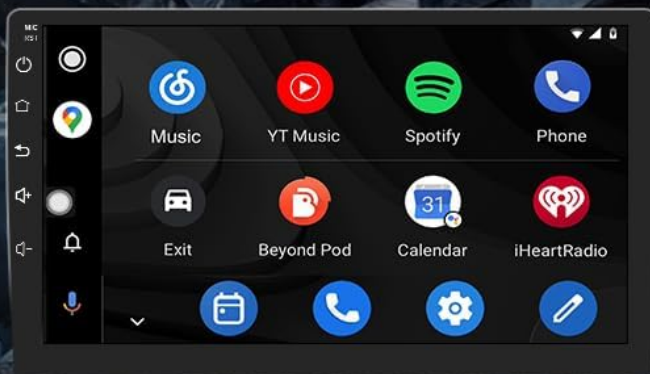
The unit operates on Android 13. Navigate through menus and applications using the touchscreen interface. Swipe, tap, and pinch gestures are supported.

CarPlay & Android Auto

To use CarPlay or Android Auto, connect your smartphone via a USB cable or wirelessly through Bluetooth and Wi-Fi. Follow the on-screen prompts to establish the connection. Once connected, your phone's compatible apps will appear on the unit's display.

Built in Carplay Android Auto

You can choose wired connection or wireless connection to Carplay or Android Auto. By connecting your iPhone or Android phones, you can access mobile phone address book, notification, message, map navigation, music and so on.



Example of CarPlay and Android Auto interfaces.

GPS Navigation

The unit comes with pre-installed offline North American maps. For online navigation and real-time traffic updates, connect the unit to a Wi-Fi hotspot (e.g., from your smartphone). Open the navigation application and enter your destination.

GPS Navigation

Built in offline North American map. Also support online map, when you connect WiFi you can use the GPS navigation anywhere. By WiFi you can download or delete apps in APP Store, as the same as phone.



GPS navigation display with route information.

Bluetooth Functions

Pair your phone via Bluetooth to make hands-free calls and stream audio. Go to the Bluetooth settings on the unit, enable Bluetooth, and search for your phone. Select your phone from the list and confirm the pairing code.

Bluetooth Function

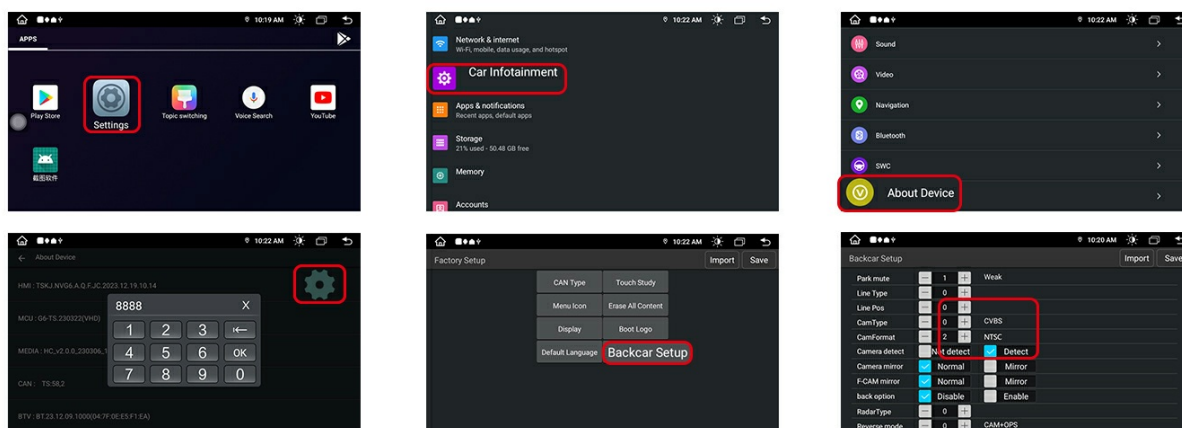


Bluetooth interface for phone calls and music playback.

FM/AM Radio

Access the FM/AM radio application. Use the touchscreen to scan for stations, save presets, and adjust settings. The digital display shows the current frequency.

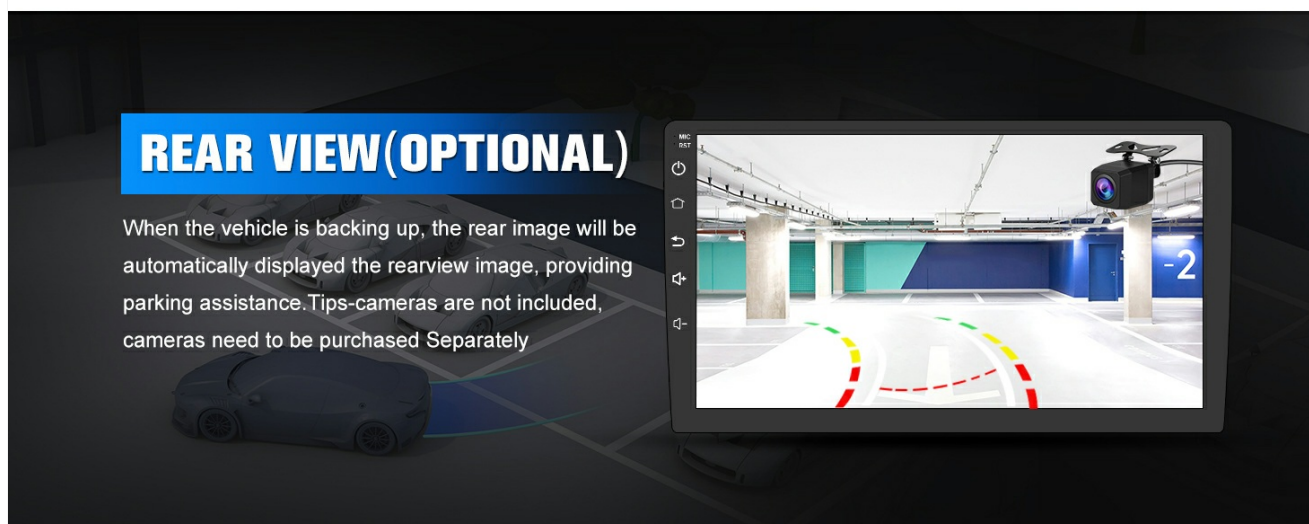
Select the Format Of The Backup Camera



FM radio interface.

Digital Sound Processor (DSP)

Navigate to the DSP settings to customize your audio experience. Adjust equalizer presets (Flat, Pop, Rock, Jazz, Classic, User), balance, delay, and filter settings to match your preferences.



DSP settings for audio customization.

MAINTENANCE

To ensure the longevity and optimal performance of your Junsun Car Radio Stereo, follow these maintenance guidelines:

- **Screen Cleaning:** Use a soft, lint-free cloth to gently wipe the touchscreen. For stubborn smudges, slightly dampen the cloth with water or a screen-safe cleaner. Avoid harsh chemicals or abrasive materials.
- **Software Updates:** Periodically check for system software updates through the unit's settings menu (if available). Keeping the software updated can improve performance and add new features.
- **Environmental Conditions:** Avoid exposing the unit to extreme temperatures, direct sunlight for prolonged periods, or excessive moisture.

TROUBLESHOOTING

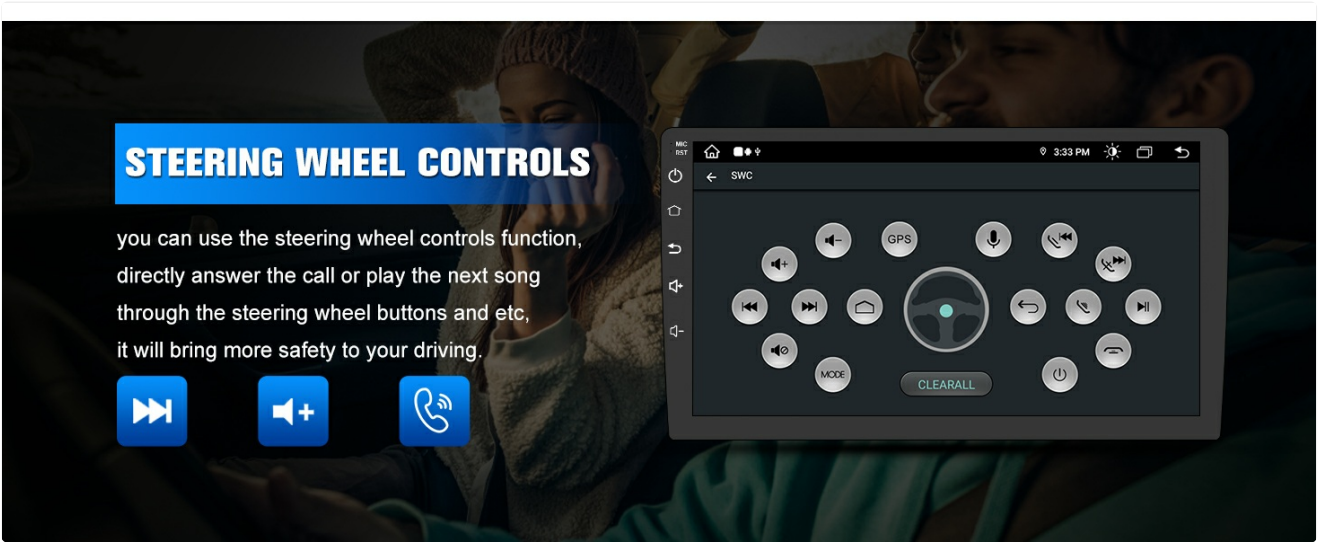
This section addresses common issues you might encounter with your Junsun Car Radio Stereo.

Backup Camera Displays Multiple Images or Poor Quality

If your backup camera displays multiple images, is blurry, or shows in black and white, it is likely a setting configuration issue, not a defect.

Solution: Adjust the backup camera format in the system settings.

1. Go to **Settings**.
2. Select **Car Infotainment**.
3. Tap **About Device**.
4. Enter the settings code: **8888**.
5. Select **Backcar Setup**.
6. Adjust **camtype/camformat** to match your specific backup camera's format. You may need to try different options (e.g., CVBS, NTSC, PAL) until the image displays correctly.



Steps to configure backup camera settings.

USB Port Not Functioning

If the USB port is not working, ensure all wiring connections are secure and correctly installed. Verify that the factory USB cable is properly connected to the head unit using the supplied adapter.

Bluetooth Volume Issues

If Bluetooth audio volume is too low or inconsistent with other audio sources, check the individual volume settings within the Bluetooth application and the main system volume. Some devices may require volume adjustments directly on the paired phone.

Steering Wheel Controls Not Working

Ensure the Can Bus decoder is correctly connected and configured. Access the steering wheel control settings in the unit's menu to manually program or re-learn the button functions.

SPECIFICATIONS

Operating System	Android 13
RAM	4GB
ROM	64GB
Screen Size	10 Inches

Screen Resolution	1280*720
Connectivity	Bluetooth 5.0, Wi-Fi, USB
Special Features	Wireless CarPlay, Android Auto, GPS Navigation, FM/AM Radio, DSP
Human Interface Input	Touchscreen
Color	Black
Item Weight	2 pounds
Package Dimensions	23.1 x 9.5 x 6 inches

WARRANTY INFORMATION

Specific warranty details for the Junsun Car Radio Stereo are provided by the seller at the time of purchase. Please refer to your purchase documentation or contact the seller directly for information regarding warranty coverage and terms. Protection plans may also be available for extended coverage.

SUPPORT

For technical assistance or any questions regarding your Junsun Car Radio Stereo, please contact our customer support team.

Email Support: Junsun-US@outlook.com

Availability: 24 hours technical support.



Our support team is available to assist you.