

## Ehaho MT4300

# Ehaho 34-Inch UTV Sound Bar User Manual

Model: MT4300 | Brand: Ehaho

## 1. INTRODUCTION

Thank you for choosing the Ehaho 34-Inch UTV Sound Bar. This manual provides essential information for the proper installation, operation, and maintenance of your sound bar. Please read this manual thoroughly before use to ensure optimal performance and safety. This sound bar is designed for outdoor vehicles such as UTVs, ATVs, Golf Carts, and Boats, offering robust audio and dynamic RGB lighting.

## 2. WHAT'S IN THE BOX

Carefully unpack the contents and ensure all items are present. If any items are missing or damaged, please contact customer support.

- Ehaho 34-Inch UTV Sound Bar
- Mounting Kits (Brackets, Bolts, Washers, Allen Wrench)
- Remote Control
- User Guide
- Spare Extendable Cable
- Connectors
- Cigarette Lighter Receptacle
- Fuse

# IP66 RATED WATERPROOF

Rugged and ready for adventure



Figure 2.1: Included Components. The image displays the sound bar, user guide, mounting brackets, mounting kit, extendable cable, fuse, connectors, cigarette lighter receptacle, and two remote controls.

## 3. PRODUCT FEATURES

- **Powerful Audio System:** Equipped with 2x 1" Tweeters, 2x 4" Subwoofers, 2x 3" Mid/Woofers, and 2x 4" Low-Frequency Radiators, powered by a built-in Class D amplifier delivering up to 600 watts.
- **RGB Lighting:** Multi-color LED lights encircle the speaker units and sides, offering steady or blinking modes, with music synchronization for dynamic light patterns.
- **Durable & Waterproof:** IP66 rated for water and dust resistance, featuring a heavy-duty housing suitable for outdoor environments.
- **Multiple Input Options:** Bluetooth V5.0 for wireless audio, USB Audio play, and 3.5mm Aux Input for various devices.
- **Control Methods:** Includes a control panel on the unit and a wireless remote control for convenient operation.
- **Universal Mounting:** Designed to fit off-road vehicles with 1" to 2" roll cages, including UTVs, ATVs, Golf Carts, and Boats.



# RGB BEAT-SYNC LIGHT

Elevating your ride with rock passion and energy

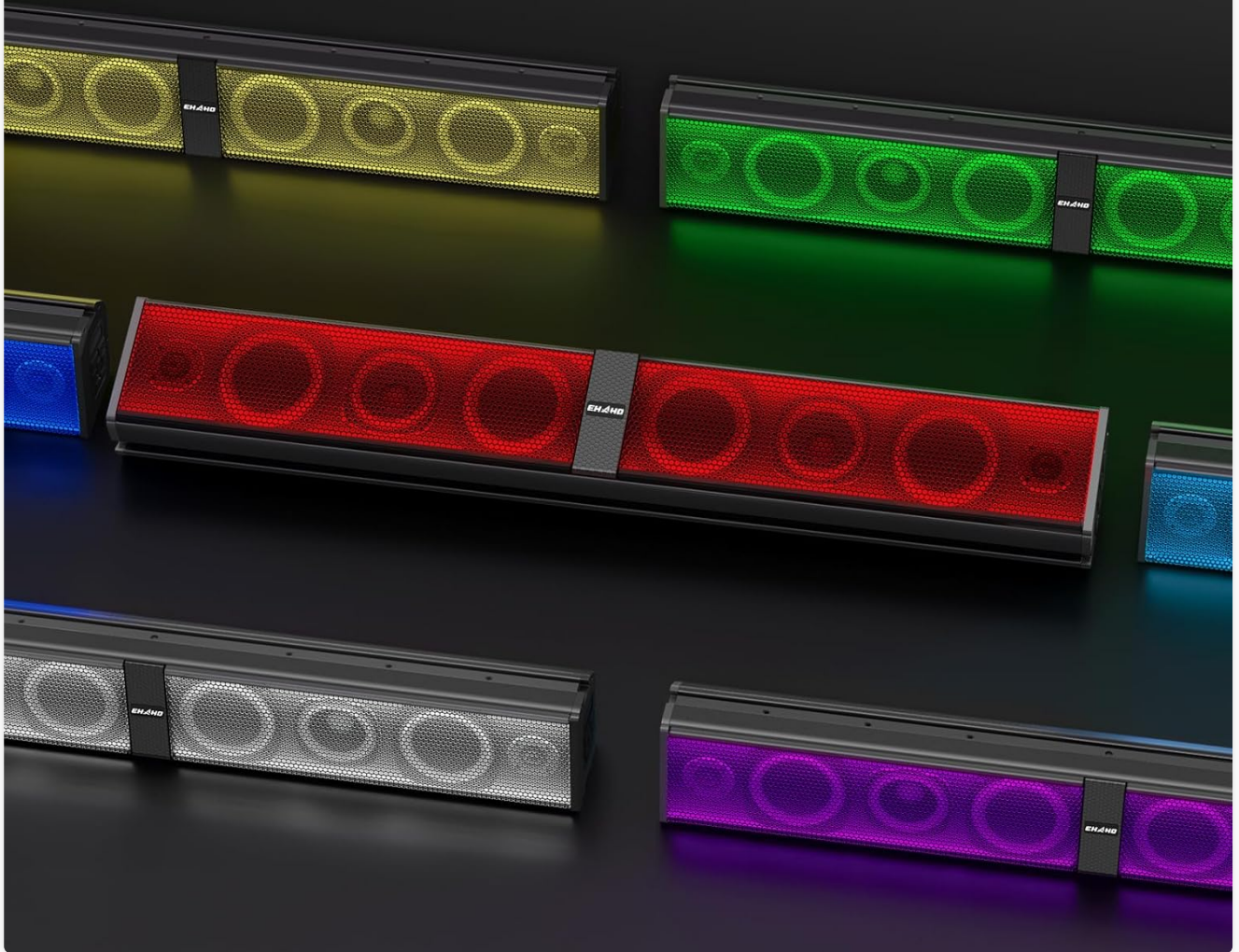


Figure 3.1: Ehaho UTV Sound Bar with RGB Lighting. The sound bar is shown mounted on a vehicle's roll bar, illuminated with blue LED lights, with a scenic background.

# **600W PEAK POWER**

**BUILT-IN AMPLIFIER**

**Crisp Highs, Strong Midrange, Punchy Bass**

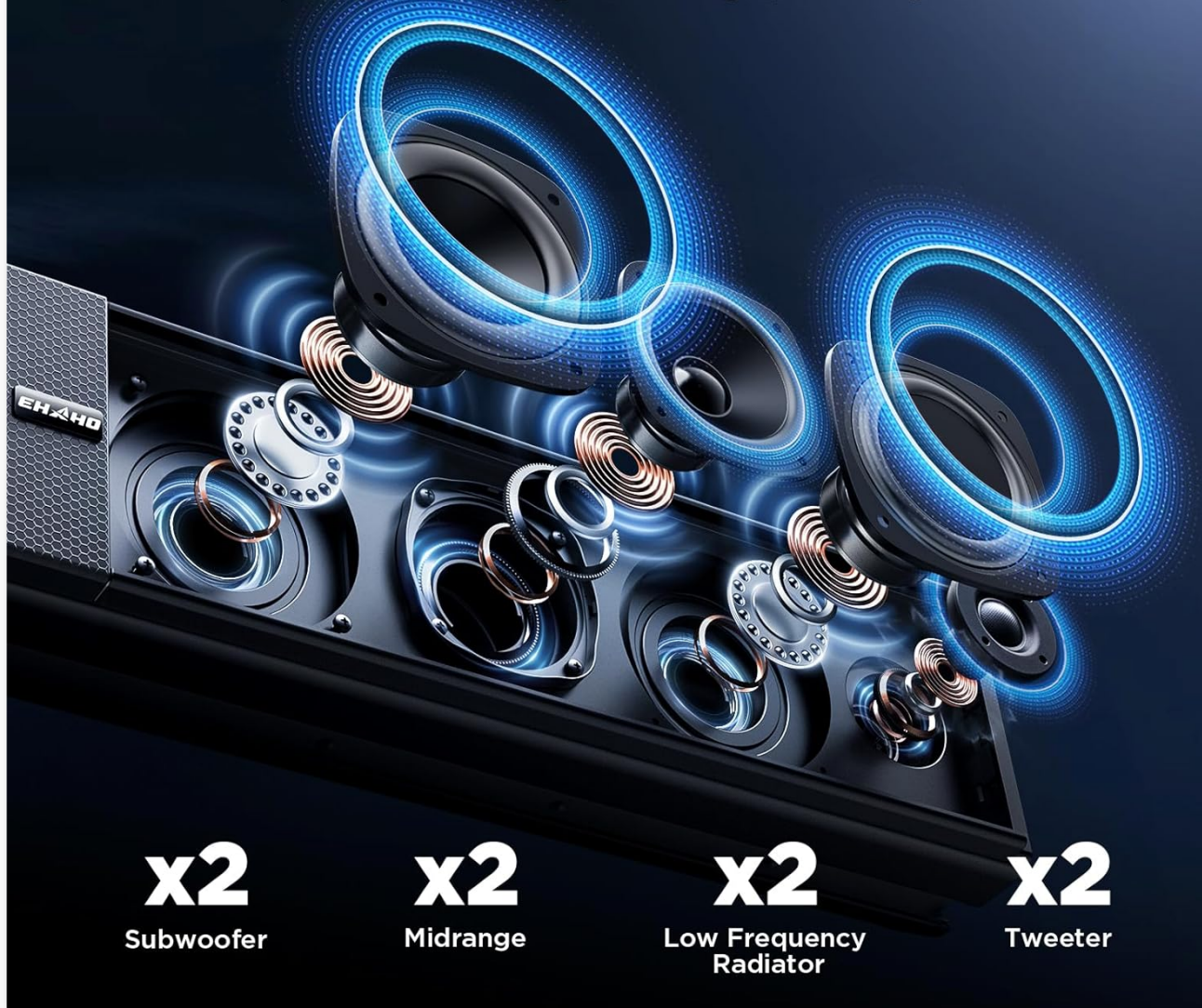


Figure 3.2: Internal Speaker Configuration. This image illustrates the arrangement of the sound bar's 8 speakers: 2 subwoofers, 2 mid-range speakers, 2 low-frequency radiators, and 2 tweeters, emphasizing its 600W peak power.



# Easy Mounting with Universal Brackets

FIT FOR ANY VEHICLE WITH 1"~ 2" ROLL BAR  
UTV, ATV, Golf Cart, Boat



Figure 3.3: RGB Beat-Sync Lighting. The sound bar is displayed with different colored LED lights, showcasing its ability to sync with music and elevate the riding experience.

## 4. SAFETY INFORMATION

Please observe the following safety precautions to prevent injury or damage to the product:

- Ensure the sound bar is securely mounted to prevent detachment during vehicle operation.
- Do not operate the sound bar at excessively high volumes for prolonged periods, as this may cause hearing damage.
- Verify all electrical connections are correct and secure before powering on the device to avoid short circuits or electrical hazards.
- The product is IP66 waterproof; however, avoid submerging it in water or exposing it to high-pressure water jets.
- Keep the remote control and small components out of reach of children.
- If you notice any smoke, unusual odors, or sounds, immediately disconnect power and contact customer support.



## 5. SETUP AND INSTALLATION

### 5.1 Mounting the Sound Bar

The Ehaho UTV Sound Bar comes with universal brackets designed for easy installation on roll cages ranging from 1" to 2" in diameter.

1. Select a suitable location on your vehicle's roll cage that does not obstruct your view or interfere with vehicle controls.
2. Attach the mounting brackets to the sound bar using the provided bolts. Do not overtighten.
3. Position the sound bar with attached brackets onto the roll cage. Use the appropriate rubber inserts if your roll cage diameter is smaller than the bracket's maximum opening.
4. Secure the brackets around the roll cage using the remaining bolts and nuts. Ensure the sound bar is firmly attached and does not move.



Figure 5.1: Sound Bar Dimensions and Mounting. This image provides a detailed view of the sound bar's 34-inch length and the mounting bracket components, illustrating how it fits roll bars from 1 to 2 inches.



## 3 WAYS TO CONNECT



BT 5.0



USB PORT



3.5MM AUX INPUT



Figure 5.2: Easy Mounting with Universal Brackets. This image shows the sound bar installed on a UTV, ATV, golf cart, and boat, highlighting its adaptability to various outdoor vehicles with 1"-2" roll bars.

### 5.2 Power Connection

The sound bar operates on a 12-volt power supply. Use the provided cigarette lighter receptacle and fuse for connection.

1. Connect the sound bar's power cable to the provided cigarette lighter receptacle.
2. Insert the fuse into the fuse holder on the power cable.
3. Plug the cigarette lighter receptacle into your vehicle's 12V power outlet.
4. Ensure the connection is secure to prevent power interruptions.

## 6. OPERATING INSTRUCTIONS

### 6.1 Power On/Off

Press the power button on the sound bar's control panel or the remote control to turn the unit on or off.

## 6.2 Input Modes

The sound bar supports Bluetooth, USB, and Aux inputs. Use the 'MODE' button on the control panel or remote to switch between input sources.



Figure 6.1: Multiple Connection Ways. This image shows the three primary methods to connect audio to the sound bar: Bluetooth 5.0, USB, and 3.5mm Aux input.

### 6.2.1 Bluetooth Pairing

1. Ensure the sound bar is powered on and in Bluetooth mode (indicated by a flashing Bluetooth icon or specific LED pattern).
2. On your mobile device, enable Bluetooth and search for available devices.
3. Select "Ehaho Sound Bar" (or similar name) from the list to pair.
4. Once paired, the Bluetooth indicator will become solid, and you can play audio wirelessly.

### 6.2.2 USB Audio Playback

Insert a USB drive containing audio files into the USB port on the sound bar. The unit will automatically switch to USB mode and begin playback.



### 6.2.3 3.5mm Aux Input

Connect your audio device (e.g., MP3 player, smartphone) to the 3.5mm Aux input port using a standard audio cable. Switch the sound bar to Aux mode.

### 6.3 RGB Lighting Control

The RGB lighting can be controlled via the sound bar's control panel or the remote control. You can select various colors, modes (steady, blinking), and activate music synchronization.

### 6.4 Remote Control

The wireless remote control allows you to manage power, volume, input modes, track selection, and RGB lighting settings from a distance of up to 33 feet (10 meters).

## 7. MAINTENANCE

- **Cleaning:** Use a soft, damp cloth to clean the exterior of the sound bar. Avoid using harsh chemicals or abrasive cleaners.
- **Storage:** When not in use for extended periods, store the sound bar in a cool, dry place, away from direct sunlight and extreme temperatures.
- **Connections:** Periodically check all electrical connections for corrosion or looseness and tighten as necessary.

## 8. TROUBLESHOOTING

Problem	Possible Cause	Solution
No power	Loose power connection, blown fuse, vehicle's 12V outlet not working.	Check power cable connections. Replace fuse if blown. Test vehicle's 12V outlet with another device.
No sound	Volume too low, incorrect input mode, device not paired (Bluetooth), audio cable faulty.	Increase volume. Ensure correct input mode is selected. Re-pair Bluetooth device. Test with a different audio cable.
Bluetooth connection unstable	Device too far, interference, low battery on device.	Move device closer to the sound bar (within 33 feet). Avoid obstacles. Charge your device.
RGB lights not working	Lighting feature turned off, faulty connection.	Ensure RGB lights are enabled via control panel or remote. Check internal connections if accessible (consult support).
Loud startup sound	This is a factory default setting and cannot be adjusted by the user.	No user-adjustable solution. Be aware of the loud announcement when powering on.

## 9. SPECIFICATIONS

Feature	Specification
Model Name	MT4300
Speaker Type	Soundbar

Feature	Specification
Input Voltage	12 Volts
Speaker Configuration	2x 1" Tweeter, 2x 4" Subwoofer, 2x 3" Mid/Woofer, 2x 4" Low-Frequency Radiator
Maximum Output Power	600 Watts
Frequency Response	22 KHz
Connectivity Technology	Bluetooth V5.0
Bluetooth Range	33 Feet (10 Meters)
Control Method	Remote, On-unit controls
Special Features	RGB Lighting, IP66 Weatherproof, USB Audio Play, 3.5mm Aux Input
Product Dimensions	3.94"D x 34"W x 5"H
Item Weight	18.61 pounds
Mounting Type	Bracket Mounting (1" ~ 2" roll cage compatible)
Power Source	Battery Powered (Vehicle 12V)
Included Batteries	1 CR2032 (for remote control)

## 10. WARRANTY AND SUPPORT

### 10.1 Warranty Information







The Ehaho 34-Inch UTV Sound Bar (Model MT4300) comes with a **1-Year Warranty** from the date of purchase. This warranty covers manufacturing defects and workmanship under normal use. It does not cover damage caused by misuse, accident, unauthorized modification, or improper installation.

### 10.2 Customer Support

For technical assistance, warranty claims, or any questions regarding your Ehaho UTV Sound Bar, please contact our customer support team. Refer to the contact information provided on the product packaging or the official Ehaho website.

Please have your model number (MT4300) and proof of purchase ready when contacting support.



	<p><a href="#">Ehaho MT4100/MT4200 ATV/UTV Sound Bar User Guide</a></p> <p>Comprehensive user guide for the Ehaho MT4100 and MT4200 ATV/UTV Sound Bars, covering installation, Bluetooth operation, AUX input, illumination, remote control, and troubleshooting.</p>
	<p><a href="#">Ehaho L2800 RGB Double Projection Laser Lamp User Manual</a></p> <p>Comprehensive user manual for the Ehaho L2800 RGB Double Projection Laser Lamp, detailing its features, operation, safety precautions, and remote control functions for DJ and party lighting.</p>
	<p><a href="#">Ehaho L2600 RGB Laser Light User Manual</a></p> <p>Comprehensive user manual for the Ehaho L2600 3D Animation RGB Laser Light, covering installation, safety, operation, and DMX control.</p>
	<p><a href="#">Ehaho L2600 3D Animation RGB Laser Light User Manual</a></p> <p>Comprehensive user manual for the Ehaho L2600 3D Animation RGB Laser Light, covering general instructions, safety warnings, remote control, and detailed DMX control parameters for professional lighting setups.</p>
	<p><a href="#">Manuel d'Utilisateur Lumière DJ EHAHO LA500</a></p> <p>Ce manuel d'utilisation complet pour la lumière DJ EHAHO LA500 détaille l'installation, l'utilisation de l'application LightElf et du contrôle DMX, ainsi que les consignes de sécurité essentielles pour créer des spectacles lumineux dynamiques pour fêtes, bars et clubs.</p>
	<p><a href="#">Ehaho LED Whip Lights Installation and User Guide</a></p> <p>Comprehensive guide for installing and operating Ehaho LED RGB Whip Lights, including wiring diagrams, app control, and remote functions. Suitable for off-road vehicles.</p>